

1N5817W4N5819W

Rev.E Mar.-2019

5 é / Desp

RK Ô Â ... v 8 â ' k V ° SOD-123FL / xož

Schottky Barrier Rectifiers,SOD-123FL thin package.

¤ ª / Feats

z ô k ä | ä k ä v k 3 g 9 ' z k ~ ... ä k 9 z 9 k ä È " J ~ož —)í D }ož

Low power loss, high efficiency.High current capability,low forward voltage drop,High surge capability,
For use in low voltage, high frequency inverters.Halogen free product.

Đ ÷ / Apab

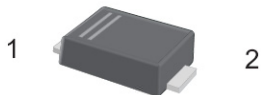
%² " (ož

General purpose.

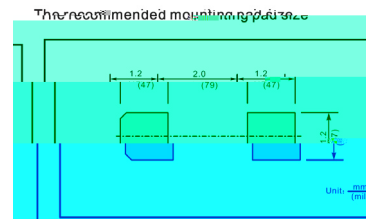
Ã W]Ô . / EigtCctu



• Ô - æ / Pg



PIN	DESCRIPTION
1	Cathode
2	Anode



, M V / Malg

• - ~ ª øž See Marking Instructions.

1N5817W/1N5819W

Rev.E Mar.-2019



DATA SHEET

@ f Parameter	... Z Symbol	f › Rating			% y Unit
		1N5817W	1N5818W	1N5819W	
Maximum Repetitive Peak Reverse Voltage	V_{RRM}	20	30	40	V
Maximum RMS voltage	V_{RMS}	14	21	28	V
Maximum DC Blocking Voltage	V_{DC}	20	30	40	V
Maximum Average Forward Rectified Current	I_{FAVA}	1.0			A
Peak Forward Surge Current, 8.3ms Single Half Sine-wave Superimposed On Rated Load (JEDEC method)	I_{FSM}	25			A

1N5817W4N5819W

Rev.E Mar.-2019

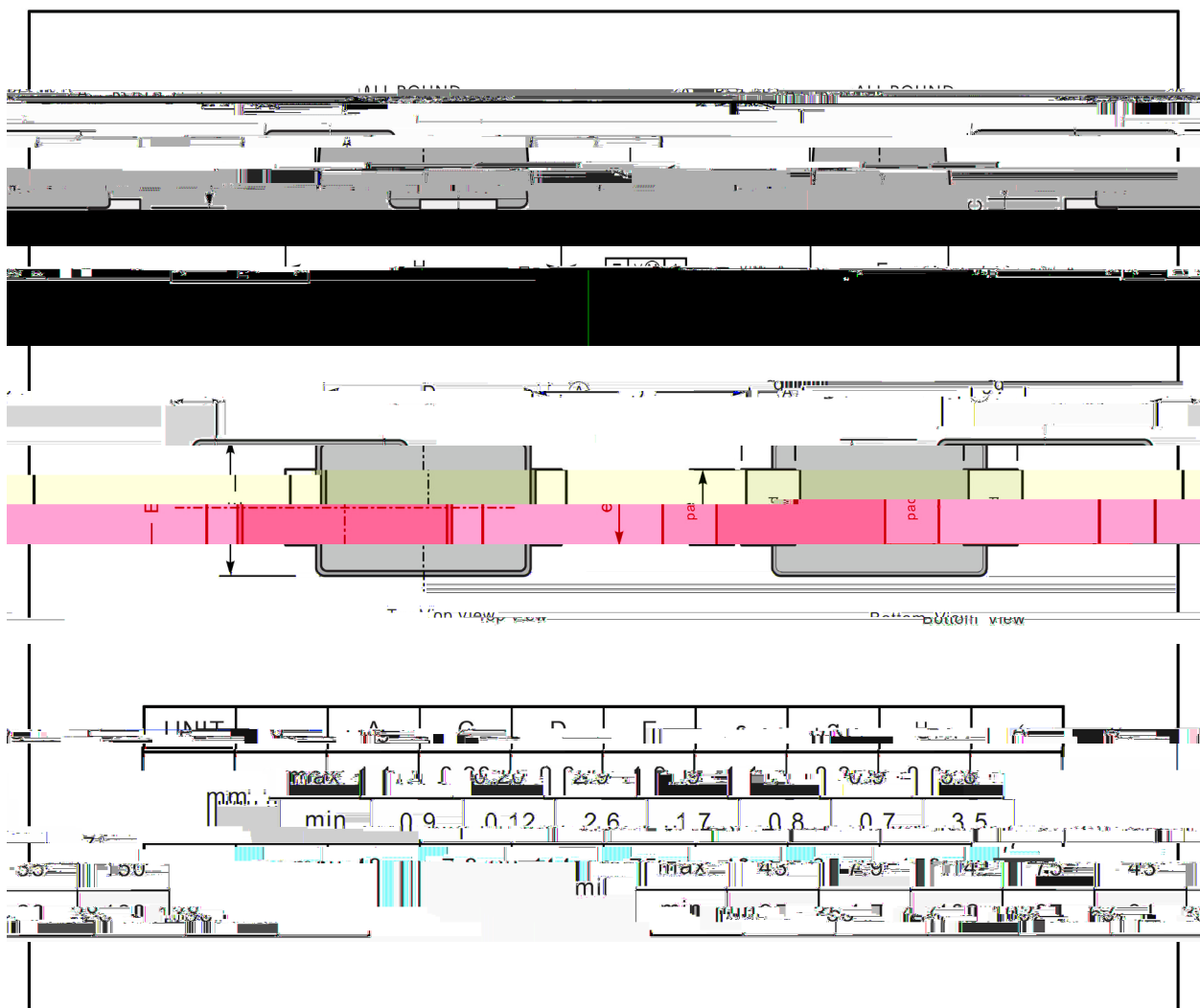


DATA SHEET

Ô ? d • Ž ¢

Ø □ =) ϕ / Packg Dim

SOD-123FL



1N5817W-1N5819W

Rev.E Mar.-2019

, My f / Marking

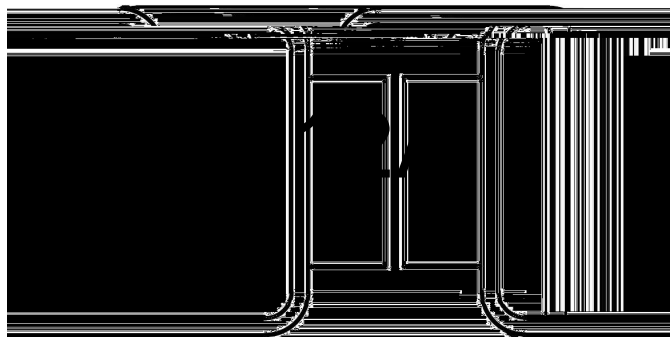
Marking

Typical Marking	Marking Code
1N5817W	12A
1N5818W	13A
1N5819W	14A

1N5817W4N5819W

Rev.E Mar.-2019

, My f / Mal



^aç y

' y ° Z W A

**** y ÿ D Z A Ç A k † v Ä W A k e µ ç Ä 4 Z W A

Note:

' y Product Type Code

**** y Lot No. Code k The 1st "*" means:YM Code k The last 3 "*" means:little Lot
No Code

