

**/ Descriptions**

KF \$) CD                      E GE                      Silicon NPN transistor in a TO-92LM Plastic Package.

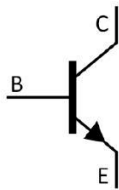
**/ Features**

#                      #  
High breakdown voltage, low output capacitance, high  $f_T$ .

**/ Applications**

#  
TV video output, high voltage switching and driver stage of audio amplifier applications.

**/ Equivalent Circuit**



**/ Pinning**



PIN1 Base                      PIN 2 Collector                      PIN 3 Emitter

**/  $h_{FE}$  Classifications & Marking**

$h_{FE}$ Classifications Symbol	O	Y
$h_{FE}$ Range	70 140	120 240

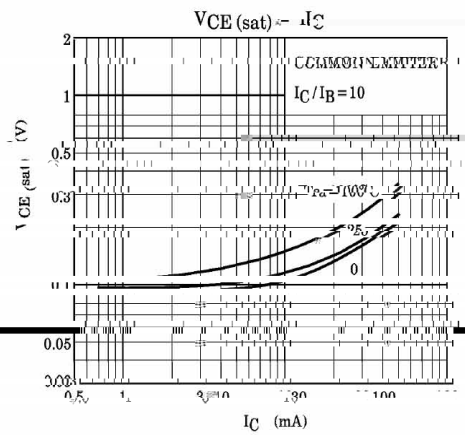
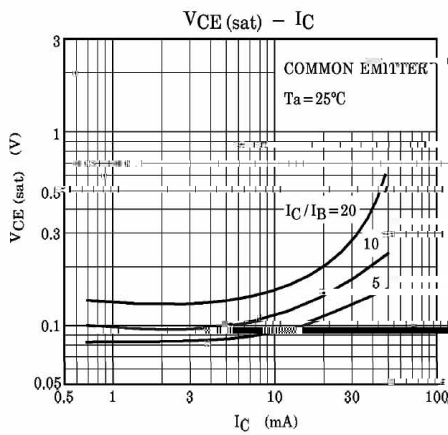
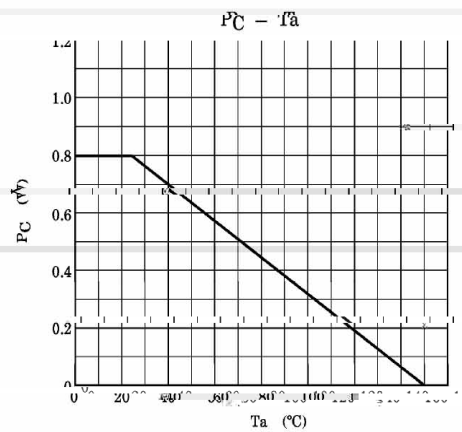
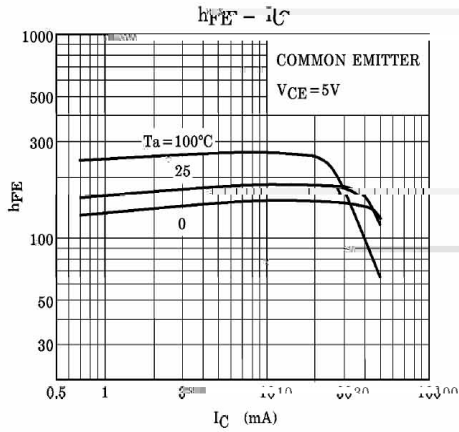
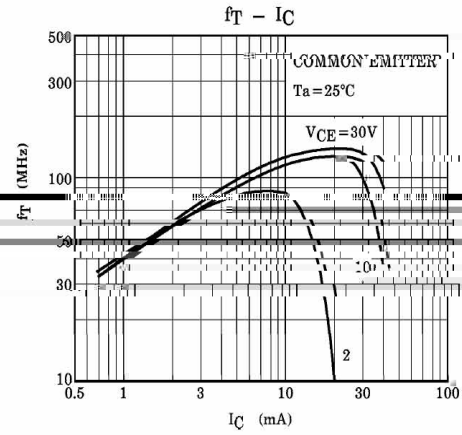
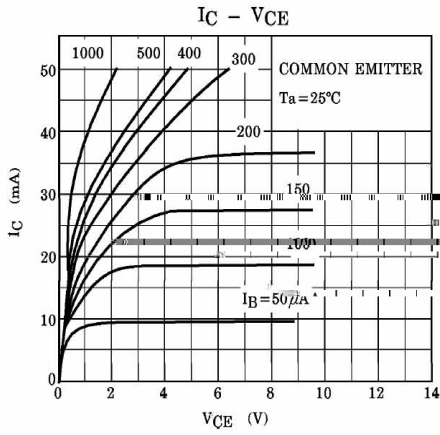
Parameter	Symbol	Rating	Unit
Collector to Base Voltage	$V_{CBO}$	200	V
Collector to Emitter Voltage	$V_{CEO}$	150	V
Emitter to Base Voltage	$V_{EBO}$	5.0	V
Collector Current (DC)	$I_C$	50	mA
Emitter Current	$I_E$	-50	mA
Collector Power Dissipation	$P_C$	800	mW
Junction Temperature	$T_j$	150	
Storage Temperature Range	$T_{stg}$	-55 150	

Parameter	Symbol	Test Conditions	Min	Typ	Max	Unit
Collector Cut-Off Current	$I_{CBO}$	$V_{CB}=200V$ $I_E=0$			0.1	$\mu A$
Emitter Cut-Off Current	$I_{EBO}$	$V_{EB}=5.0V$ $I_C=0$			0.1	$\mu A$

DC Current Gain

$h_{FE}$   
Typ A

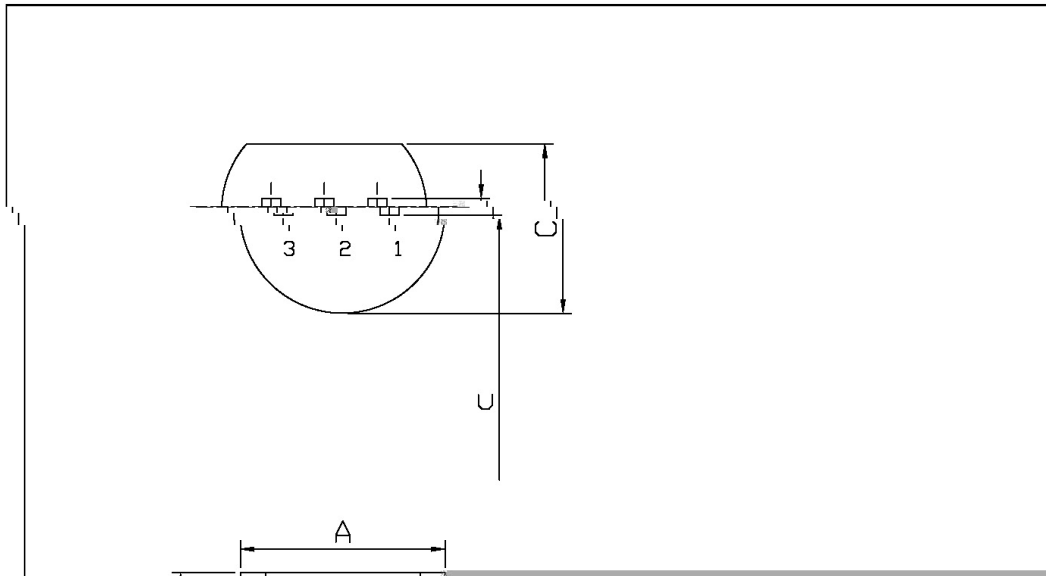
**/ Electrical Characteristic Curve**



/ Package Dimensions

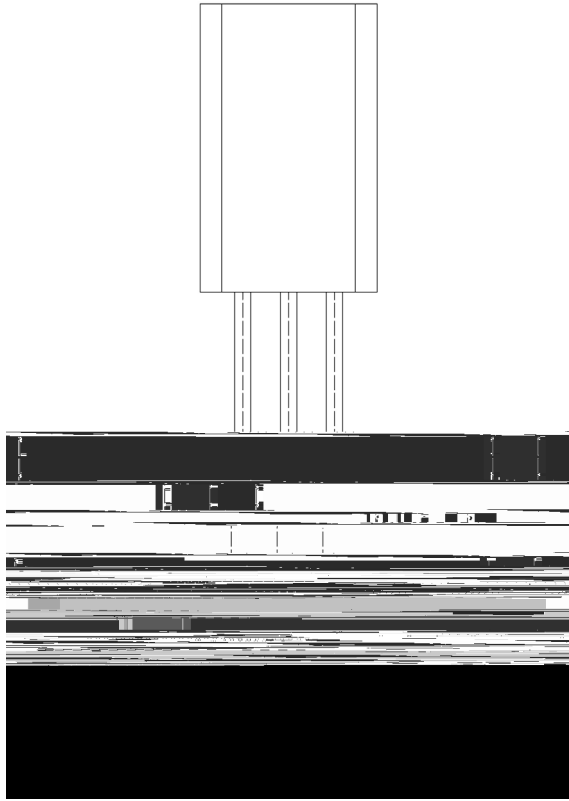
TO-92LM

Unit: mm



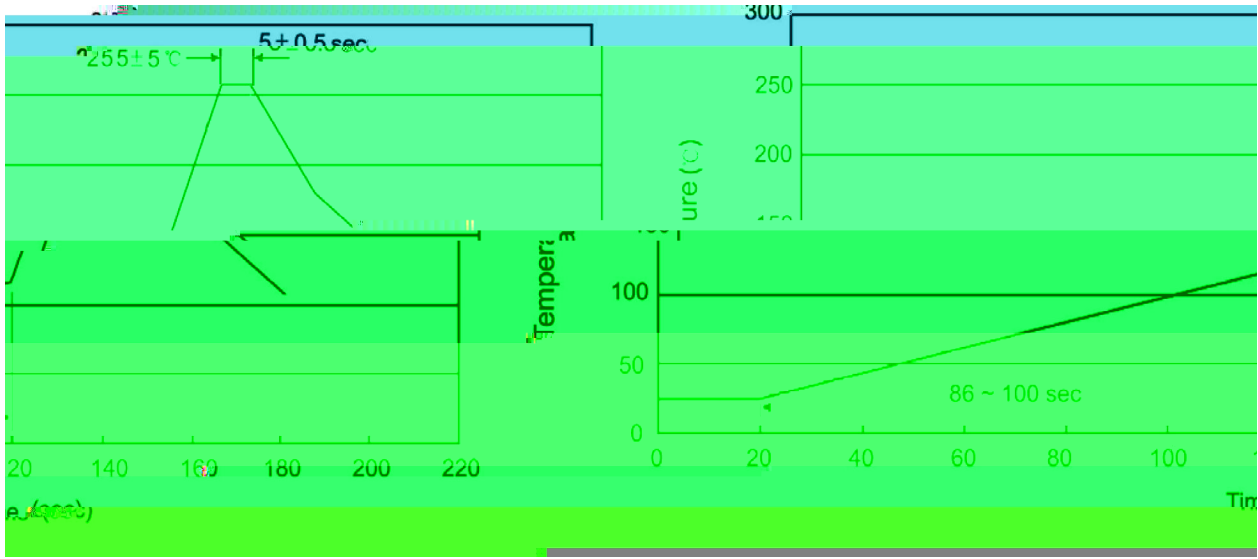
Symbol	Dimensions In Millimeters	
	Min	Max
A	4.47	5.1

/ Marking Instructions



91 1  
:)))0

( ) / Temperature Profile for Dip Soldering(Pb-Free)



Note:

- |   |        |     |            |          |   |
|---|--------|-----|------------|----------|---|
| 1 | 25     | 150 | 60         | 90sec;   | 1.Preheating:25~150 , Time:60~90sec.      |
| 2 | 255..5 |     | 5..0.5sec; |          | 2.Peak Temp.:255..5 , Duration:5..0.5sec. |
| 3 |        |     | 2          | 10 /sec. | 3. Cooling Speed: 2~10 /sec.              |

/ Resistance to Soldering Heat Test Conditions

270..5                      10..1 sec.                      Temp.:270±5                      Time:10±1 sec

/ Packaging SPEC.

/ BULK