

2SC2230(A)

/ Descriptions

KF S0) CD E GE

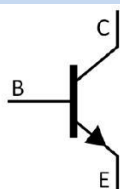
/ Features

M_{<F} #

/ Applications

#

/ Equivalent Circuit



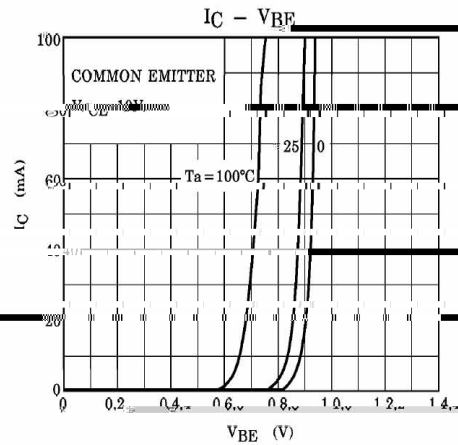
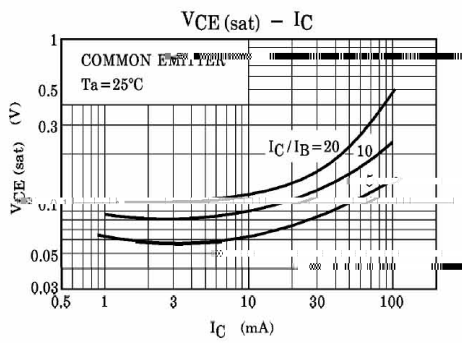
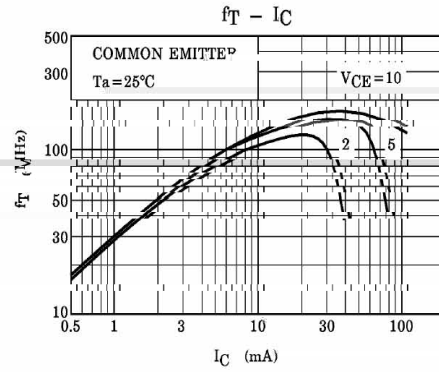
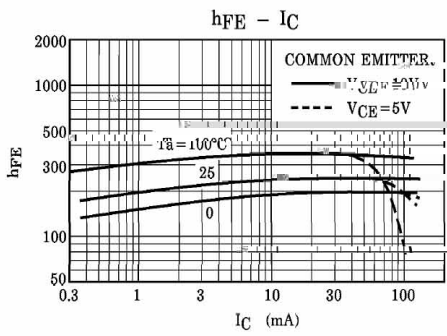
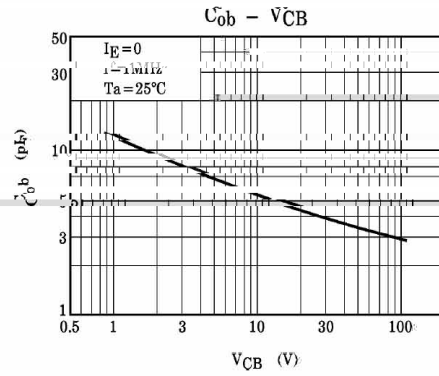
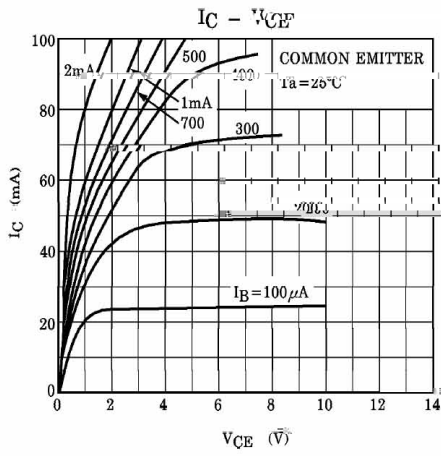
/ Pinning



/ h_{FE} Classifications & Marking

2SC2230(A)

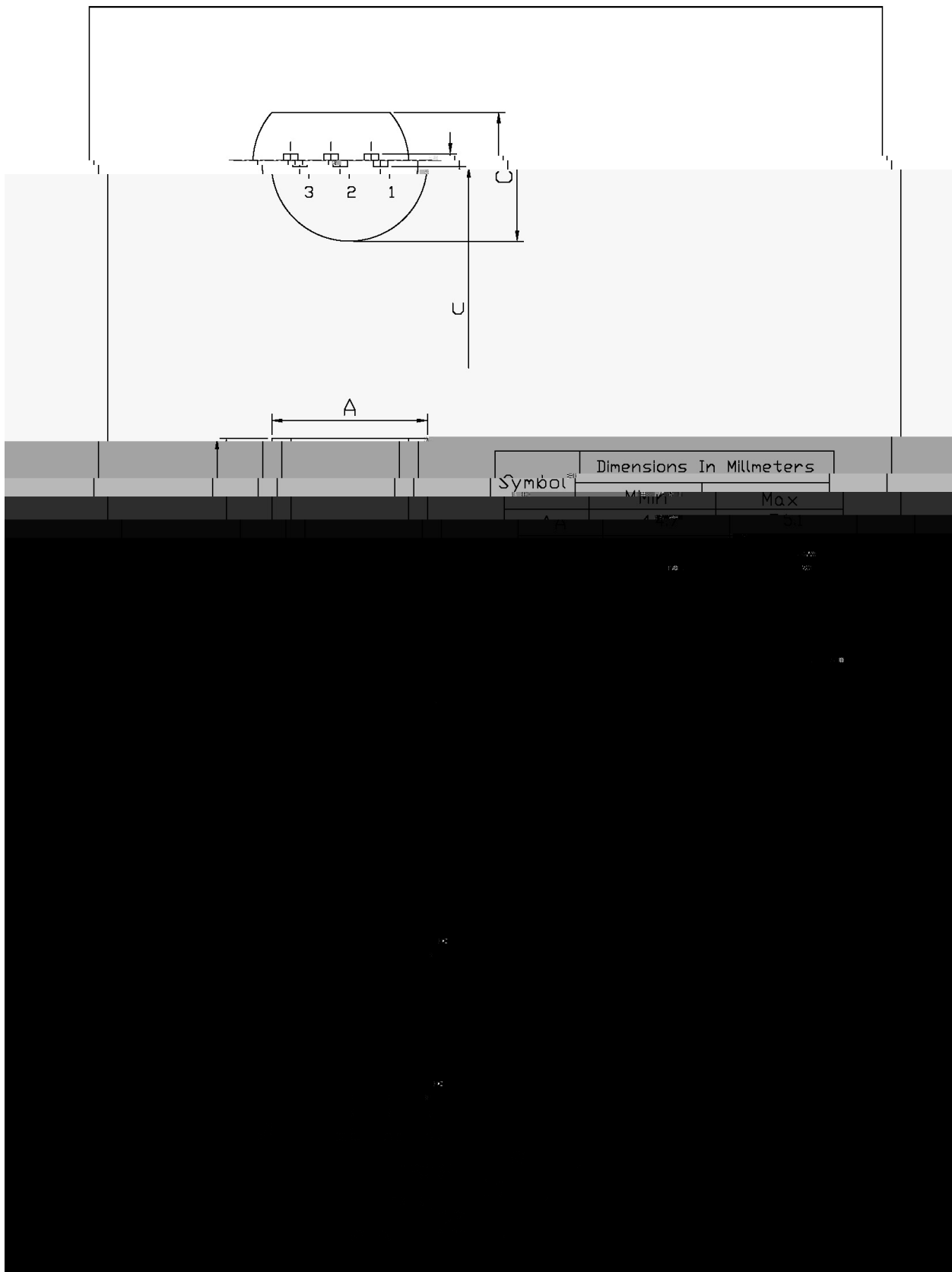
/ Electrical Characteristic Curve



/ Package Dimensions

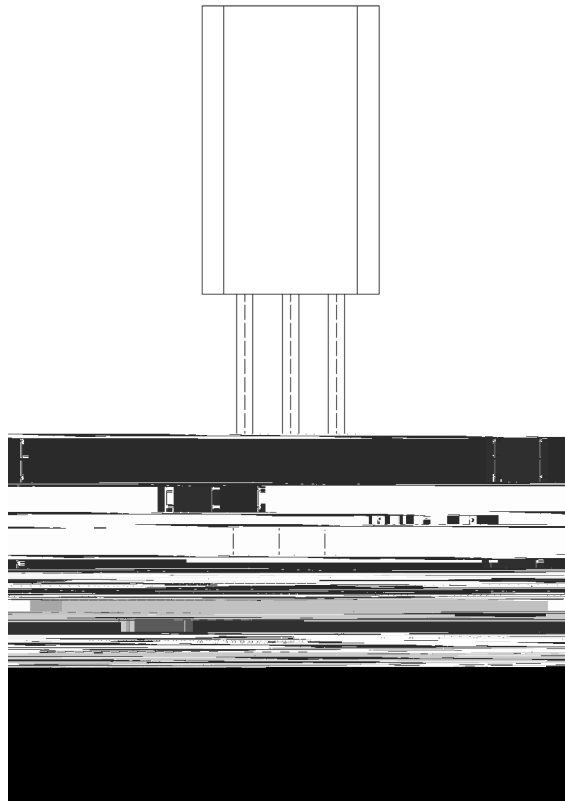
TO-92LM

Unit: mm



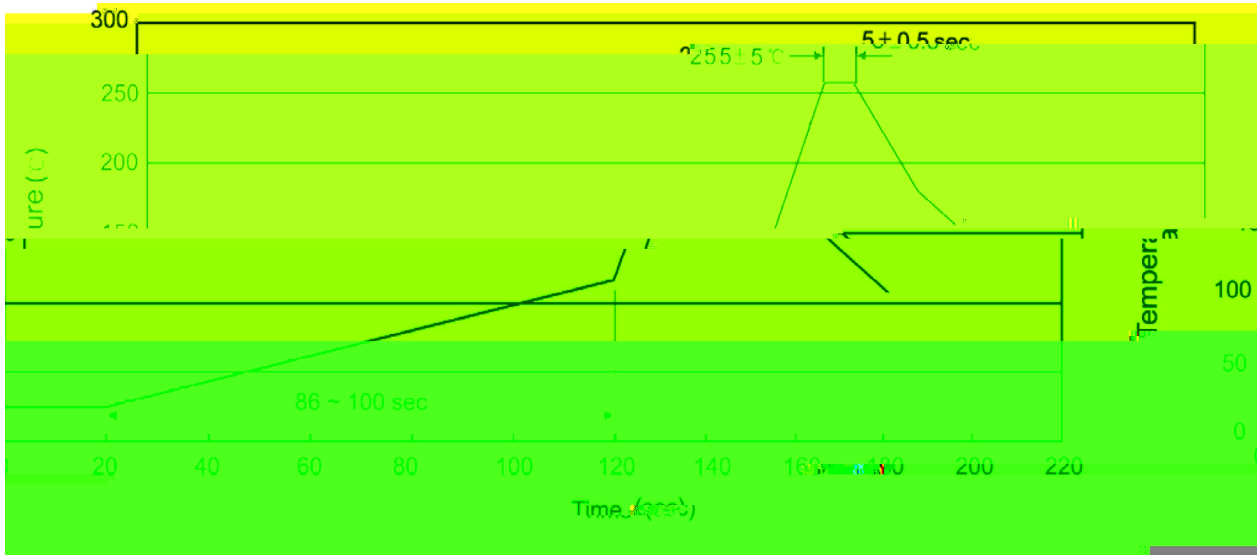
Symbol	Dimensions In Millimeters	
	Min	Max
A	4.70	5.00
U	1.40	1.60

/ Marking Instructions



9| 1
:)) *' 8
P1
!!!!

() / Temperature Profile for Dip Soldering(Pb-Free)



... ..

/ Resistance to Soldering Heat Test Conditions

... ..

/ Packaging SPEC.

封装形式	包装数量					包装尺寸 :		
	只袋	袋盒	只盒	盒箱	只箱	袋	盒	箱