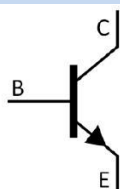


/ Descriptions

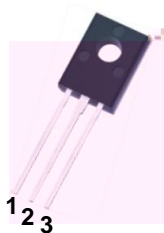
/ Features

/ Applications

/ Equivalent Circuit



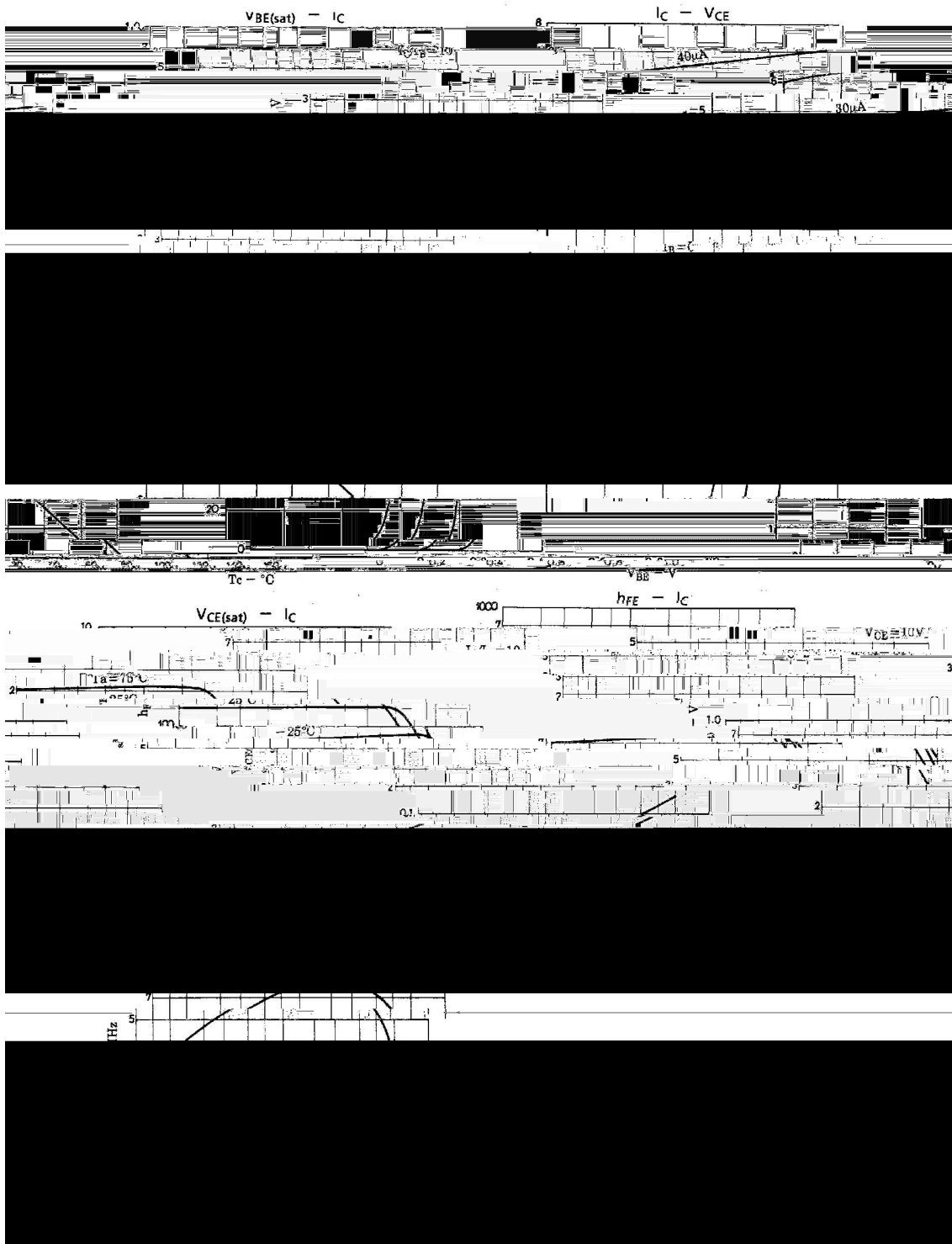
/ Pinning



/  $h_{FE}$  Classifications & Marking



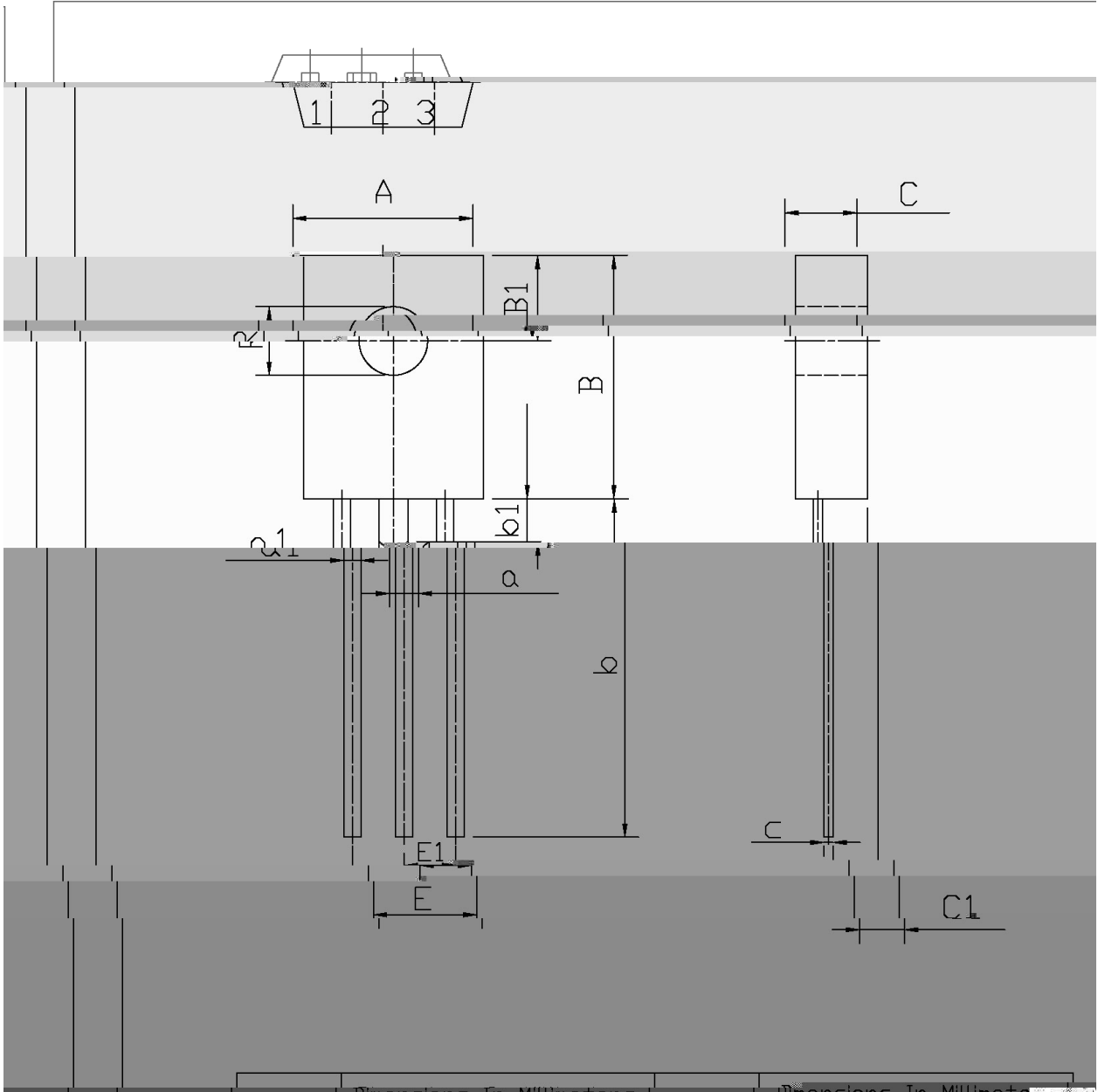

/ Electrical Characteristic Curve



/ Package Dimensions

TU-126F

单位: mm



Symbol	Min	Max	Symbol	Min
A	7.8	8.2	a1	0.66

/ Marking Instructions



**2SC3417**

**DATA SHEET**