

2SD468

/ Descriptions

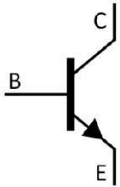
TO-92LM NPN

/ Features

2SB562

/ Applications

/ Equivalent Circuit



/ Pinning



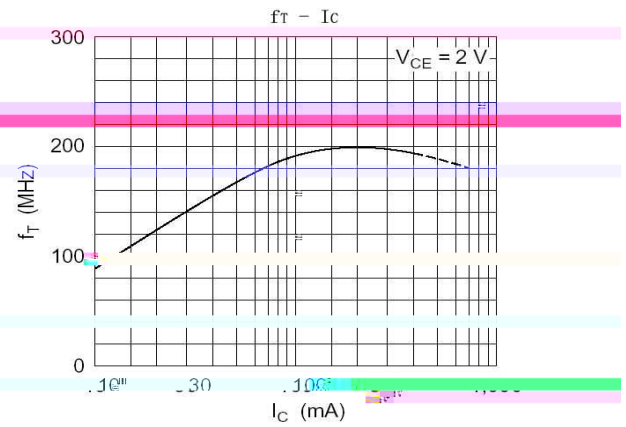
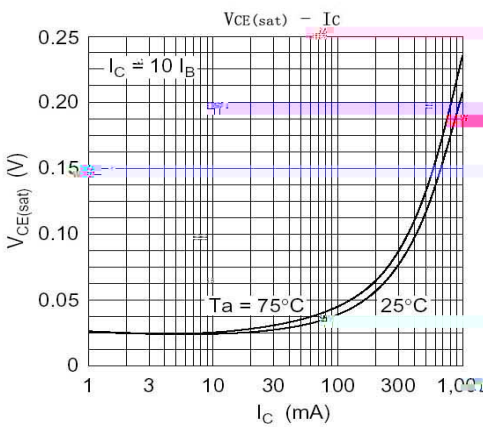
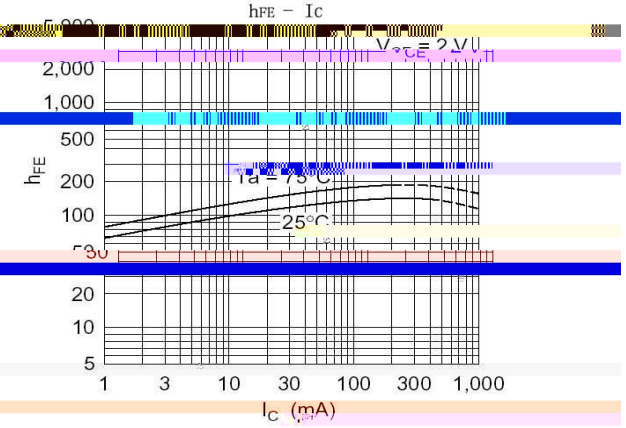
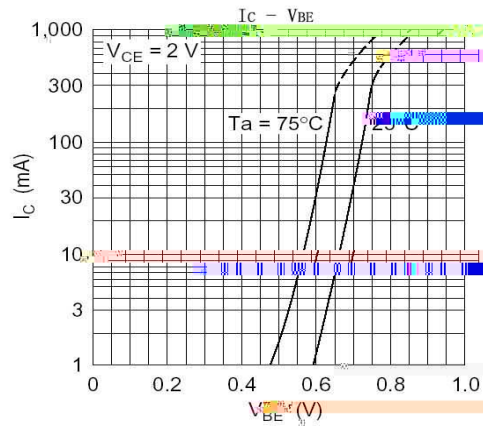
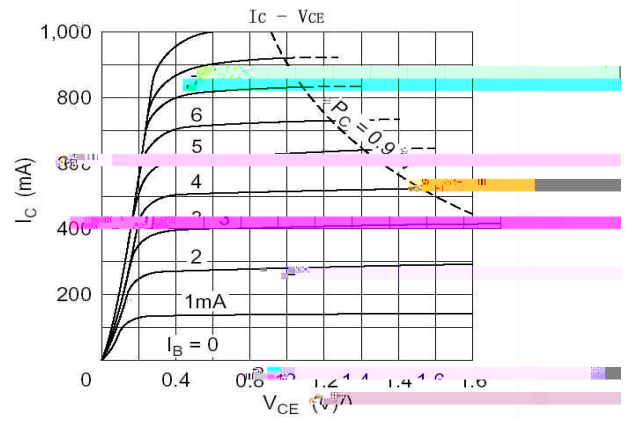
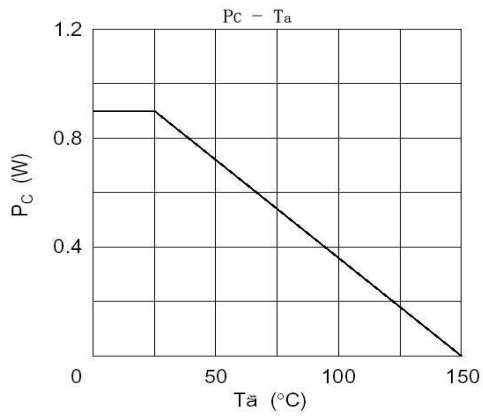
/ h_{FE} Classifications & Marking

/ Absolute Maximum Ratings(Ta=25)

/ Electrical Characteristics(Ta=25)

		μ				
		μ				
						μ

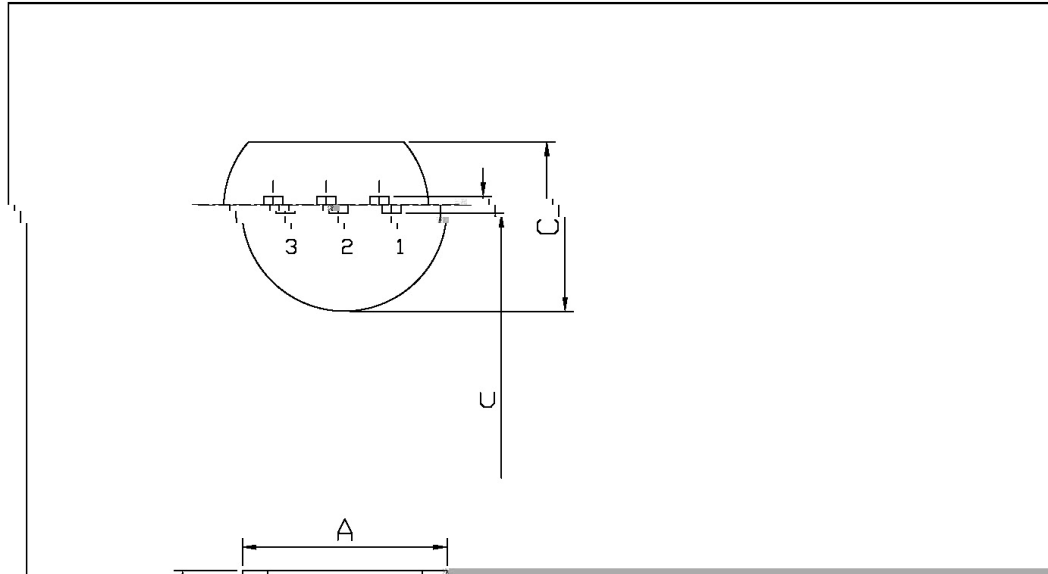
/ Electrical Characteristic Curve



/ Package Dimensions

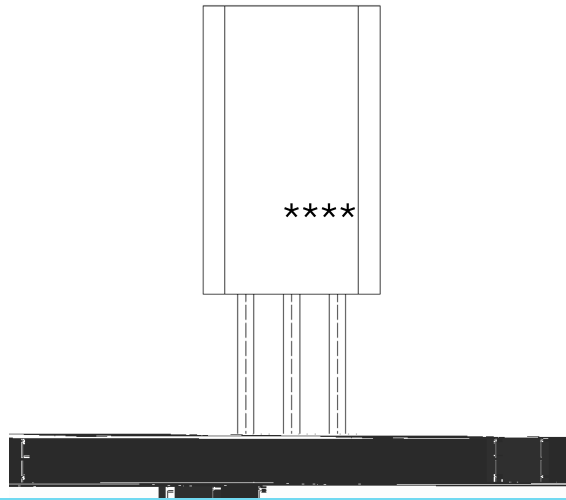
TO-92LM

Unit: mm



Symbol	Dimensions In Millimeters	
	Min	Max
A	4.47	5.1
C	1.27	1.52
E	0.51	0.76
E1	0.25	0.51
U	1.27	1.52

/ Marking Instructions

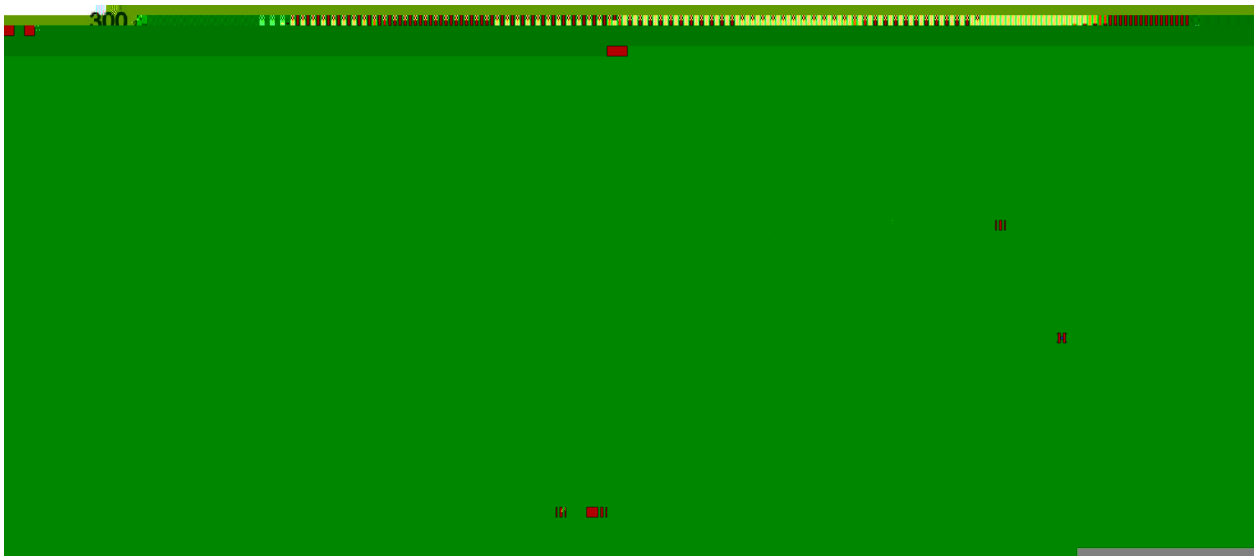


BR:

D468

B: h

() / Temperature Profile for Dip Soldering(Pb-Free)



±

±

±

±

/ Resistance to Soldering Heat Test Conditions

±

±