

/ Descriptions

TO-220 Voltage Regulator in a TO-220 Plastic Package.

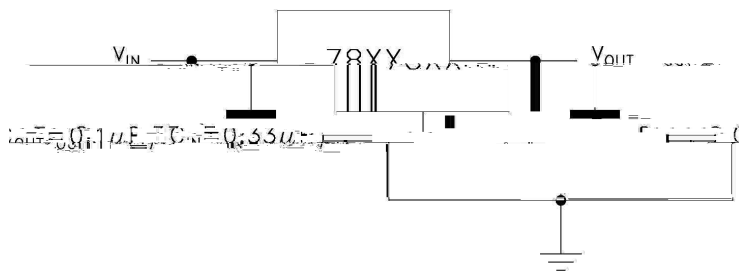
/ Features

1.5A,
3-Terminal regulators ,output current up to 1.5 A, internal thermal overload protection and short-circuit limiting.

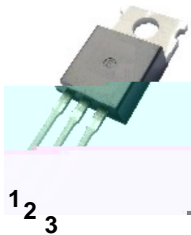
/ Applications

Voltage Regulator.

/ Equivalent Circuit or Application Circuit



/ Pinning



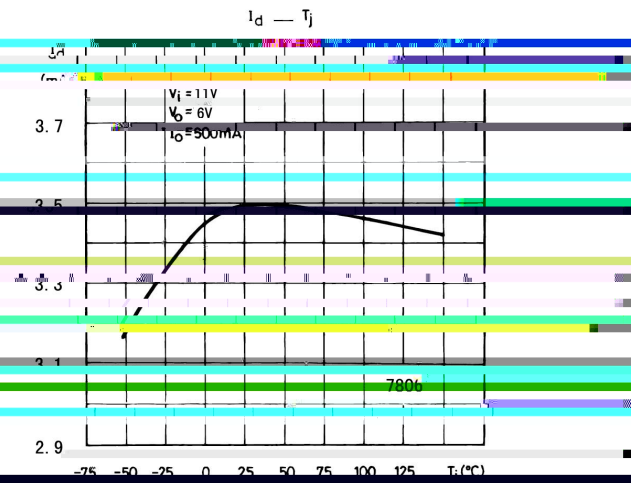
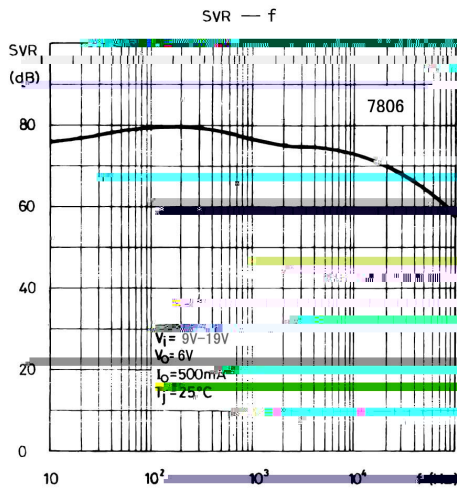
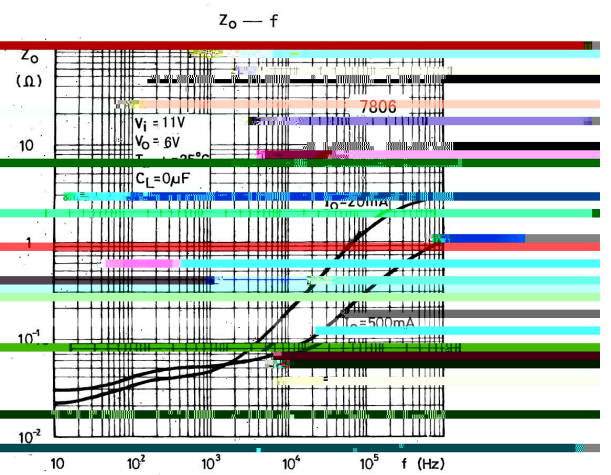
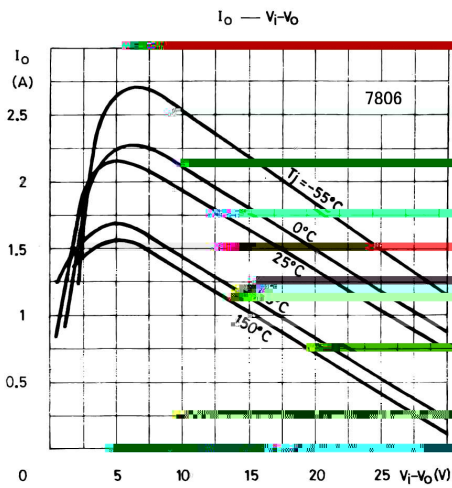
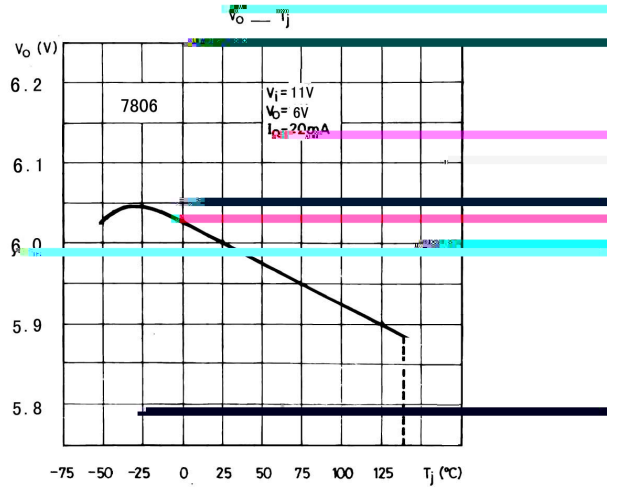
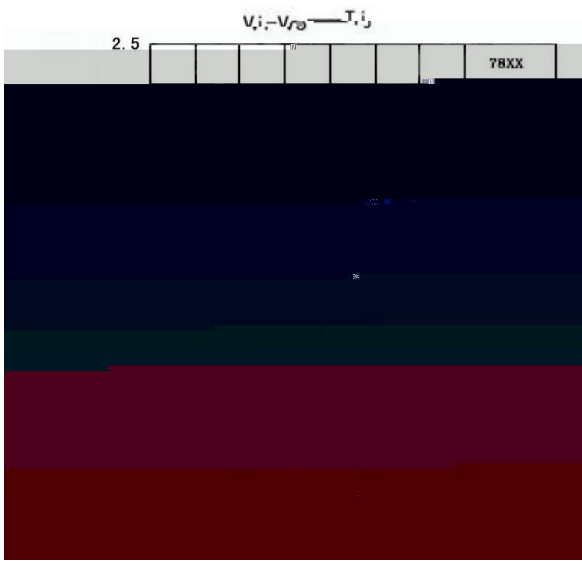
PIN1 IN PIN 2 GND PIN 3 OUT

/ Marking

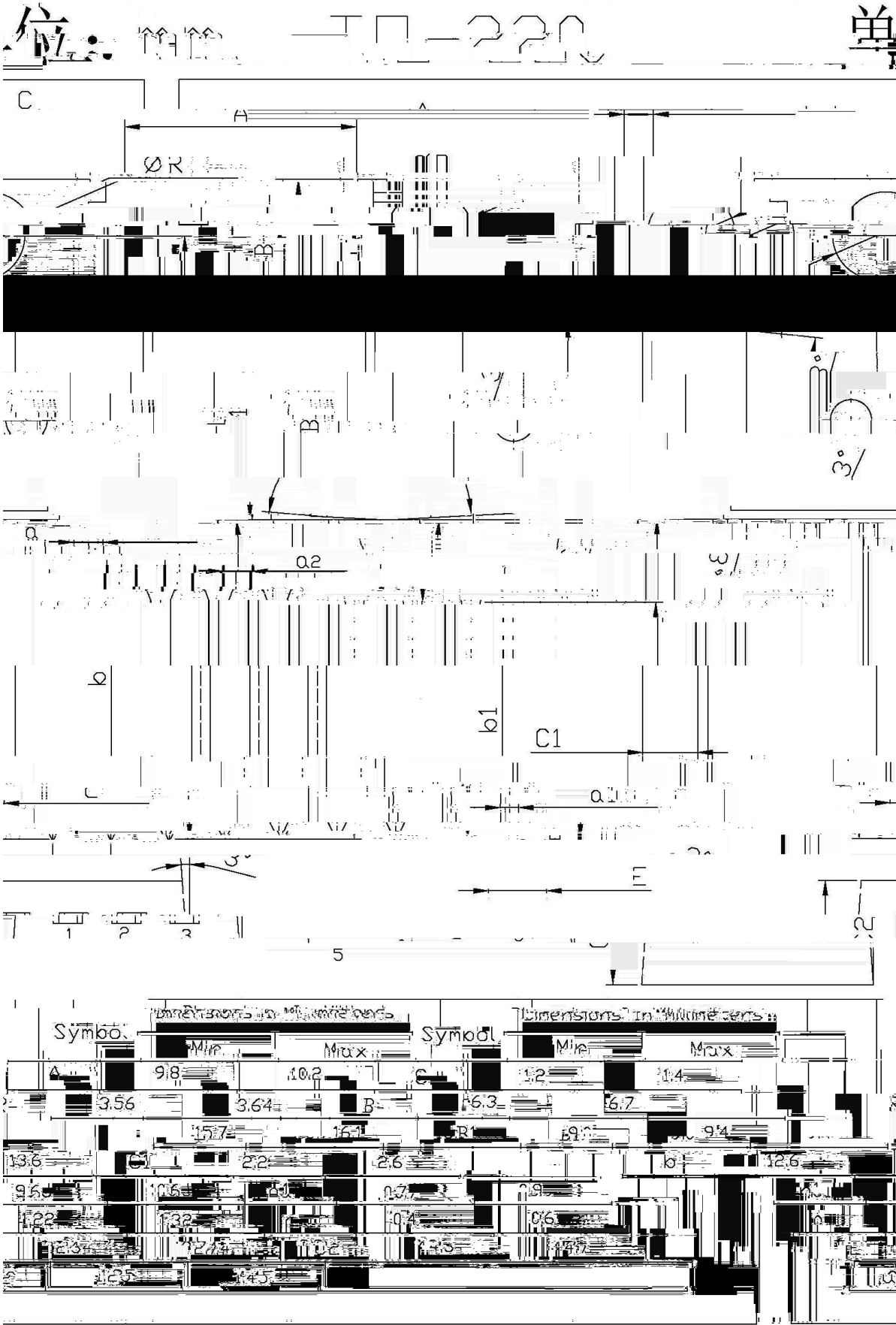
See Marking Instructions

Parameter	Symbol	Rating	Unit
Input Voltage Difference	V_I	35	V
Junction-to-Ambient	R_{JA}	50	/W
Junction-to-Case	R_{JC}	5.0	/W
Operating Temperature Range	T		

/ Electrical Characteristic Curve



/ Package Dimensions



/ Marking Instructions

