

TO-220 Voltage Regulator in a TO-220 Plastic Package.

1.0A,
3-Terminal regulators ,output current up to 1.0A, internal thermal overload protection and short-circuit limiting.

Voltage Regulator.

/

7815A

Rev.B Jun.-2024



DATA SHEET

	Symbol	Rating	Unit
Input voltage	V_i	17.5~35	V
Power Dissipation	P_D	Internally Limited	W
Thermal Resistance Junction-ambient	R_{JA}	65	/W
Thermal Resistance Junction-case	R_{JC}	5.0	/W
Operating Temperature Range	T_{OPR}	-40 125	
Storage temperature range	T_{stg}	-65 150	

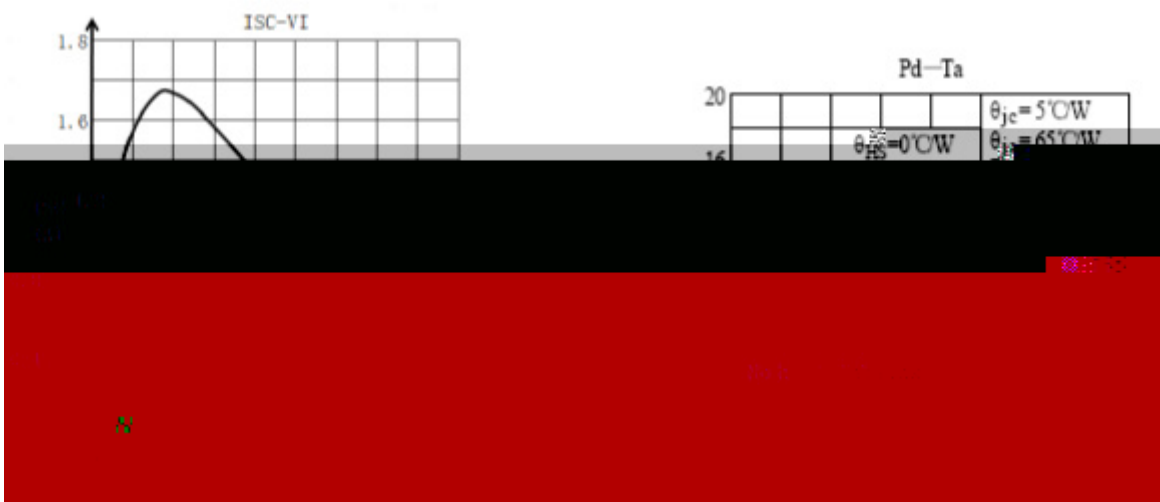
Test Conditions

T

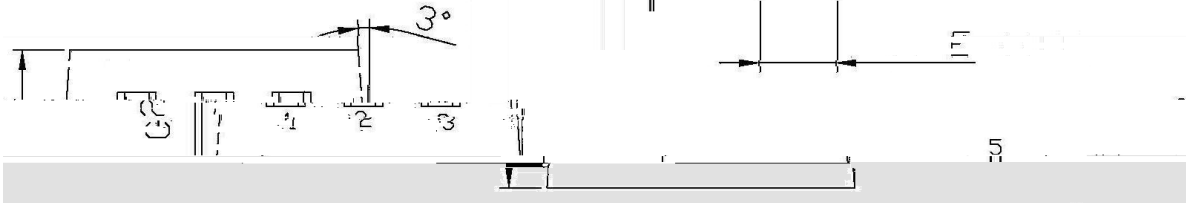
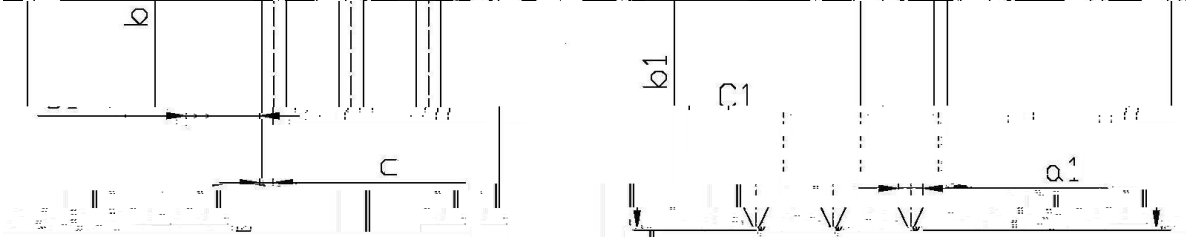
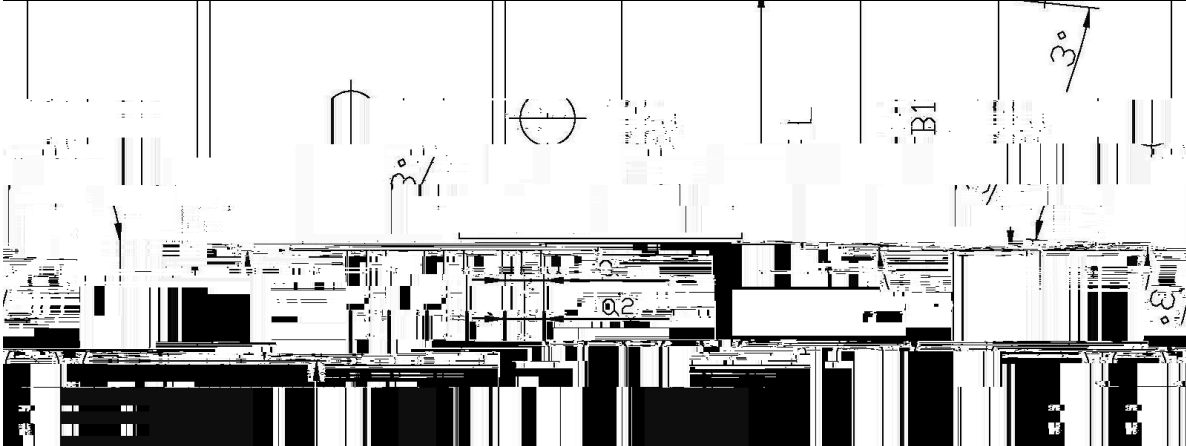
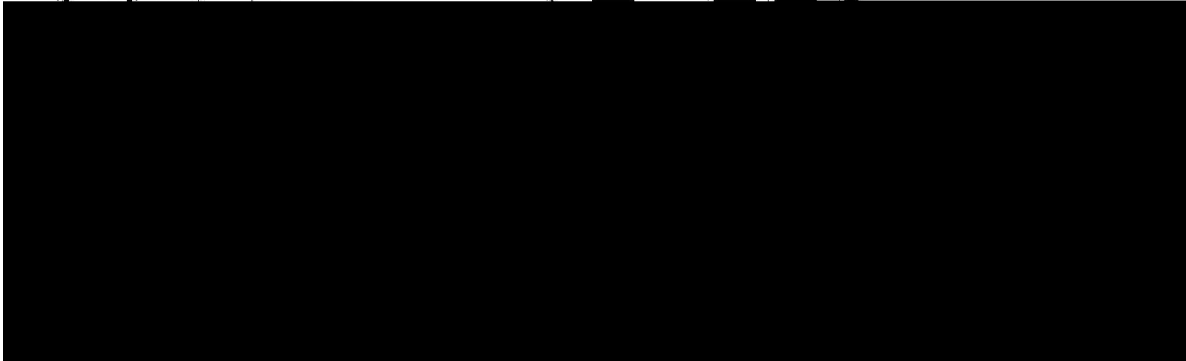
15.7

Symbol						
Output Voltage B=10Hz~100KHz	V	$T_j=25$	14.4	15	15.6	V
		$V_i=17.5V\sim30V$ $I_o=5mA\sim1.0A$	15			
Load Regulation	V_{Load}	$T_j=25$ $I_o=5mA\sim1.0A$			250	mV
		$T_j=25$ $I_o=250mA\sim750mA$			125	mV
Line Regulation	mV	$T_j=25$ $V_i=17.5V\sim30V$				
		$T_j=25$ $V_i=20V\sim26V$			125	mV
Quiescent Current	I_q	$j=25$			8.0	mA
Quiescent Current Change	I_q	$V_i=17.5V\sim30V$			1.0	mA
		$I_o=5mA\sim1.0A$			0.5	mA
Output Voltage Drift	V_o/T	$I_o=5mA$ $T_j=0\sim125$	-1.0			mV/
Output Noise Voltage	eN	$j=25$	10			V/ V_o
Supply Voltage Rejection	SVR	$V_i=18.5V\sim28.5V$	54			dB
Dropout Voltage	V_d	$j=25$		2.0		V
Output Resistance	R_o	$f=1KHz$		19		m

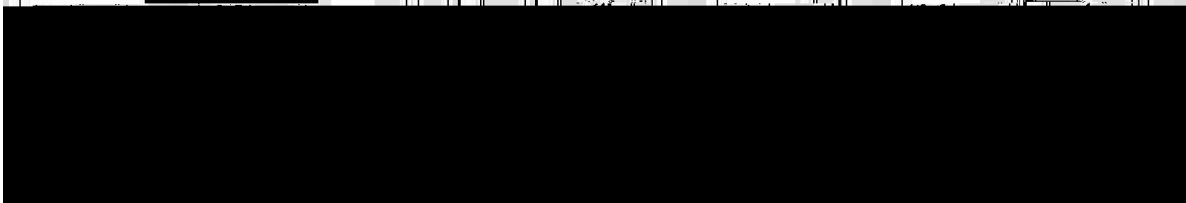
/ Electrical Characteristic Curve



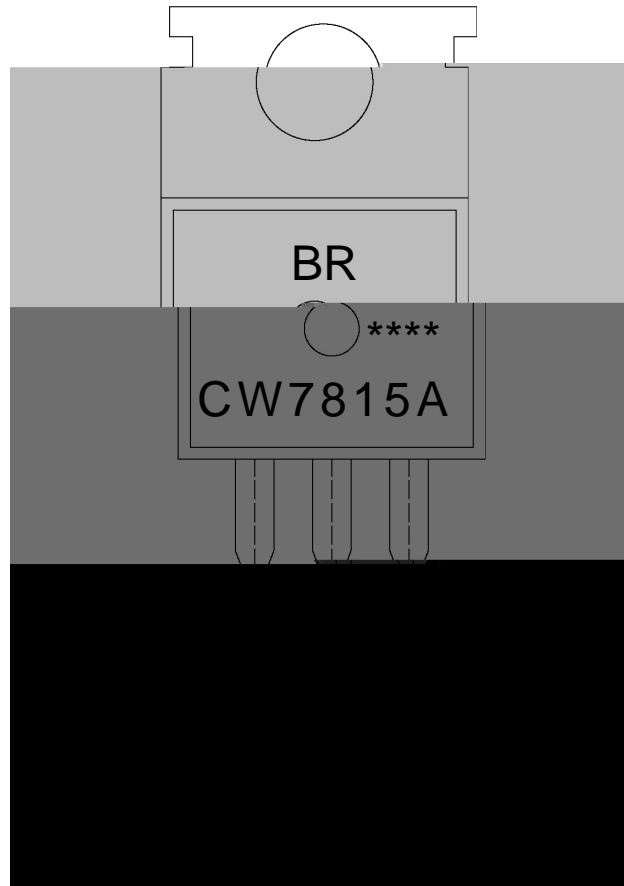
/ Package Dimensions



	Min	Max	Symbol	Min	Max
A	9.8	10.2	C	1.2	1.4
6.7			R	3.56	3.64
9.4			B	6.3	
2.6			b	12.8	13.6



/ Marking Instructions



BR

CW7815A

Note:

BR: Company Code

CW7815A: Product Type Code

****: Lot No. Code, code change with Lot No

/ Notices

PCB