

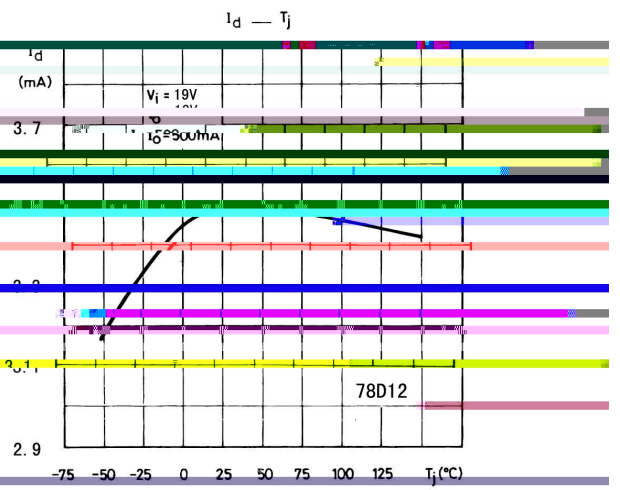
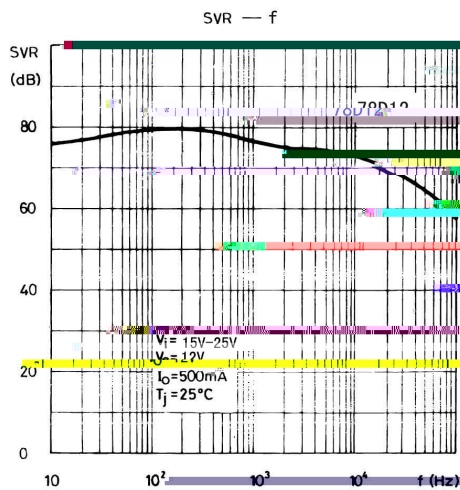
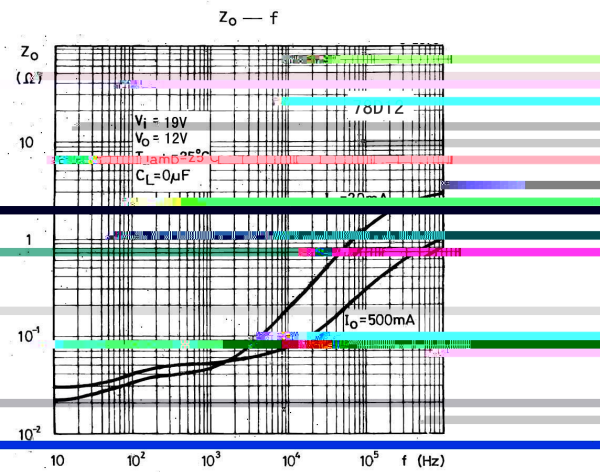
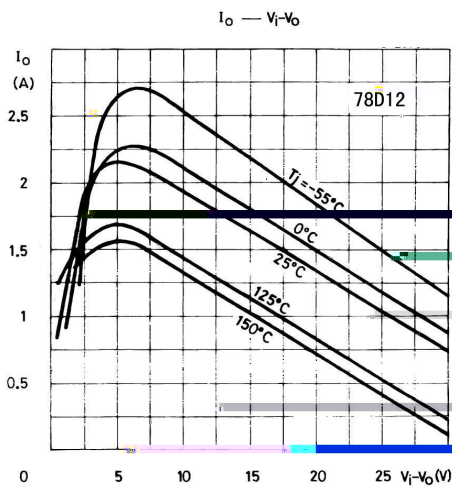
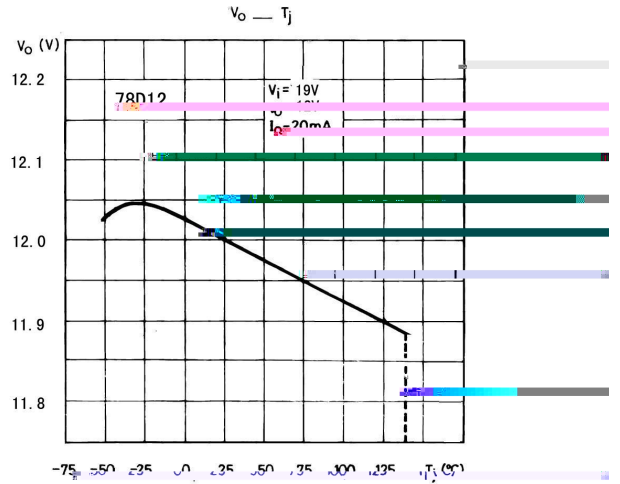
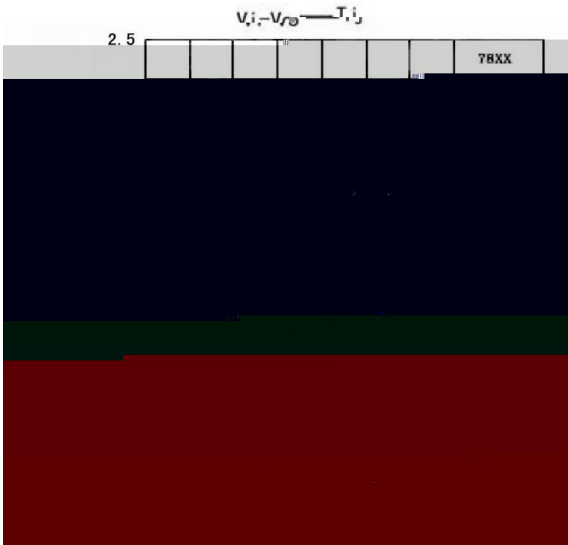
78D12
Rev.J Jun.-2024

TO-252

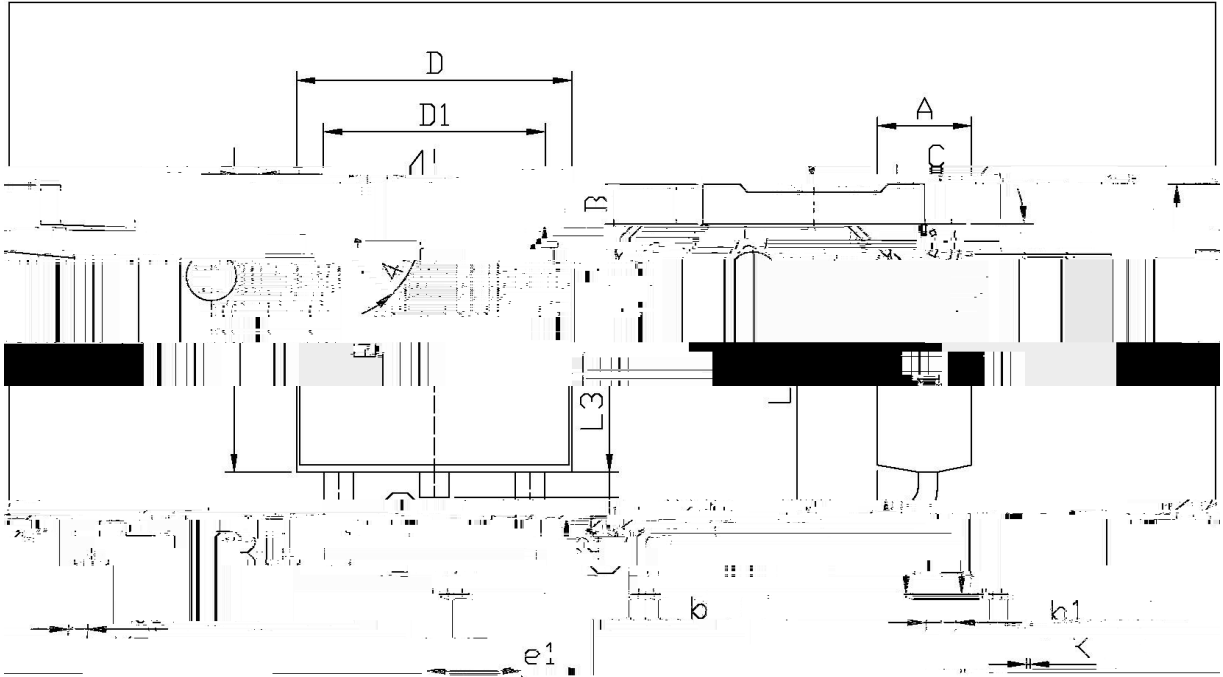
217 R166

Parameter	Symbol	Rating	Unit
-----------	--------	--------	------

/ Electrical Characteristic Curve



/ Package Dimensions



单位: mm

Dimensions	Millimeters		Inches	
	Min	Max	Min	Max
B	0.95	1.25	0.037	0.049
e1	2.24	2.34	0.088	0.092
L3	0.79	0.90	0.031	0.035
b	0.45	0.55	0.018	0.022
h1	0.45	0.55	0.018	0.022
ϕ	0.45	0.55	0.018	0.022
D	5.10	5.5	0.201	0.217

T_O = 252

78D12

() / Resistance to Soldering Heat Test Conditions

- | | | | | | |
|---|-----|-----|----|----------|--|
| | | | | | |
| 1 | 150 | 180 | 60 | 90sec; | Note:
1.Preheating:150~180 , Time:60~90sec. |
| 2 | 245 | 5 | 5 | 0.5sec; | 2.Peak Temp.:245 5 , Duration:5 0.5sec. |
| 3 | | | 2 | 10 /sec. | 3. Cooling Speed: 2~10 /sec. |

/ Resistance to Soldering Heat Test Conditions

260	5	10	1 sec.	Temp.:260±5	Time:10±1 sec
-----	---	----	--------	-------------	---------------

/ Packaging SPEC.

/ REEL