

/ Descriptions

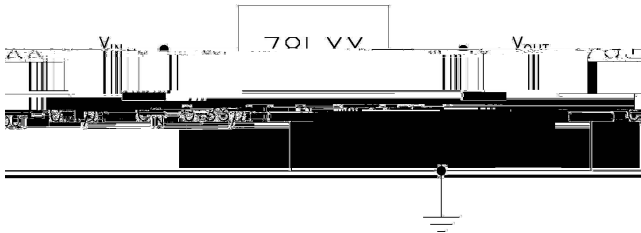
JFK\$)*

/ Features

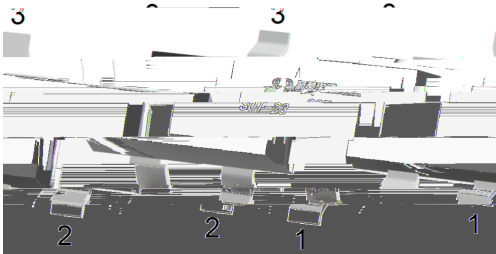
(' ' d 8#

/ Applications

/ / Equivalent Circuit or Application Circuit



/ Pinning

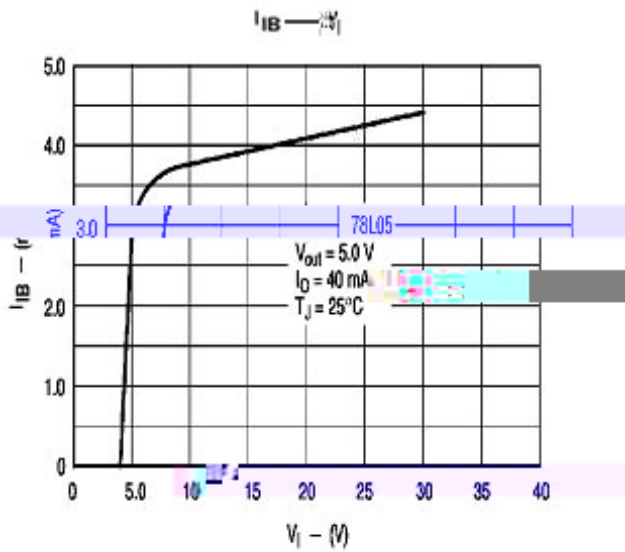
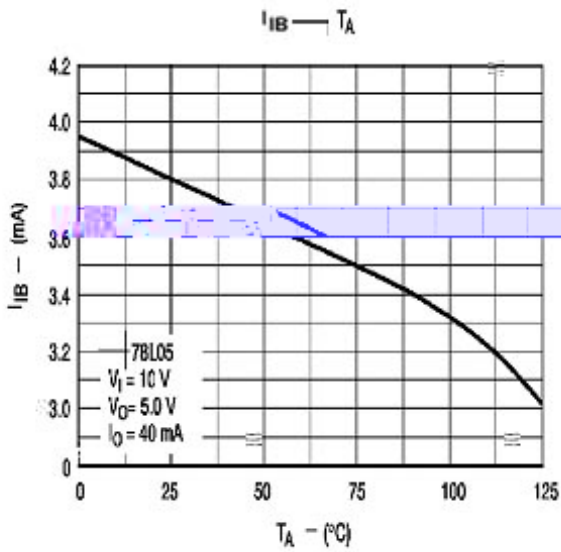
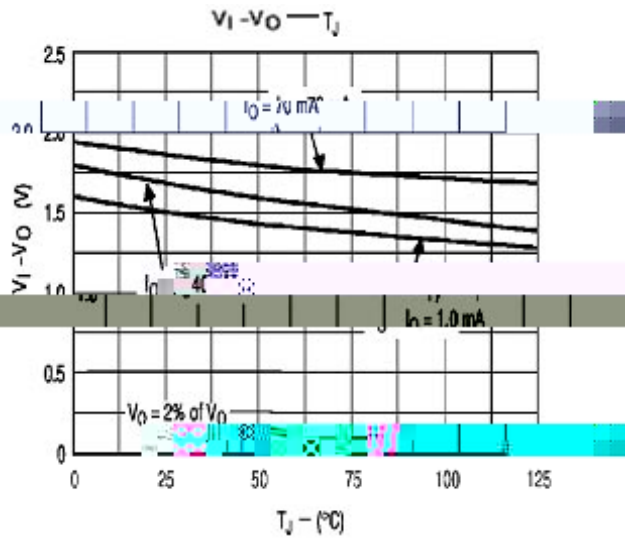
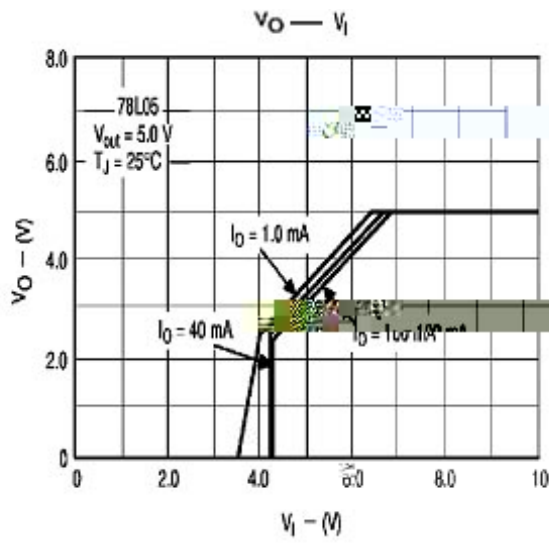


/ Marking

--	--

78L05MA

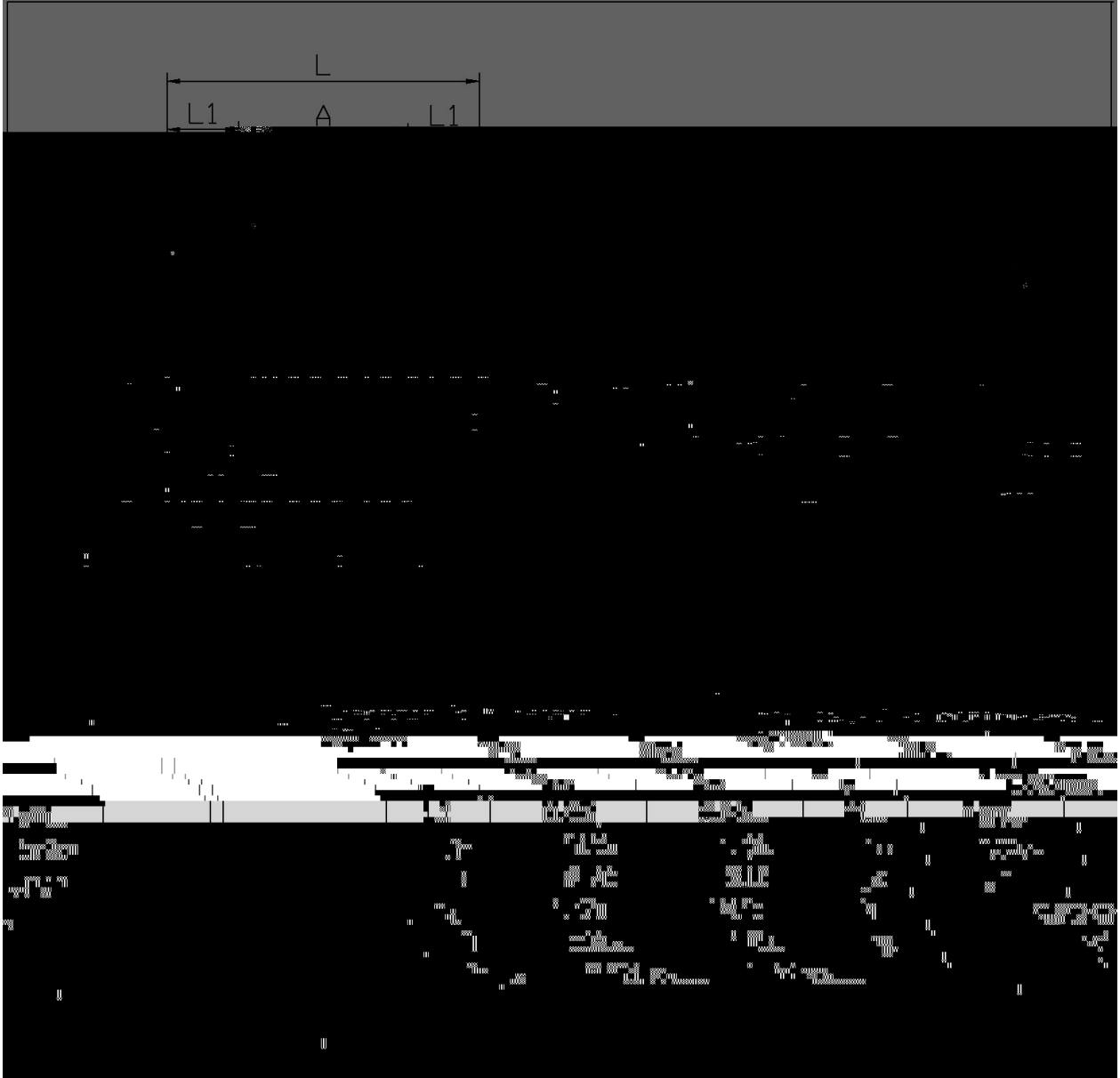
/ Electrical Characteristic Curve



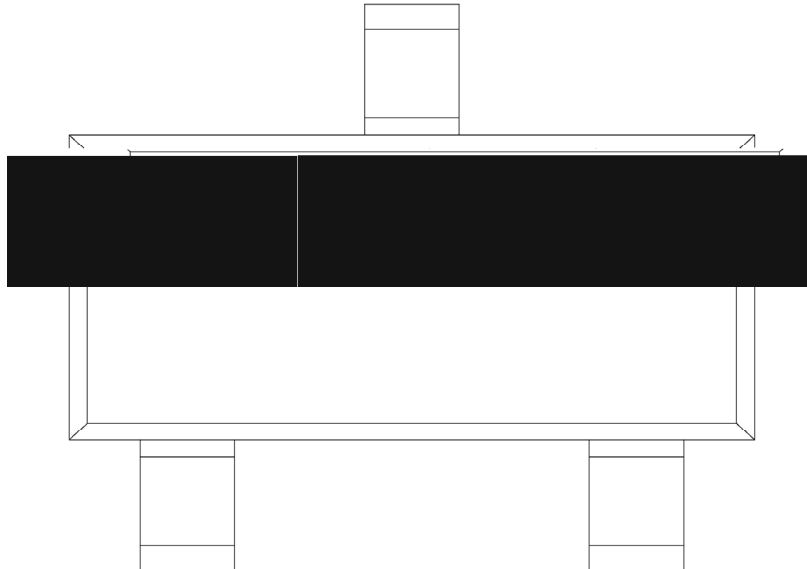
/ Package Dimensions

SOT-23

单位: mm



/ Marking Instructions



() / Temperature Profile for IR Reflow Soldering(Pb-Free)
