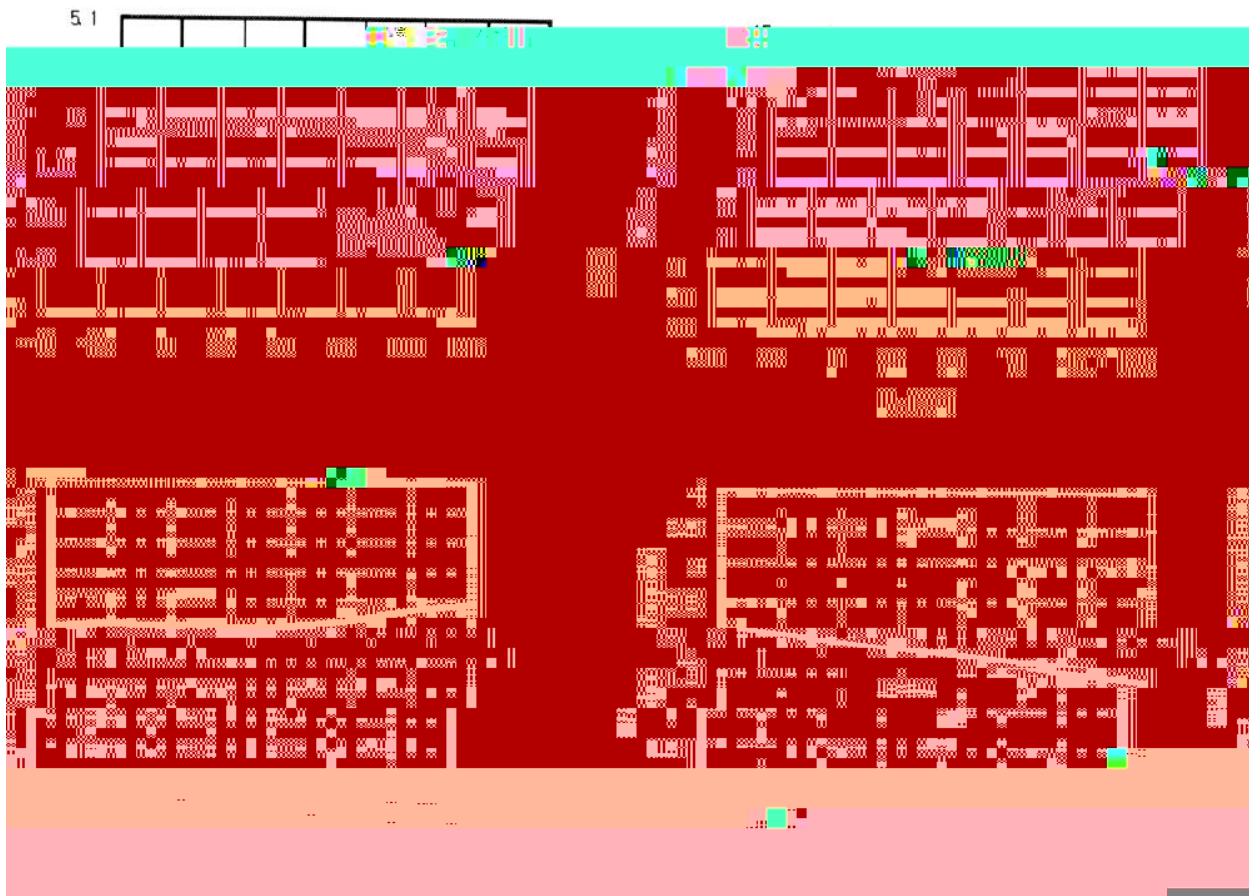




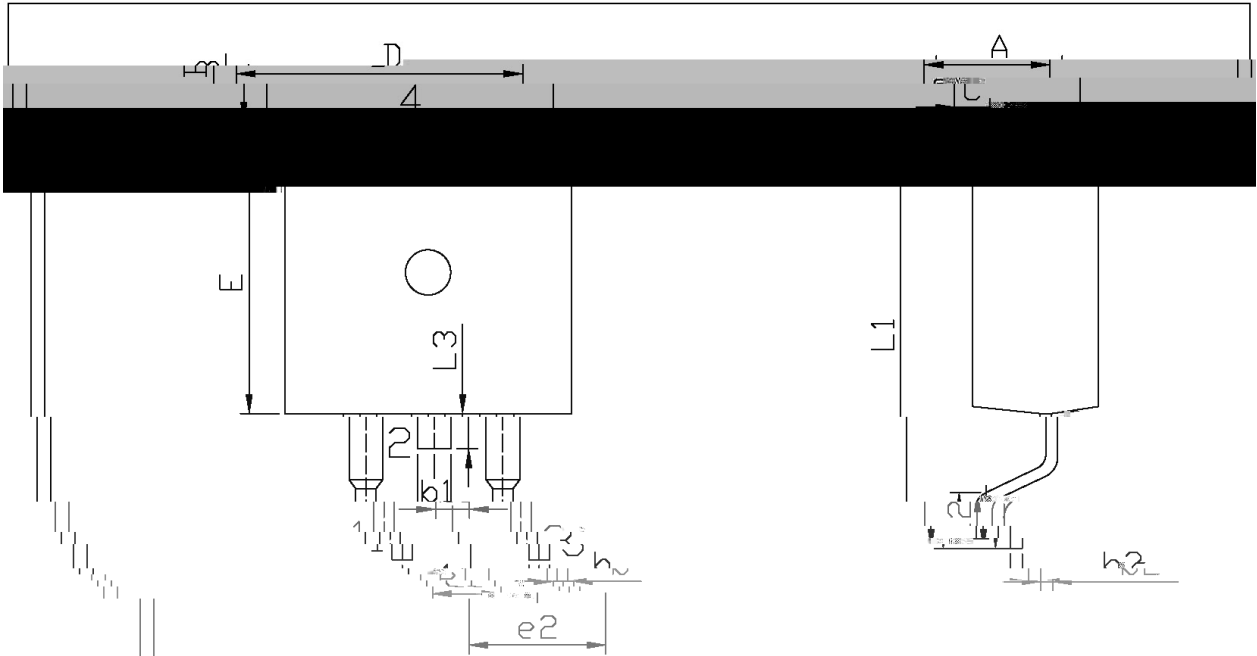
Parameter	Symbol	Rating	Unit
Input voltage	$V_I$	-35	V
Output current	$I_O$	1.0	A
Operating virtual Junction temperature	$T_J$	0 125	
Power Dissipation	$P_D$	15	W
Storage temperature range	$T_{stg}$	-65 150	

Parameter	Symbol	Test Conditions	Min	Typ	Max	Unit
Output voltage	$V_O$	$T_j=25$	-4.80	-5.0	-5.2	V
		$I_O=5mA$ to 1A $V_I=-20V$ to -7V	-4.75	-5.0	-5.25	V
Load Regulation	$V_O$	$T_j=25$ $V_I=-25V$ to -7V		3.0	100	mV
		$T_j=25$ $V_I=-12V$ to -8V		1.0	50	mV
Line regulation	$V_O$	$T_j=25$ $I_O=5mA$ to 5A			100	mV
		$T_j=25$ $I_O=250mA$ to 750mA			50	mV
Ripple rejection	RR	$V_I=-18V$ to -8V $f=120Hz$ $T_j=25$	62			dB
Output noise voltage	$V_N$	$f=10Hz-100KHz$ $T_j=25$			40	$\mu V$
Dropout voltage	$V_D$	$T_j=25$ $I_O=1A$				

/ Electrical Characteristic Curve



/ Package Dimensions

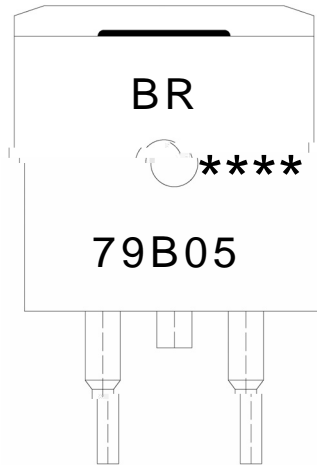


单位: mm

Dimensions in Millimeters		Dimensions in Millimeters		Dimensions in Millimeters	
Symbol	Min	Max	Symbol	Min	Max
A	4.30	4.70	E	9.00	
B	1.30	1.40	e1	2.34	
b1	1.15	1.35	L1		



**/ Marking Instructions**



BR

79B05

\*\*\*\*

Note:

BR: Company Code.

79B05: Product Type.

\*\*\*\*: Lot No. Code, code change with Lot No.

