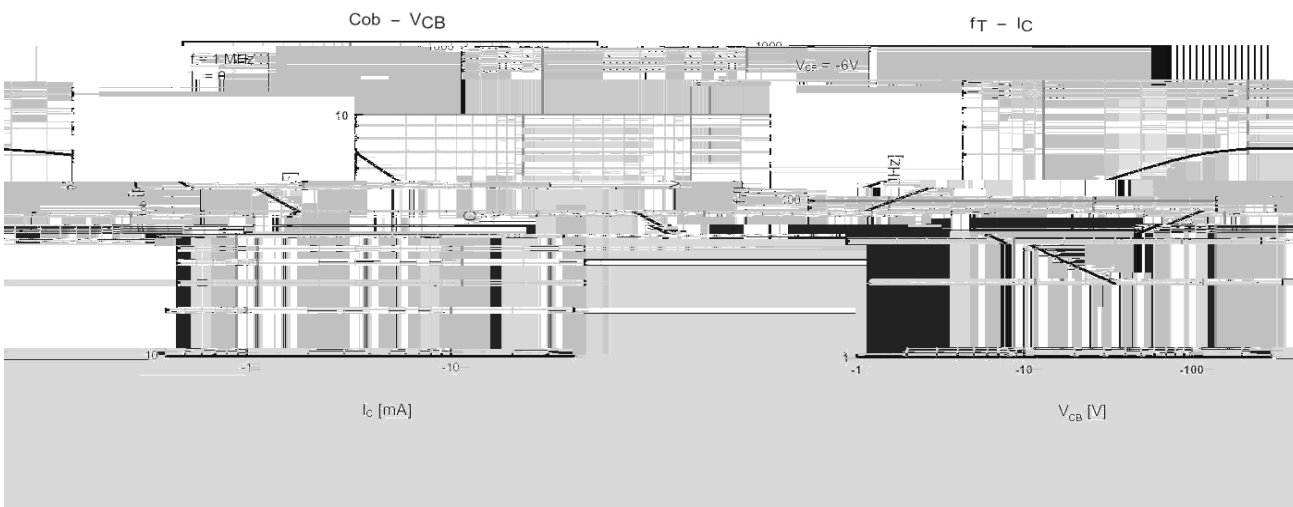
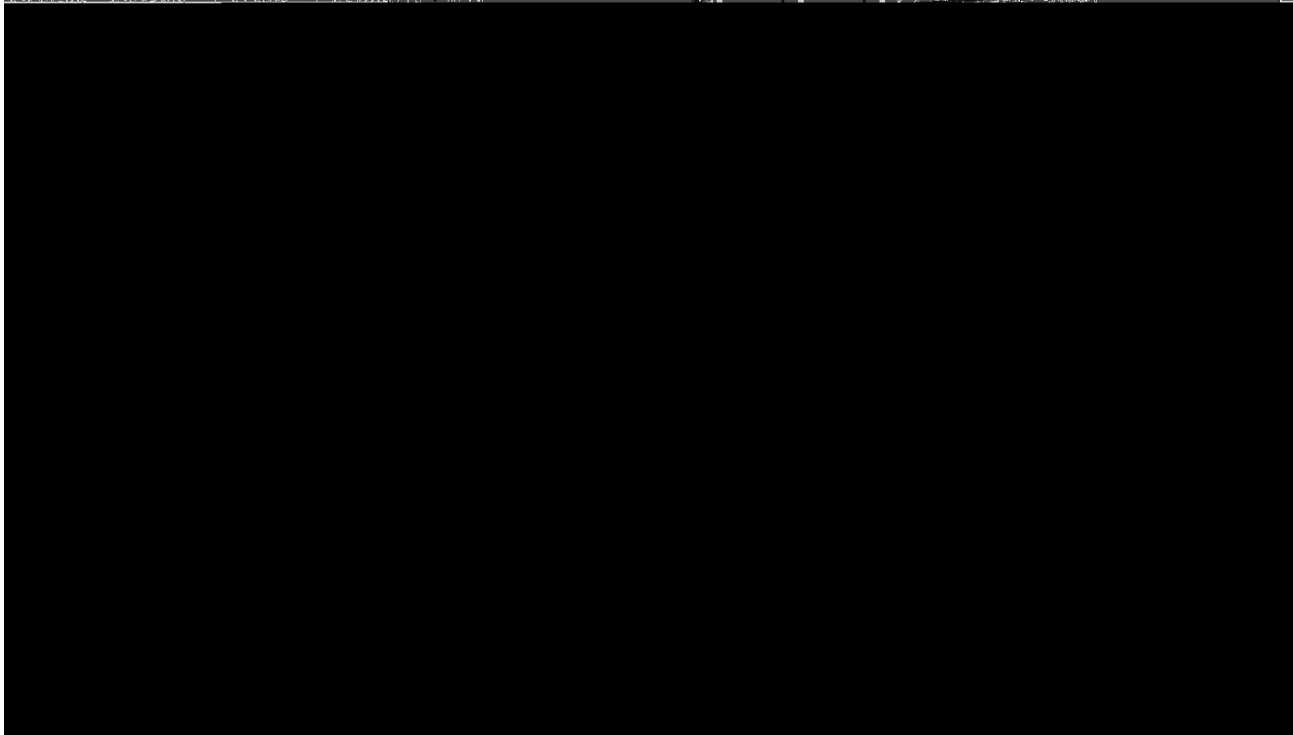


9015M
Rev.H Dec.-2023

@ f Parameter	... Z Symbol	f › Rating	% y Unit
Collector to Base Voltage	V _{CBO}	-50	V
Collector to Emitter Voltage	V _{CEO}	-45	V
Emitter to Base Voltage	V _{EBO}	-5.0	V
Collector Current	I _C	-100	mA
Collector Power Dissipation	P _C	200	mW
Junction Temperature	T _j	150	
Storage Temperature Range	T _{stg}	-55 150	

@ f Parameter	... Z Symbol	y i Ú ^ Test Conditions	Â 4 › Min	Á ° › Typ	Â Ý › Max	% y Unit
Collector to Base Breakdown Voltage	V _{CBO}					

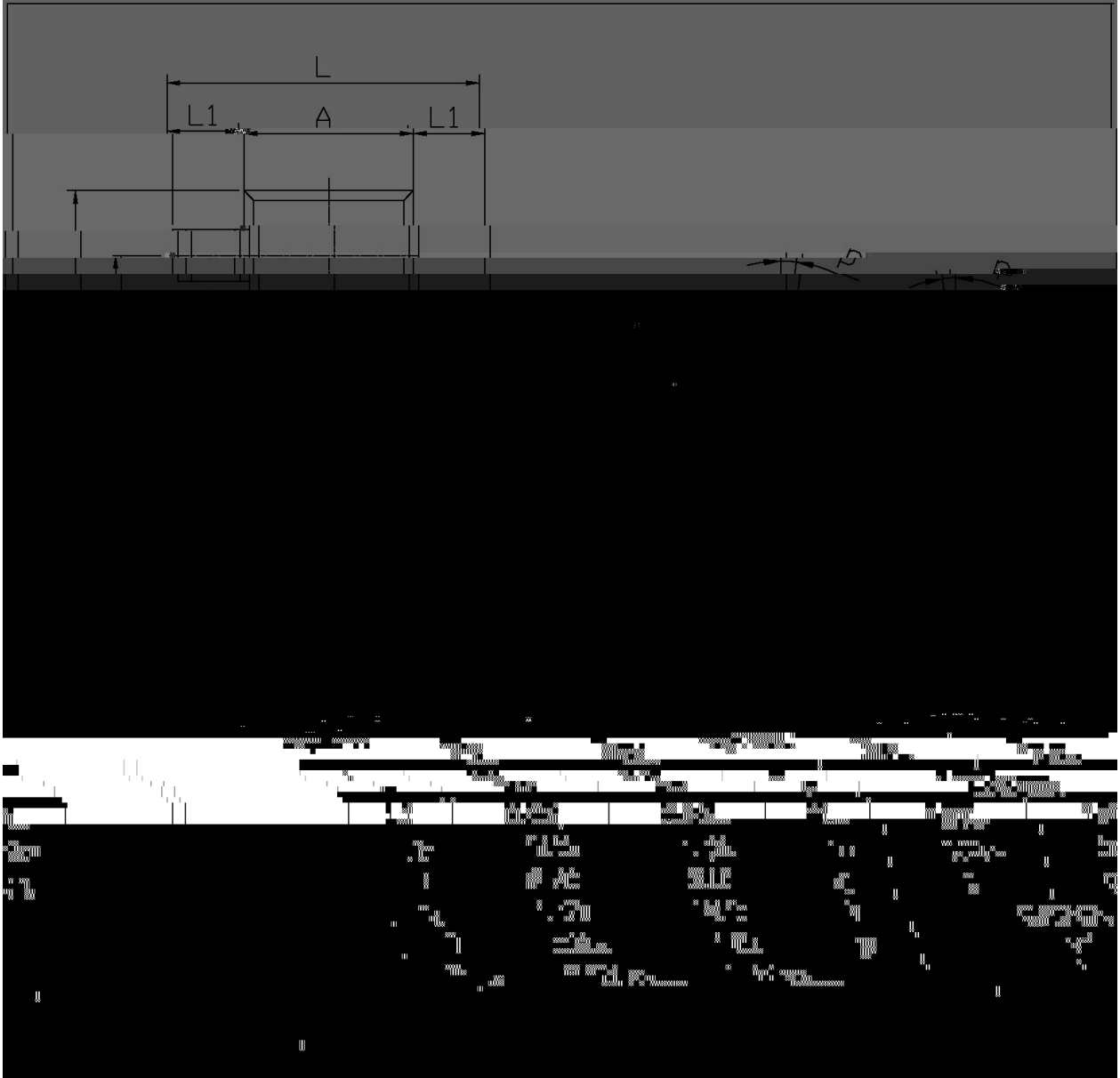
Electrical Characteristic Curve



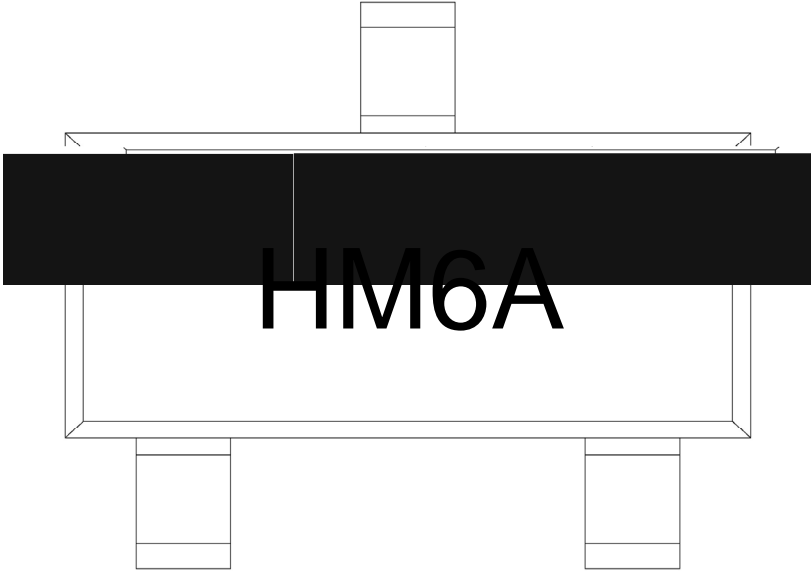
Ø □ =) φ / Package Dimensions

SOT-23

单位: mm



, M y f / Marking Instructions



^a φ y
. y , [W A
3 y ° Z W A
' y h_{FE}) W A

Note:
. y Company Code
3 y Product Type Code
' y h_{FE} Classifications Symbol Code

šWD t...•Žϕ (x/) / :KSVKXGZ[XK 6XULORK LUX /8 8KLRU] 9URJKXOTM 6

^a ϕ y

- 1. Preheating: 150~180 °C, Time: 60~90sec;
- 2. Peak Temp.: 245 °C, Duration: 5 r 0.5sec;
- 3. Cooling Speed: 2~10 °C/sec.

Note:

- 1. Preheating: 150~180 °C, Time: 60~90sec.
- 2. Peak Temp.: 245 °C, Duration: 5 r 0.5sec.
- 3. Cooling Speed: 2~10 °C/sec.

ÂD /Cã p ~ »] / Resistance to Soldering Heat Test Conditions

“† y 260 r5 - ž • y 10 r1 sec. Temp.: 260±5 Time: 10±1 sec

G P á / Packaging SPEC.

2 & x / REEL

Package Type	Units	Dimension	(unit μm ³)
7>û ~ E			