

**/ Descriptions**

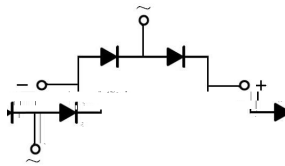
**/ Features**

( ' Mu ( ' ' ' M ' %8

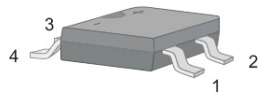
**/ Applications**

%

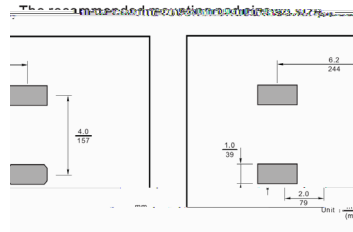
**/ Equivalent Circuit**



**/ Pinning**



PIN	DESCRIPTION
1	Input Pin (..)
2	Input Pin (~)
3	Output Anode (+)
4	Output Cathode (-)

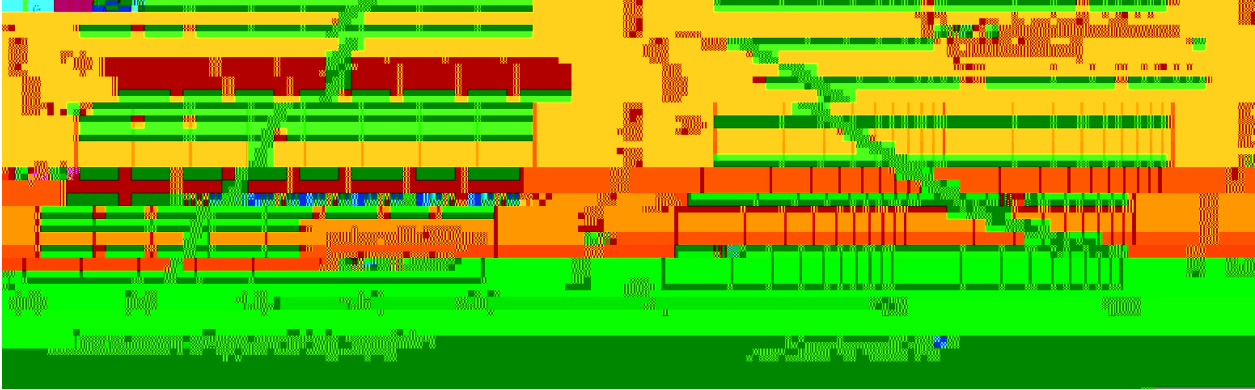
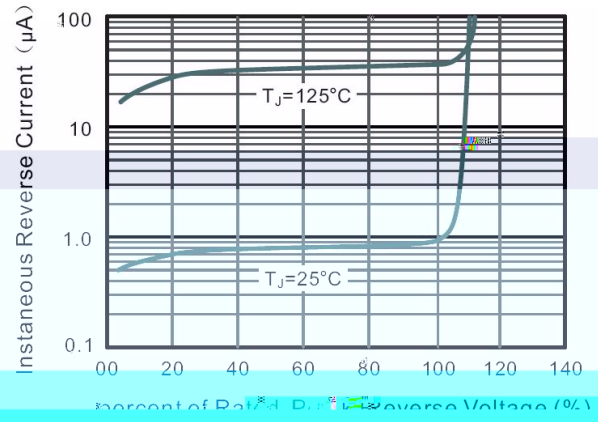
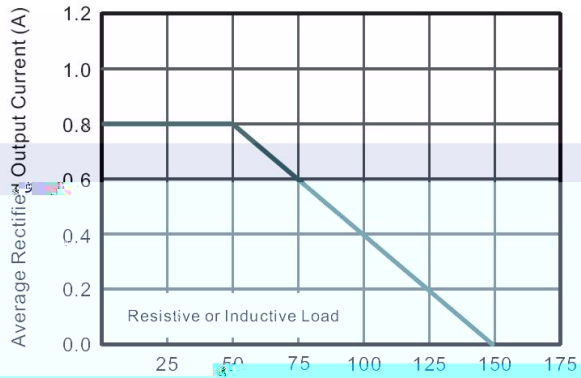


**/ Marking**



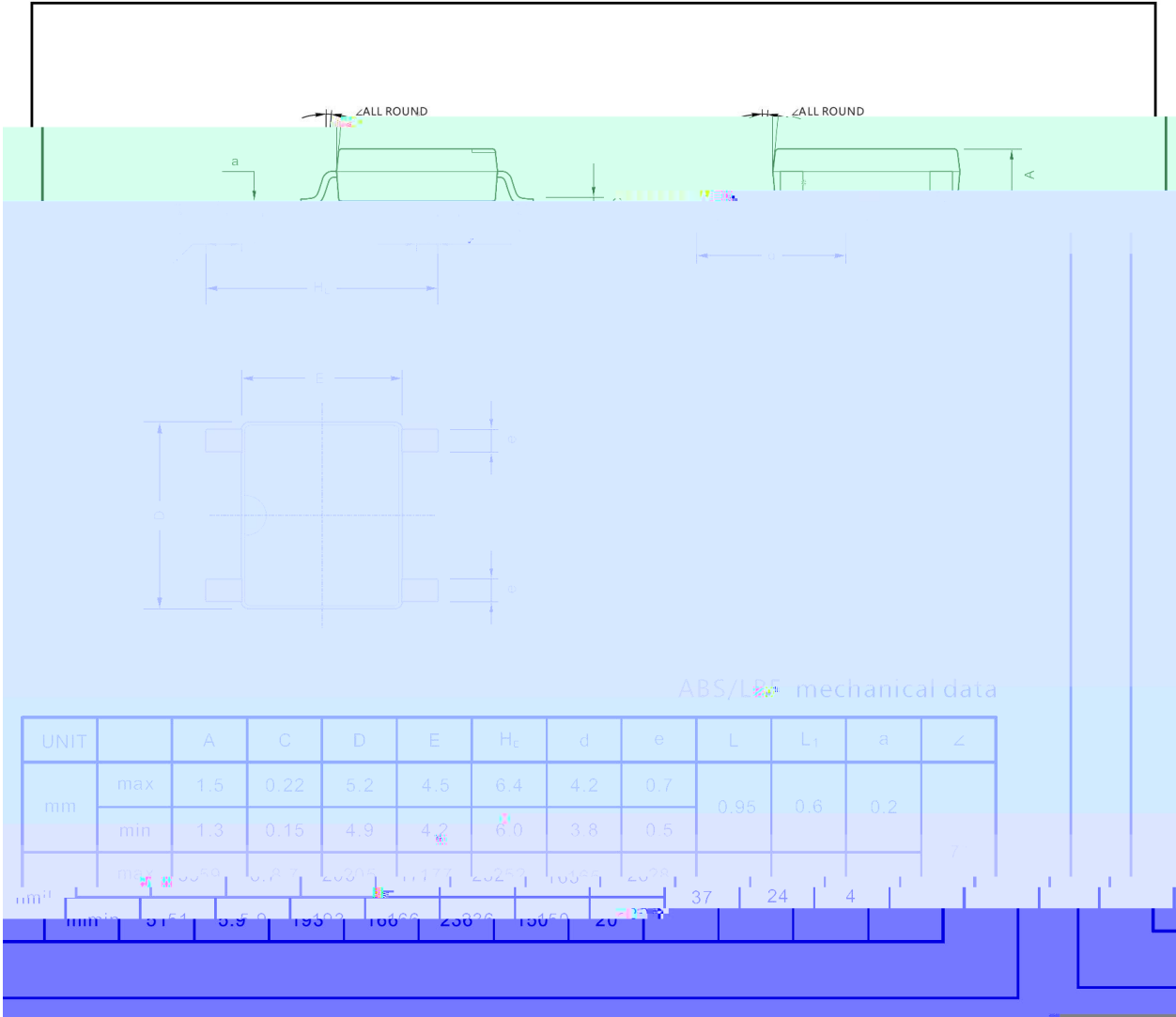

			μ

/ Electrical Characteristic Curve



/ Package Dimensions

ABS/LBF



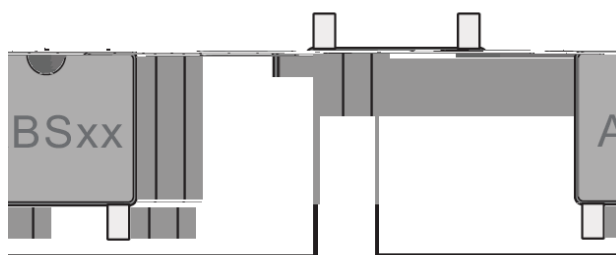
ABS/LBF mechanical data

UNIT		A	C	D	E	H <sub>c</sub>	d	e	L	L <sub>1</sub>	a	∠
mm	max	1.5	0.22	5.2	4.5	6.4	4.2	0.7	0.95	0.6	0.2	7
	min	1.3	0.15	4.9	4.2	6.0	3.8	0.5				
mil	max	59	9	209	177	256	169	28	37	24	8	
mil	min	51	6	193	166	236	150	20				

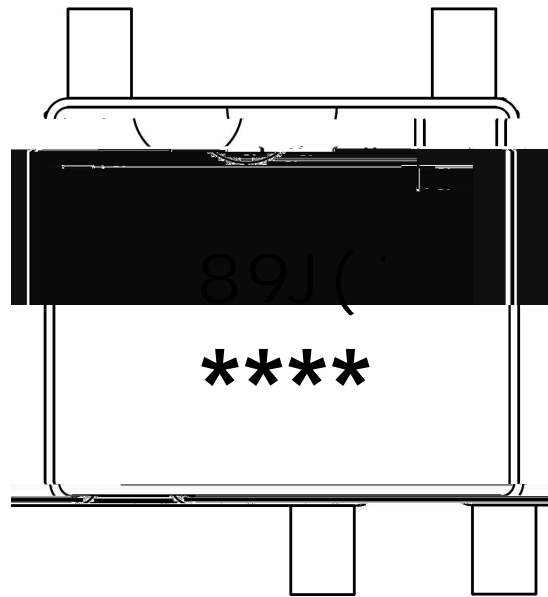
/ Marking Instructions

### Marking

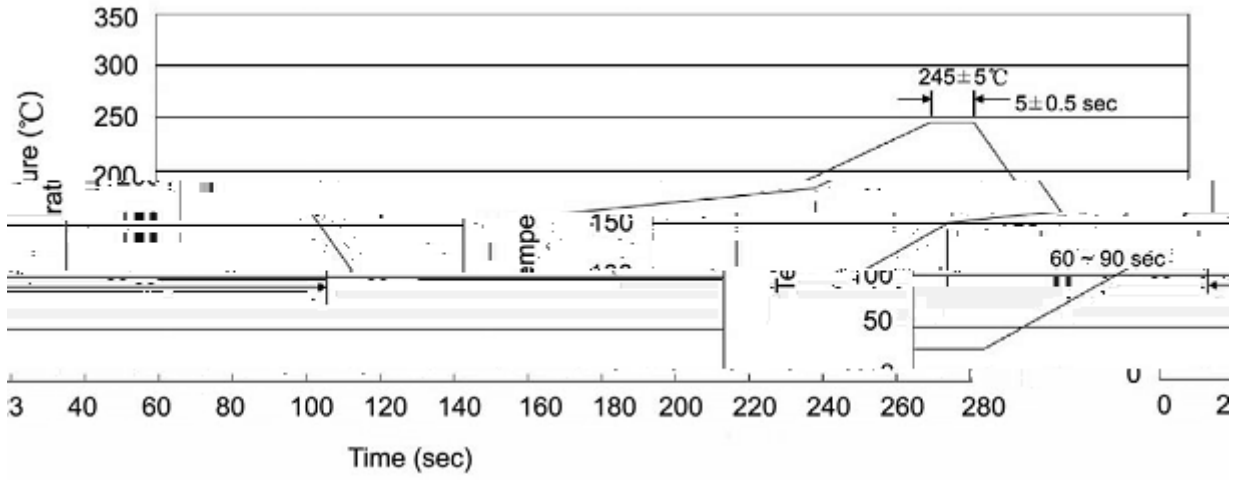
Type number	Marking code
ABS1	ABS1
ABS2	ABS2
ABS4	ABS4
ABS6	ABS6
ABS8	ABS8
ABS10	ABS10



/ Marking Instructions



( ) / K\ d g\ iXk i\ 'Gif] \d ]fi @ ' l \]fn Jfd \i e^ ŽGY\$=i\ \ž



...

/ Resistance to Soldering Heat Test Conditions

...