



--	--	--	--	--

BRAD6265SC  
BRAD6265SC

PWM

CC/CV

90V~264V

BRAD6265SC

UVLO

OTP

OCP

FB



431

CC/CV

FB

# BRAD6265SC

Rev.A Jul.-2021



DATA SHEET

-

□		90~264V
	BRAD6265ASC	12W
□	<del>BRAD6265BSC</del>	10W
	BRAD6265CSC	7W
	BRAD6265DSC	5W
	BRAD6265ESC□	

s□

o C



**& ' ( ) / Marking**

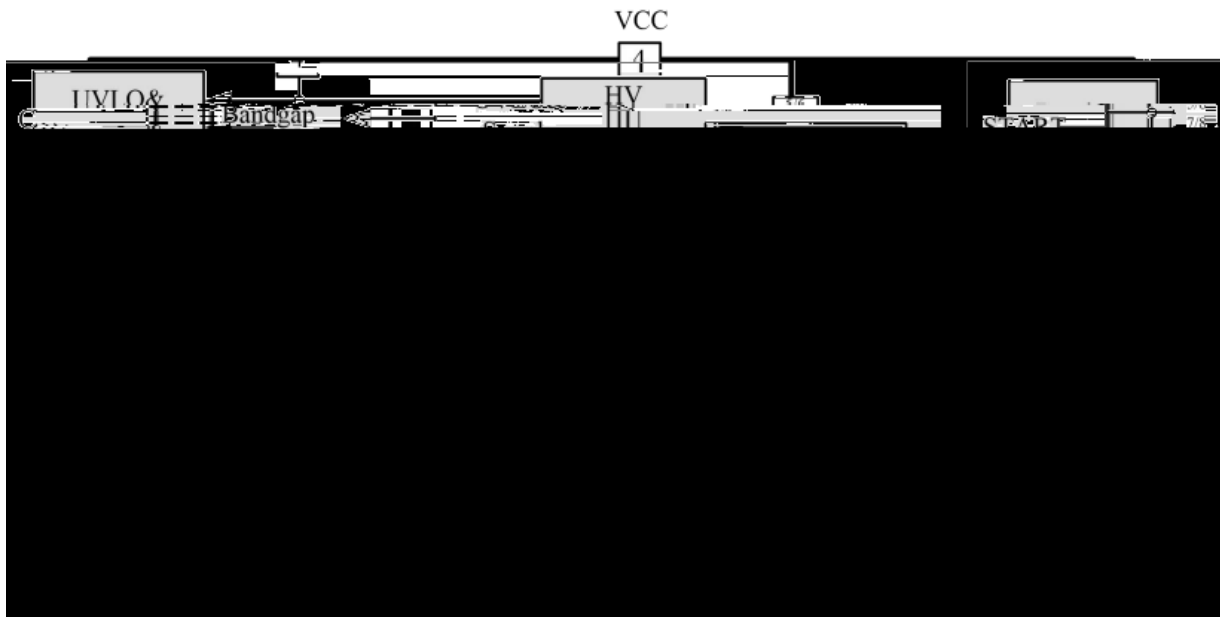
See M



**I ; < 8 9 / Electrical Characteristics(Ta=25: )**

Parameter	Symbol	Test Conditions	Min	Typ	Max	Unit
	T <sub>OFF_MAX</sub>			7		ms
	F <sub>MAX</sub>				70	kHz
	I <sub>COMP_MAX</sub>			10		uA
= > ? @						
	TH			165		
	REC			135		°C
A B 4Ω- .						
	V <sub>CBO</sub>			700		V

**J K L M / Functional Block Diagram**



**A < " . / Functional Description**

E O F E G H I 5



$$V_O = \frac{1.2 R_{FBL} R_{FBH}}{R_{FBL}} \frac{N_S}{N_{AUX}} V_D \quad 4$$

YZ [ \ 55

BRAD6265SC

FB

1

FB

2

$$\frac{V_{OUT}}{V_{OUT}} = \frac{I_{COMP} R_{FBL} // R_{FBH} 10^6}{1.2} 100\% \quad \_ 8$$

V<sub>OUT</sub>

+ / 5 0 1 2 S ] ^ \_ ` 5

BRAD6265SC

CS

R<sub>S</sub>

CS

RC

? @ A < 55

BRAD6265SC

\_ UVLO` VCC

\_ OTP`

VCC

\_ OCP`

CS

VCC

a+4 P b 5

BRAD6265SC PCB

VCC

2.2uF

X7R

6.3V

4.7uF/10V VCC

VCC GN

C



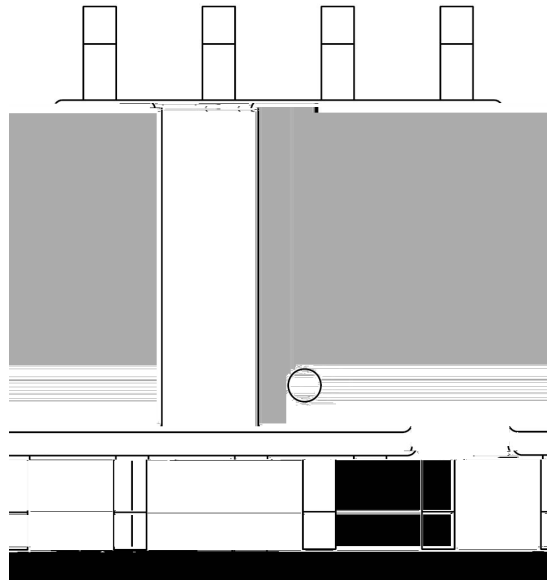
**Ł 8 9 c Y M / Electrical Characteristic Curve**



**BR**

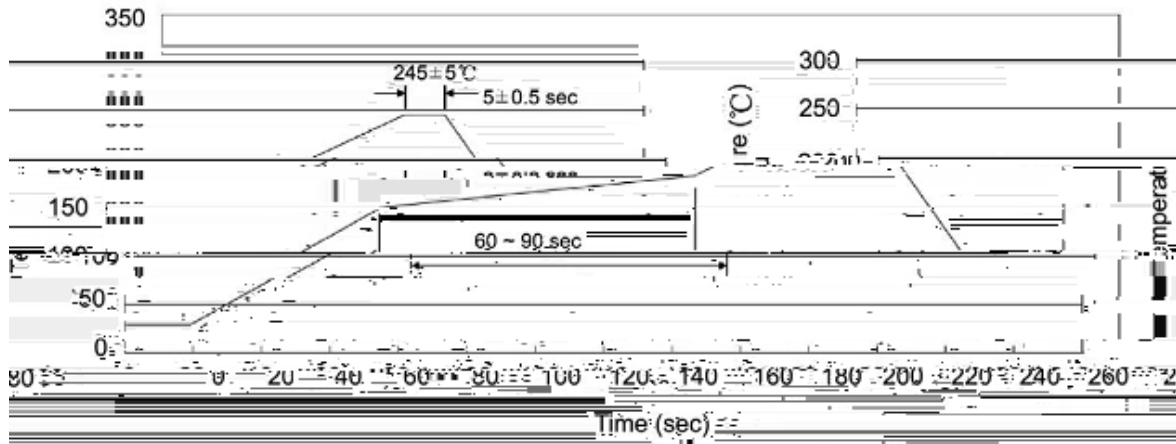


**& ' h i / Marking Instructions**





j O k > l c Y M(mn ) / Dop qorsturo 5 r v y 5 v r 5 ( 5 o v y | 5 v y ) o r x - € , a f „ 3 r o o ...



Note:

- 1            150 180            60 90sec;            1.Preheating:150~180 , Time:60~90sec.
- 2            245 5                    5