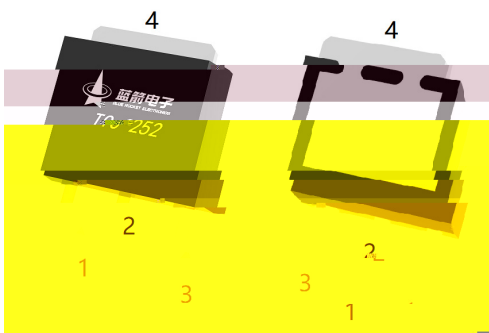


TO-252



/ Marking

/ Electrical Characteristic Curve

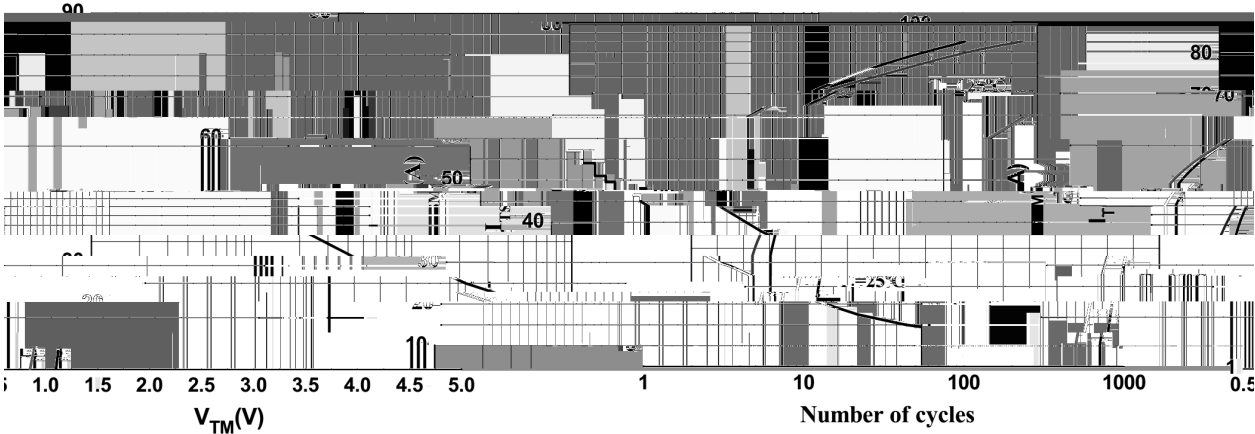
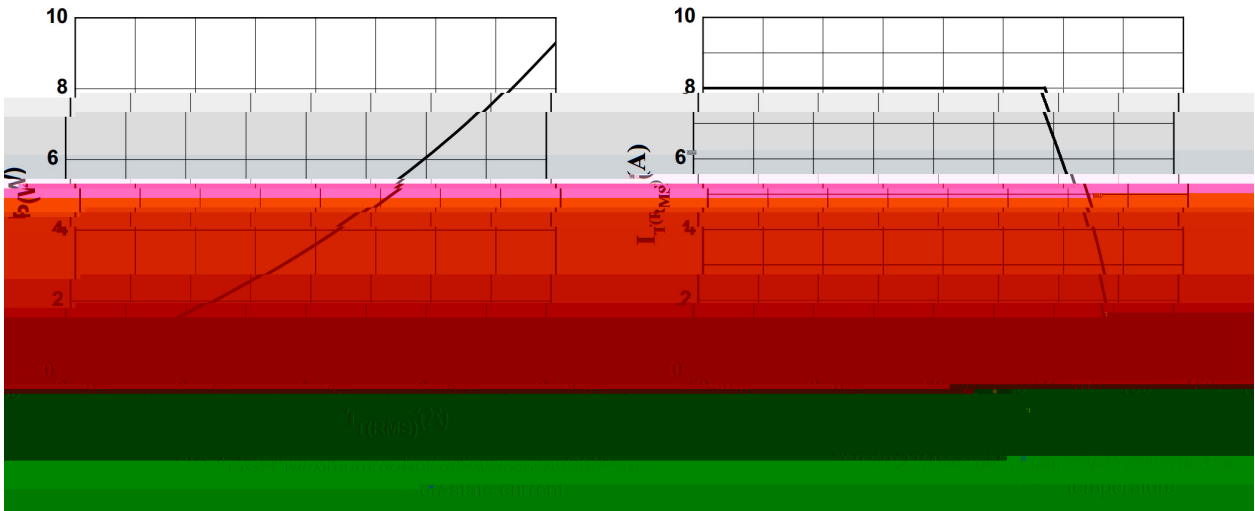


FIG.4: On-state characteristics

FIG.3: Surge peak on-state current versus

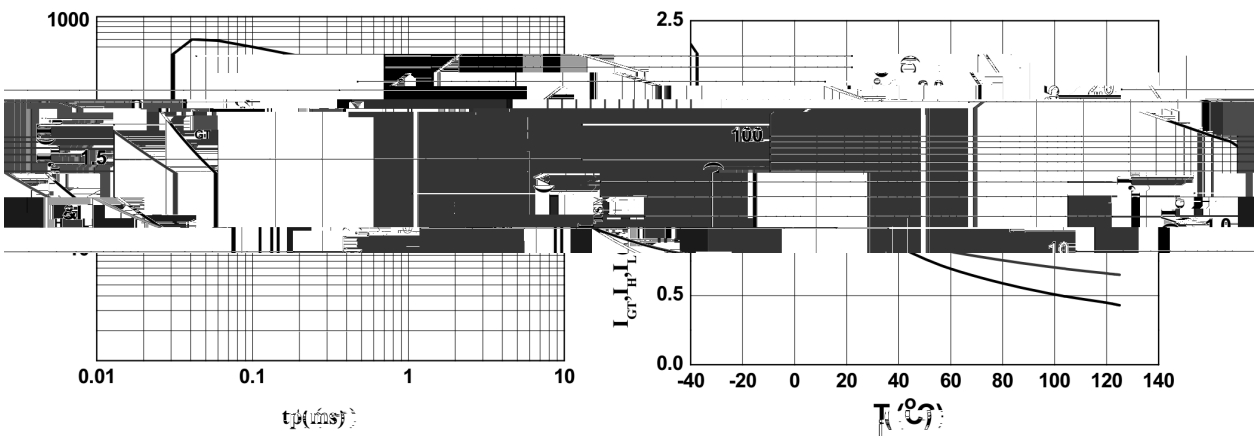
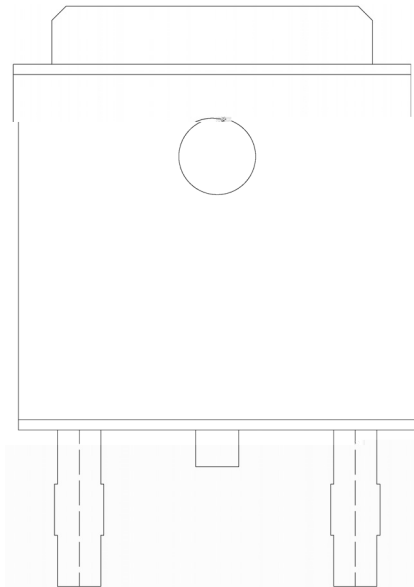


FIG.5: Non-repetitive surge peak on-state current

FIG.6: Current versus temperature

/ Package Dimensions

/ Marking Instructions



BR

BT0808

CW

IGT

BRBT0808CWDP