

BRBT0808SWDP

Rev.A Nov.-2023

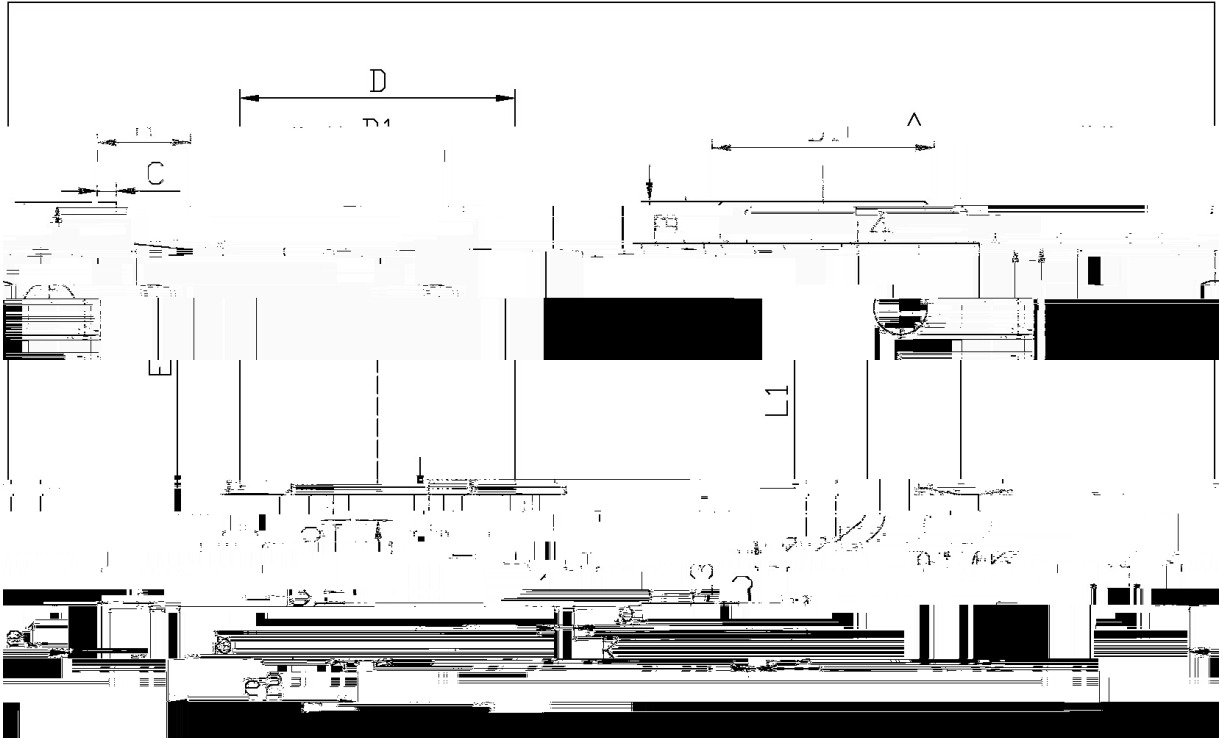


DATA SHEET

Triac in a TO-252 Plastic Package.

Parameter	Symbol	Rating	Unit
Repetitive peak off-state/reverse voltages($T_j=125$)	V_{DRM}/V_{RRM}	800	V
RMS on-state current($T_C=110$)	$I_{T(RMS)}$	8	A
Non repetitive surge peak on-state current(full cycle, $T_j=25^{\circ}C$)	$I_{TSM}(t=20ms)$	80	A
I^2t value for fusing($T_j=25$)	$I^2t_{(tp=10ms)}$	32	A^2s
Critical rate of rise of on-state current ($I_G = 2I_{GT}$, $f=120Hz$ $T_j=125$)	di/dt I-II-III	50	$A/\mu s$
Peak gate current($t_p = 20\mu s$ $T_j=125$)	I_{GM}	4.0	A
Average gate power dissipation($T_j=125$)	$P_{G(AV)}$	1.0	W
Operating junction temperature range	T_j	-40 125	
Storage junction temperature range	T_{stg}	-40 150	
Junction to ambient(AC)	$R_{th(j-a)}$	100	/W
Junction to case for(AC)	$R_{th(j-c)}$	3.1	

/ Package Dimensions

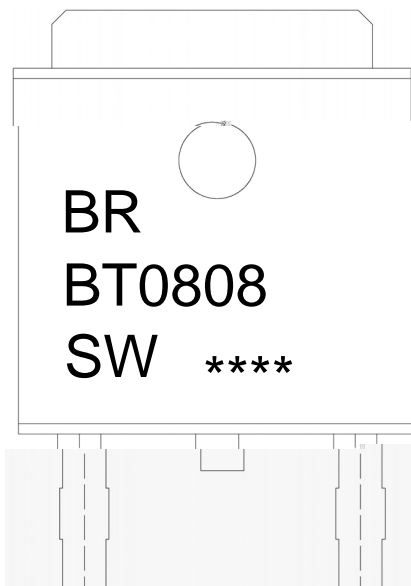


单位: mm

Symbol	Min	Max	Symbol	Min
A	2.30	2.40	F	5.95
B	0.50	0.55	G	4.75
b1	0.45	0.55	H	9.45
C	0.50	0.55	I	0.40
D	0.60	0.65	J	0.35
E	0.60	0.65	K	0.00

02-252

/ Marking Instructions



Note:

BR: Company Code

BT0808: Product Type Code

SW: I_{GT} Bracket code

****: Lot No. Code, code change with Lot No

DATA SHEET

~90sec.

5 0.5sec.

sec

(unit mm³)