

/ Descriptions

9l : D)+ : (- J: JF G\$/ (- BY'k @:

/ Features

(%M)%~, %M (D _q (%~) %M
 +' ' B_q
 : D F J +' ' I 8 (%d 8

(-

()/
 , d j
 (' ' < J; ? 9D - BM
 " & \$) ' ' d 82

/ Applications

/ Pinning



/ Pinning

G'e	E Xd \	Kpg\	; \j Zi`gkf e
(E:	\$	
)	E:	\$	
*	E:	\$	
+	>E;	>ifl e[
,	J; 8	@F	&
-	J: C	@gl k	
.	N: 9	@gl k	
/	M:	Gf n \i	

/ Marking

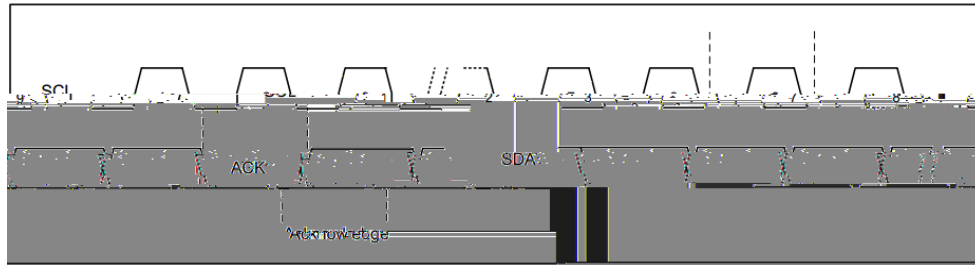
/ Absolute Maximum Ratings(Ta=25)

			mA
			V

/ Reliability Characteristic

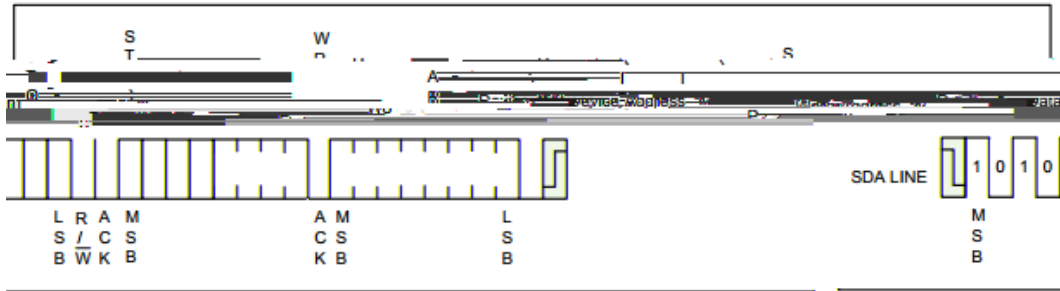
		"				
		"				
			-			

/ Functional Description



/ Functional Description

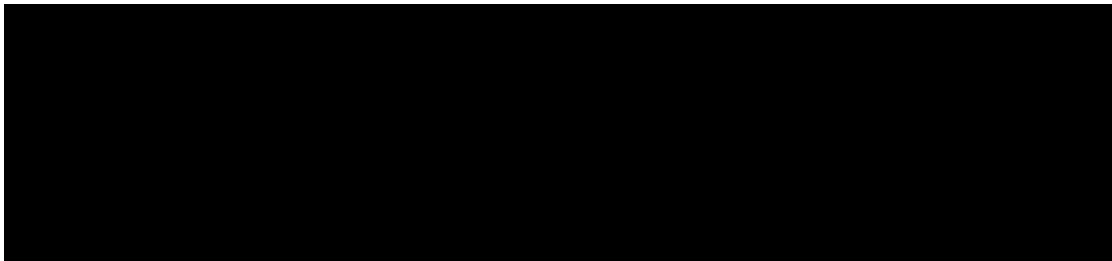
/ Functional Description



/ Page Write

9l : D) + : (- J :

9l : D) + : (- J :



+

9l : D) + : (- J :

(-

/ Functional Description

/ Acknowledge Polling

9I : D) +: (- J :
&

9I : D) +: (- J :

/ Functional Description

/ Read Identification Page

(-
('((Y 8. &8- ' 8, 8+ &8' @
(- (' [- @

/ Functional Description

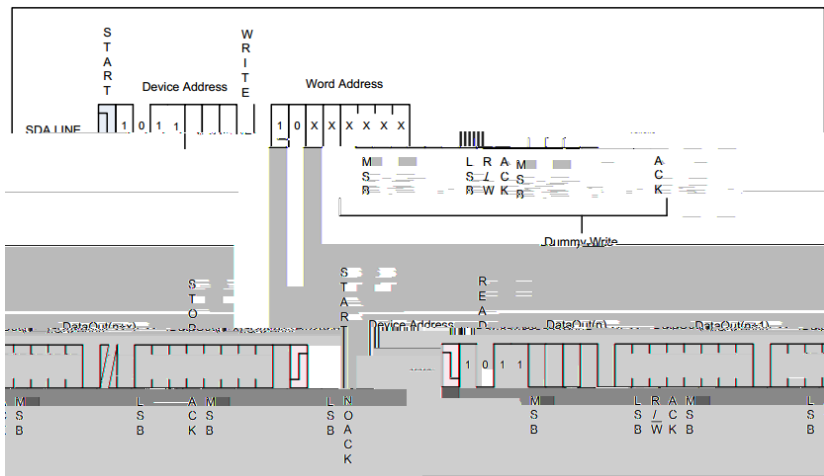
8. 8- (') ('

/'_

()/ (-

()/

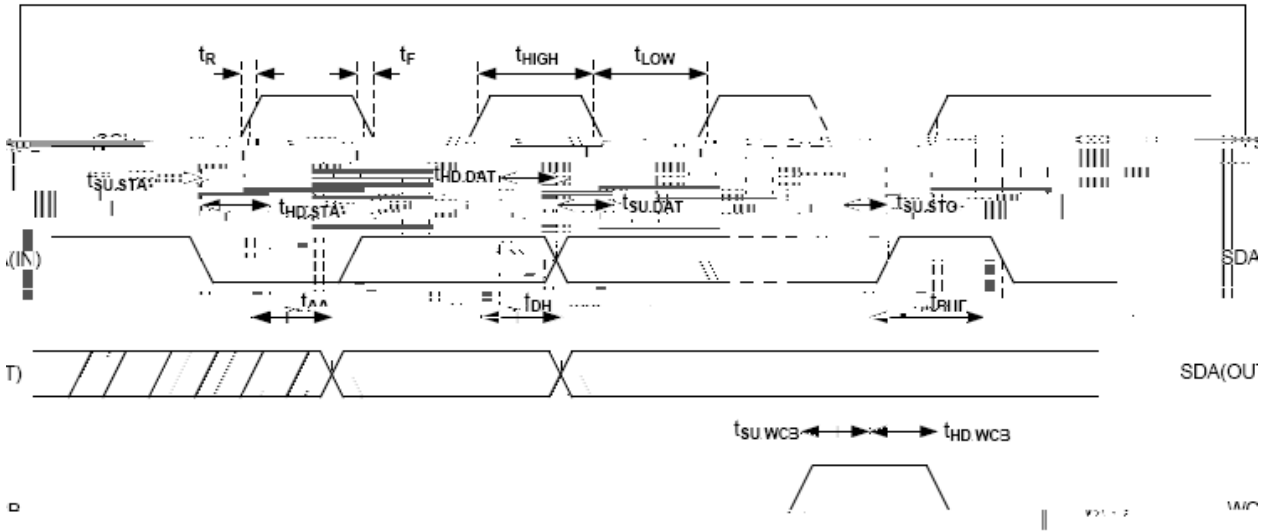
8: B



≠^i \ ((J \hI \ekXcl \X[

/ Time Sequence Diagram

Bus Timing



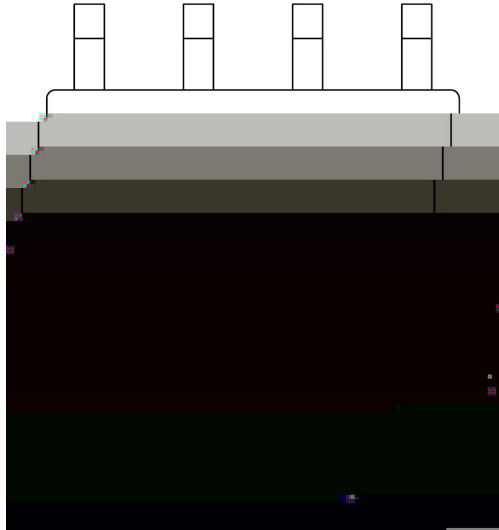
Write Cycle Timing



time t_{WR} is the time from a valid stop condition of a write sequence to the end of the internal clear/write cycle.

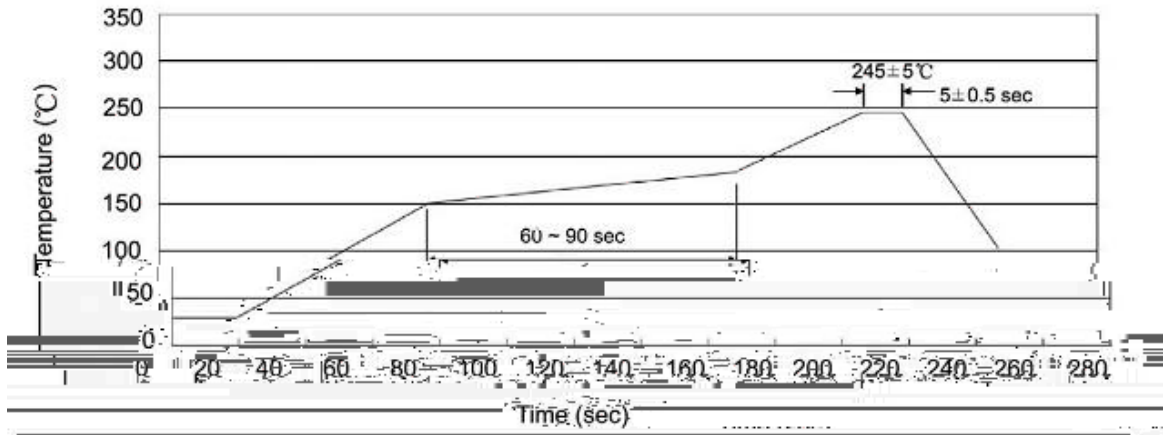
Note: The write-cycle t

/ Marking Instructions



)+:(-
!!!!

() / Temperature Profile for IR Reflow Soldering(Pb-Free)



... r o•T Đ\ `ĐÀ;Đ