

BRCM24C32SC

BRCM24C32SC SOP-8 32 Kbit I²C

1.7V	2.5~5.5V	1Mhz	1.7~2.5V
400Khz			
CMOS	400uA	1.6mA	

/ Pinning

Pin	Name	Type	Description
1	EO	Input	
2	E1	Input	
3	E2	Input	
4	GND	Ground	
5	SDA	I/O	/
6	SCL	Input	
7	WCB	Input	
8	VCC	Power	

/ Marking

/ Absolute Maximum Ratings(Ta=25)

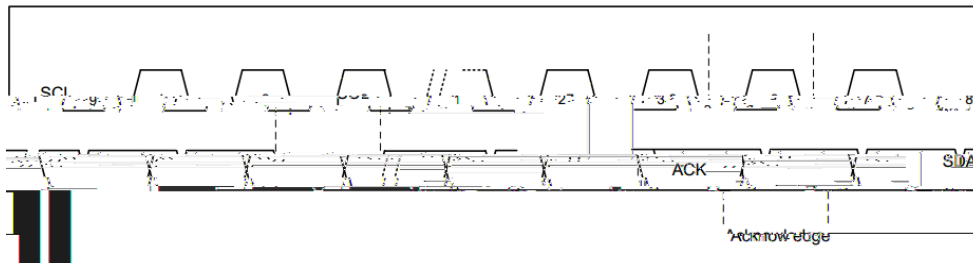
			mA
			V

/ Reliability Characteristic

BRCM24C32SC

--	--	--	--	--

/ Functional Description



/ Functional Description

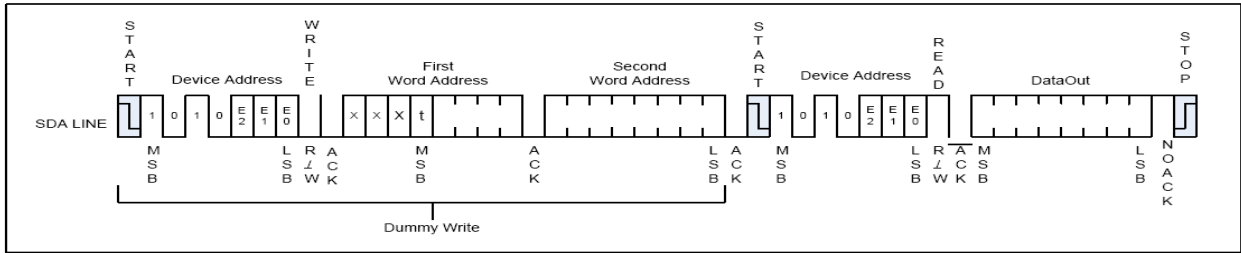
/ Acknowledge Polling

BRCM24C32SC

/

BRCM24C32SC

/ Functional Description



Notes: [1] x means don't care bits.

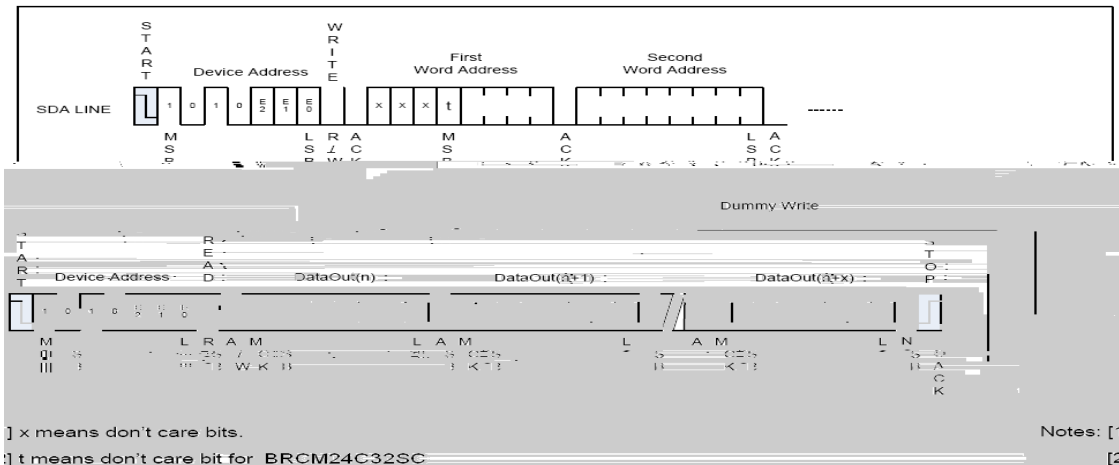
Figure 8 Random Address Read

/ Sequential Read

BRCM24C32SC

" 0"

9



[1] x means don't care bits.

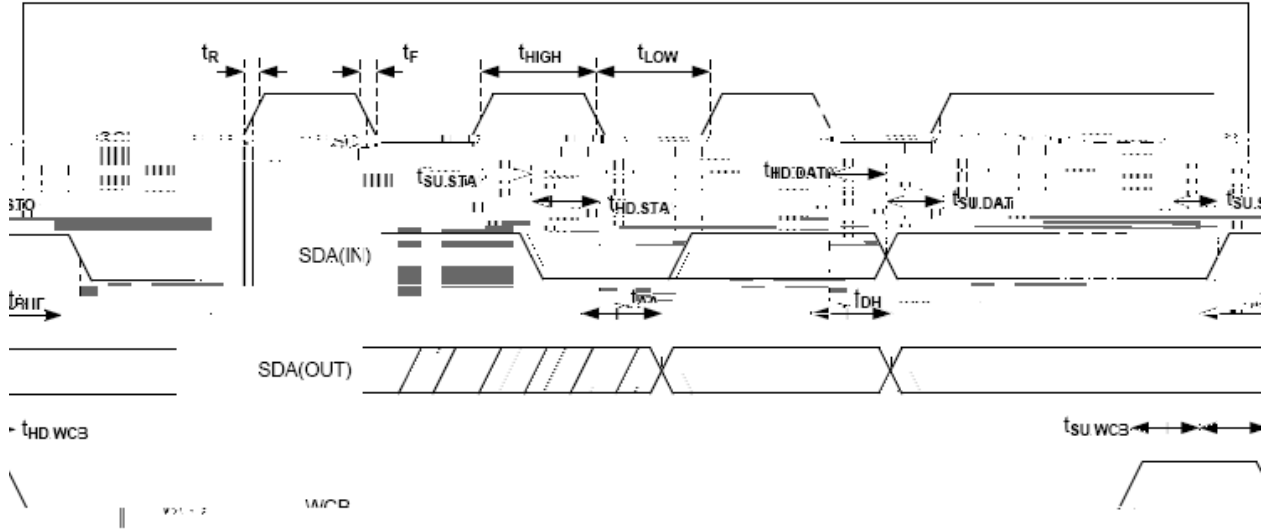
Notes: [1]

[1] t means don't care bit for BRCM24C32SC

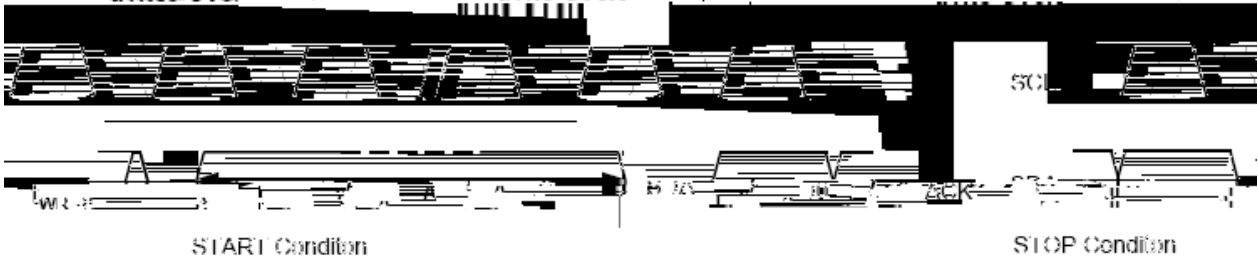
BRCM24C32SC

/ Time Sequence Diagram

Bus Timing



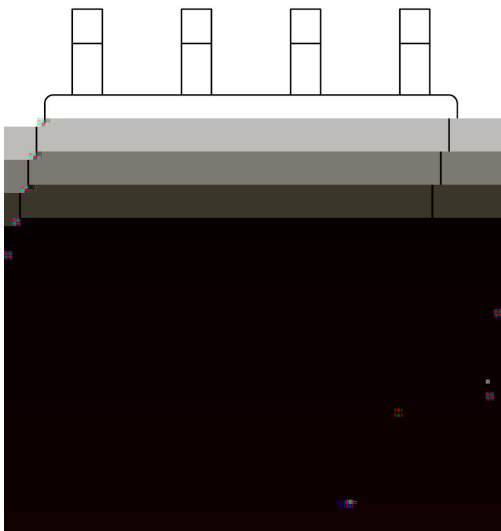
Write Cycle Timing



write sequence to the end of the internal clear/write cycle.

Note: The write cycle time t_{WR} is the time from a valid stop condition of a

/ Marking Instructions



24C32

BRCM24C32SC