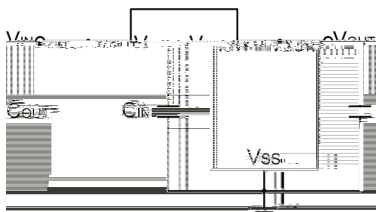


/ Descriptions

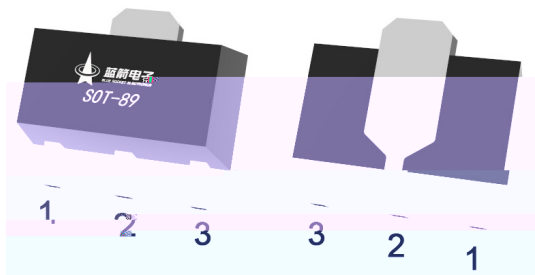
/ Features

/ Applications

/ Equivalent Circuit



/ Pinning

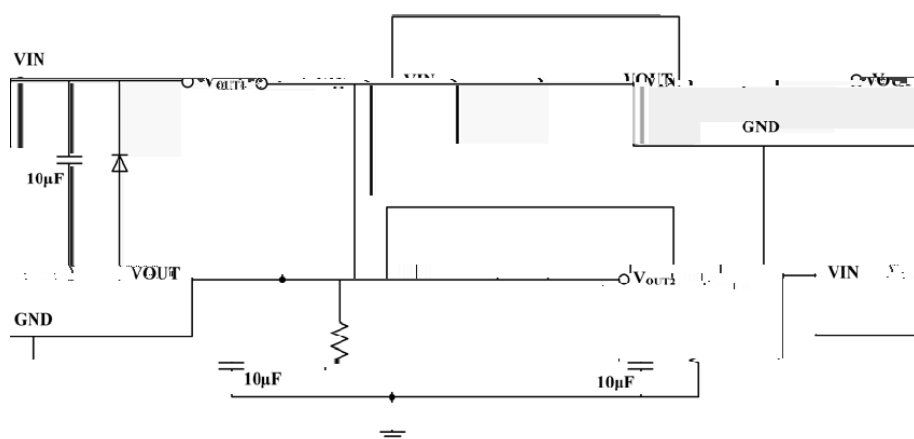
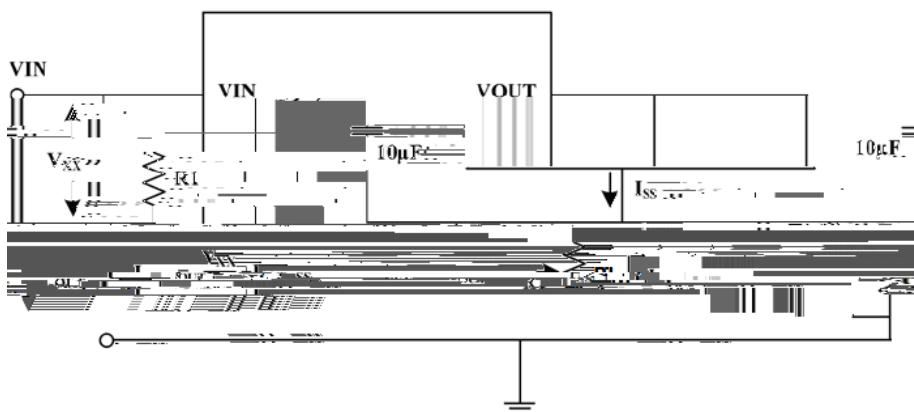
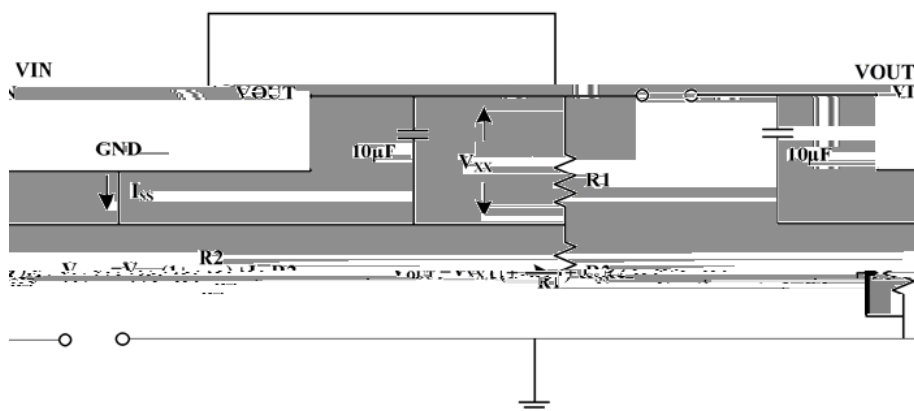


/ Marking

/ Electrical Characteristics($T_A=25$, $V_{IN}=V_{OUT}+1V$, $C_{IN}=C_{OUT}=1\mu F$, unless otherwise specified)

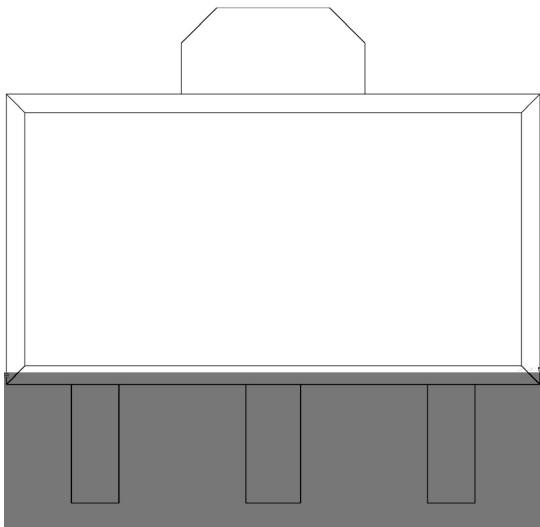
BRCO7350HT

/ Typical Application Circuit



BRCO7350HT

/ Marking Instructions



() / Temperature Profile for IR Reflow Soldering(Pb-Free)

/ Resistance to Soldering Heat Test Conditions

/ Packaging SPEC.

--	--	--