

Rev.A Jan.-2022





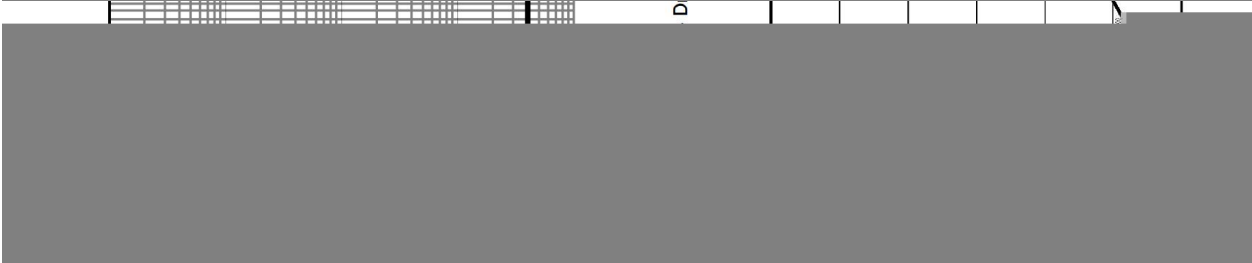
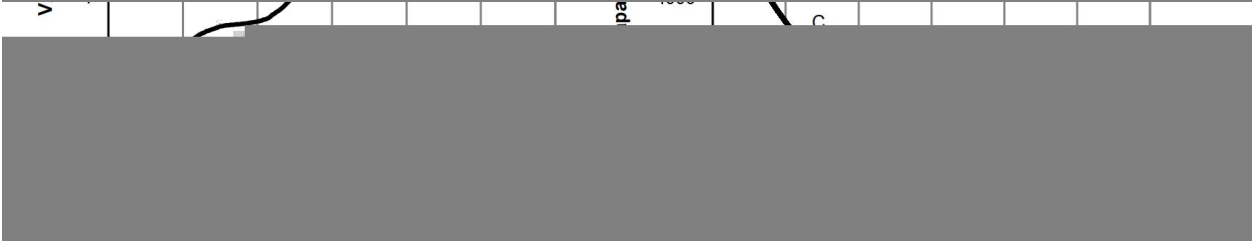
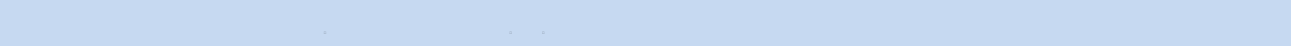
Rev.A Jan.-2022

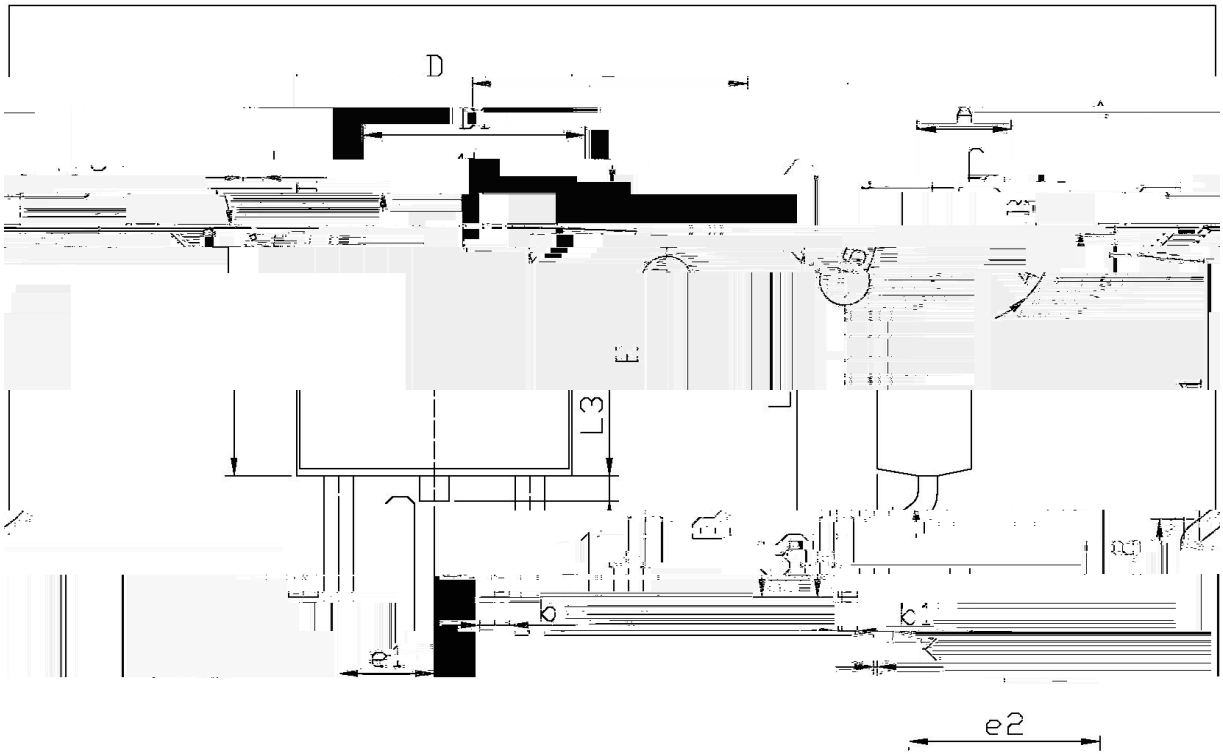
TO-252 N
N-CHANNEL MOSFET in a TO-252

Rev.A



Parameter	Symbol	Test Conditions	Min	Typ	Max	Unit
Turn-On Delay Time	$t_{d(on)}$	$V_{GS}=10V$ $V_{DS}=15V$ $R_L=0.75\ \Omega$ $R_{GEN}=3\ \Omega$		12.5		ns
Turn-On Rise Time	t_r			6.0		
Turn-Off Delay Time	$t_{d(off)}$			47		
Turn-Off Fall Time	t_f			10.5		

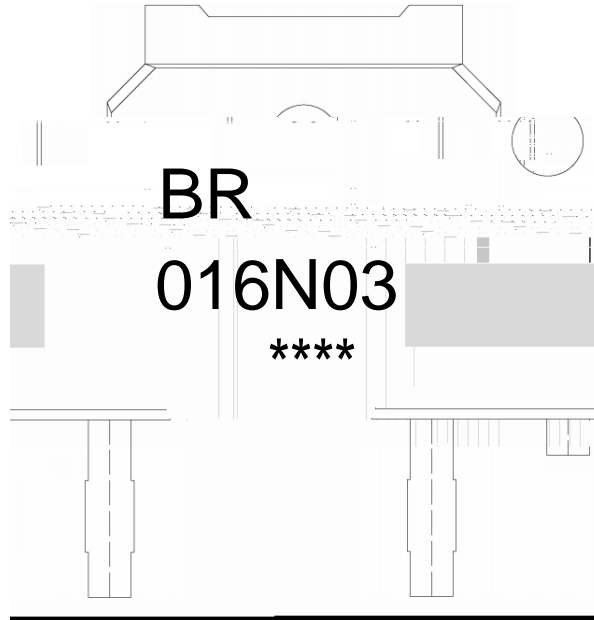




1/2: mm

Max	Syn300	Min	Max	Syn300	Min
1.25	e1	2.24	2.34	B	0.95
0.45	0.55	0.65	0.85	0.35	0.70
0.45	0.45	0.60	0.90	0.30	0.60
6.75	1.3	0.60	0.90	0.30	0.60
5.50	0.40	0.40	0.40	0.40	0.40

PT-252



BR

016N03

Note:

BR: Company Code

016N03: Product Type Code.

****: Lot No. Code, code change with Lot No.



Temperature Profile for IR Reflow Soldering(Pb-Free)

Note:

- | | | | |
|---|-----------|-------------|---|
| 1 | 150 ~ 180 | 60 ~ 90sec; | 1.Preheating:150~180 , Time:60~90sec. |
| 2 | 245±5 | 5±0.5sec; | 2.Peak Temp.:245±5 , Duration:5±0.5sec. |
| 3 | 2 ~ 10 | /sec. | 3. Cooling Speed: 2~10 /sec. |

260±5	10±1 sec.	Temp.:260±5℃	Time:10±1 sec
-------	-----------	--------------	---------------