

5 Ø / Descriptions

.> / / x ?œ 3 « | o

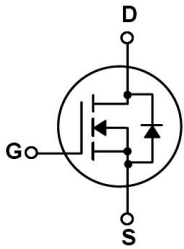
/ " / Features

8* 9 u4 k y > z k) x y4 k ... , %œ k)í D }o

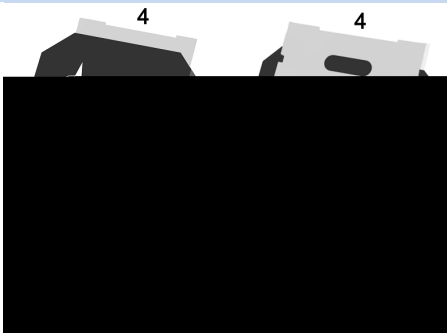
— ÷ / Applications

9 z 9 t ò y V æ tœ *) *) ô Eo ' D } ä | ô Eo

^ W] Ô• / Equivalent Circuit



Û- æ / Pinning



y

y

y

y

, M V / Marking

- ~ " ¢o

1. Absolute Maximum Ratings(Ta=25 ;)

Symbol		Unit	Value
V _{GS}	Max	V	3.0
	Min	V	-0.5
V _{DS}	Max	V	3.0
	Min	V	0
I _{DS}	Max	A	0.5
	Min	A	0
I _{DM}	Max	A	0.5
	Min	A	0
I _{RM}	Max	A	0.5
	Min	A	0
f _{sw}	Max	kHz	10
	Min	kHz	0
Q _g	Max	nC	10
	Min	nC	0
Q _{rr}	Max	nC	10
	Min	nC	0
t _{rr}	Max	ns	10
	Min	ns	0
t _{on}	Max	ns	10
	Min	ns	0

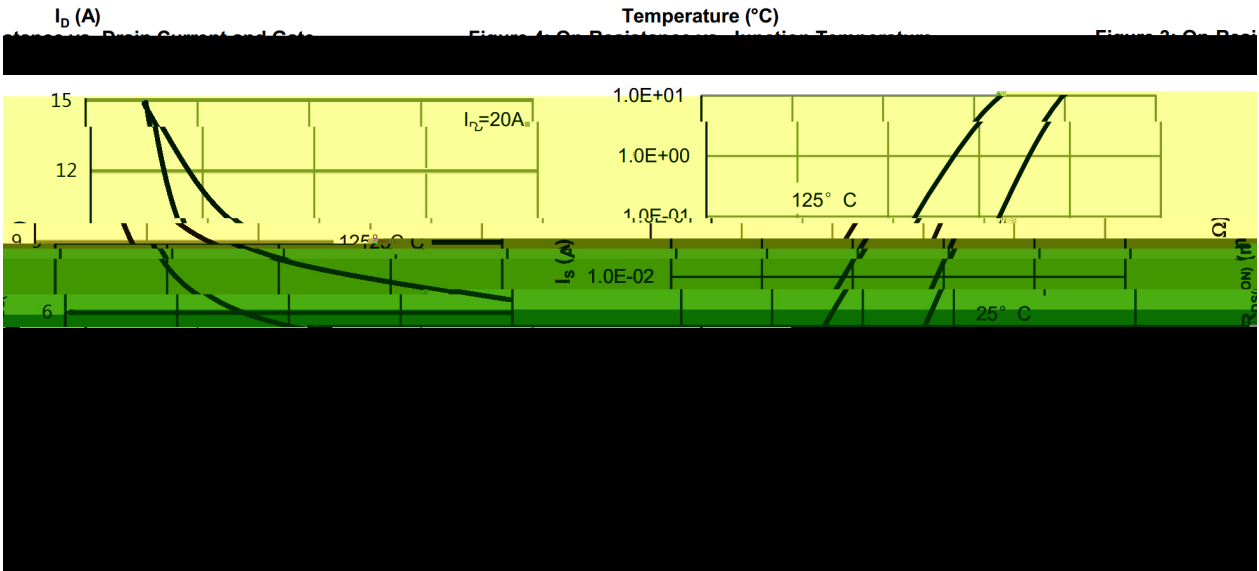
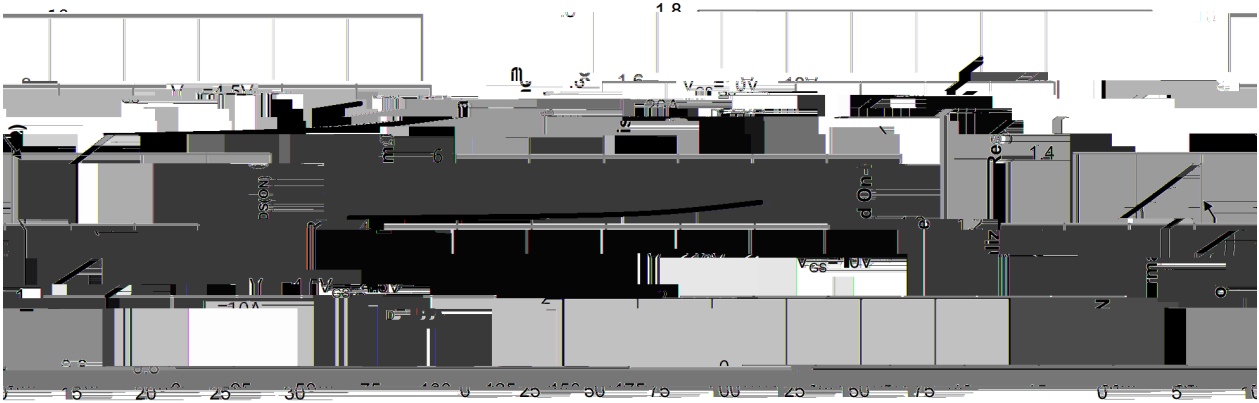
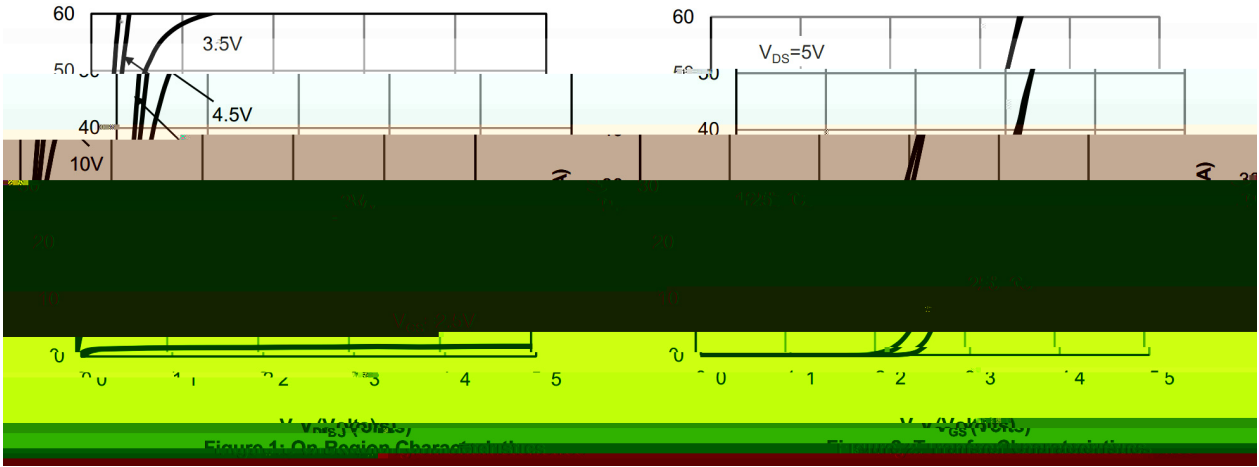
2. Electrical Characteristics(Ta=25 ;)

Symbol	Unit	Value	Test Condition
V _{GS(th)}	Max	V	V _{DS} =0, I _{DS} =0
	Min	V	V _{DS} =0, I _{DS} =0
V _{GS(on)}	Max	V	V _{DS} =0, I _{DS} =0
	Min	V	V _{DS} =0, I _{DS} =0
V _{GS(off)}	Max	V	V _{DS} =0, I _{DS} =0
	Min	V	V _{DS} =0, I _{DS} =0
V _{GS(10V)}	Max	V	V _{DS} =0, I _{DS} =0
	Min	V	V _{DS} =0, I _{DS} =0
V _{GS(100V)}	Max	V	V _{DS} =0, I _{DS} =0
	Min	V	V _{DS} =0, I _{DS} =0
V _{GS(1000V)}	Max	V	V _{DS} =0, I _{DS} =0
	Min	V	V _{DS} =0, I _{DS} =0
V _{GS(10000V)}	Max	V	V _{DS} =0, I _{DS} =0
	Min	V	V _{DS} =0, I _{DS} =0
V _{GS(100000V)}	Max	V	V _{DS} =0, I _{DS} =0
	Min	V	V _{DS} =0, I _{DS} =0
V _{GS(1000000V)}	Max	V	V _{DS} =0, I _{DS} =0
	Min	V	V _{DS} =0, I _{DS} =0

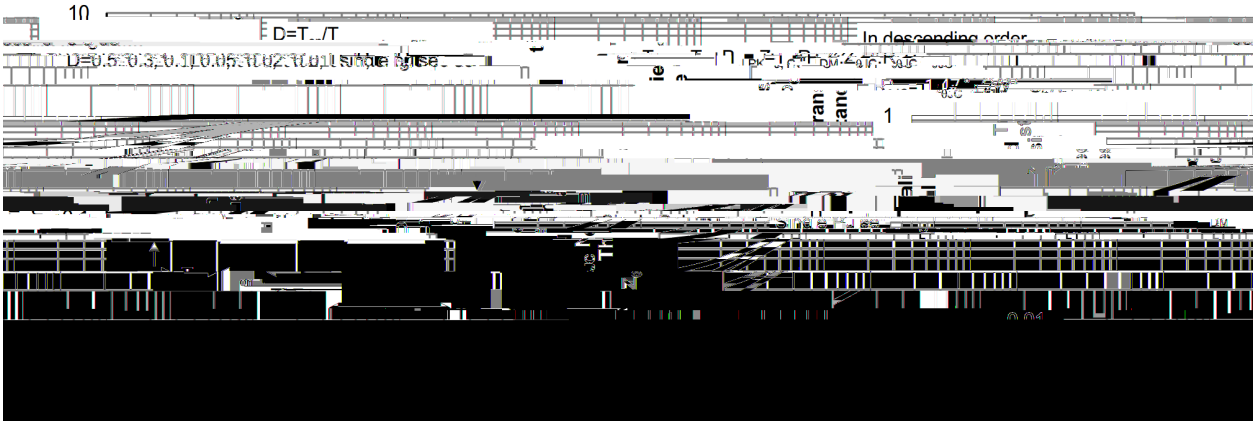
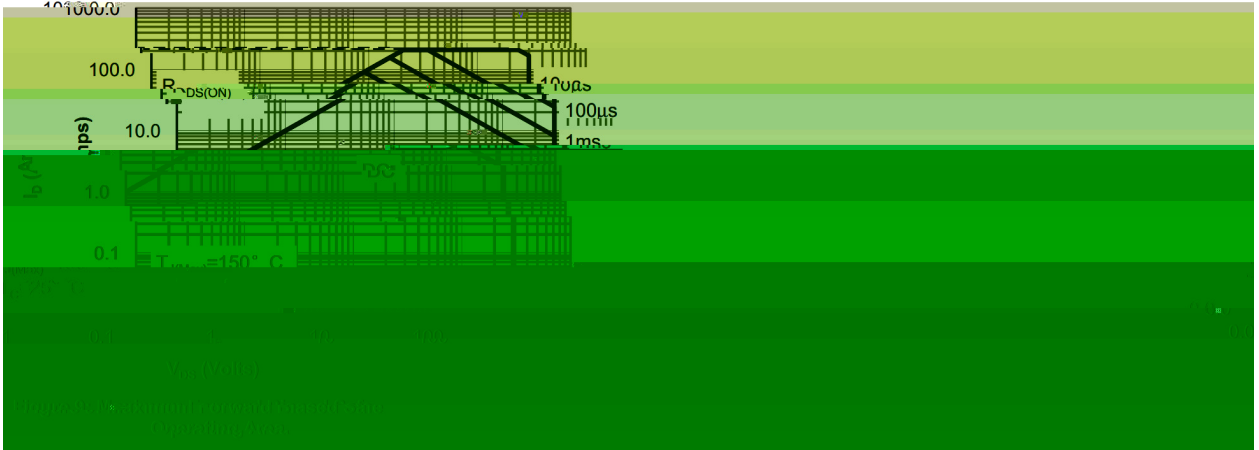
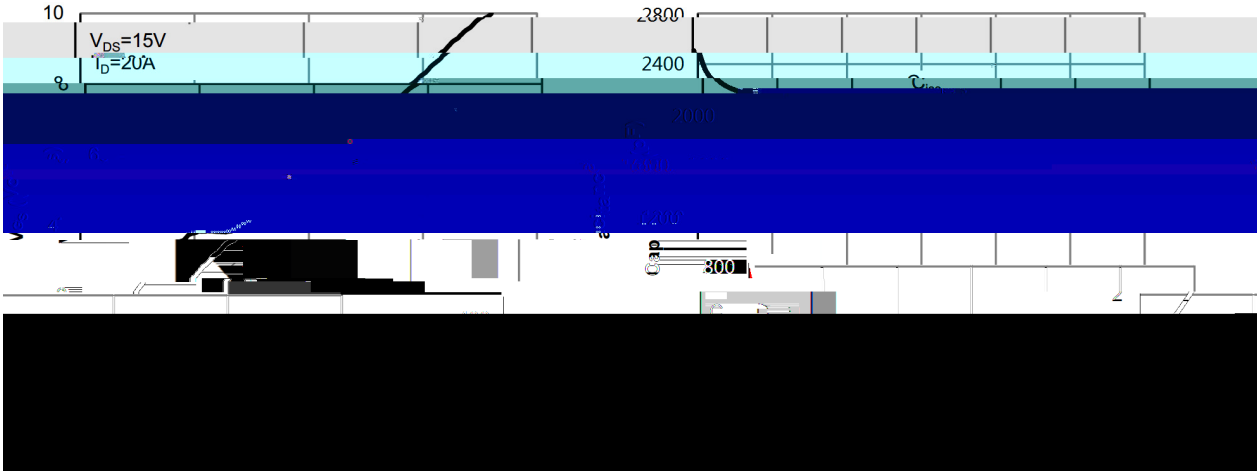
Electrical Characteristics (Ta=25 °C)

Symbol	Unit	Parameter	Min	Typ	Max	%

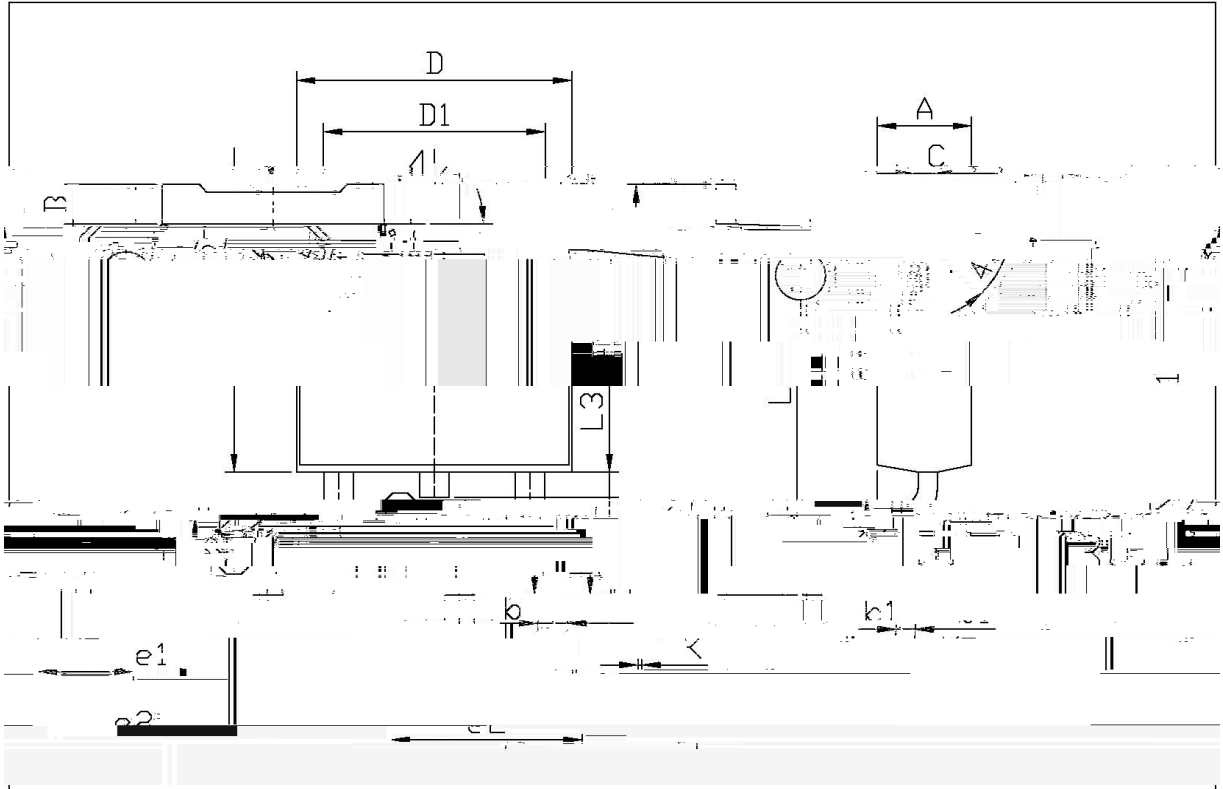
Electrical Characteristic Curve



Electrical Characteristic Curve



Ø/) ☉ / Package Dimensions

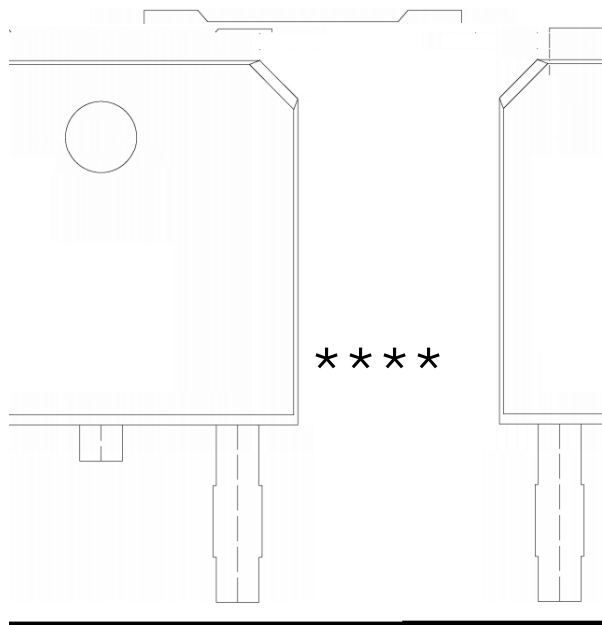


单位: mm

Dimensions	Millimeters		Inches	
	Min	Max	Min	Max
B	0.95	1.25	0.037	0.049
e1	2.24	2.54	0.088	0.100
b	0.30	0.60	0.012	0.024
b1	0.45	0.55	0.018	0.022
k	0.45	0.55	0.018	0.022
L3	0.60	0.90	0.024	0.035
CL	0.10	0.10	0.004	0.004
k1	5.10	5.50	0.201	0.217

T0-252

, M y / Marking Instructions



" ¢ y
y , [W A
y " Z W A
y ŷD Z W A k ŷD Z J

BRCS050N03DP