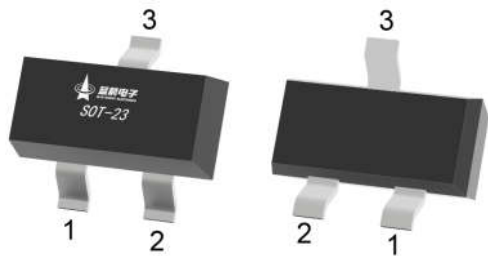


Rev. B Jun.-2022

SOT-23 MOS
P- CHANNEL MOSFET in a SOT-23 Plastic Package.

MOSFET
Trench Power MOSFET technology, Low $R_{DS(ON)}$, Low Gate Charge, HF Product.

Primarily the display screen drive applications.

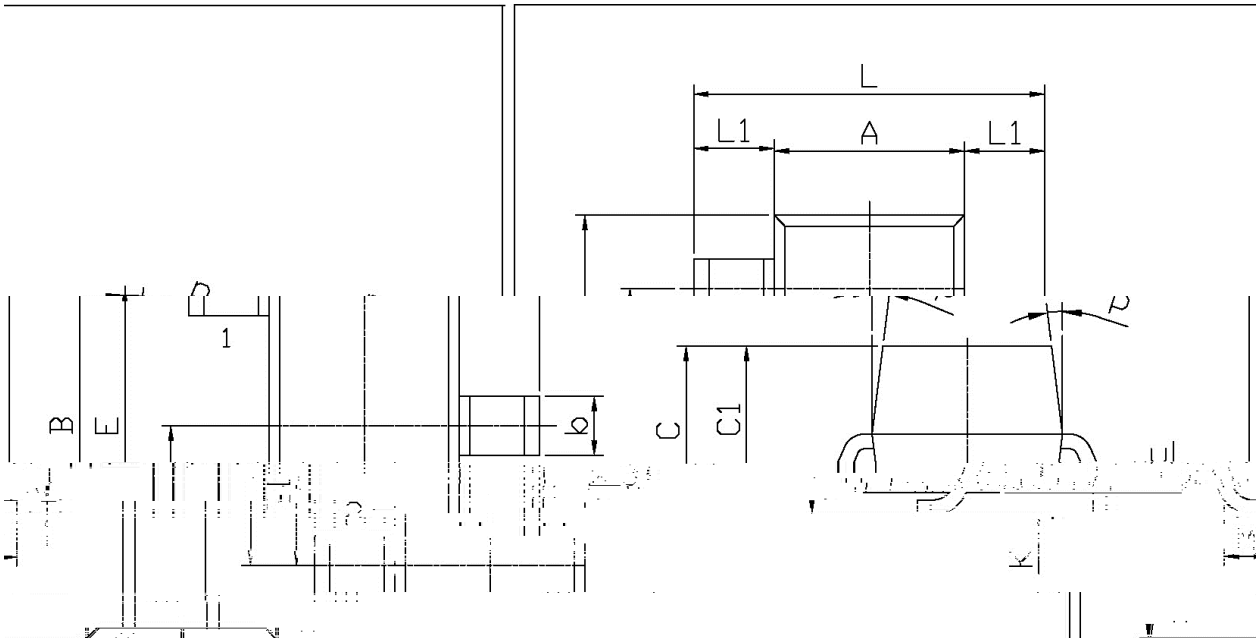


PIN1 G PIN 2 S PIN 3 D

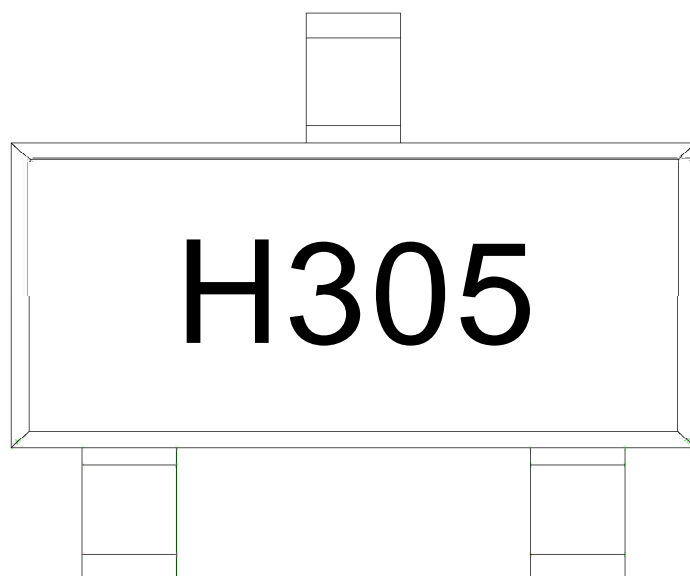
Rev. B Jun.-2022

Parameter	Symbol	Test Conditions	Min	- μ ĩ
				Typ

尺寸标注及公差 (Dimensioning and Tolerances)



Dimensions, In Millimeters		Tolerances, In Millimeters	
C	1.30Max	L	2.2 2.7
C1	0.90 1.20	L1	0.45 0.65
E	0.05 0.20	A	1.15 1.50
b	0 0.15	R	0.70 0.80
K		0.05 0.10	
R		0.35 0.55	



H:

305:

Note:

H: Company Code.

305 Product Type

Temperature Profile for IR Reflow Soldering(Pb-Free)

Note:

- | | | | |
|---|---------|-----------|---|
| 1 | 150 180 | 60 90sec; | 1.Preheating:150~180 , Time:60~90sec. |
| 2 | 245 5 | 5 0.5sec; | 2.Peak Temp.:245 5 , Duration:5 0.5sec. |
| 3 | 2 10 | /sec. | 3. Cooling Speed: 2~10 /sec. |

260 5 10 1 sec. Temp.:260 5 Time:10 1 sec

/ REEL

Package Type	Units Units/Re	Units	Dimension (unit mm ³)
--------------	-------------------	-------	--------------------------------------