

/ Descriptions

SOP-8 N MOS N-Channel in a SOP-8 Plastic Package.

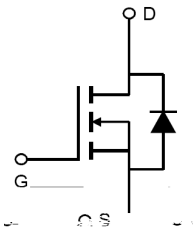
/ Features

$R_{DS(ON)}$ RoHS
Low $R_{DS(ON)}$, Low Gate Charge, Optimized for fast-switching, RoHS and Halogen-Free Compliant.

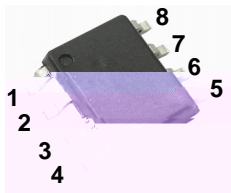
/ Applications

DC/DC AC/DC /
Synchronous Rectification in DC/DC and AC/DC Converters, Isolated DC/DC Converters in Telecom and Industrial.

/ Equivalent Circuit



/ Pinning



PIN1:S PIN 2:S PIN 3 S PIN 4 G
PIN5 PIN 6 PIN 7 PIN 8:D

/ h_{FE} Classifications & Marking

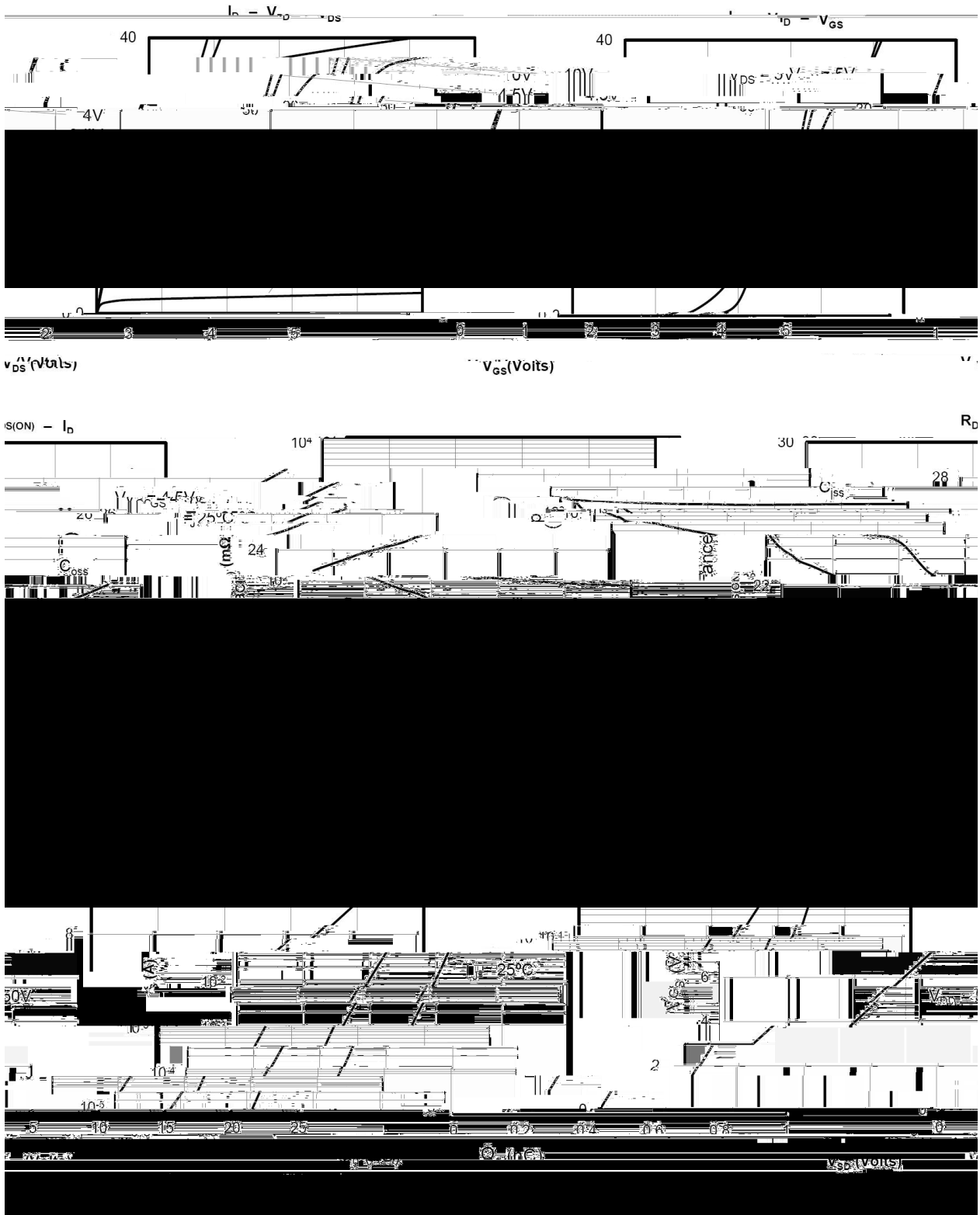
See Marking Instructions.

BRCS4292SC

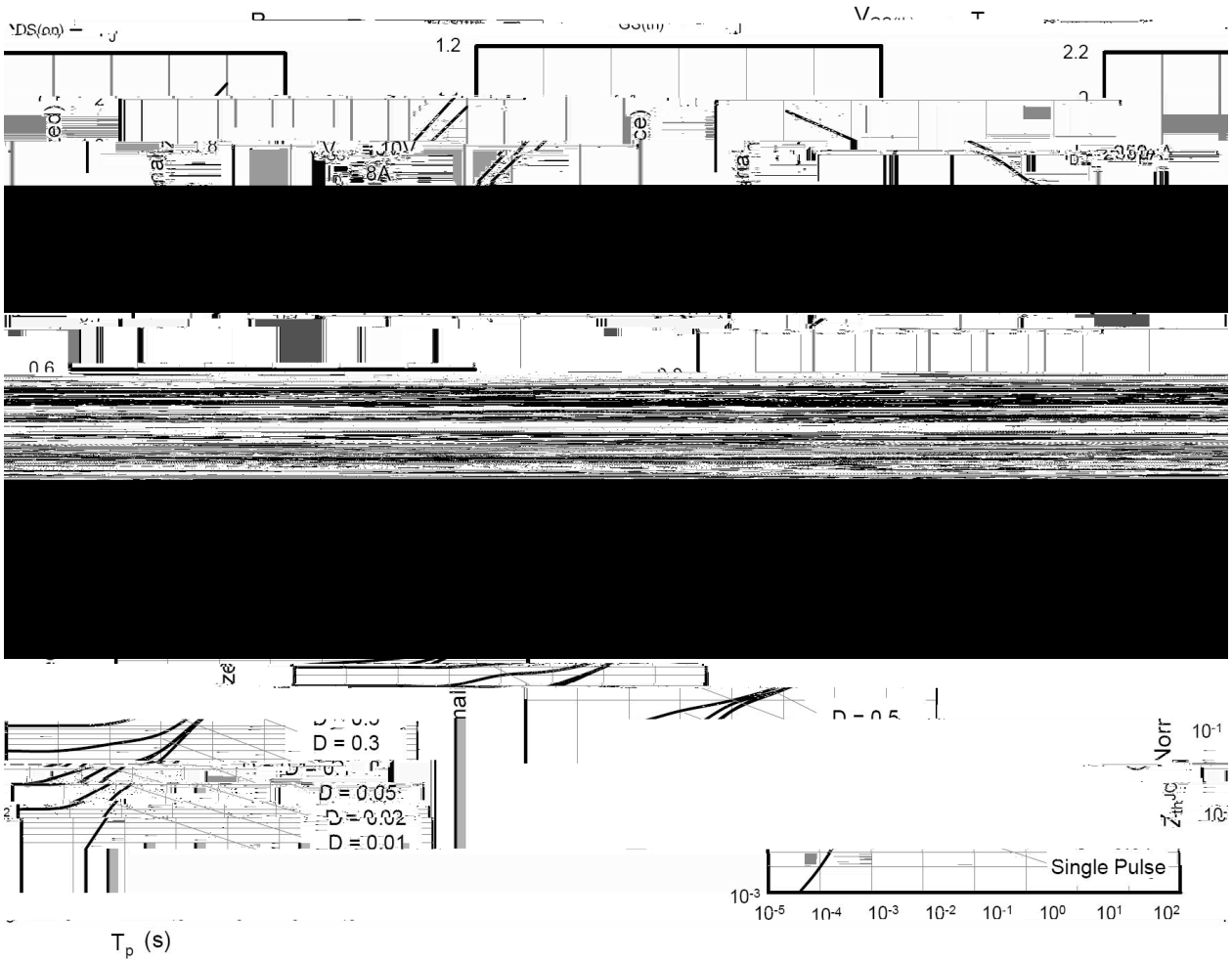
/ Electrical Characteristics(Ta=25)

| Parameter | Symbol | Test Conditions | Min |
|-----------|--------|-----------------|-----|
|-----------|--------|-----------------|-----|

/ Electrical Characteristic Curve



/ Electrical Characteristic Curve



/ Test Circuit & Waveform

Figure A: Gate Charge Test Circuit and Waveform...

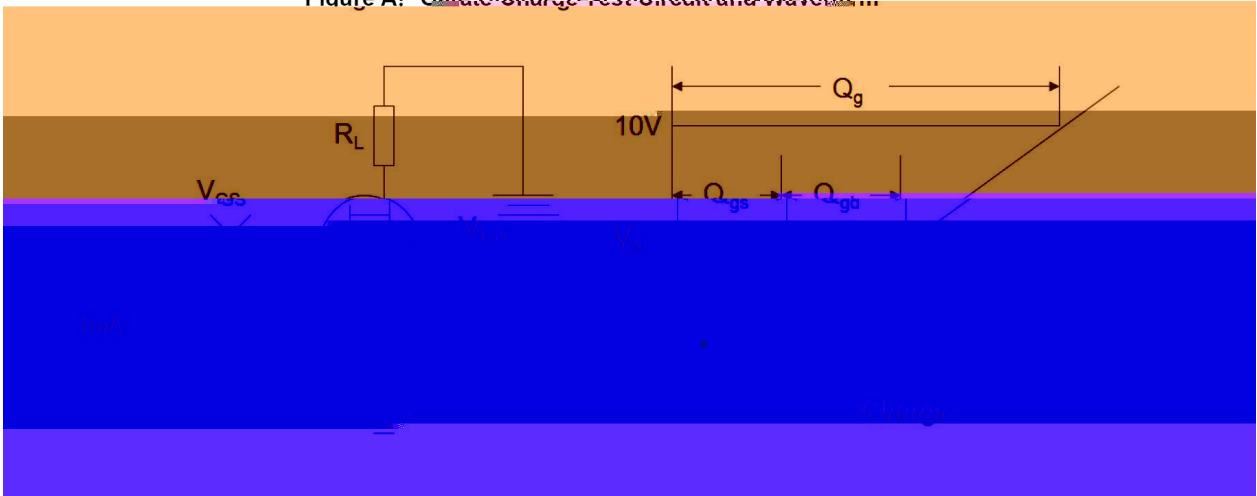


Figure B: Resistive Switching Test Circuit and Waveform

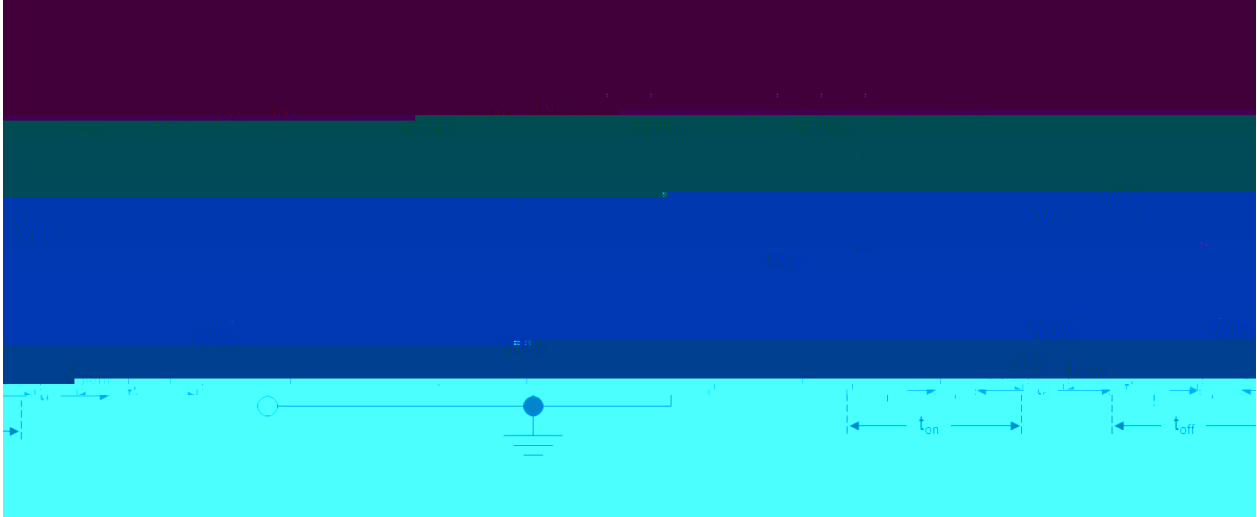
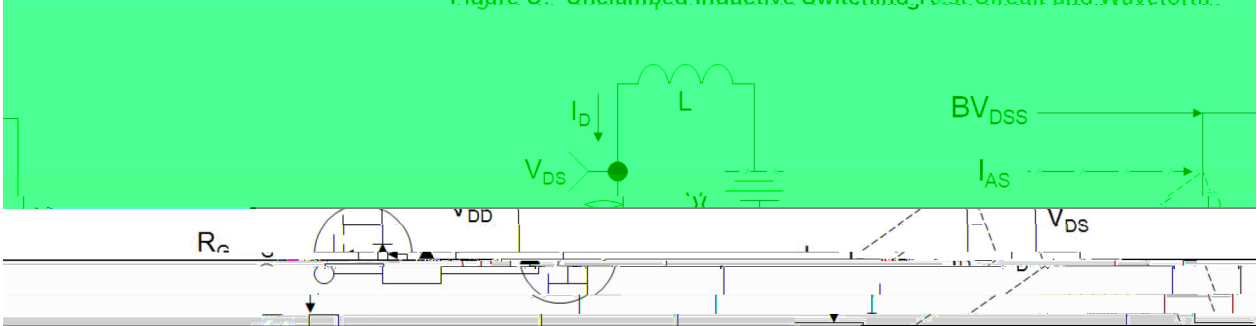
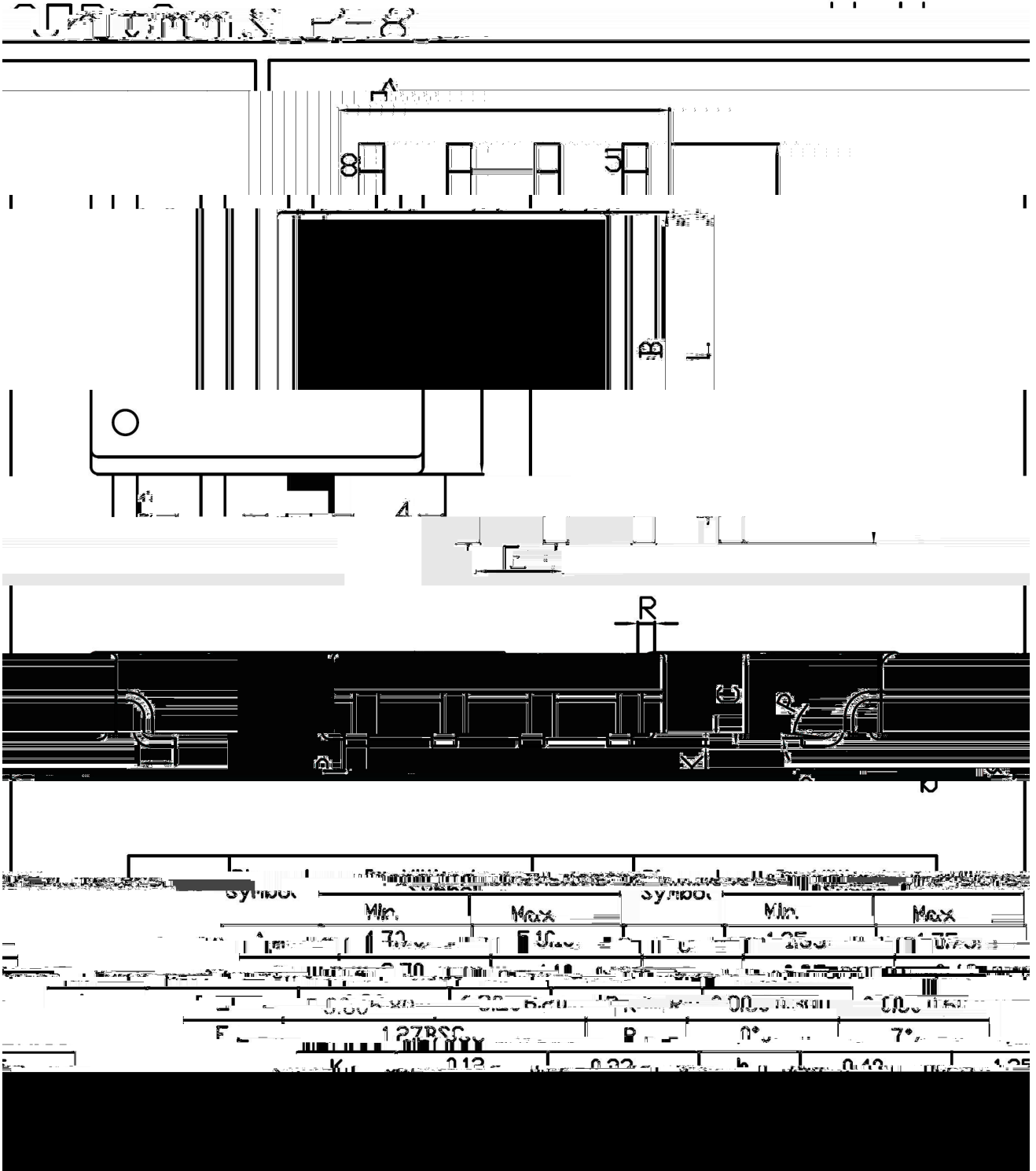


Figure C: Inductive Switching Test Circuit and Resonant HW waveform

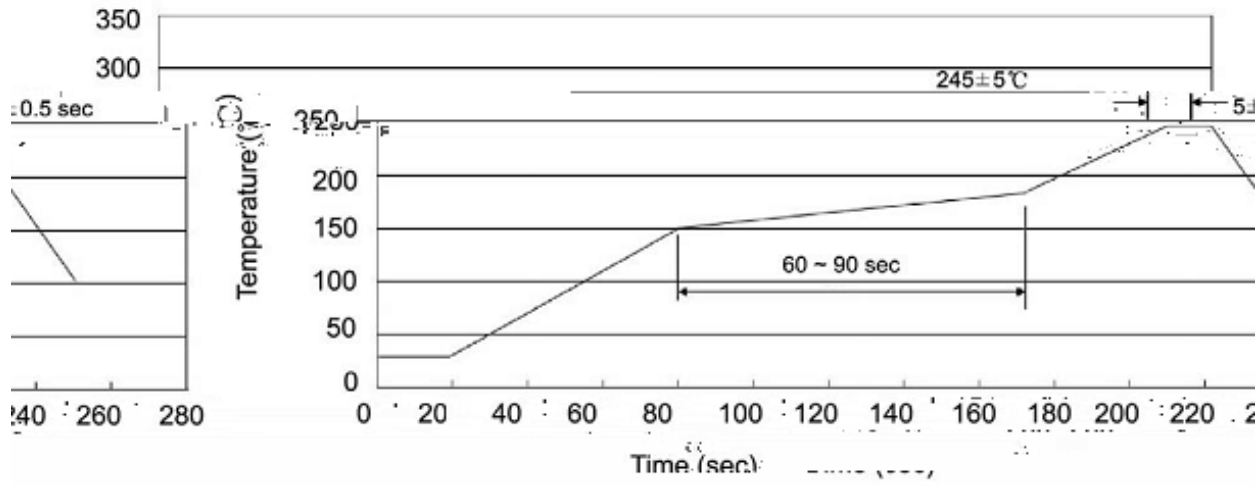


/ Package Dimensions



BRCS4292SC
Rev.E Oct.-2018

() / Temperature Profile for IR Reflow Soldering(Pb-Free)



Note:

- | | | | | | |
|---|-------|-----|----|-----------|---|
| 1 | 150 | 180 | 60 | 90sec; | 1.Preheating:150~180 , Time:60~90sec. |
| 2 | 245±5 | | | 5±0.5sec; | 2.Peak Temp.:245±5 , Duration:5±0.5sec. |
| 3 | | | 2 | 10 /sec. | 3. Cooling Sp.7(T)10744000874068a93960t30 T4 02 0 TD0 |
- 260±5 10±1 sec.

/ Packaging SPEC.

/ REEL