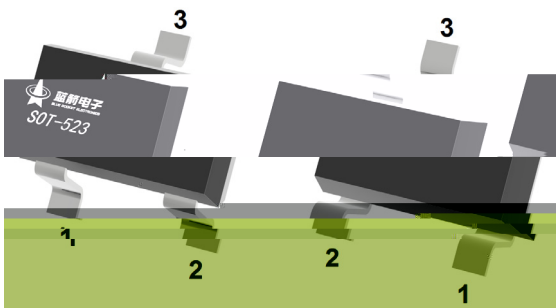
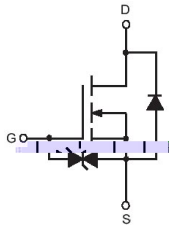


SOT-523 N MOS  
N-CHANNEL MOSFET in a SOT-523 Plastic Package.

2KV

Sensitive gate trigger current and Low Holding current.ESD protected up to 2KV,HF Product.

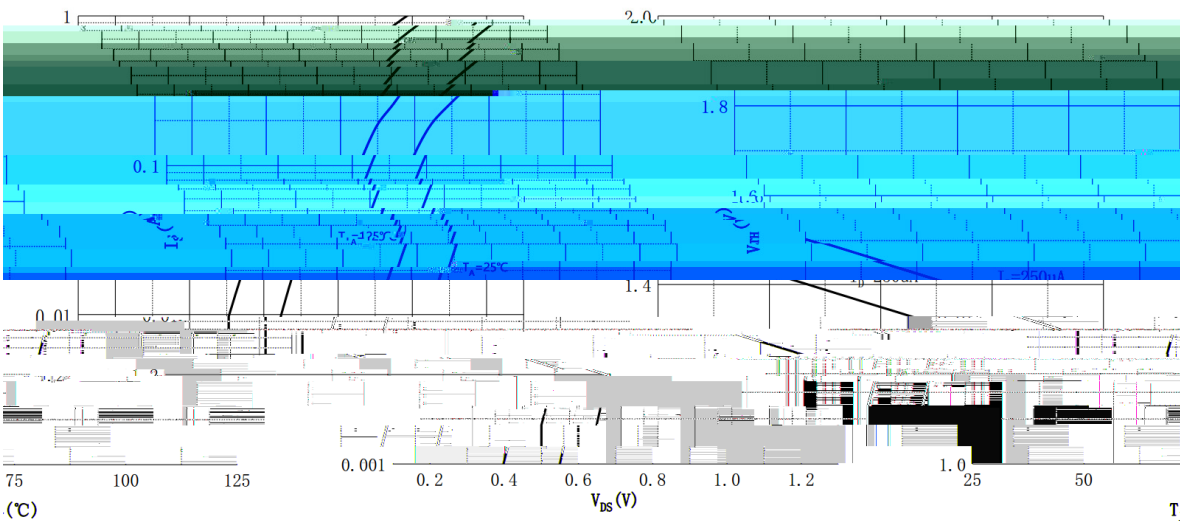
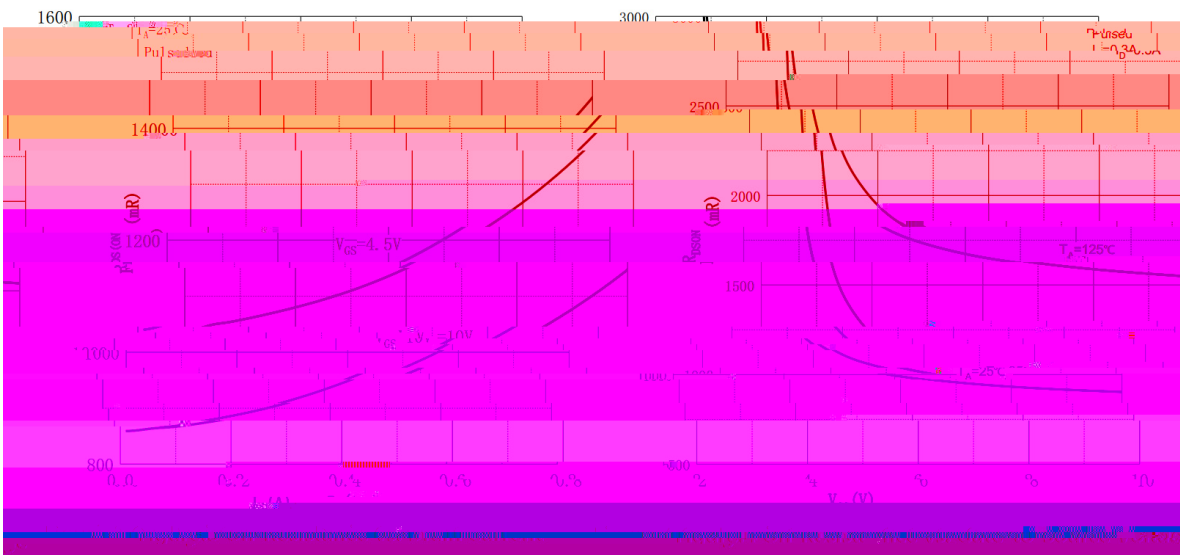
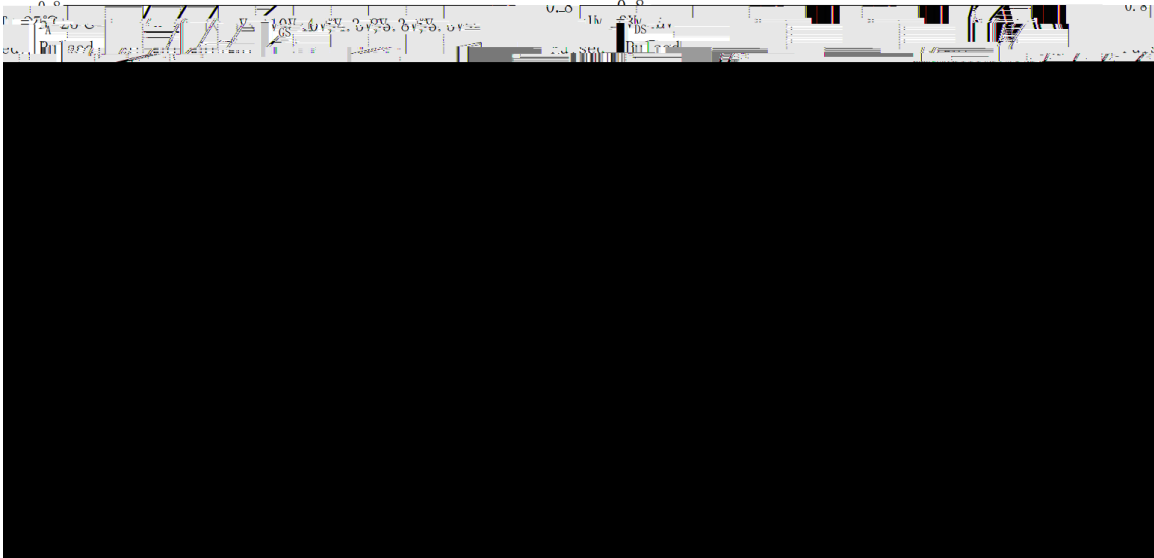
Intended for use in general purpose switching and phase control applications.

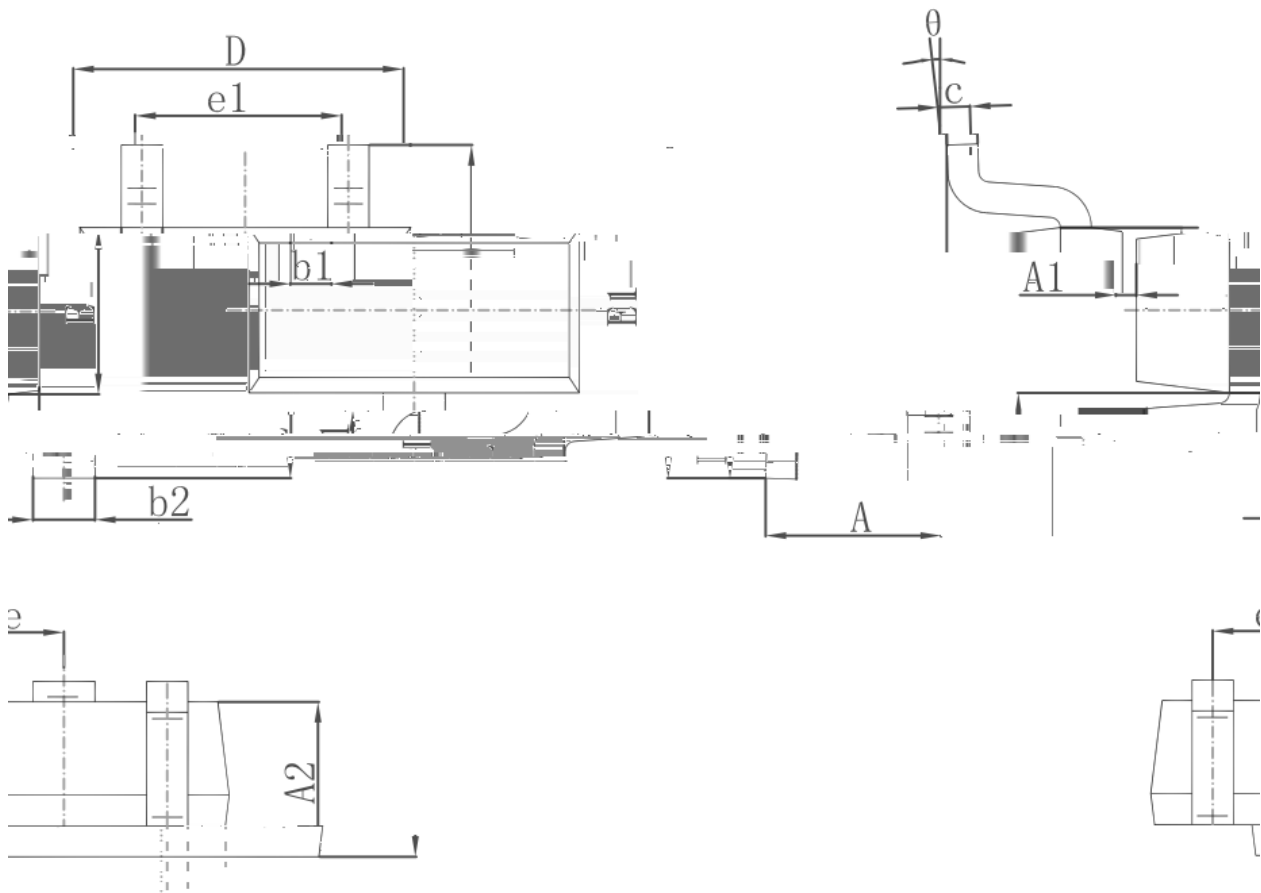


PIN 1 G      PIN 2 S      PIN 3 D

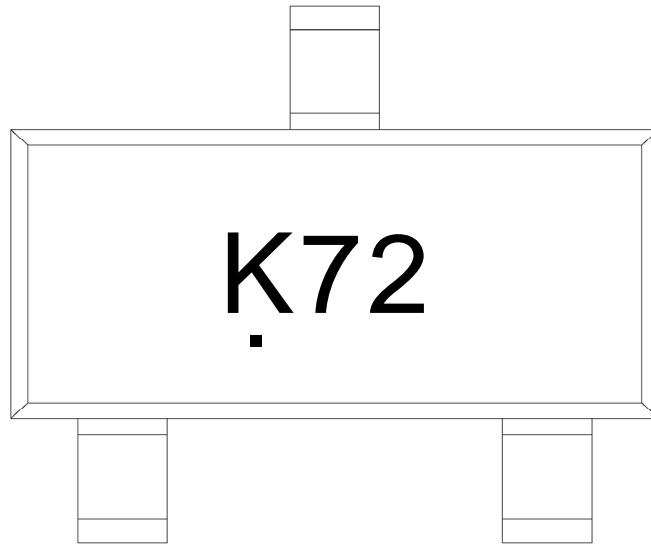
Marking	K72
---------	-----







Symbol	Dimensions In Millimeters		Dimensions In Inches	
	Min.	Max.	Min.	Max.
A	0.700	0.900	0.028	0.035
A1	0.700	0.800	0.028	0.031
A2	0.700	0.900	0.028	0.035
b1	0.700	0.900	0.028	0.035
b2	0.700	0.900	0.028	0.035
c	0.100	0.200	0.004	0.008
D	1.450	1.750	0.057	0.069
e1	0.900	1.100	0.035	0.043
L	0.400 REF.		0.016" REF.	
L1	0.260	0.460	0.010	0.018
$\theta$	0°	8°	0°	8°



K72

.

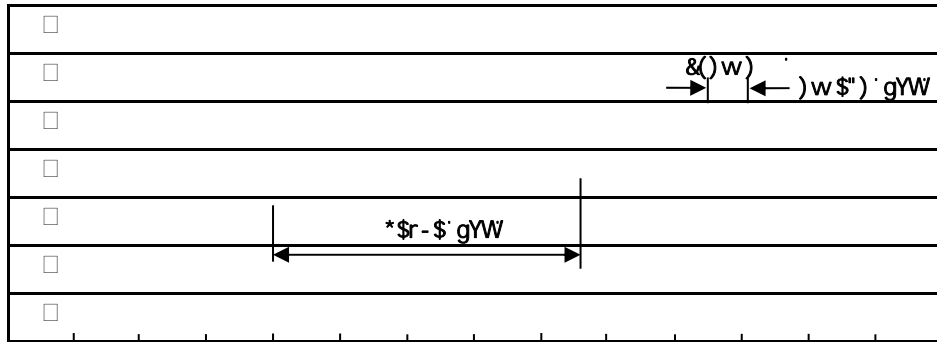
Note:

K72: Product Type Code

.

HF Product Code

### Temperature Profile for IR Reflow Soldering(Pb-Free)




\$ ..... &\$ ..... (\$ ..... \*\$ ..... , \$ ..... %\$ ..... %\$ ..... %(\$ ..... %\$ ..... %\$ ..... %\$ ..... &\$ ..... &\$ ..... &(\$ ..... &\$ ..... & \$ ..... \$ ..... a

#### Note:

- |   |       |     |       |        |  |
|---|-------|-----|-------|--------|--|
| 1 | 150   | 180 | 60    | 90sec; | 1.Preheating:150~180 °C , Time:60~90sec.   |
| 2 | 245±5 |     | 5±0.5 | sec;   | 2.Peak Temp.:245±5 °C , Duration:5±0.5sec. |
| 3 |       | 2   | 10    | /sec.  | 3. Cooling Speed: 2~10 °C/sec.             |

260±5

10±1 sec.

Temp.:260±5

Time:10±1 sec

/ REEL

Package Type	Units					Dimension (unit mm <sup>3</sup> )		
SOT-523	3,000	10	30,000	6	180,000	7 x8	180x120x180	390x385x205