

/ Descriptions

40V

5.0A

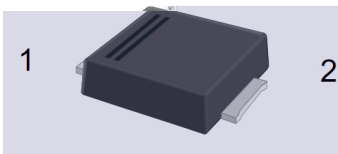
/ Features

/ Applications

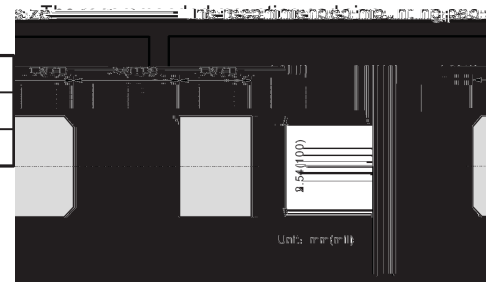
/ Equivalent Circuit



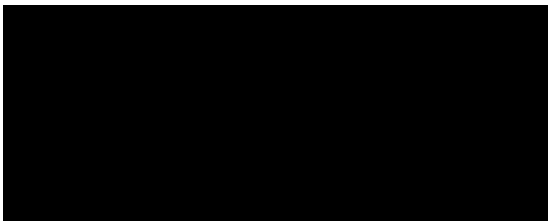
/ Pinning



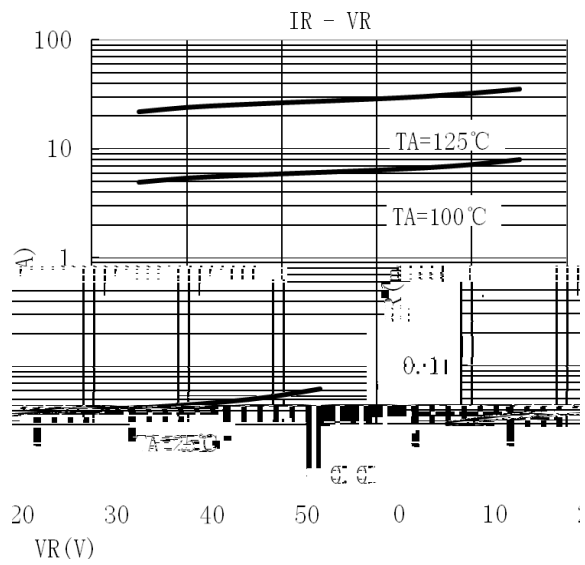
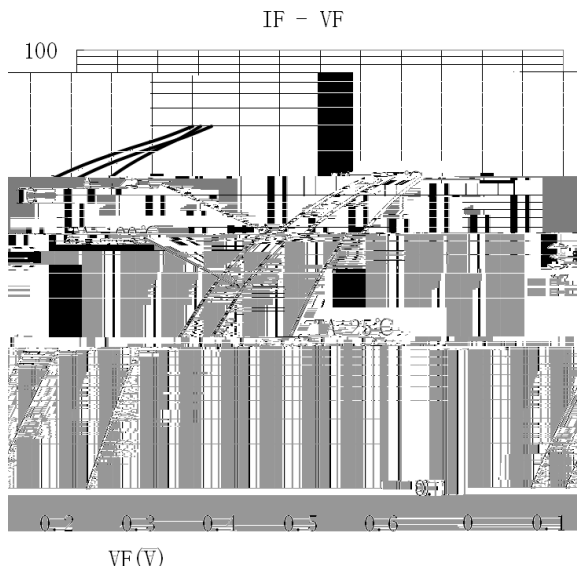
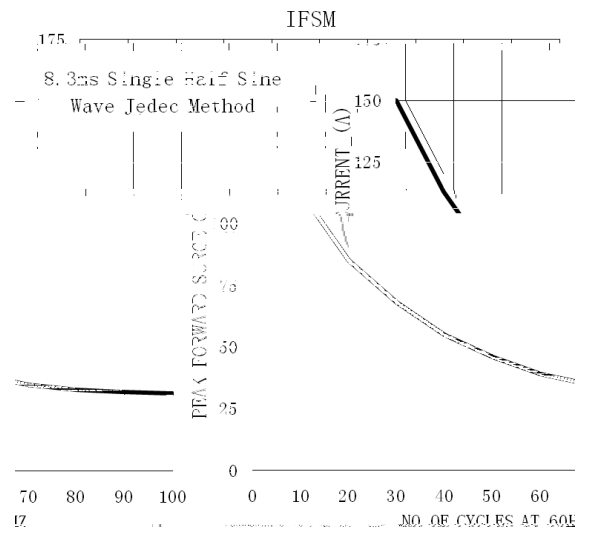
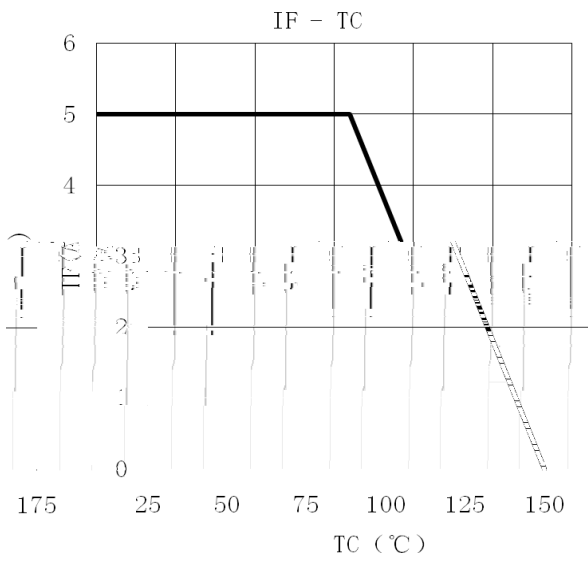
PIN	DESCRIPTION
1	Cathode
2	Anode



/ Marking

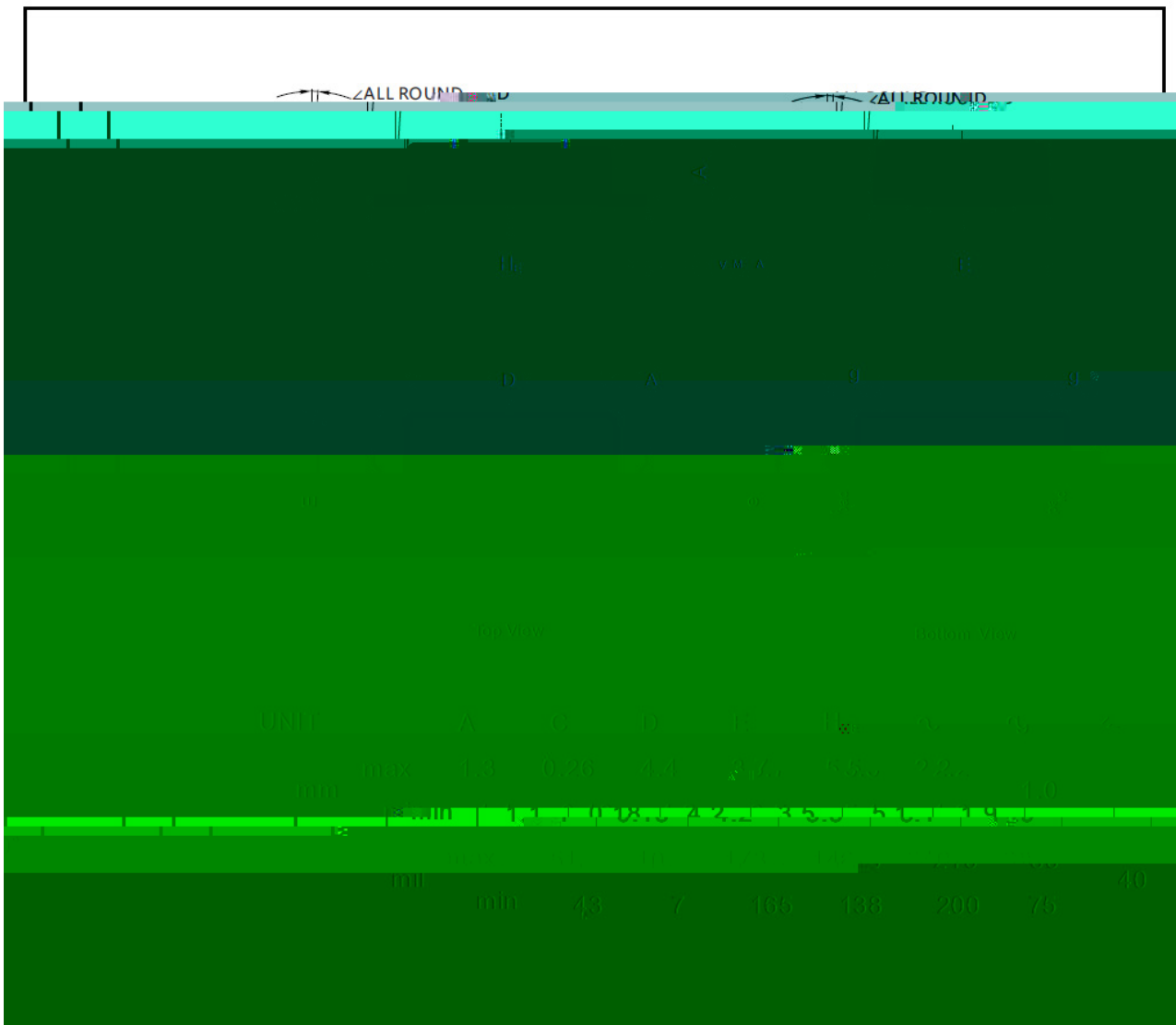


/ Electrical Characteristic Curve

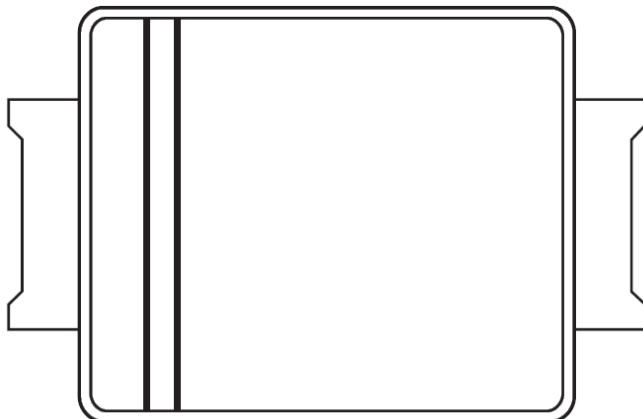


/ Package Dimensions

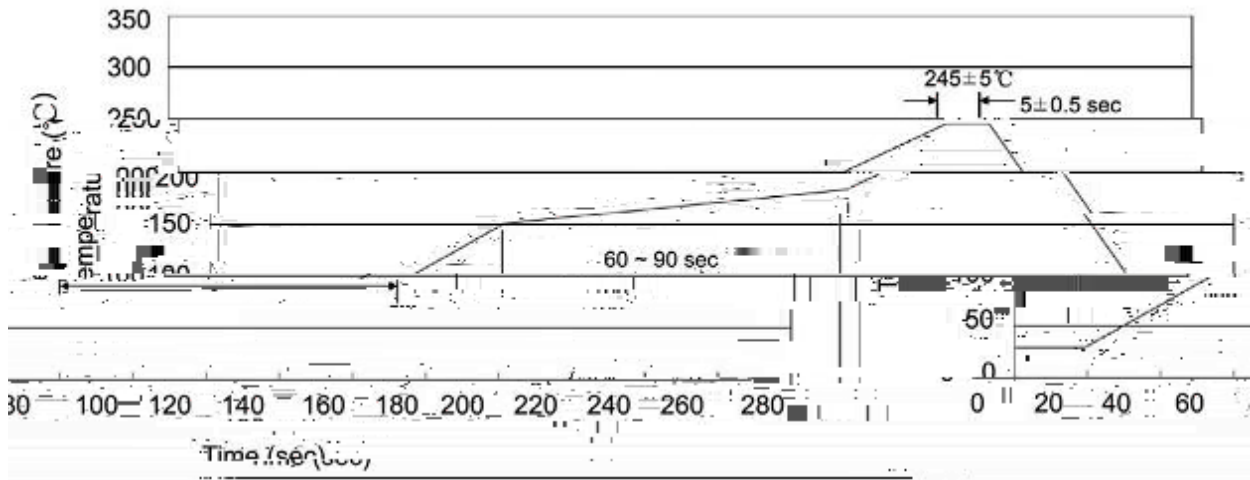
SMBF



/ Marking Instructions



() / K\ d g\ rXk\ r\ Prf\ jid\]f r\ l\ l\]f w\ Jf q\ \rie^žPY-Fr\ \ž



± ± ± ±

/ Resistance to Soldering Heat Test Conditions

± ± ± ±

/ Packaging SPEC.

封装形式	包装数量					包装尺寸 :		
	Units/Reel 只/卷盘	Reels/Inner Box 卷盘/盒	Units/Inner Box 只/盒	Inner Boxes/Outer Box 盒/箱	Units/Outer Box 只/箱	Reel	Inner Box 盒	Outer Box 箱

/ Notices