

5 é / Descriptions

9 5: .> // x 6 4 6 !-} â o

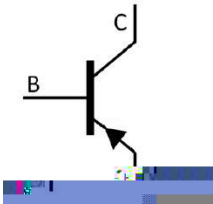
α a / Features

Öy 9 z k v Ýk ' ' +) 7 ö Öä U · ^ } L k) í D } o

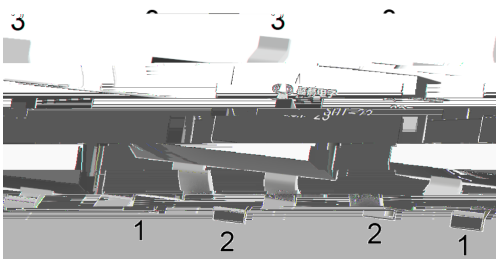
Đ ÷ / Applications

9%† " † " ... k@à ‡ " P °` ϕ k ¿ ^ ... k Æ V æ } Lo

Ã W] Ô · / Equivalent Circuit



• Ô - æ / Pinning

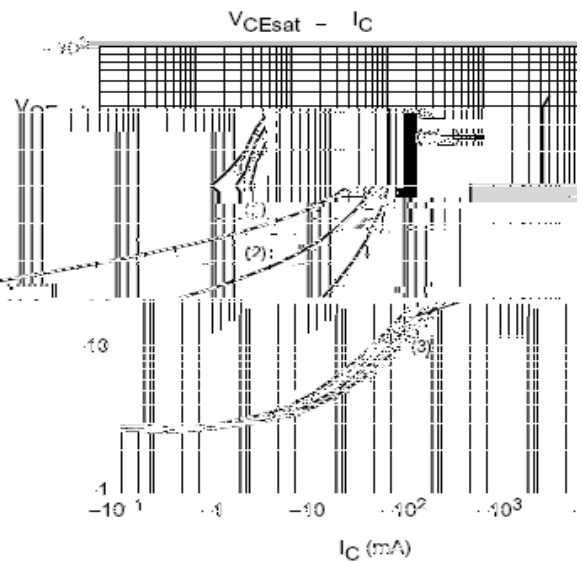
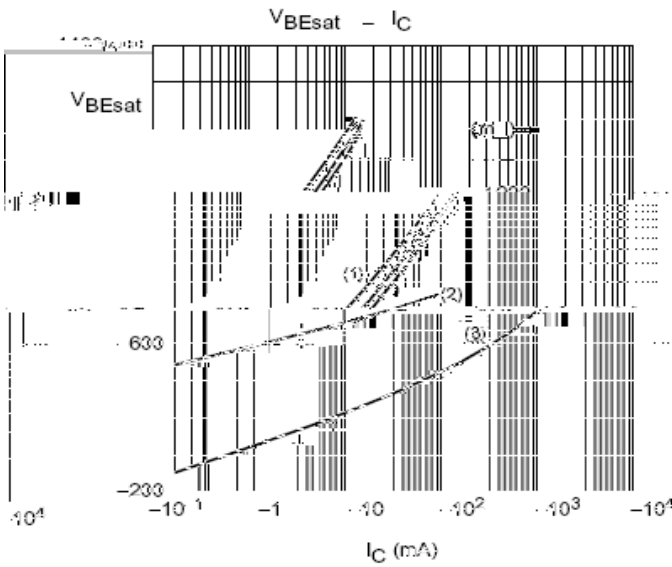
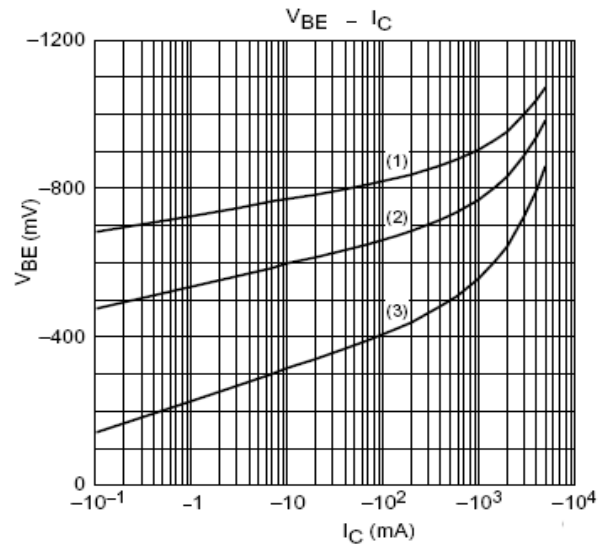
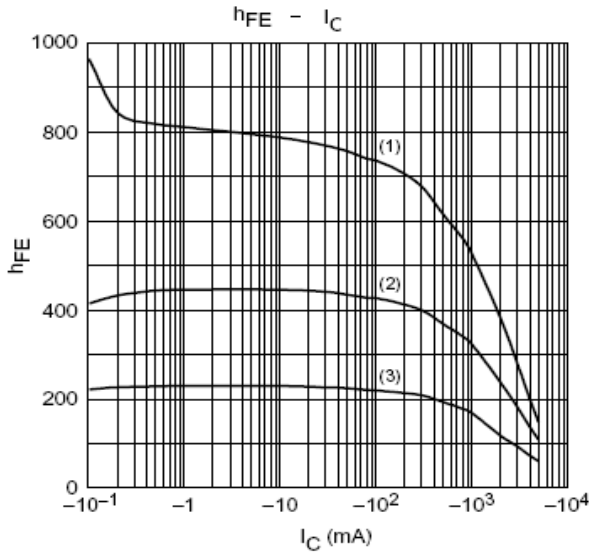


y y y

Z Ü B , M V / hFE Classifications & Marking

@	Z		% y
	#		
	# \bar{A}		

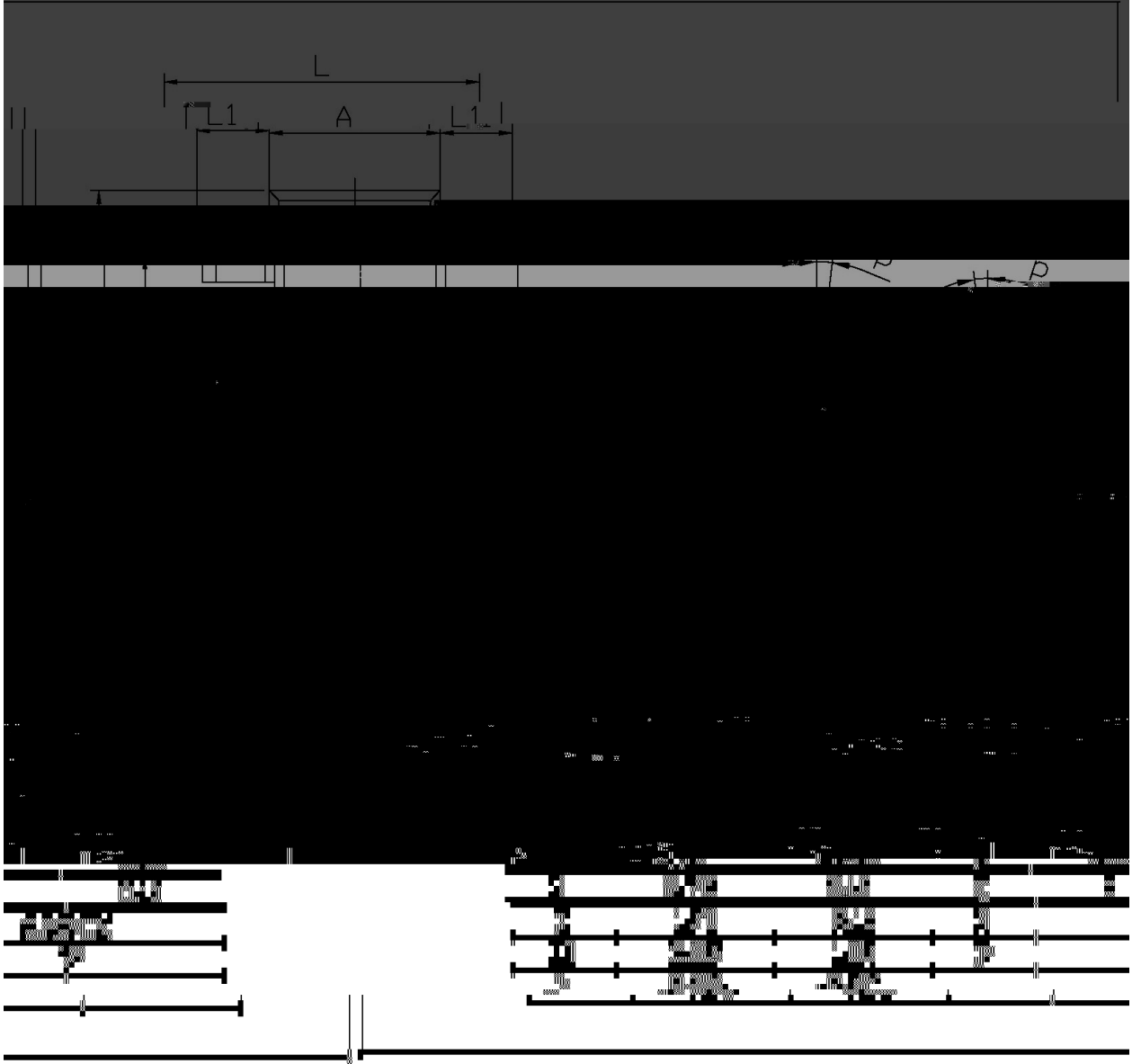
Electrical Characteristic Curve



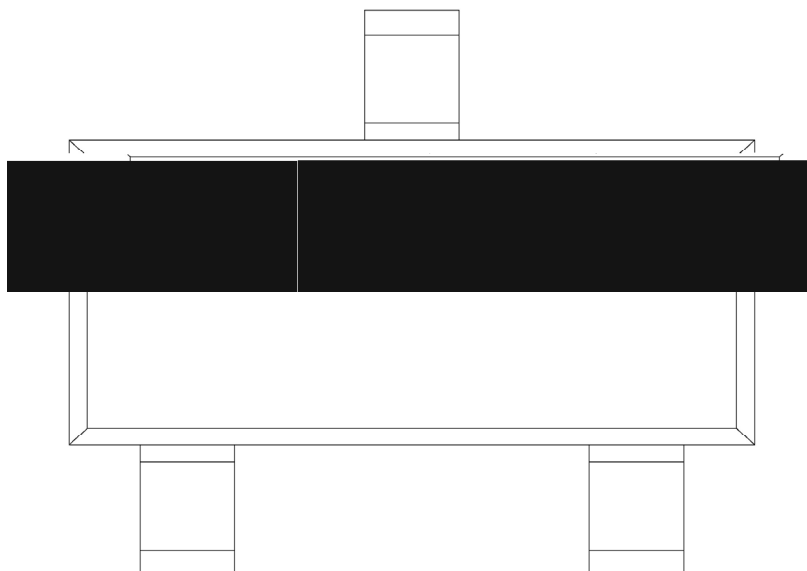
Ø □ =) ϕ / Package Dimensions

SOT-23

单位: mm



, My f / Marking Instructions



" ¢ y
7 y V æ)í D } ö
@ . y " Z W A

y

šWD t...•Žç (x/) / :KSVKXGZ[XK 6XULORK LUX /8 8KLRU] 9URJKXOTM 6

"ç y

o ~‰ ‰ - k ‰ -

o Q r - k 4 Ò r r - r

o D N ò i Ò , ‰ -

ÂD /Cã p` »] / Resistance to Soldering Heat Test Conditions

y r - y r

GP á / Packaging SPEC.

2 & x