

**/ Descriptions**

SOT-23                      PNP                      Silicon PNP Digital transistor in a SOT-23 Plastic Package.

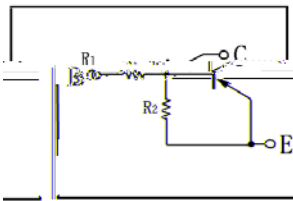
**/ Features**

With built-in bias resistors, simplify circuit design, reduce a quantity of parts and manufacturing process.

**/ Applications**

Switching, inverter circuit, interface circuit and driver circuit applications.

**/ Equivalent Circuit**



**/ Pinning**



PIN 1   Base                      PIN 2   Emitter                      PIN 3   Collector

**/ h<sub>FE</sub> Classifications & Marking**

Marking	H16
---------	-----

# DTA144EKA

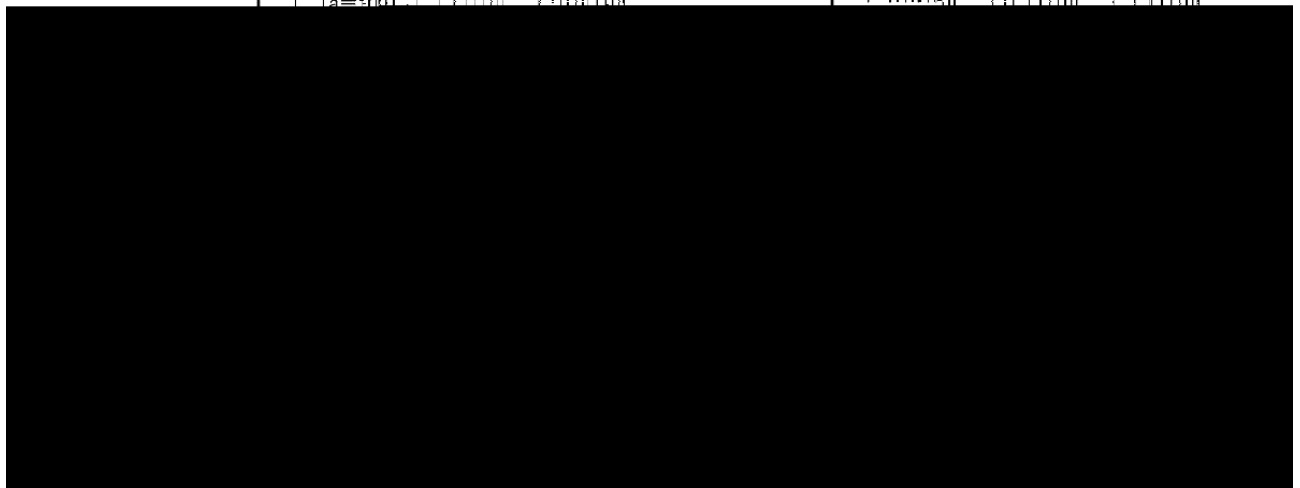
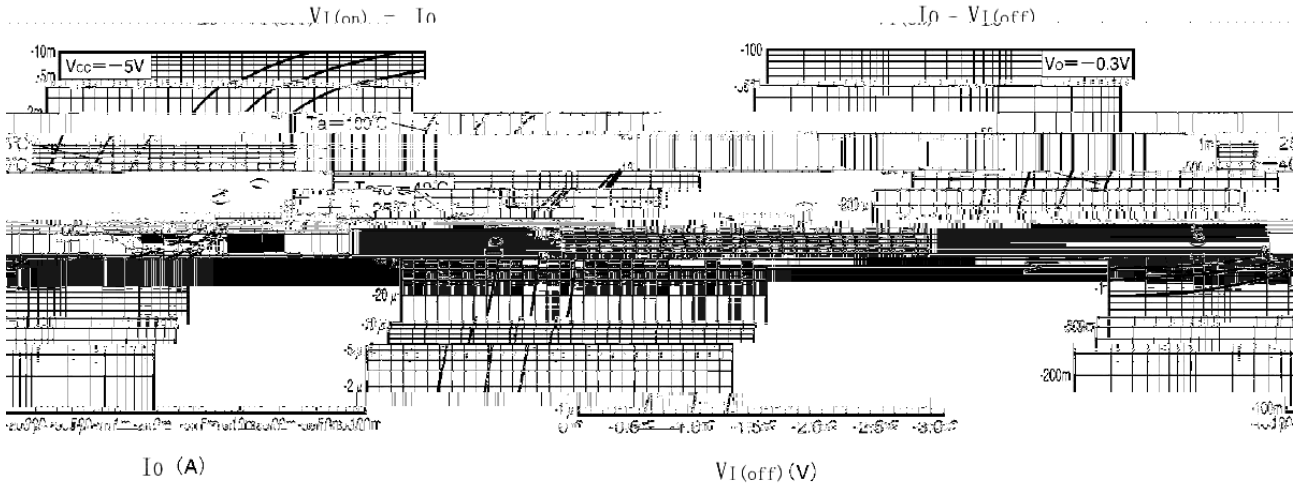
Rev.G May.-2019



Parameter	Symbol	Rating	Unit
Output Voltage	$V_{CC}$	-50	V
Input Voltage	$V_{IN}$	-40	V
		10	V
Output Current	$I_{C\ max}$	-100	mA
	$I_O$	-30	mA
Power Dissipation	$P_d$	200	mW
Junction Temperature	$T_j$	150	
Storage Temperature Range	$T_{stg}$	-55 150	

Parameter	Symbol	Test Conditions	Min	Typ	Max	Unit
Input Voltage	$V_{I(off)}$	$V_{CC}=-5.0V$ $I_O=-100\mu A$			-0.5	V
	$V_{I(on)}$	$V_O=-0.3V$ $I_O=-2.0mA$	-3.0			V

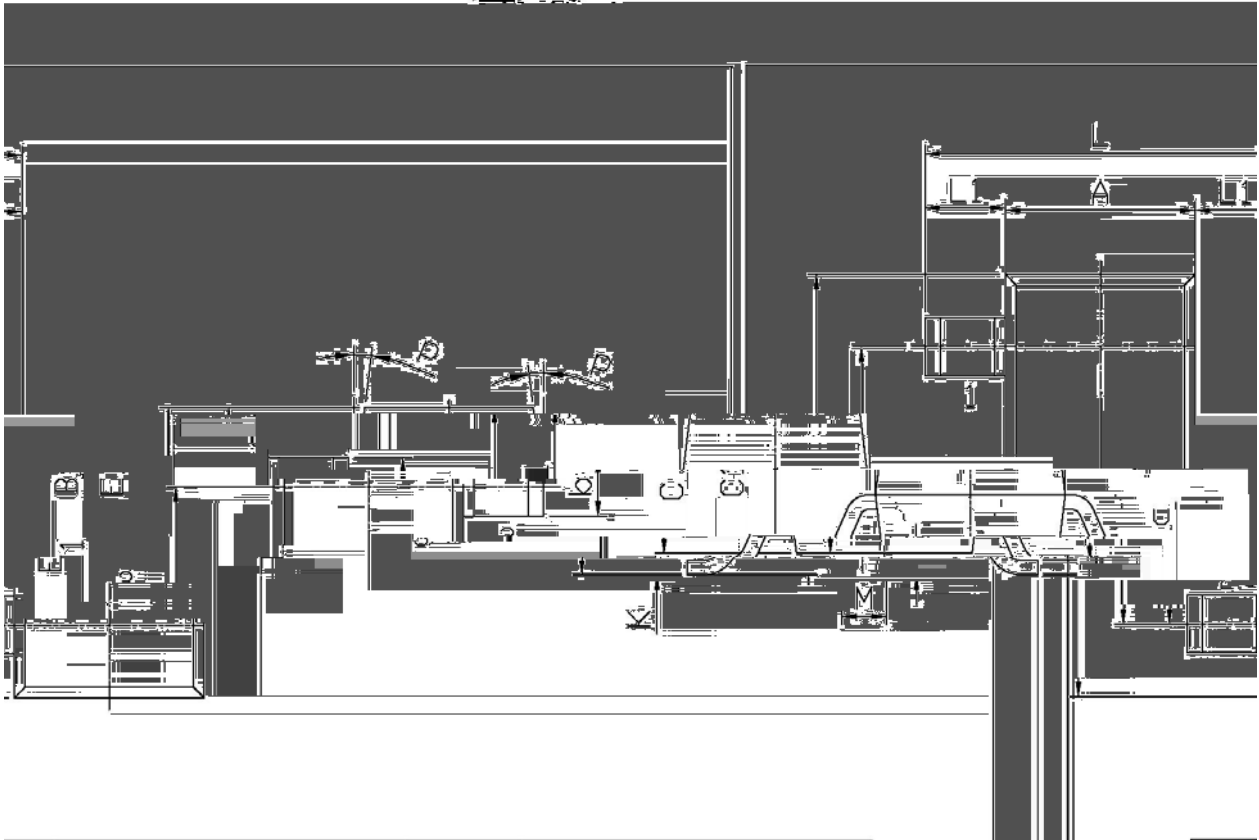
/ Electrical Characteristic Curve



/ Package Dimensions

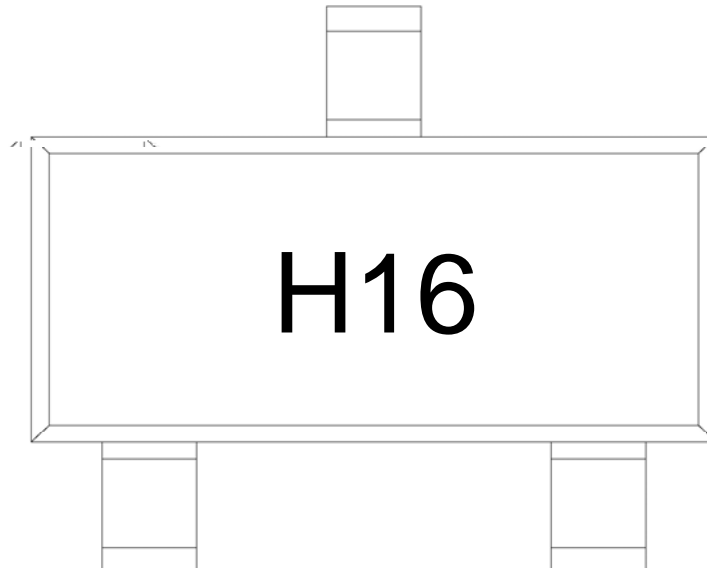
SOT-23

单位: mm



Dimensions in Millimeters			Dimensions in Millimeters		
Symbol	Min	Max	Symbol	Min	Max
L	2.2	2.7	C	1.30Max	
l1	0.45	0.65	c1	0.90	1.20
A	1.15	1.50	c	0.05	0.20
B	2.70	3.10	K	0	0.10
E	1.70	2.10	M	0.20MIN	
E1	0.85	1.05	P	7°	
			b	0.35	0.55

**/ Marking Instructions**



H

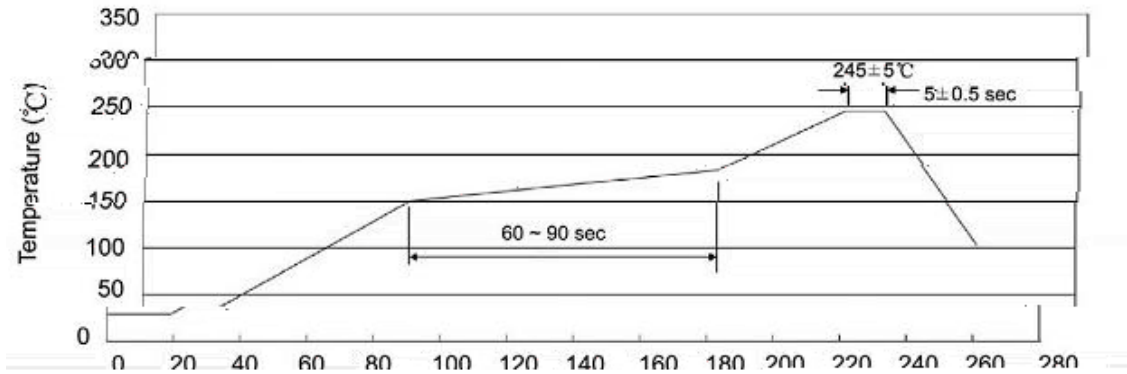
16

Note:

H            Company Code

16           Product Type Code

( ) / Temperature Profile for IR Reflow Soldering(Pb-Free)



Note:

- |   |       |     |           |        |   |
|---|-------|-----|-----------|--------|---|
| 1 | 150   | 180 | 60        | 90sec; | 1.Preheating:150~180 , Time:60~90sec.   |
| 2 | 245±5 |     | 5±0.5sec; |        | 2.Peak Temp.:245±5 , Duration:5±0.5sec. |
| 3 |       | 2   | 10        | /sec.  | 3. Cooling Speed: 2~10 /sec.            |

/ Resistance to Soldering Heat Test Conditions

260±5                      10±1 sec.                      Temp.:260±5                      Time:10±1 sec

/ Packaging SPEC.

/ REEL

Package Type 封装形式	Units 包装数量					Dimension 包装尺寸 (unit: mm <sup>3</sup> )		
	Units/Reel 只/卷盘	Reels/Inner Box 卷盘/盒	Units/Inner Box 只/盒	Inner Boxes/Outer Box 盒/箱	Units/Outer Box 只/箱	Reel	Inner Box 盒	Outer Box 箱
SOT-23	3,000	10	30,000	6	180,000	7 ×8	180×120×180	390×385×205

/ Notices