

Rev.D May.-2017

50V ~ 600V

2.0A

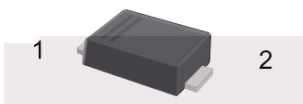
SOD-123FL

Surface Mount Superfast Recovery Rectifiers, Reverse Voltage 50 to 600V, Forward Current 2.0A, SOD-123FL thin package.

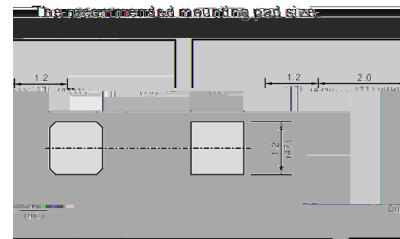
RoHS 2011/65/EU

Superfast recovery times for high efficiency, Lead free in comply with EU RoHS 2011/65/EU directives, For surface mounted applications. Halogen free product.

General purpose.



PIN	DESCRIPTION
1	Cathode
2	Anode



See Marking Instructions.

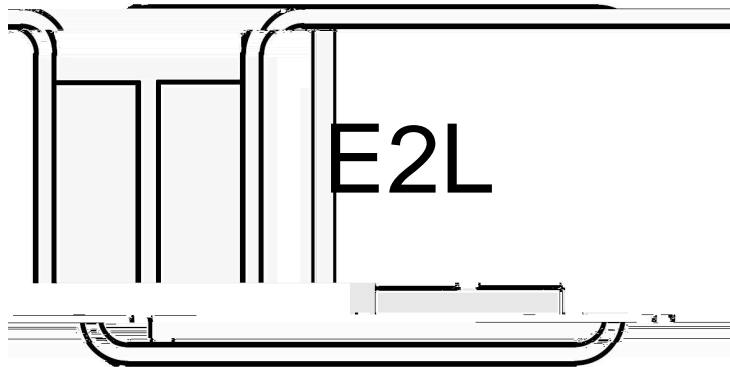
Parameter	Symbol	Rating							Unit
		ES2AW	ES2BW	ES2CW	ES2DW	ES2EW	ES2GW	ES2JW	
Maximum Repetitive Peak Reverse Voltage	V_{RRM}	50	100	150	200	300	400	600	V
Maximum RMS voltage	V_{RMS}	35	70	105	140	210	280	420	V

Rev.D May.-2017

Rev.D May.-2017

Marking

Type number	Marking code
ES2AW	
ES2BW	
E2L	
E2M	
E2H	
	ES2CW
	ES2DW
	ES2EW
	ES2GW
	ES2JW



E2L

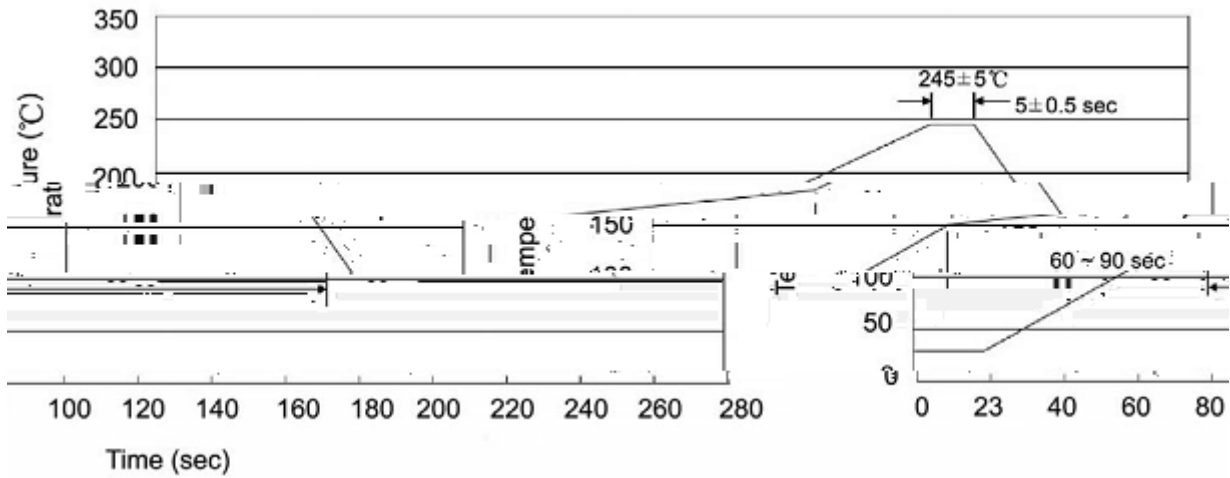
1 *

3 *

Note:

E2L Product Type Code

Lot No. Code The 1st * means:YM Code The last 3 * means:little Lot No
Code

Temperature Profile for IR Reflow Soldering(Pb-Free)

Note:

- | | | | | | |
|---|-------|-----|-------|--------|---|
| 1 | 25 | 150 | 60 | 90sec; | 1.Preheating:25~150 , Time:60~90sec. |
| 2 | 245±5 | | 5±0.5 | sec; | 2.Peak Temp.:245±5 , Duration:5±0.5sec. |
| 3 | | 2 | 10 | /sec. | 3. Cooling Speed: 2~10 /sec. |

260±5

10±1 sec.

Temp.:260±5

Time:10±1 sec

/ REEL

Package Type 封装形式	Units 包装数量					Dimension 包装尺寸 (unit: mm ³)		
	只卷盘	卷盘盒	只盒	盒箱	只箱	盒	箱	
SOD-123FL	3000	8	24000	5	120000	7 x11	185X180X105	390X385X205