

/ Descriptions

50V ~ 600V

3.0A SMB

/ Features

2011/65/EU

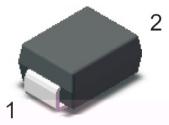
RoHS

/ Applications

/ Equivalent Circuit

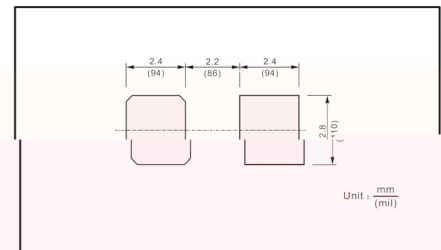


/ Pinning



PIN	DESCRIPTION
1	Cathode
2	Anode

The recommended mounting pad size.



/ Marking

/ Absolute Maximum Ratings(Ta=25)

/ Electrical Characteristics(Ta=25)

								μ
								μ

/ Electrical Characteristic Curve

Fig.1 Reverse Recovery Time Characteristic And Test Circuit Diagram.

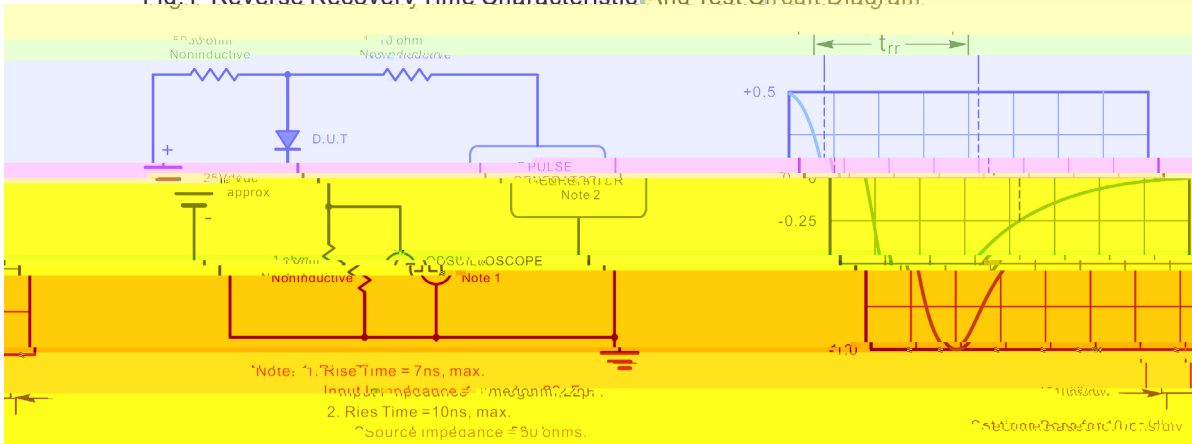


Fig.2 Maximum Average Forward Current Rating.

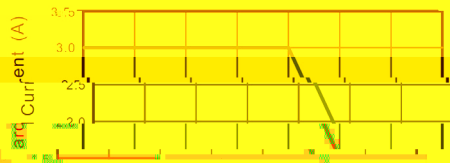


Fig.3 Typical Reverse Characteristic

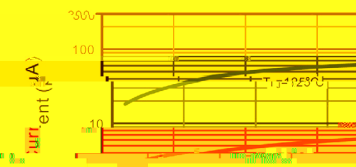


Fig.4 Typical Forward Characteristics

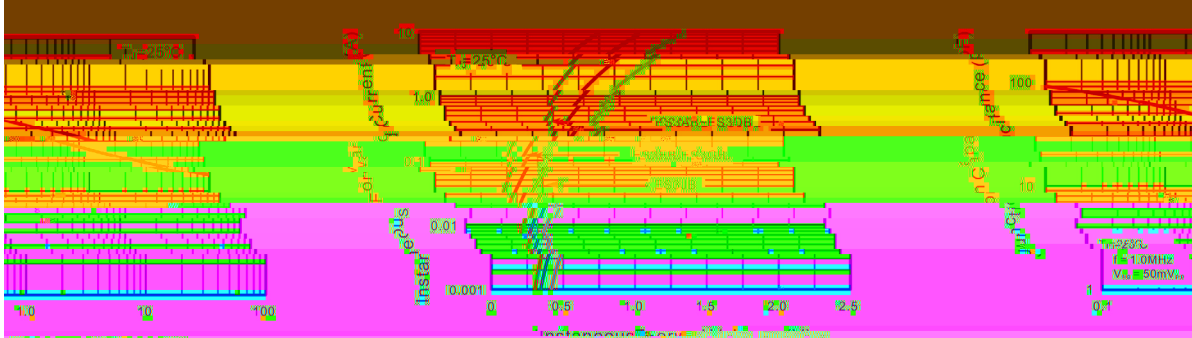
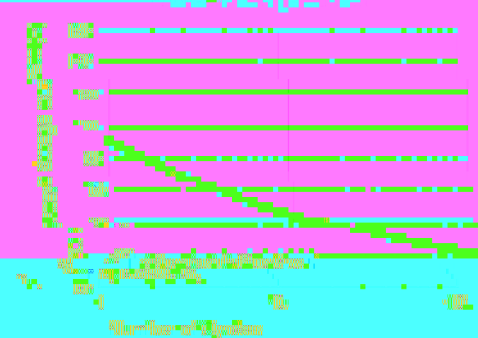
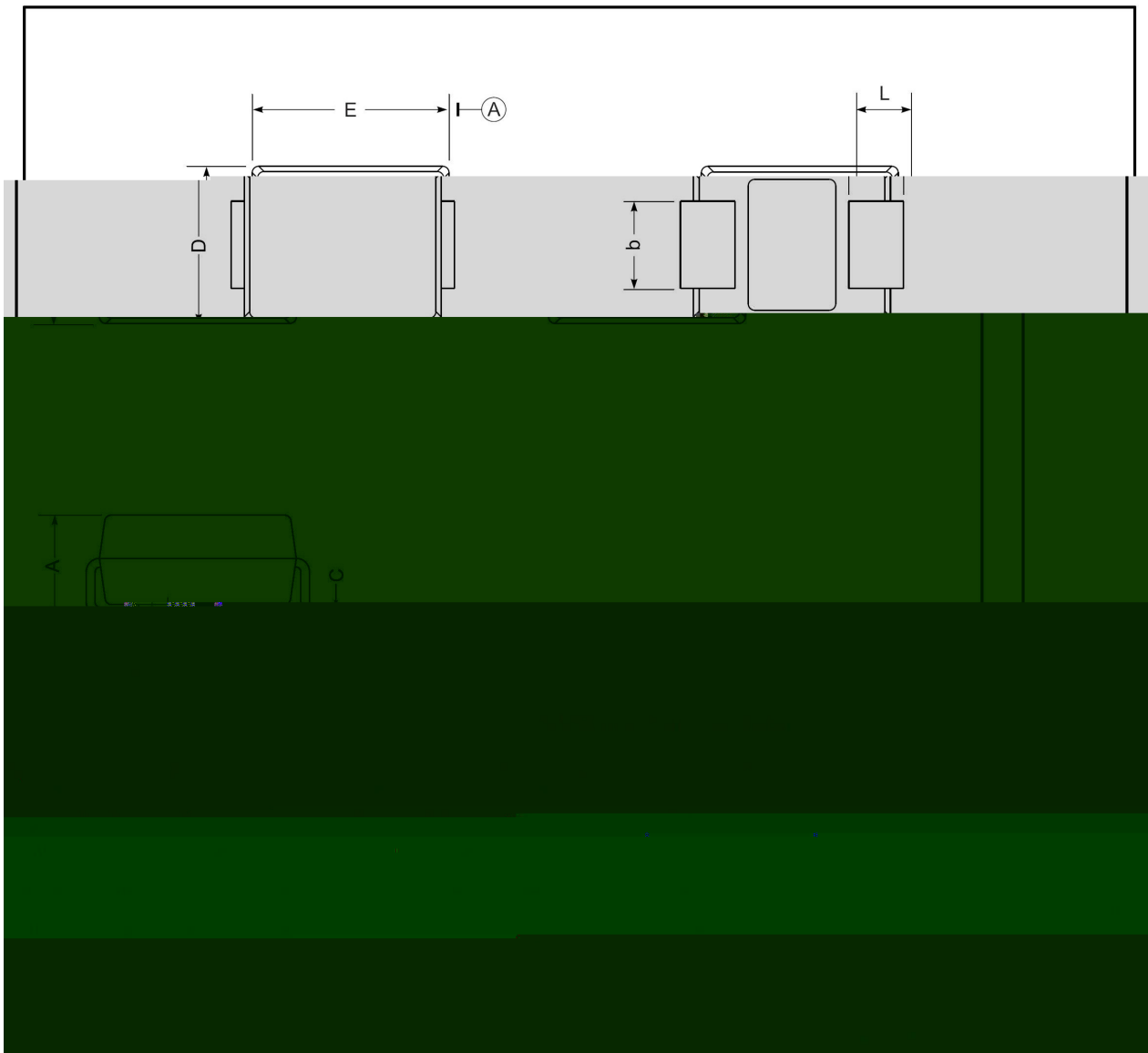


Fig.5 Typical Capacitance



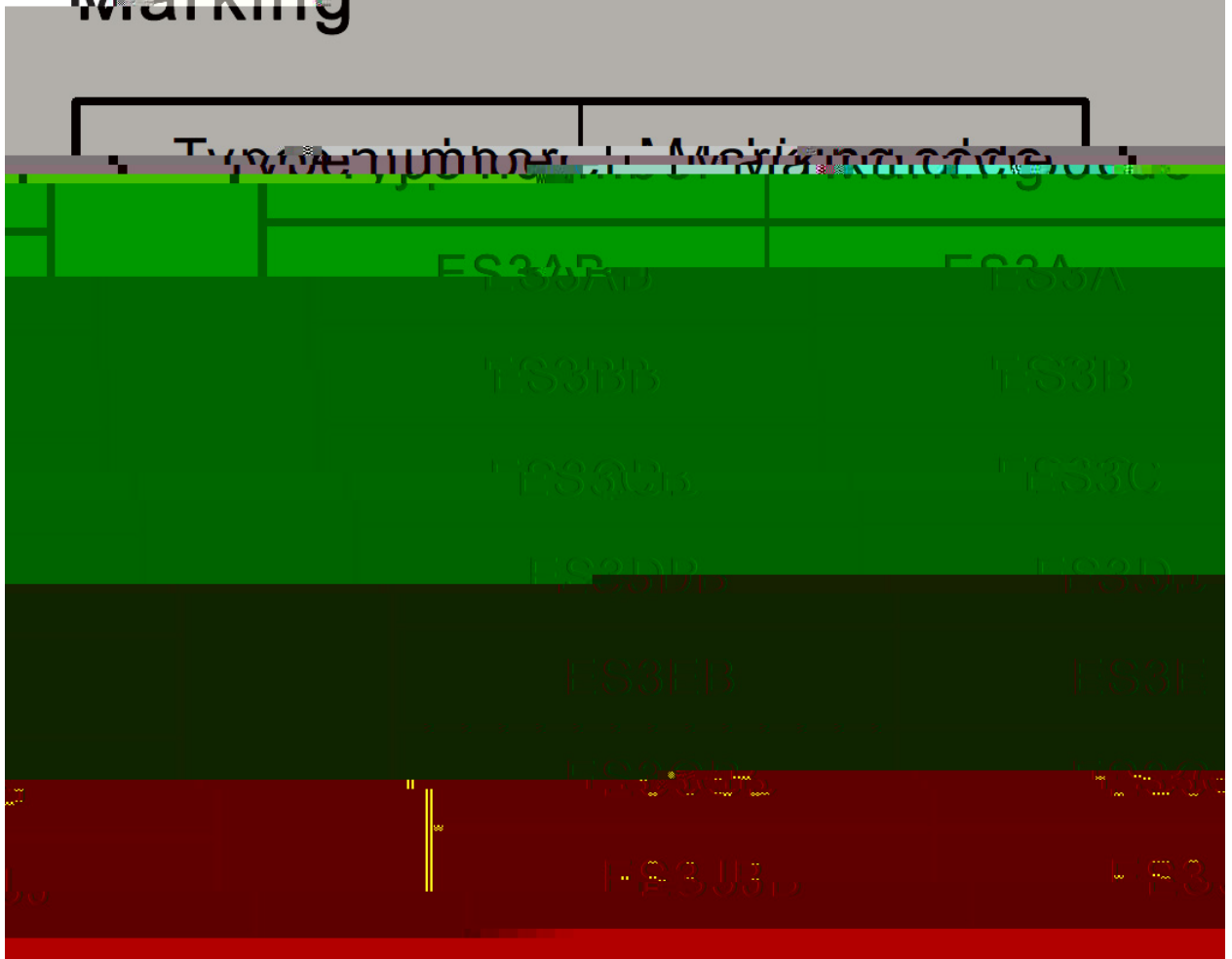
/ Package Dimensions

SMB

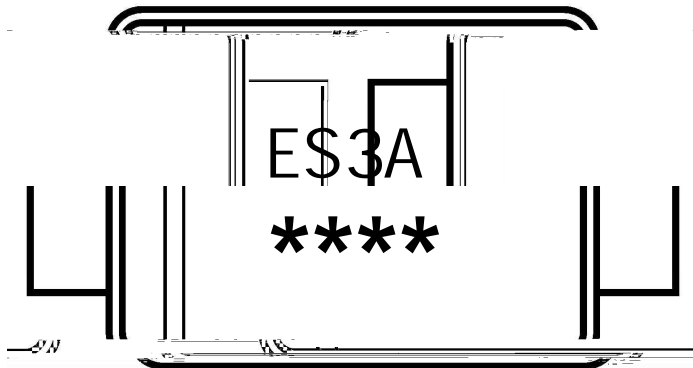


/ Marking Instructions

Marking



/ Marking Instructions



ES3A

1 *

3 *

ES3A

*

*

ES3AB~ES3JB