

# FMSB40B~FMSB40M

Rev.C Dec.-2024

## 5 Ø / Descriptions

4.0A  $n \mu \text{É}x \text{ì} \text{d}ý$   $v \text{ k V} "$  UMSB / xo  
 4.0A Surface Mount Glass Passivated Bridge Rectifier,UMSB thin package.

## / " / Features

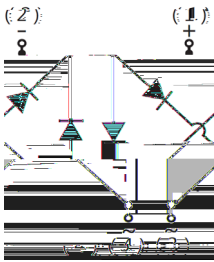
$\text{ì} \text{d}ý / \text{ì} \text{k F g } 9 \text{ y} < \text{d} < \text{k } 3 \text{ g } \text{ v y} ' \text{k } \% , \text{ F g } ^\circ \text{ Ö k } \text{ n } \mu \text{É}x \text{ k}$   
 )í D }o

Glass Passivated Chip Junction, Reverse Voltage :100 to 1000V,Forward Current: 4.0A, Fast reverse recovery time, Designed for Surface Mount Application, HF product.

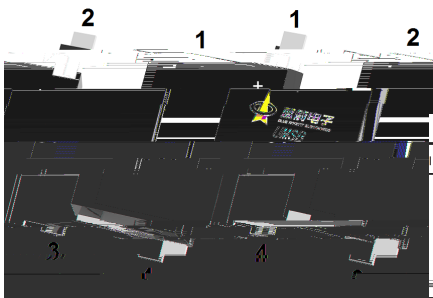
## — ÷ / Applications

%† " (o  
 General purpose.

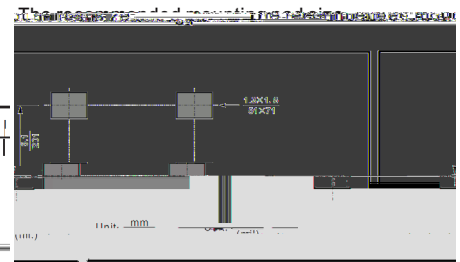
## ^ W ] Ô• / Equivalent Circuit



## Û- æ / Pinning



| Pin No. | Pin Description    |
|---------|--------------------|
| 1       | Output Anode (+)   |
| 2       | Output Cathode (-) |
| 3       | Input Pin (~)      |
| 4       | Input Pin (~)      |



## , M V / Marking

- ~ " ¢o  
 See Marking Instructions.

# FMSB40B~FMSB40M

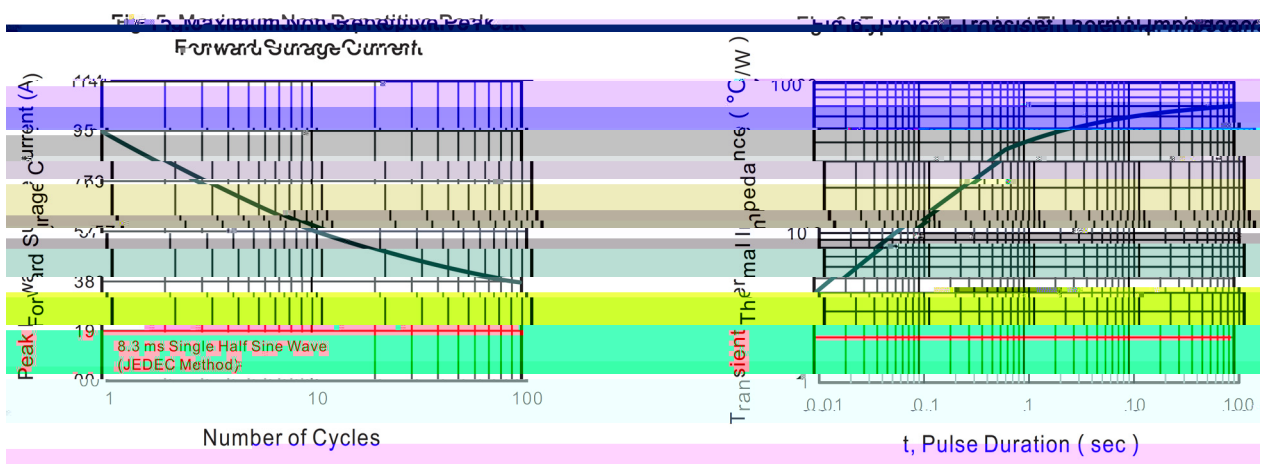
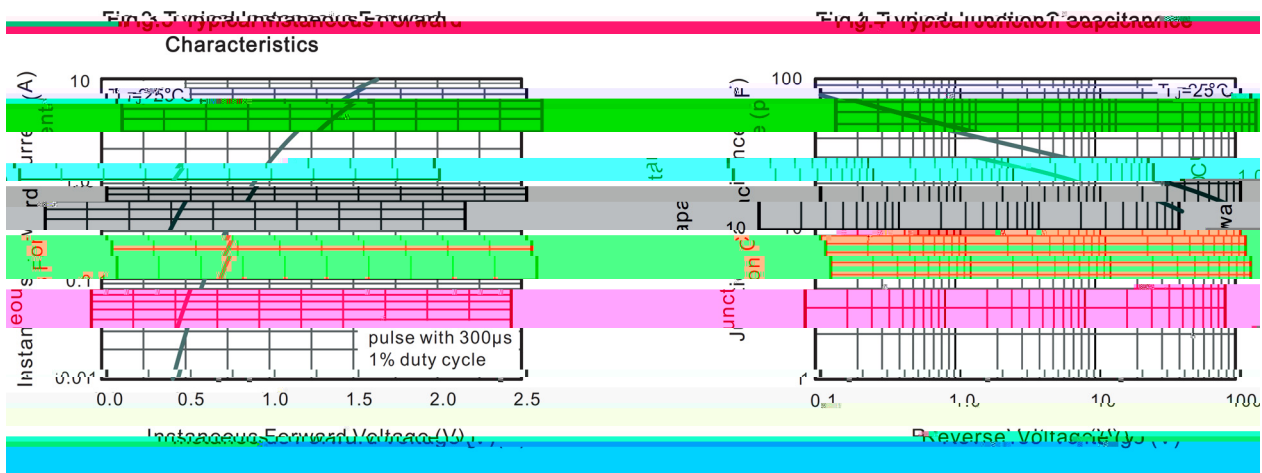
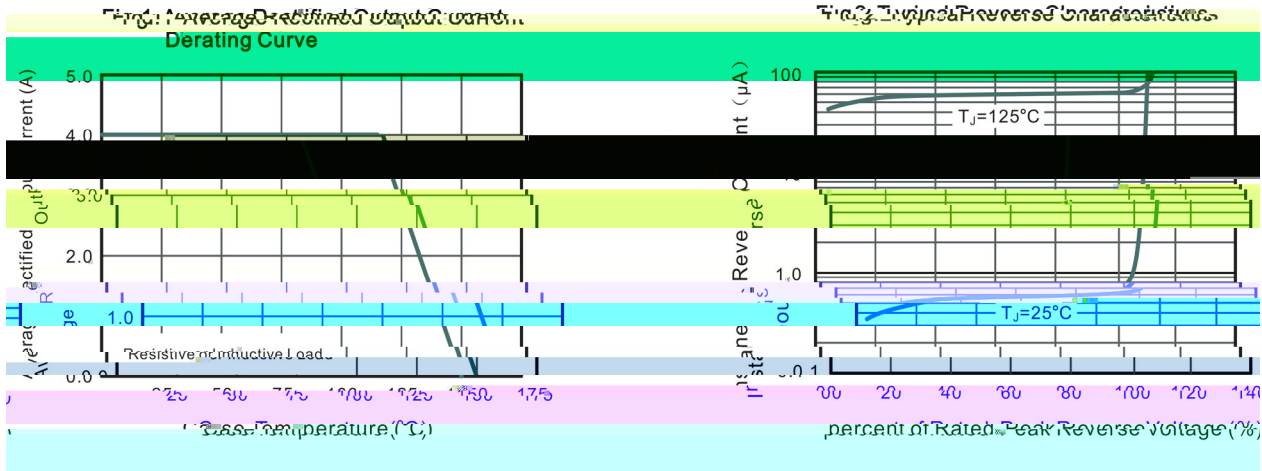
Rev.C Dec.-2024



DATA SHEET

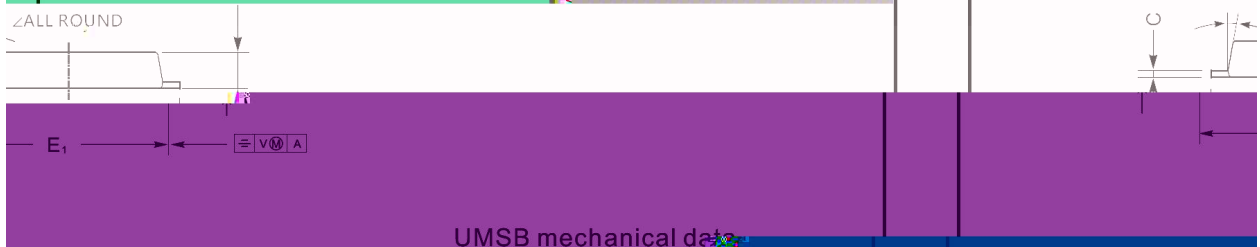
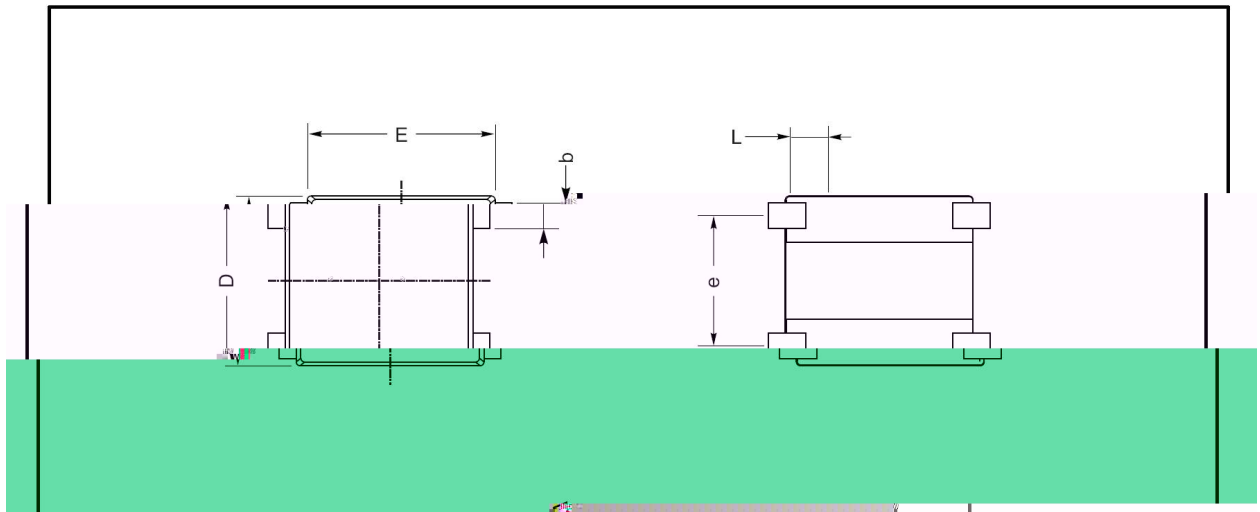
| @<br>Parameter  | Z<br>Symbol    | Rating   |         |         |         |         |         | % y<br>Unit |
|---|----------------|----------|---------|---------|---------|---------|---------|-------------|
|   |                | FMSB40B  | FMSB40D | FMSB40G | FMSB40J | FMSB40K | FMSB40M |             |
| Maximum Repetitive Peak Reverse Voltage   | $V_{RRM}$      | 100      | 200     | 400     | 600     | 800     | 1000    | V           |
| Maximum RMS voltage   | $V_{RMS}$      | 70       | 140     | 280     | 420     | 560     | 700     | V           |
| Maximum DC Blocking Voltage   | $V_{DC}$       | 100      | 200     | 400     | 600     | 800     | 1000    | V           |
| Average Rectified Output Current at $T_c = 115^\circ C$   | $I_o$          | 4.0      |         |         |         |         |         | A           |
| Peak Forward Surge Current 8.3 ms Single Half Sine Wave Superimposed on Rated Load (JEDEC Method) | $I_{FSM}$      | 95       |         |         |         |         |         | A           |
| Typical Junction Capacitance <sup>Note1</sup>   | $C_j$          | 50       |         |         |         |         |         | pF          |
|   | $R_{JA}$       | 60       |         |         |         |         |         | C/W         |
|   |                | 15       |         |         |         |         |         |             |
|   | $R_{JL}$       | 25       |         |         |         |         |         |             |
| Maximum Reverse Recovery Time <sup>Note3</sup>  | $t_{rr}$       | 150      |         |         | 250     | 500     |         | ns          |
| Operating and Storage Temperature Range   | $T_j, T_{stg}$ | -55~+150 |         |         |         |         |         |             |

## Electrical Characteristic Curve



Ø/ ) ☉ / Package Dimensions

UMSB



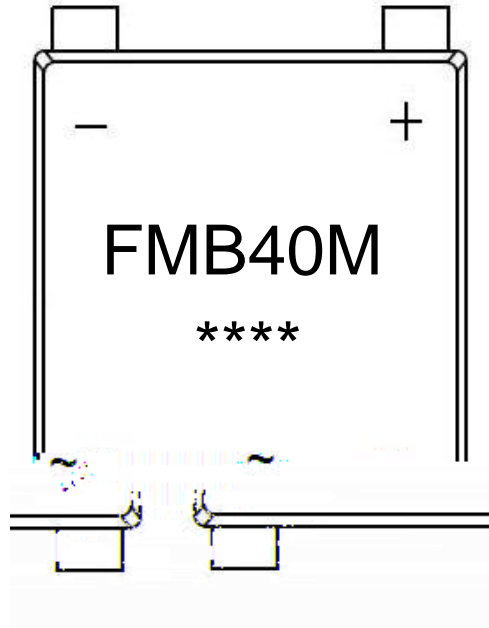
UMSB mechanical data

| A   | C    | D   | E   | E <sub>1</sub> | L    | e   | b    | ∠   | UNIT |
|-----|------|-----|-----|----------------|------|-----|------|-----|------|
| 1.3 | 0.29 | 7.0 | 7.0 | 8.9            | 1.0  | 5.5 | 1.13 |     | mm   |
| 1.3 | 0.17 | 6.2 | 7.1 | 8.4            | 1.0  | 4.9 | 0.95 |     | min  |
| 59° | 12   | 276 | 299 | 350            | 55   | 209 | 45   | 10° | max  |
| 51  | 7    | 244 | 280 | 331            | 31.5 | 193 | 37   |     | mil  |
|     |      |     |     |                |      |     |      |     | min  |

# FMSB40B~FMSB40M

Rev.C Dec.-2024

, M y / Marking Instructions



" ¢

FMB40M y

" Z W A

\*\*\*\* y

ÿD Z W A k ÿD Z J

Note:

FMB40M y Product Type Code

\*\*\*\* y

2 U Z 4 U ) U J K I U J K I N G T M K } O Z N 2 U Z 4 U

## Marking

| Type number | Marking code |
|-------------|--------------|
| FMSB40B     | FMB40B       |
| FMSB40D     | FMB40D       |
| FMSB40G     | FMB40G       |
| FMSB40J     | FMB40J       |
| FMSB40K     | FMB40K       |
| FMSB40M     | FMB40M       |

# FMSB40B~FMSB40M

Rev.C Dec.-2024



蓝箭电子  
BLUE ROCKET ELECTRONICS

DATA SHEET

WD t c (x /) / :KSVKXGZ[XK 6XULORK LUX /8 8KLRU] 9URJKXO

|  |
|--|
|  |
|  |
|  |
|  |
|  |
|  |
|  |

" c y  
 1o ~ %o 150 %180 - k 60 %90sec;  
 2o Q 245 r5 - k 4 0 5 r0.5sec;  
 3o D N ò i 00 , 2 %10 - /sec.

Note:  
 1.Preheating:150~180 - , Time:60~90sec.  
 2.Peak Temp.:245 r5 - , Duration:5 r0.5sec.  
 3. Cooling Speed: 2~10 - /sec.

## D /C<sup>a</sup> p fl » ] / Resistance to Soldering Heat Test Conditions

y 260 r5 - y 10 r1 sec. Temp.:260±5 Time:10±1 sec

## G P Æ / Packaging SPEC.

2 & x / REEL

| Package Type | Units ;>B fH | Dimension ;>B p . (unit ~ mm <sup>3</sup> ) |
|--------------|--------------|---|
| 7>B E        |              |   |