

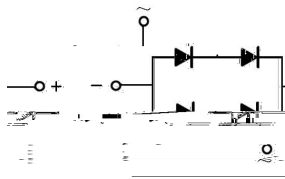
Rev.D May.-2017

2.0A ABF
 2.0A Surface Mount Glass Passivated Bridge Rectifier, ABF thin package.

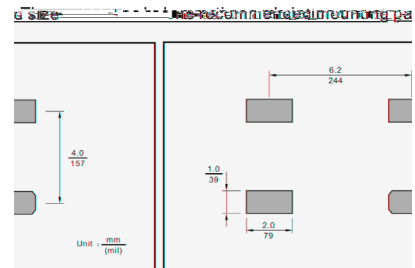
1000V 2.0A

Glass Passivated Chip Junction, Reverse Voltage: 1000V, Forward Current: 2.0A, Fast reverse recovery time, Designed for Surface Mount Application. Halogen free product.

General purpose.



PIN	DESCRIPTION
1	Input Pin (~)
2	Input Pin (~)
3	Output Anode (+)
3	Output Anode (+)



See Marking Instructions.

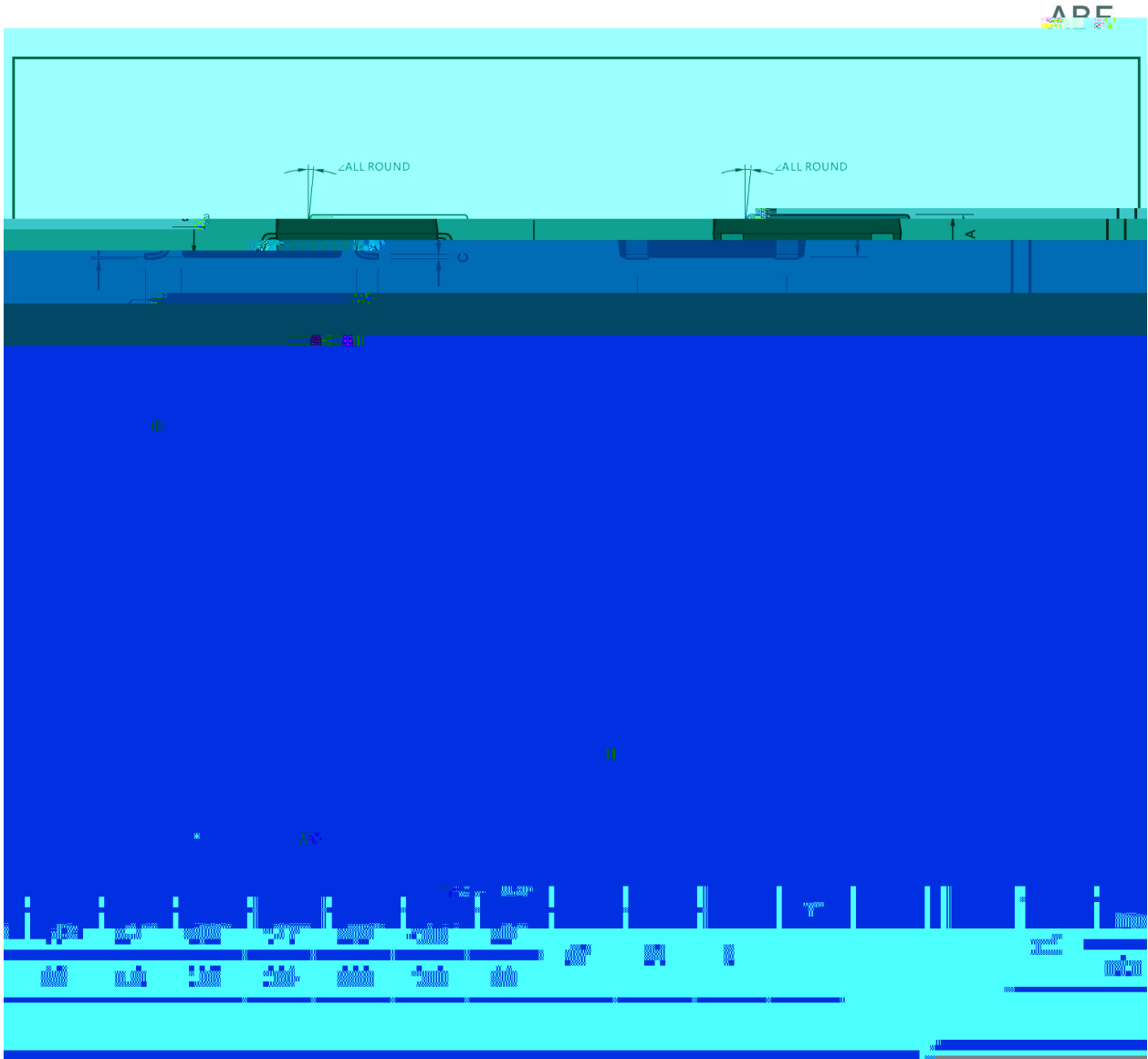
Rev.D May.-2017

Parameter	Symbol	Rating	Unit
Maximum Repetitive Peak Reverse Voltage	V_{RRM}	1000	V
Maximum RMS Voltage	V_{RMS}	700	V
Maximum DC Blocking Voltage	V_{DC}	1000	V
Average Rectified Output Current at $T_c = 125$	I_o	2.0	A
Peak Forward Surge Current 8.3 ms Single Half Sine Wave Superimposed on Rated Load	I_{FSM}	60	A
Typical Junction Capacitance ^{Note1}	C_j	40	pF
Typical Thermal Resistance ^{Note2}	R_{JA}	70	/W
Operating and Storage Temperature Range	T_j, T_{stg}	-55~150	

Note:

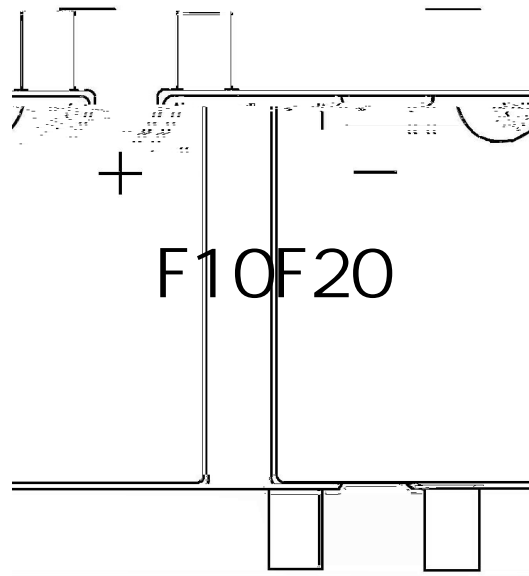
- 1.Measured at 1MHz and applied reverse voltage of 4 V D.C.
2. Mounted on glass epoxy PC board with 4× 1.0" X 1.0" (2.54 X 2.54 cm) copper pad.

Parameter	Symbol	Test Conditions	Rating	Unit
Forward Voltage per element	V_F	$I_F=2.0A$	1.3	V
Maximum DC Reverse Current at Maximum DC Blocking Voltage	I_R	$T_a=25$	5.0	μA
		$T_a=125$	50	μA



Marking





F10F20

1 *

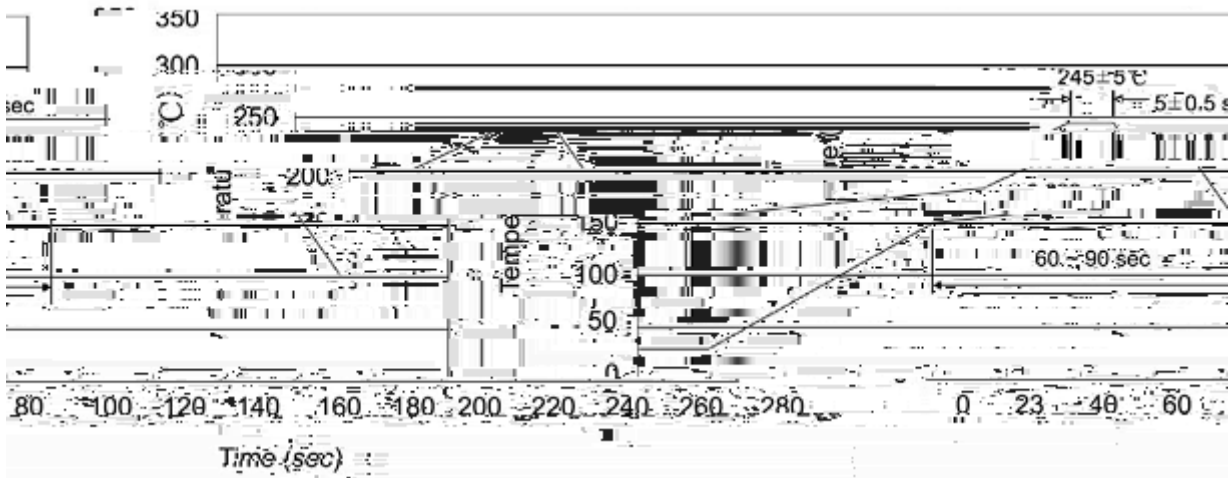
3 *

Note:

F10F20 Product Type Code

Lot No. Code The 1st * means:YM Code The last 3 * means:little Lot

No Code

Temperature Profile for IR Reflow Soldering(Pb-Free)

Note:

- | | | | | | |
|---|-------|-----|-------|----------|---|
| 1 | 25 | 150 | 60 | 90sec; | 1.Preheating:25~150 , Time:60~90sec. |
| 2 | 245±5 | | 5±0.5 | sec; | 2.Peak Temp.:245±5 , Duration:5±0.5sec. |
| 3 | | | 2 | 10 /sec. | 3. Cooling Speed: 2~10 /sec. |

260±5

10±1 sec.

Temp.:260±5

Time:10±1 sec

/ REEL

Package Type	Units	Dimension	(unit mm ³)
--------------	-------	-----------	-------------------------