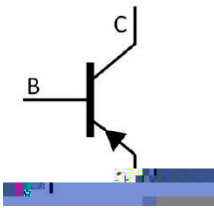


KF \$0) CD GE G` Silicon PNP transistor in a TO-92LM Plastic Package.

BK: *)' 0
Low collector saturation, high speed switching time, complementary to KTC3209.

Power amplifier and switching applications.



PIN1 Base PIN 2 Collector -1382alec4lec040607e71 Tf2.2229 0 TD0 Tf1 Tf2.2229 0 T4MarE73

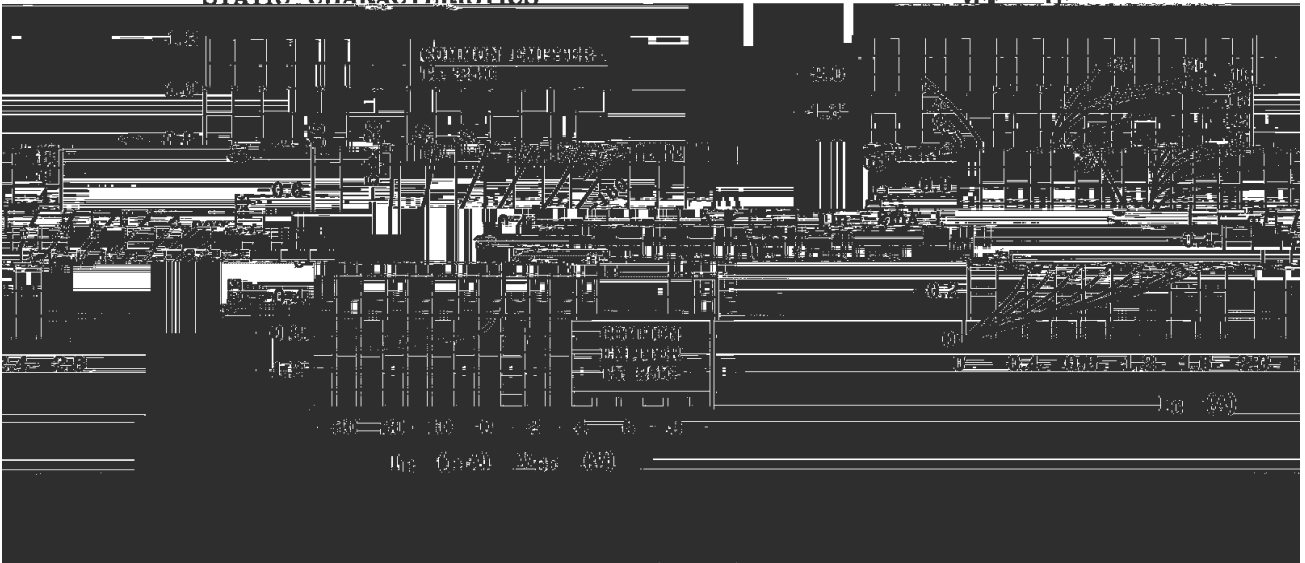
Parameter	Symbol	Rating	Unit
Collector to Base Voltage	V_{CBO}	-50	V
Collector to Emitter Voltage	V_{CEO}	-50	V
Emitter to Base Voltage	V_{EBO}	-5.0	V
Collector Current - Continuous	I_C	-2.0	A
Collector Power Dissipation	P_C	1.0	W
Junction Temperature	T_J	150	
Storage Temperature Range	T_{stg}	-55 150	

Parameter Symbol Test Conditions Min

/ Electrical Characteristic Curve

STATIC CHARACTERISTICS

$V_{CE} - I_C$

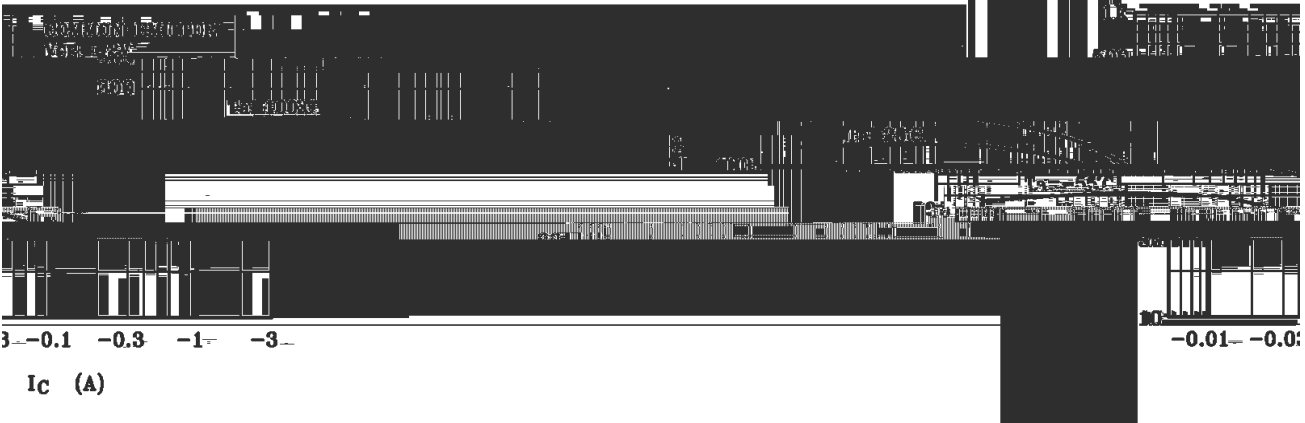


I_C (A)

I_C (A)

$\beta - I_C$

h_{FE}

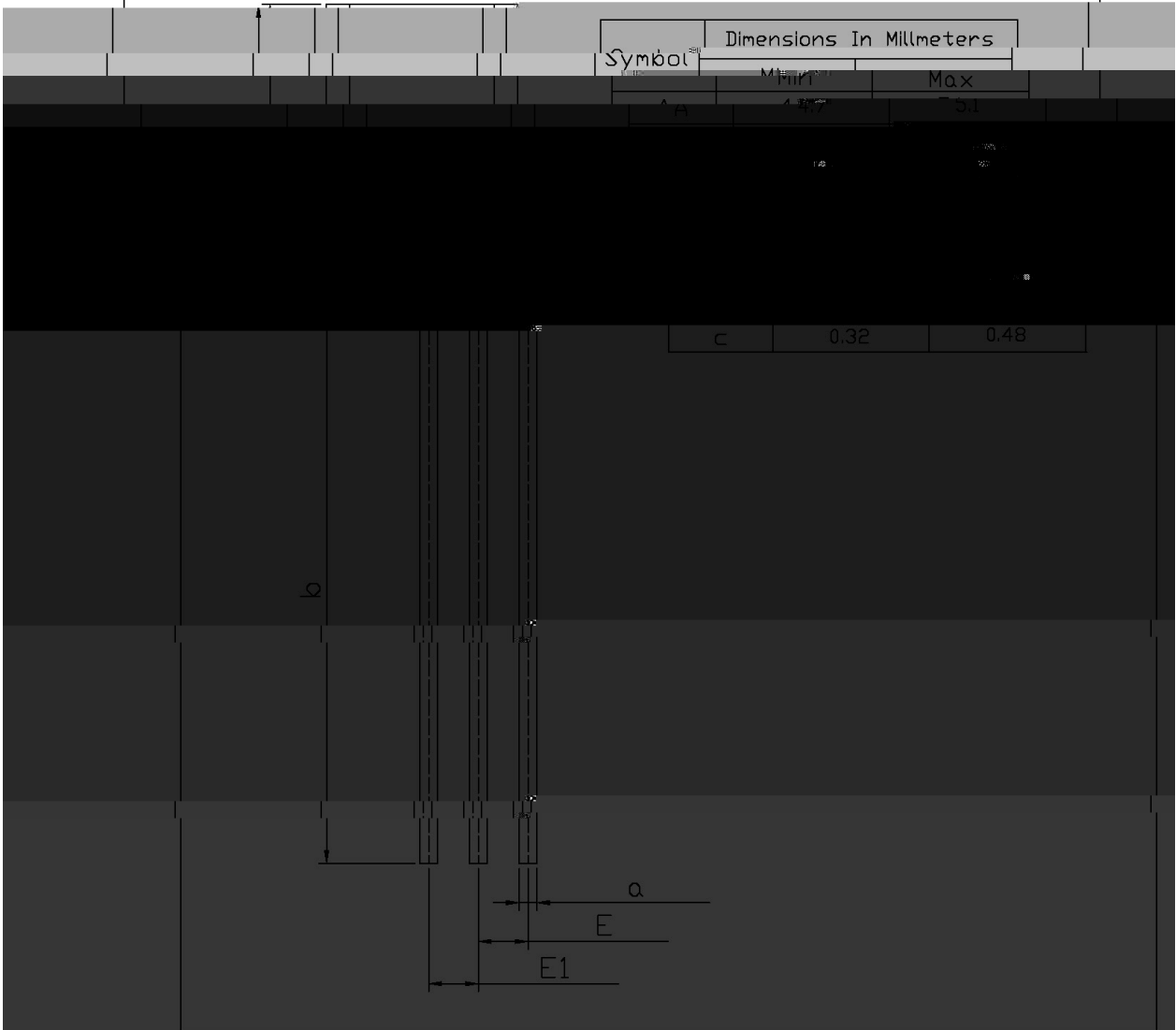
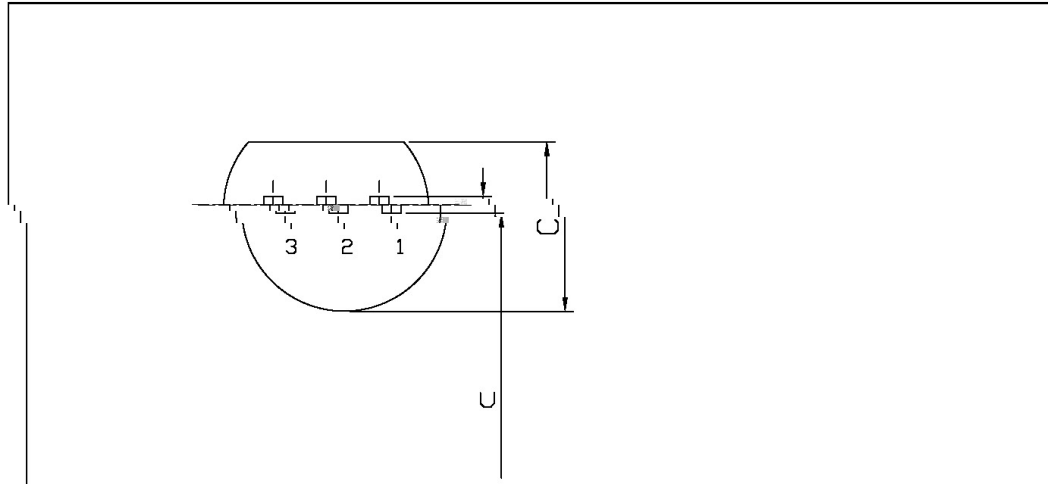


I_C (A)

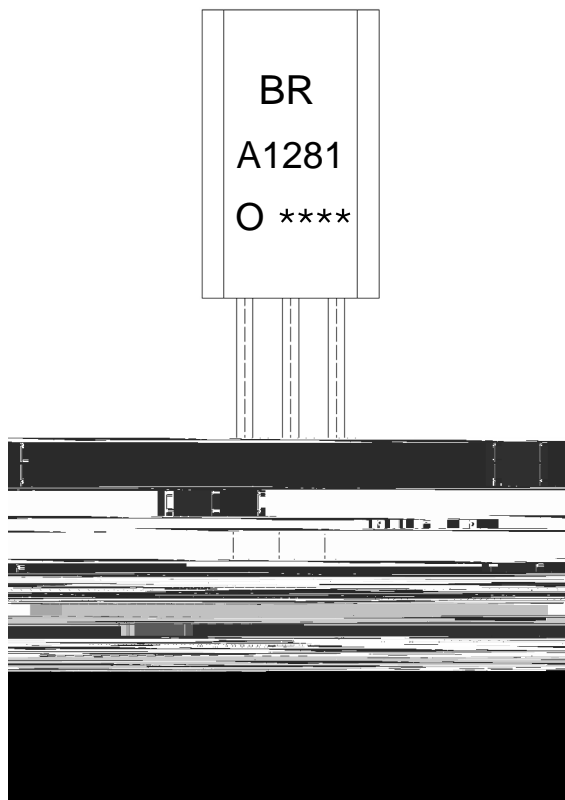
/ Package Dimensions

T0-92LM

Unit: mm



/ Marking Instructions



9| 1

8() / (

F 1

!!!!

Note:

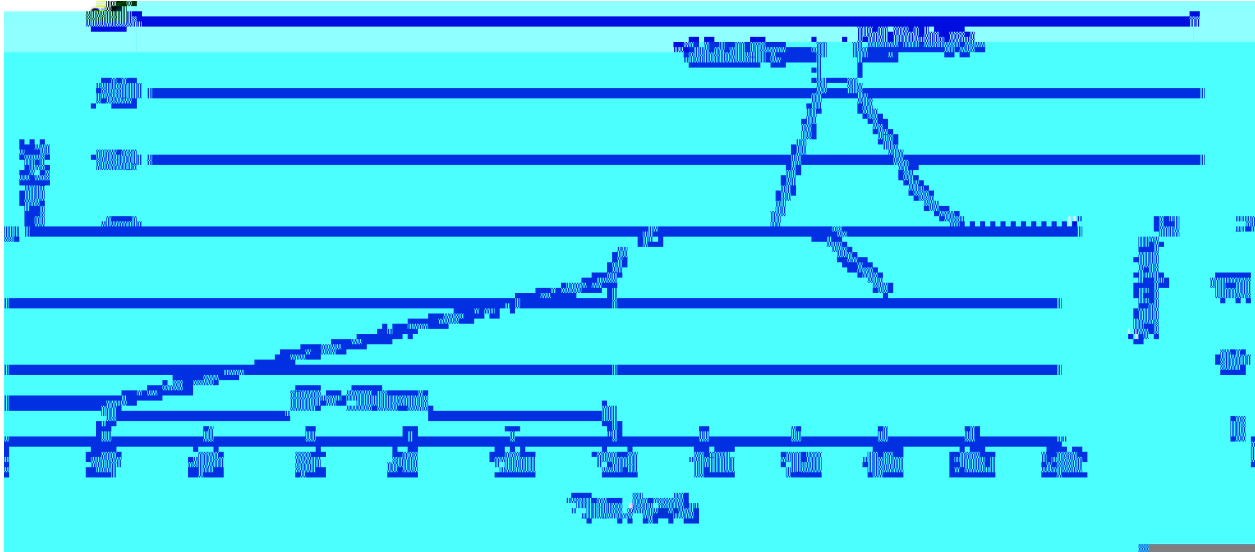
BR: Company Code.

A1281: Product Type.

O: h_{FE} Classifications Symbol

****: Lot No. Code, code change with Lot No.

() / Temperature Profile for Dip Soldering(Pb-Free)



Note:

- | | | | | | |
|---|--------|-----|------------|----------|---|
| 1 | 25 | 150 | 60 | 90sec; | 1.Preheating:25~150 , Time:60~90sec. |
| 2 | 255..5 | | 5..0.5sec; | | 2.Peak Temp.:255..5 , Duration:5..0.5sec. |
| 3 | | | 2 | 10 /sec. | 3. Cooling Speed: 2~10 /sec. |

/ Resistance to Soldering Heat Test Conditions

270..5 10...1 sec. Temp.:270..5 Time:10...1 sec

/ Packaging SPEC.

/ BULK

Package Type	Units					Dimension (unit mm3)		
	Units/Bag /	Bags/Inner Box /	Units/Inner Box /	Inner Boxes/Outer Box /	Units/Outer Box /	Bag	Inner Box	Outer Box
TO-92LM	1,000	8	8,000	5	40,000	135×190	237×172×102	560×245×195

/ AMMO

Package Type	Units					Dimension (unit mm3)	
	Units/tape /	Tape/Inner Box /	Rows/Inner Box /	Inner Boxes/Outer Box /	Units/Outer Box /	Inner Box	Outer Box
TO-92LM	2,500	1	100	10	25,000	328×230×42	480×346×235 547×407×268

/ Notices