

/ Descriptions

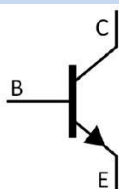
TO-92 NPN

/ Features

KTA 200

/ Applications

/ Equivalent Circuit



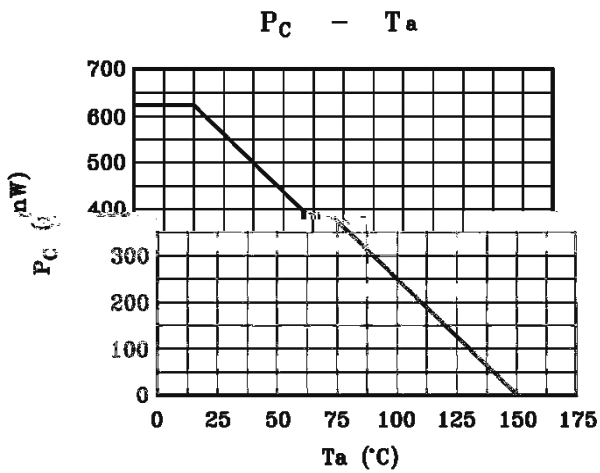
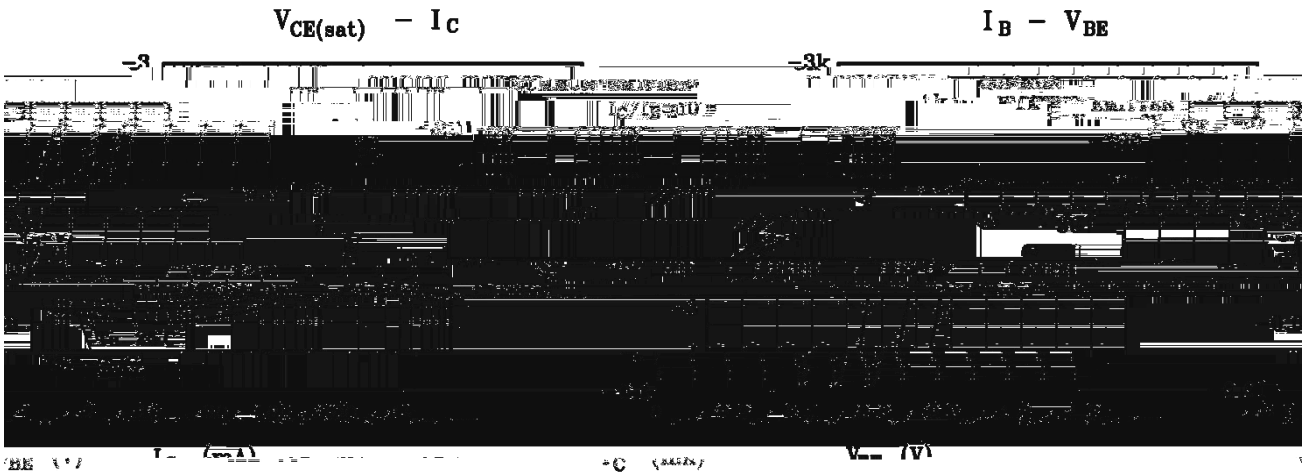
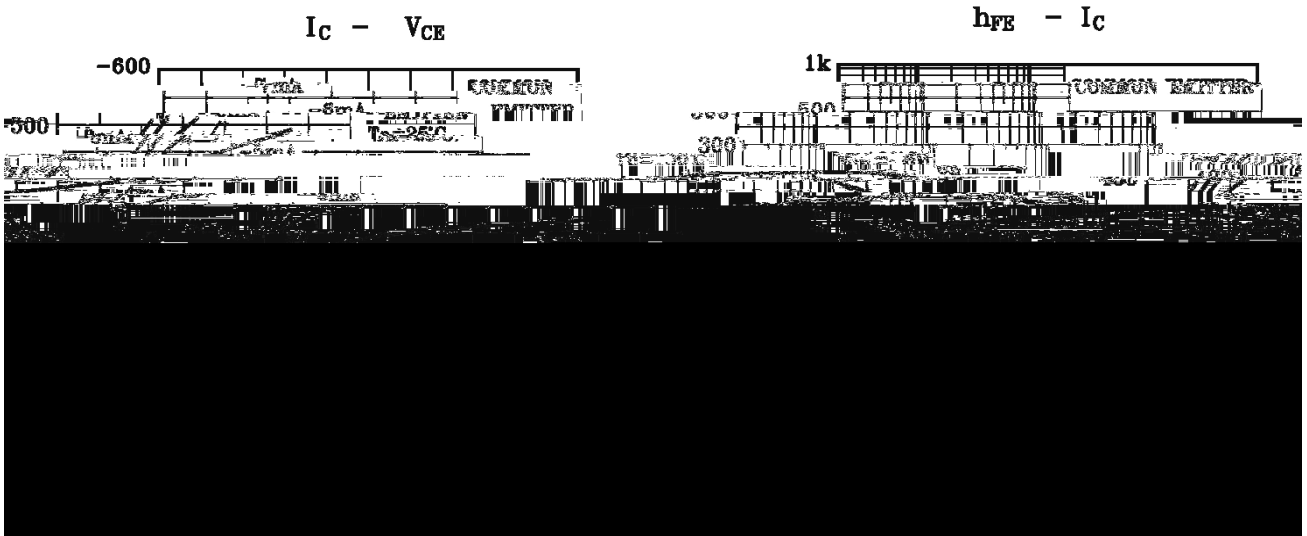
/ Pinning



/ hFE Classifications & Marking

						μ
						μ

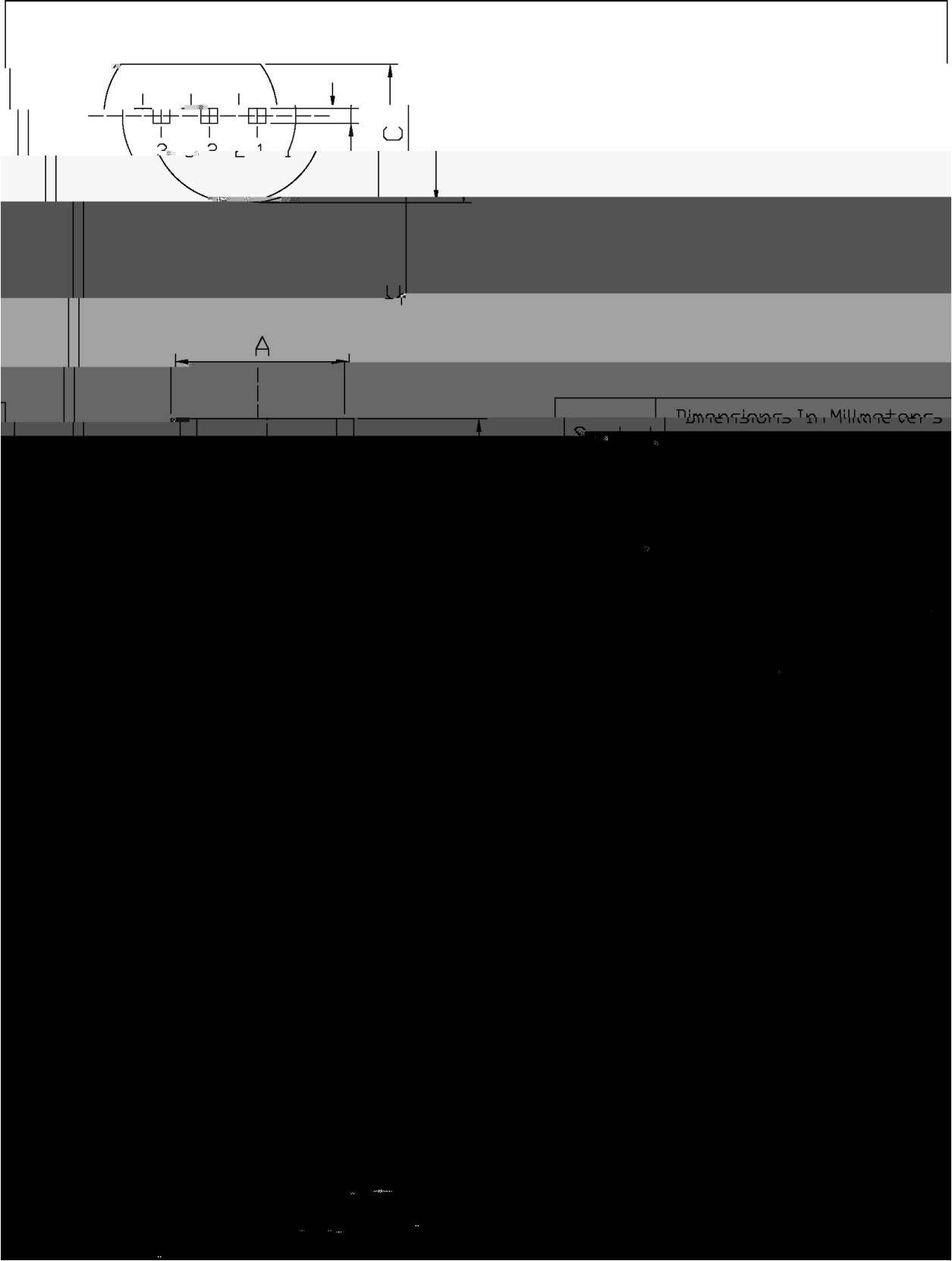
/ Electrical Characteristic Curve



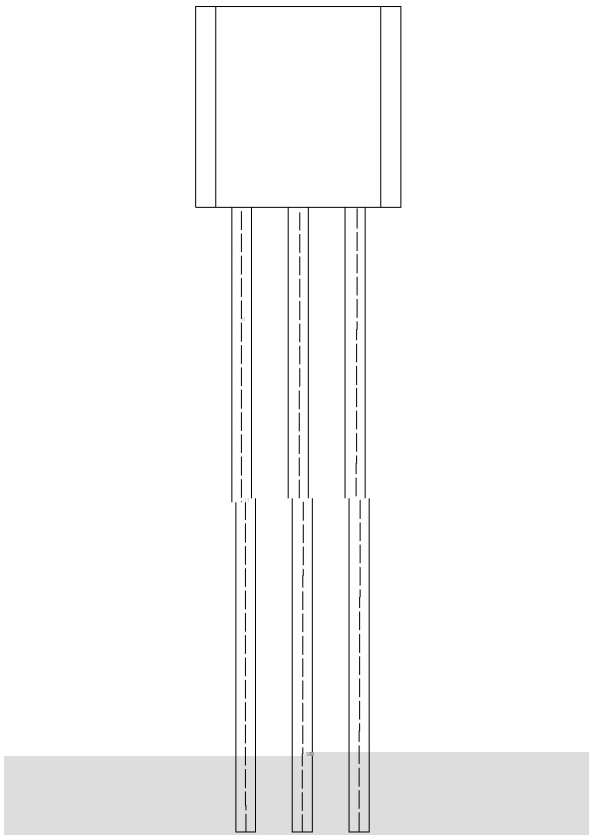
/ Package Dimensions

T0-92

Unit: mm



/ Marking Instructions



BR:
C200
Y: h_{FE}

() / Temperature Profile for Dip Soldering(Pb-Free)

