

/ Descriptions

TO-263 Voltage Regulator in a TO-263 Plastic Package.

/ Features

1.5A, 1.2 37V
3-Terminal regulators ,output current in excess of 1.5 A, output voltage adjustable over a 1.2-37V.

/ Applications

Voltage Regulator.

/ Equivalent Circuit or Application Circuit



/ Pinning



PIN1 ADJ PIN 2 4 OUT PIN 3 IN

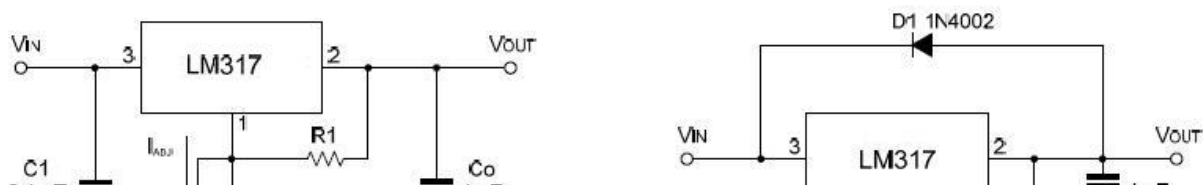
/ Marking

See marking instructions.

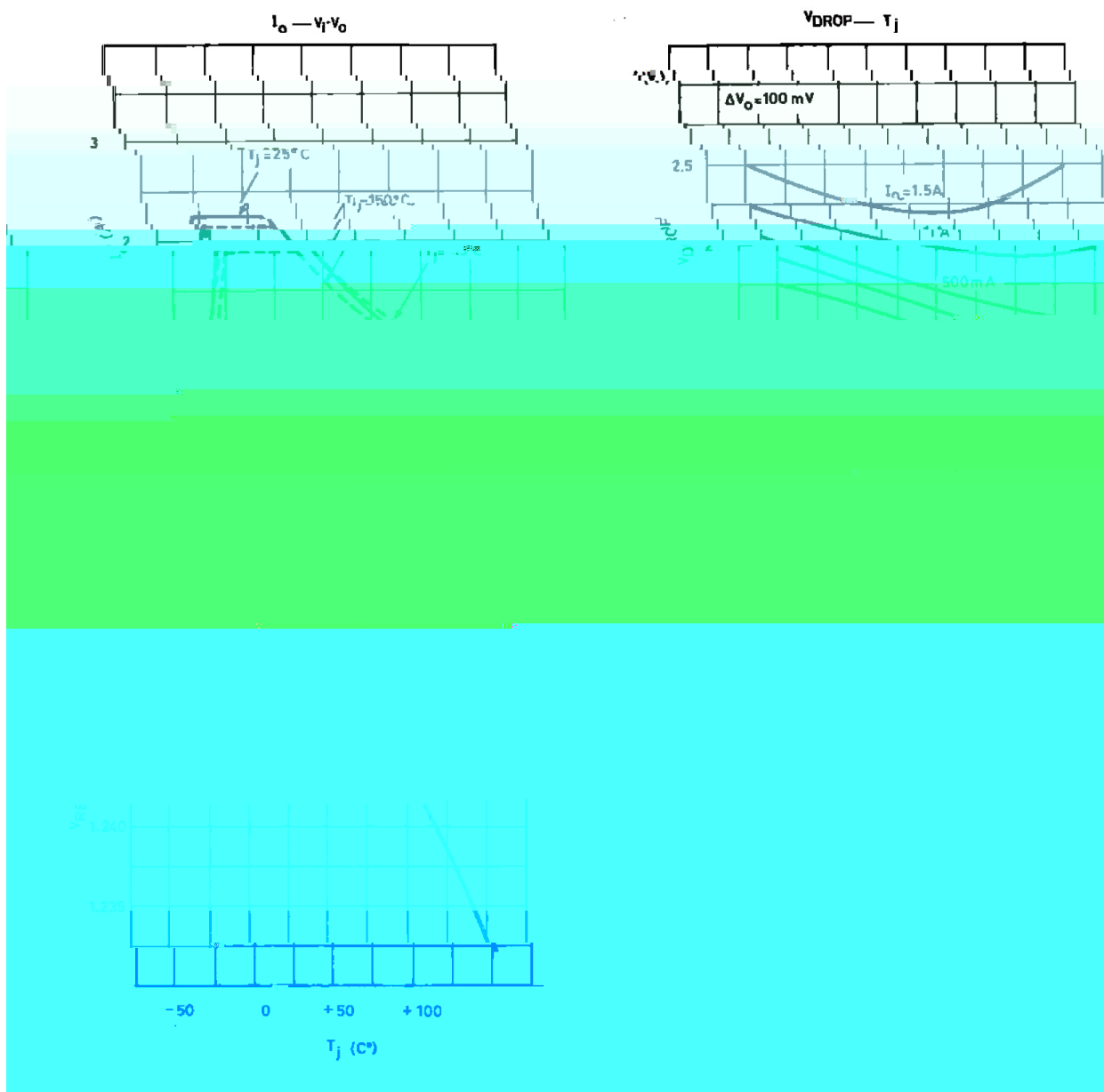
Parameter	Symbol	Rating	Unit
Input voltage	V_{i-o}	40	V
Output current	I_o	Internally Limited	
Operating virtual Junction temperature	T_J	0 125	
Power Dissipation	P_{tot}	Internally Limited	
Storage temperature range	T_{stg}	-55 150	

Parameter	Symbol	Test Conditions	Min	Typ	Max	Unit
Output voltage	V_o	$T_j=25$		0.01	0.04	%/V
		$I_o=5mA$ to 1A $V_i=-20V$ to -7V		0.02	0.07	%/V
Load Regulation	V_o	V_o 5V I_o I_o $T_j=25$				

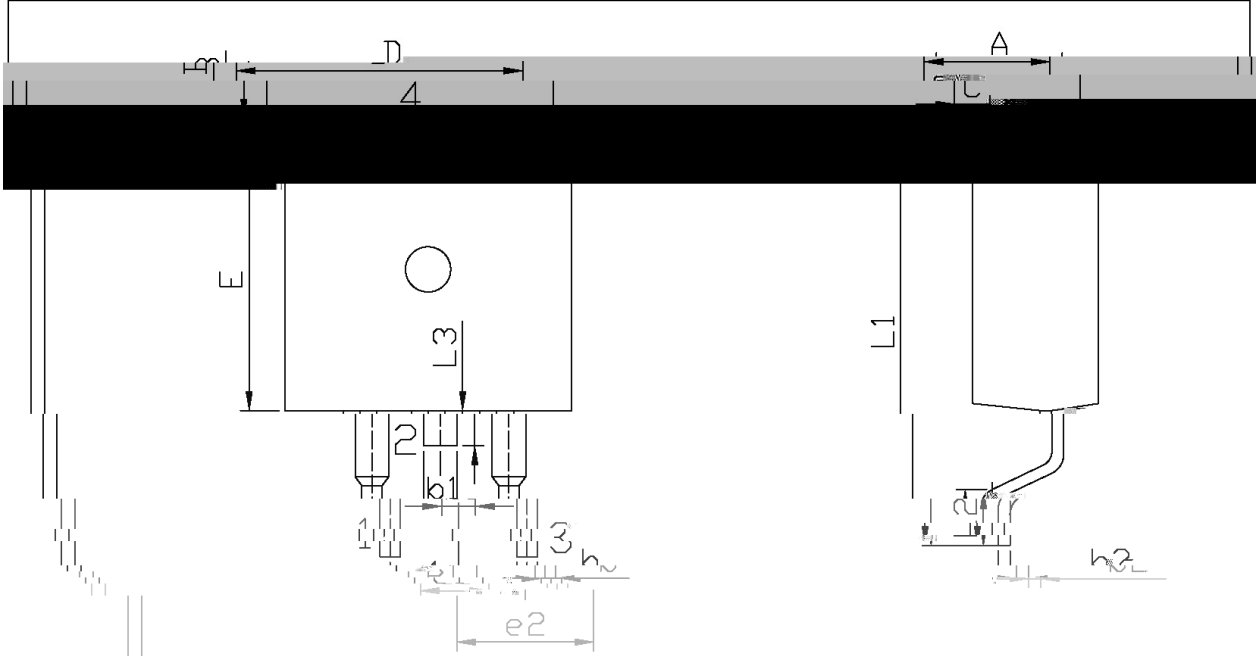
/ Equivalent Circuit



/ Electrical Characteristic Curve



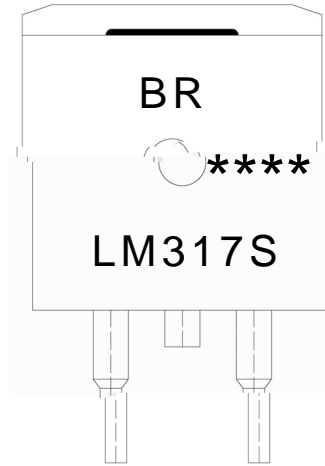
/ Package Dimensions



单位: mm

Dimensions	Min	Max	Dimensions	Min	Max
a	0.00	0.10	A	4.30	4.70
b	2.34	2.74	B	1.00	1.40
c	15.00	16.00	b1	1.15	1.35
d	9.80	10.20	D	9.80	10.20

/ Marking Instructions



BR

LM317S

Note:

BR: Company Code.

LM317S: Product Type.

****: Lot No. Code, code change with Lot No.

