

5 é / Descriptions

9 5 6 .> // x E * 3 y Ý Dual Operational Amplifiers in a SOP-8 Plastic Package.

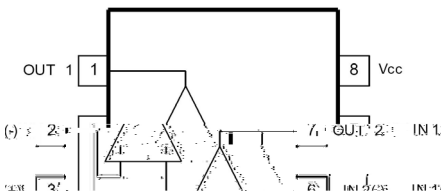
α a / Features

~ B % y " " äm/k~ßÝ +v 9" y J(kW 98 !g<)) # < d kÿp»
% 98 N " u kÿß 98 ÝyR d<ll <k 9 PW ð
Internally frequency compensated for unity gain, Large DC voltage gain : 100dB, Wide operating supply range (V_{cc}=3V~36V), Input common mode voltage includes ground, Large output voltage swing: From 0 to V_{cc}-1.5V, Power drain suitable for battery operation.

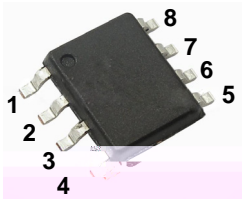
Đ ÷ / Applications

9 n ß y Ý k + v " % † y æ ~ n ~ y Ý ð
Application areas include transducer amplifier, DC gain blocks and all the conventional OP amp circuits.

Ã W] Ô . / Equivalent Circuit



• Ô - æ / Pinning



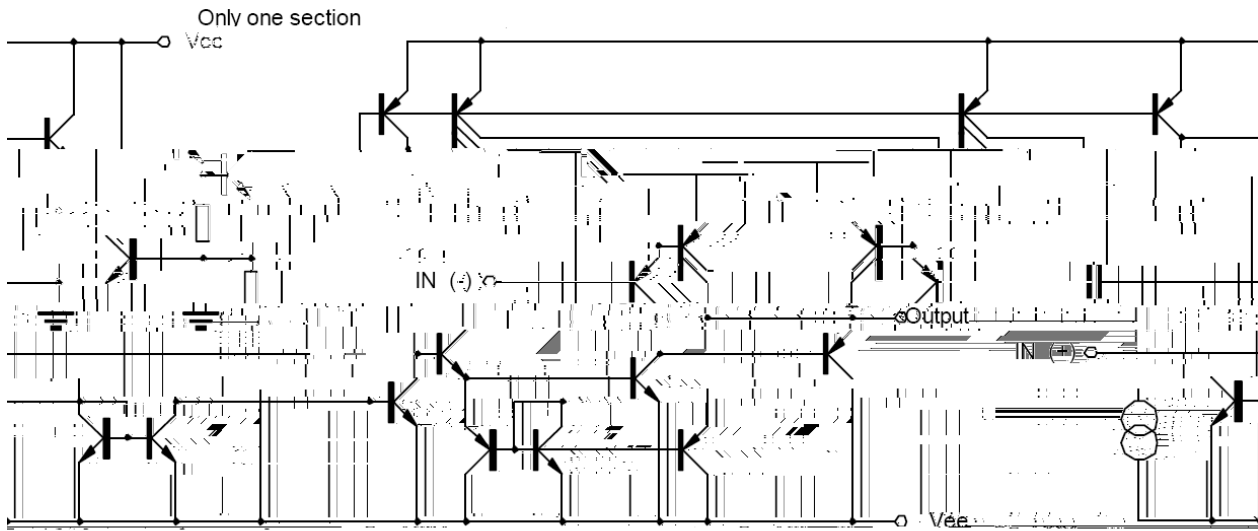
6 / 4 ~ B | ð PIN See Equivalent Circuit.

, M V / Marking

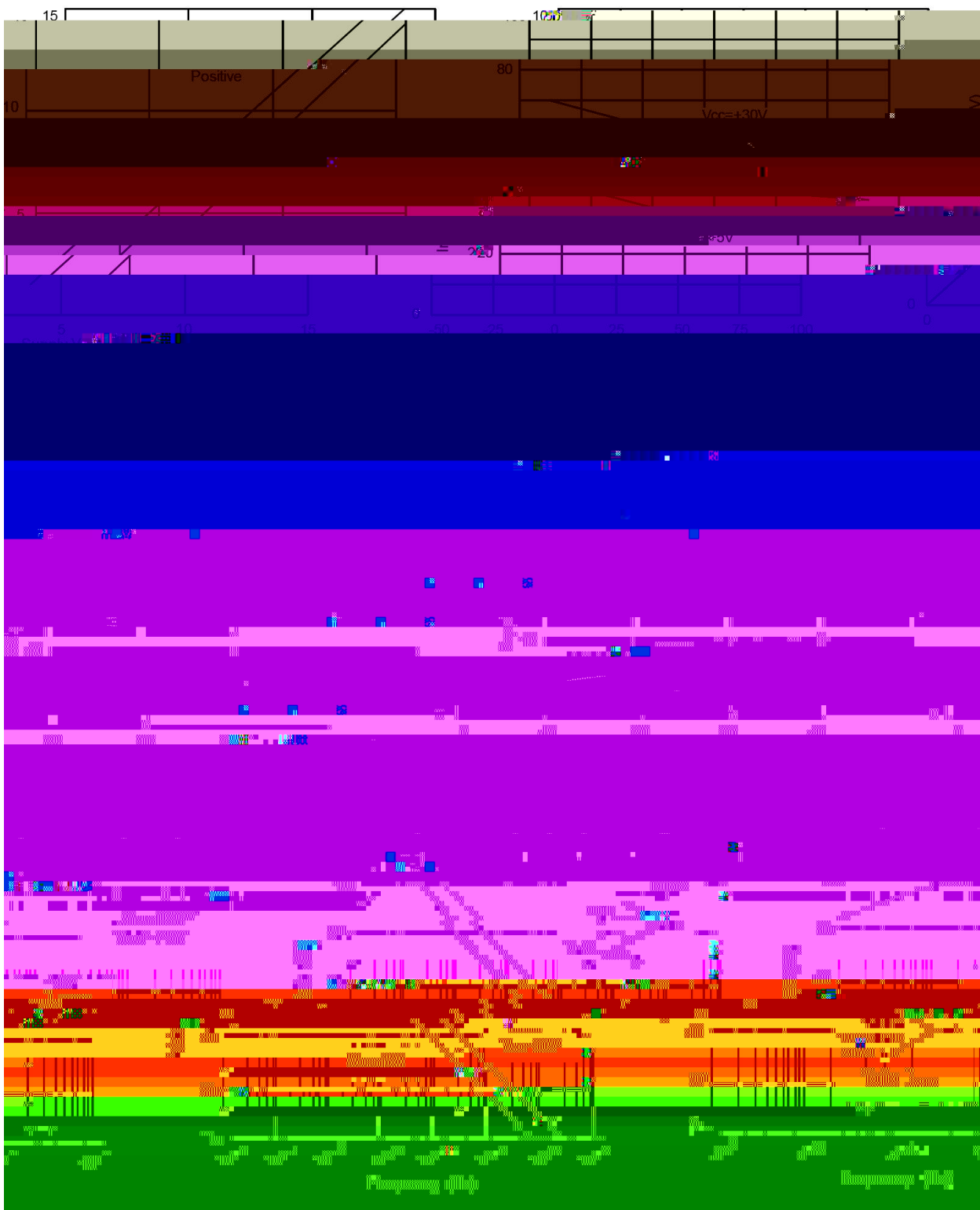
- ~ " ¢ / See Marking Instructions

LM358
Rev.J Oct.-2018

< Æ ¢ / Functional Block Diagram

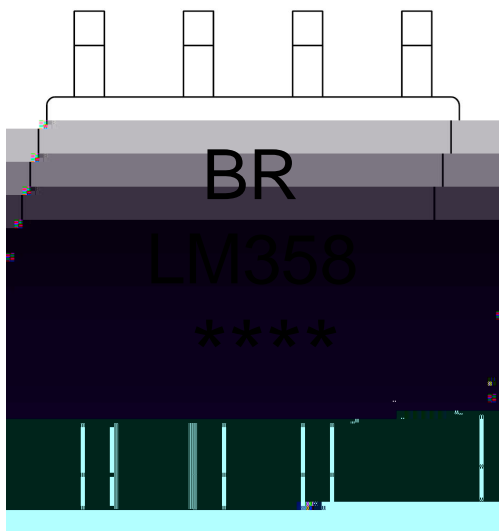


Ô ? d • Ž ¢ / Electrical Characteristic Curve



LM358
Rev.J Oct.-2018

Marking Instructions



“ φ y
BR y , [W A
2 3 y “ Z W A
y ÿD Z W A k ÿD Z J

Note:
BR: Company Code.
LM358: Product Type.
****: Lot No. Code, code change with Lot No.

LM358
Rev.J Oct.-2018