

LV20150BCT

Rev.E May.-2016

/ Descriptions

TO-263

Schottky Diode in a TO-263F Plastic Package.

/ Features

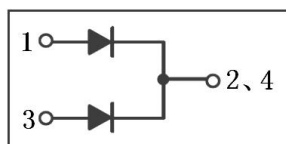
Low forward voltage drop, low power losses, High efficiency operation.

/ Applications

OR-ing DC-DC

For use in high frequency inverters, switching power supplies, freewheeling diodes, OR-ing diode, dc-to-dc converters and reverse battery protection.

/ Equivalent Circuit



/ Pinning



PIN1 Anode PIN 2 4 Cathode PIN 3 Anode

/ h_{FE} Classifications & Marking

See Marking Instructions.

LV20150BCT

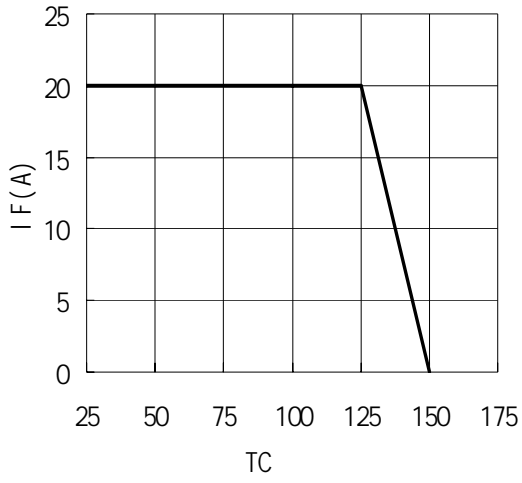
Rev.E May.-2016

Parameter	Symbol	Rating	Unit
Recurrent Peak Reverse Voltage Working Peak Reverse Voltage DC Blocking Voltage	V_{RM} V_{RSM} V_{DC}	150	V
RMS Voltage	V_{RMS}	105	V
Average Rectified Forward Current	$I_{F(AV)}$	2× 10	A
Non Repetitive Peak Surge Current	I_{FSM}	120	A
Thermal Resistance Junction to Case	R_{Jc}	5.0	/W
Junction and Storage Temperature Range	T_j T_{stg}	-55 +150	

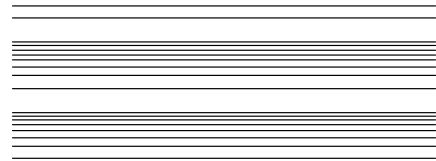
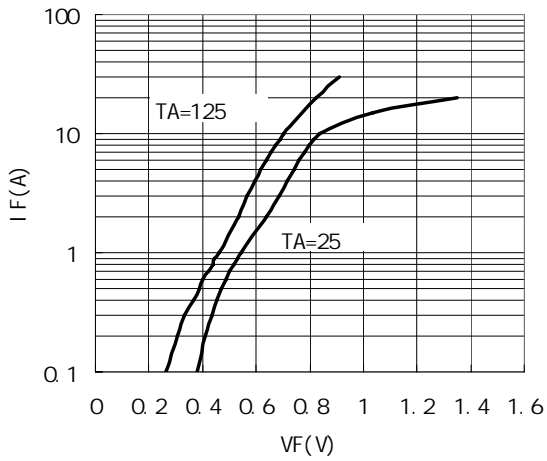
Parameter	Symbol	Test Conditions	Min	Typ	Max	Unit
Breakdown Voltage	V_{BR}	$I_R=1mA(T_a=25^\circ C)$	150			V
		$I_F=5A(T_a=25^\circ C)$		0.74		V
Forward Voltage	V_F	$I_F=10A(T_a=25^\circ C)$				V

/ Electrical Characteristic Curve

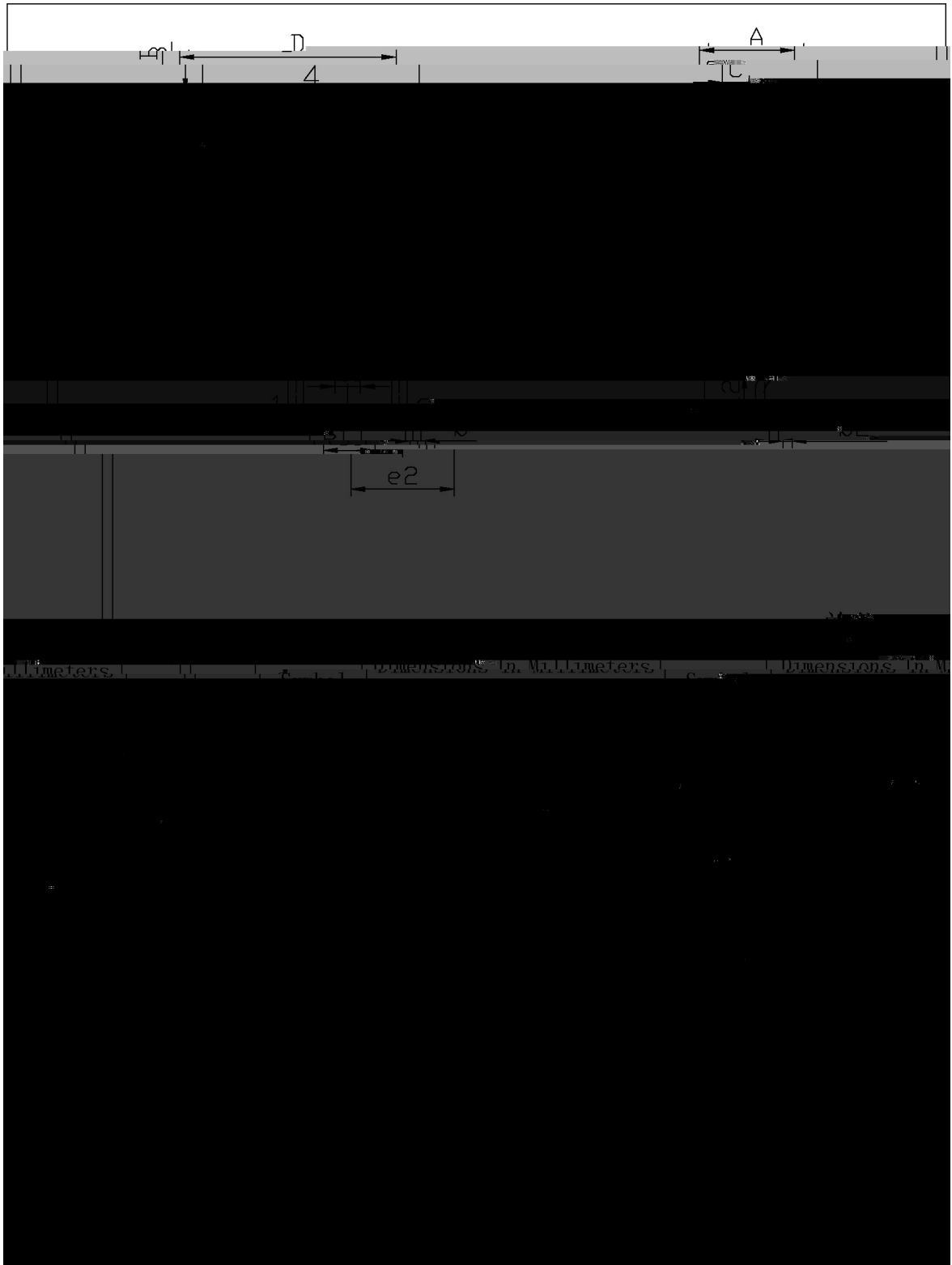
IF - TC



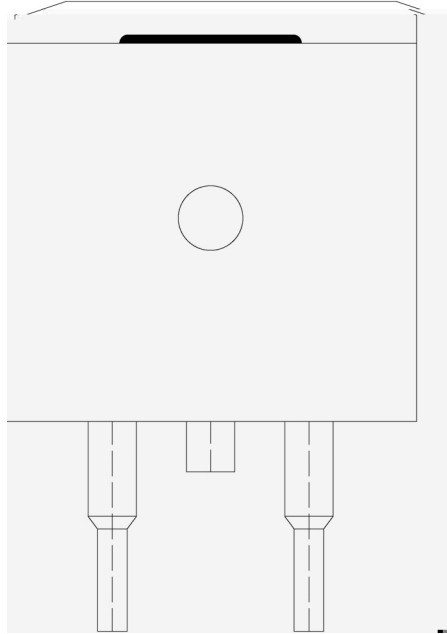
IF - VF



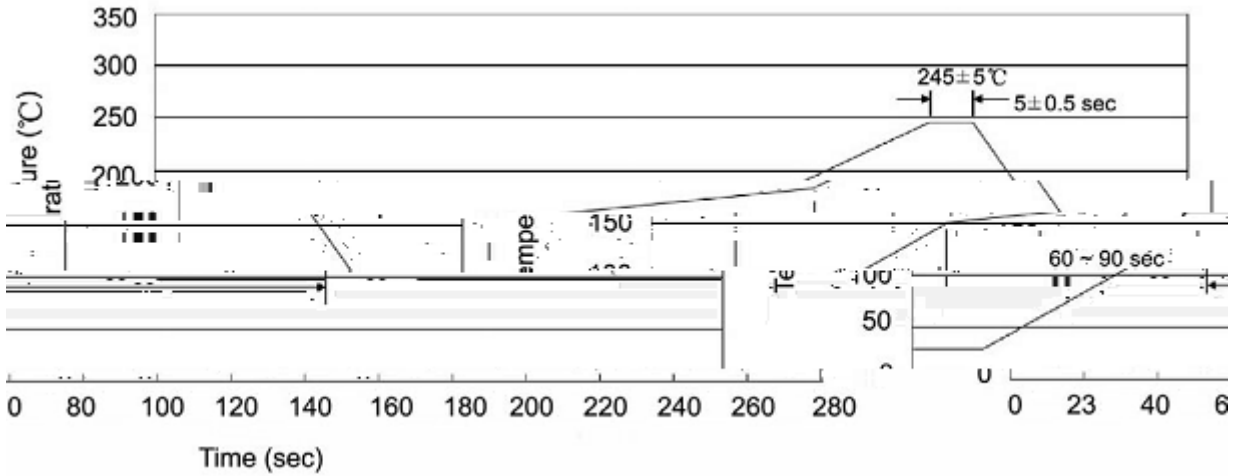
/ Package Dimensions



/ Marking Instructions



() / Temperature Profile for IR Reflow Soldering(Pb-Free)



Note:

- | | | | | | |
|---|-------|-----|-----------|----------|---|
| 1 | 25 | 150 | 60 | 90sec; | 1.Preheating:25~150 , Time:60~90sec. |
| 2 | 245±5 | | 5±0.5sec; | | 2.Peak Temp.:245±5 , Duration:5±0.5sec. |
| 3 | | | 2 | 10 /sec. | 3. Cooling Speed: 2~10 /sec. |

/ Resistance to Soldering Heat Test Conditions

260±5 10±1 sec. Temp.:260±5 Time:10±1 sec

/ Packaging SPEC.

/ REEL

Package Type	Units					Dimension (unit mm ³)		
	Units/Reel	Reels/Inner Box	Units/Inner Box	Inner Boxes/Outer Box	Units/Outer Box	Reel	Inner Box	Outer Box
TO-263	800	1	800	5	4,000	13 ×24	360×360×50	385×257×392

/ TUBE

Package Type	Units			Dimension (unit mm ³)
	Units/Tube	Tubes/Inner Box	Units/Inner Box	