

Rev.F Mar.-2016

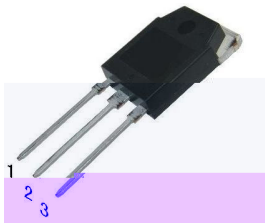
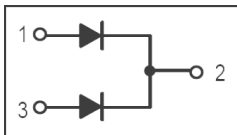
TO-3P

Schottky Barrier Diode in a TO-3P Plastic Package.

Low forward voltage drop, low power losses, High efficiency operation.

OR-ing DC-DC

For use in high frequency inverters, switching power supplies, freewheeling diodes, OR-ing diode, dc-to-dc converters and reverse battery protection.

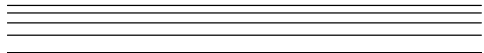
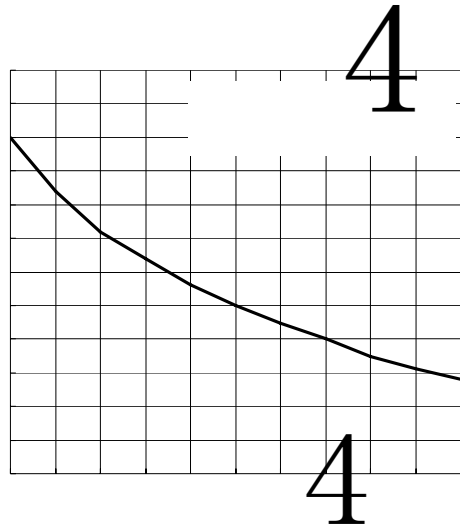


PIN1 Anode PIN 2 Cathode PIN 3 Anode

See Marking Instructions.

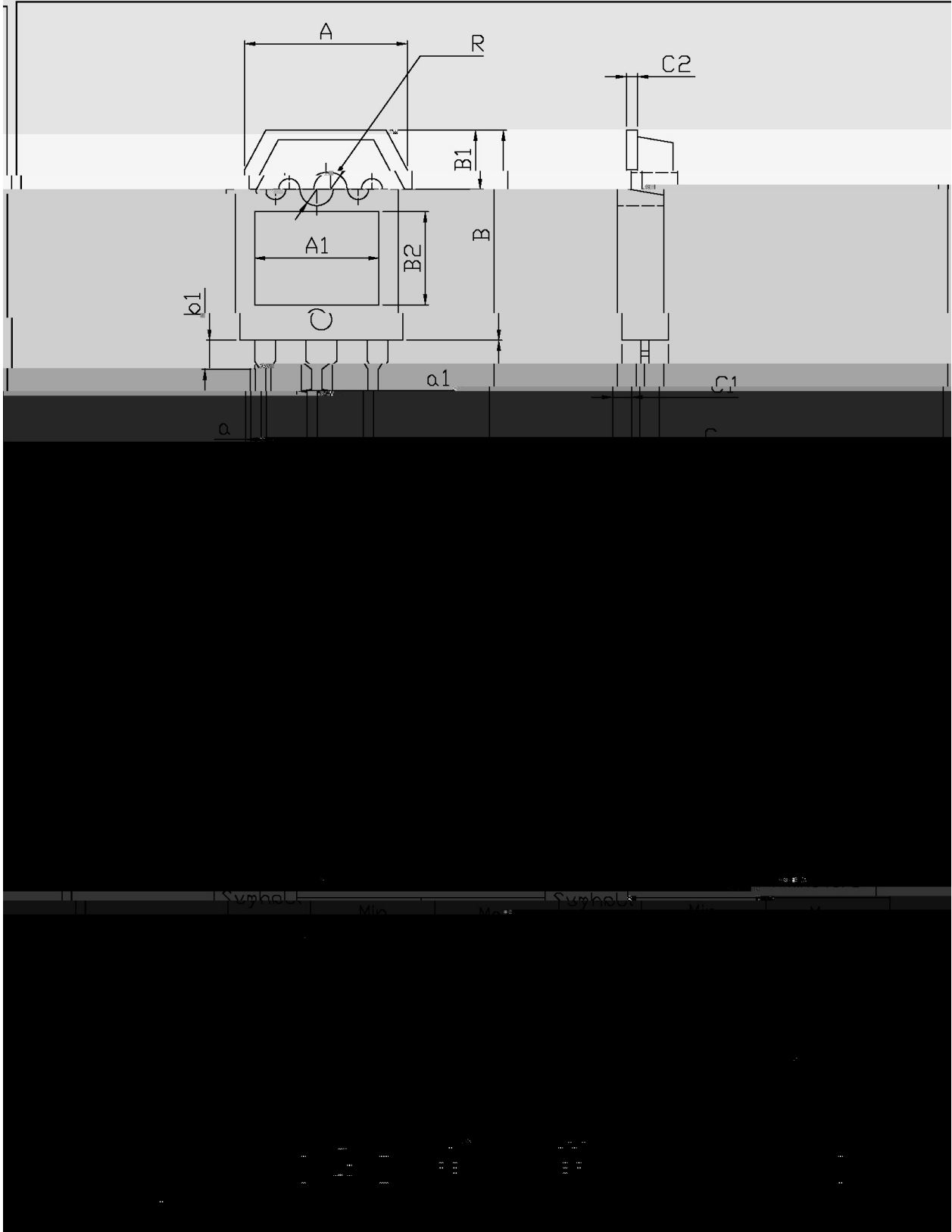
Parameter	Symbol	Rating	Unit
Repetitive peak reverse voltage	V_{RRM}	45	V
Average forward current	$I_{F(AV)}$	2×15	A
Non-Repetitive Peak Forward Surge Current	I_{FSM}	250	A
Thermal Resistance Junction to Ambient case	R_{Jc}	1.5	/W
Junction and Storage Temperature Range	T_j T_{stg}	-40 +150	

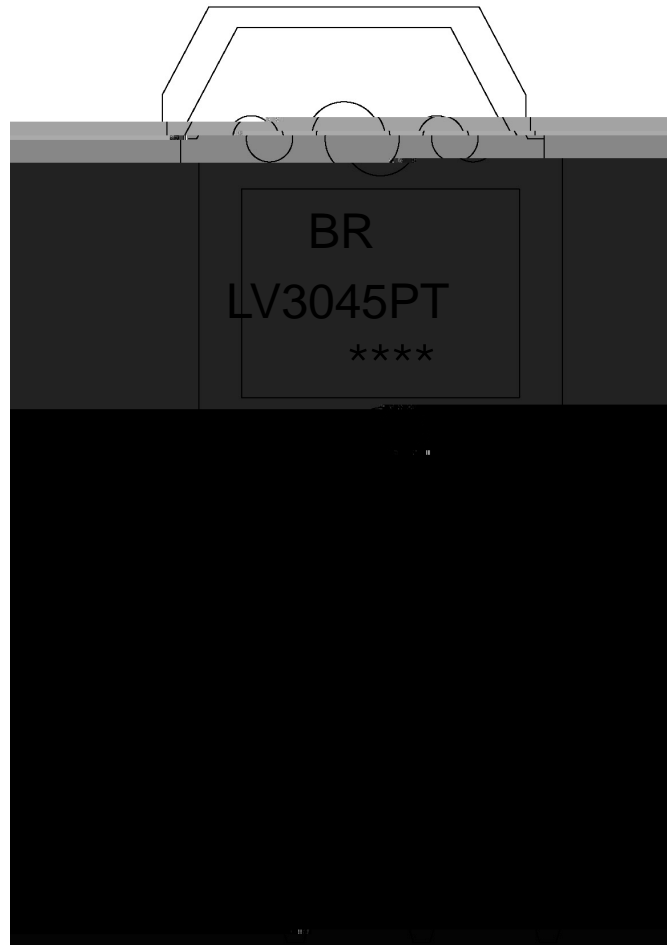
Parameter	Symbol	Test Conditions	Min	Typ	Max	Unit
Reverse Breakdown Voltage	V_{BR}	$I_R=1mA(T_a=25^\circ C)$	45			V
Forward Voltage	V_F	$I_F=5A(T_a=25^\circ C)$		0.38	0.45	V
		$I_F=15A(T_a=25^\circ C)$			0.48	0.55
		$I_F=5A(T_a=125^\circ C)$			0.28	0.35
		$I_F=15A(T_a=125^\circ C)$		0.45	0.50	V
Instantaneous Reverse Current	I_R Note 1	$\frac{200}{R}$ A				



TU-3P

单位: mm





BR

LV3045PT

Note:

BR: Company Code.

LV3045PT: Product Type.

****: Lot No. Code, code change with Lot No.

