

MB05F10-34~MB10F10-34

Rev.A Nov.-2025

/ Descriptions

1A

MBF

1A Surface Mount Glass Passivated Bridge Rectifier, MBF thin package.

/ Features

50V ~ 1000V

1A

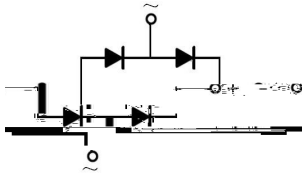
RoHS

Glass Passivated Chip Junction, Reverse Voltage:50to1000V, Forward Current:1 A, High Surge Current Capability, Low Forward Voltage Drop, Lead and body according with RoHS standard, Halogen free product.

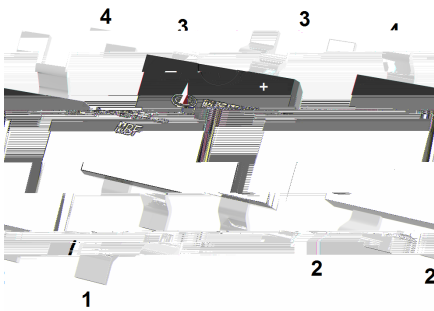
/ Applications

General purpose.

/ Equivalent Circuit



/ Pinning



PIN	DESCRIPTION
1	Input Pin (-)
2	Input Pin (+)
3	Output Anode (+)
4	Output Cathode (-)

/ Marking

See Marking Instructions.



Parameter	Rating						Unit
	MB1F 10-34	MB2F 10-34	MB4F 10-34	MB6F 10-34	MB8F 10-34	MB10F 10-34	
Maximum Recurrent Peak Voltage	100	200	400	600	800	1000	V
Maximum RMS Voltage	70	140	280	420	560	700	V
Maximum DC Blocking	100	200	400	600	800	1000	V
Maximum Average Forward Current (Note 1)	1						A
Forward Surge Current (Single Half Sine-Wave Imposed on Rated I _F (DEC Method))	30						A

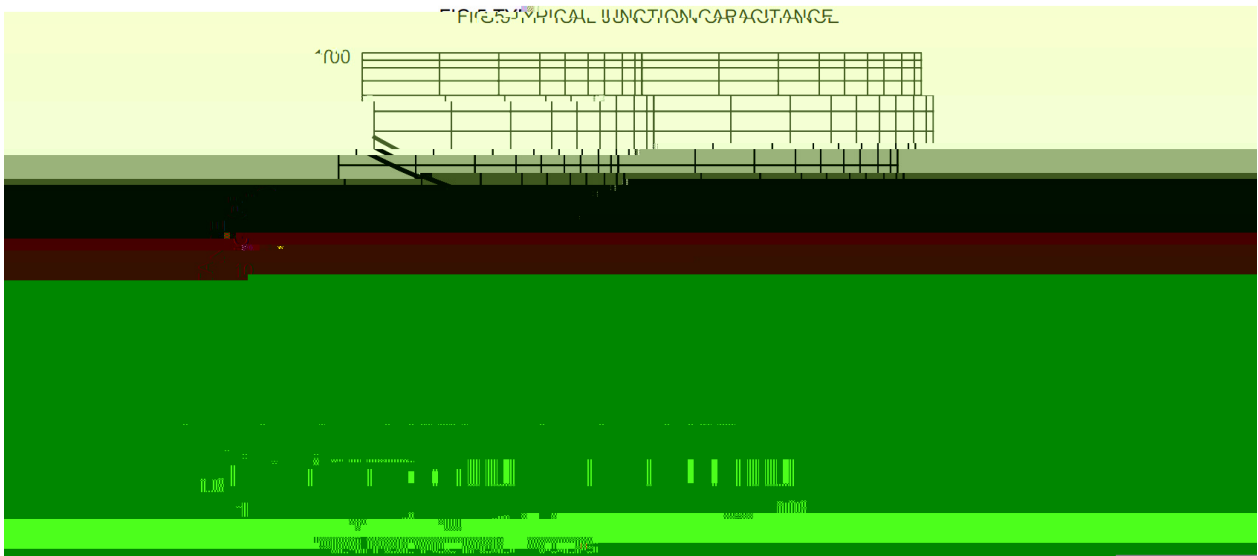
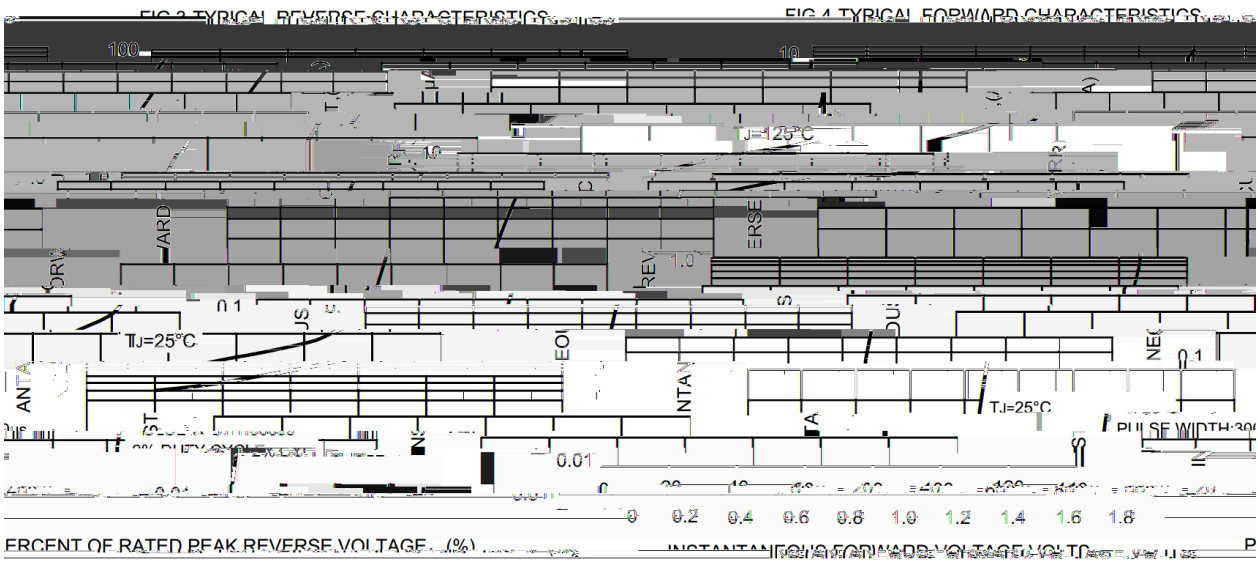
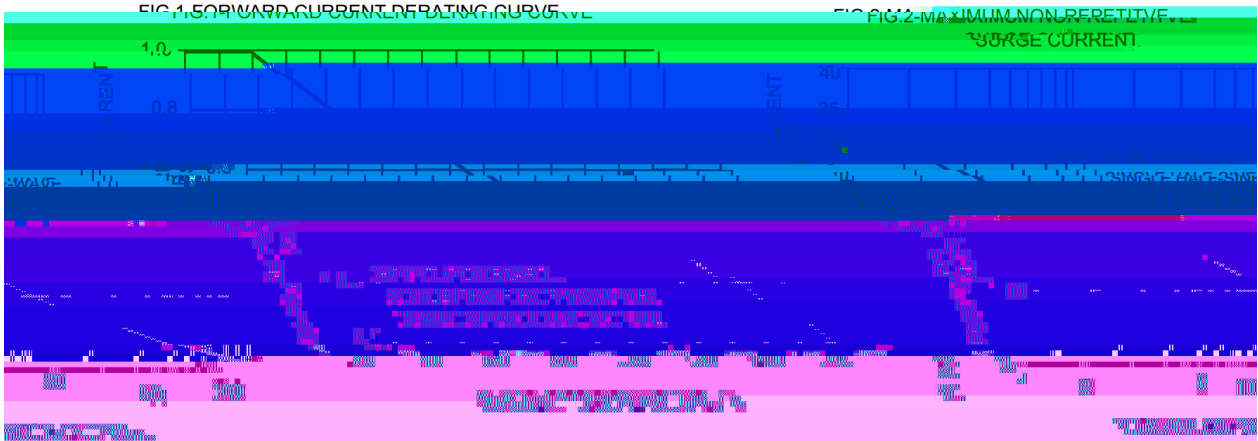
I²t Rating for Fusing(t<8.3ms)

I²t

3.7

A²²

/ Electrical Characteristic Curve



MB05F10-34~MB10F10-34

Rev.A Nov.-2025



DATA SHEET



/ Marking Instructions



MB05F

Note:

MB05F Product Type Code

**** Lot No. Code, code change with Lot No.

Marking

Type number	Marking code
MB05F10-34	MB05F
MB1F10-34	MB1F
MB2F10-34	MB2F
MB4F10-34	MB4F
MB6F10-34	MB6F
MB8F10-34	MB8F
MB10F10-34	MB10F

šWD t... •Žϕ (x/) / :KSVKXGZ[XK 6XULORK LUX /8 8KLRU] 9URJKXOTM 6

^a ϕ y

Note:

10• Ä ½ " † 150 ½180 - k ž • 60 ½