



~	· ° " °	~ · °   / fi	· ° fl ㄥ   † Ž	ž !	#
---	---------	--------------	----------------	-----	---

# MB14F~MB120F

Rev.E Jan.-2021



DATA SHEET

## / Descriptions

1.0A MBF  
1.0A Surface Mount Schottky Bridge, MBF thin package.

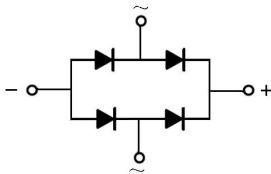
## / Features

40V~200V 1.0A  
High Surge Current Capability, Reverse Voltage: 40 to 200V, Forward Current: 1.0 A, Designed for Surface Mount Application. Halogen free product.

## / Applications

General purpose.

## / Equivalent Circuit



## / Pinning



## / Marking

See Marking Instructions.

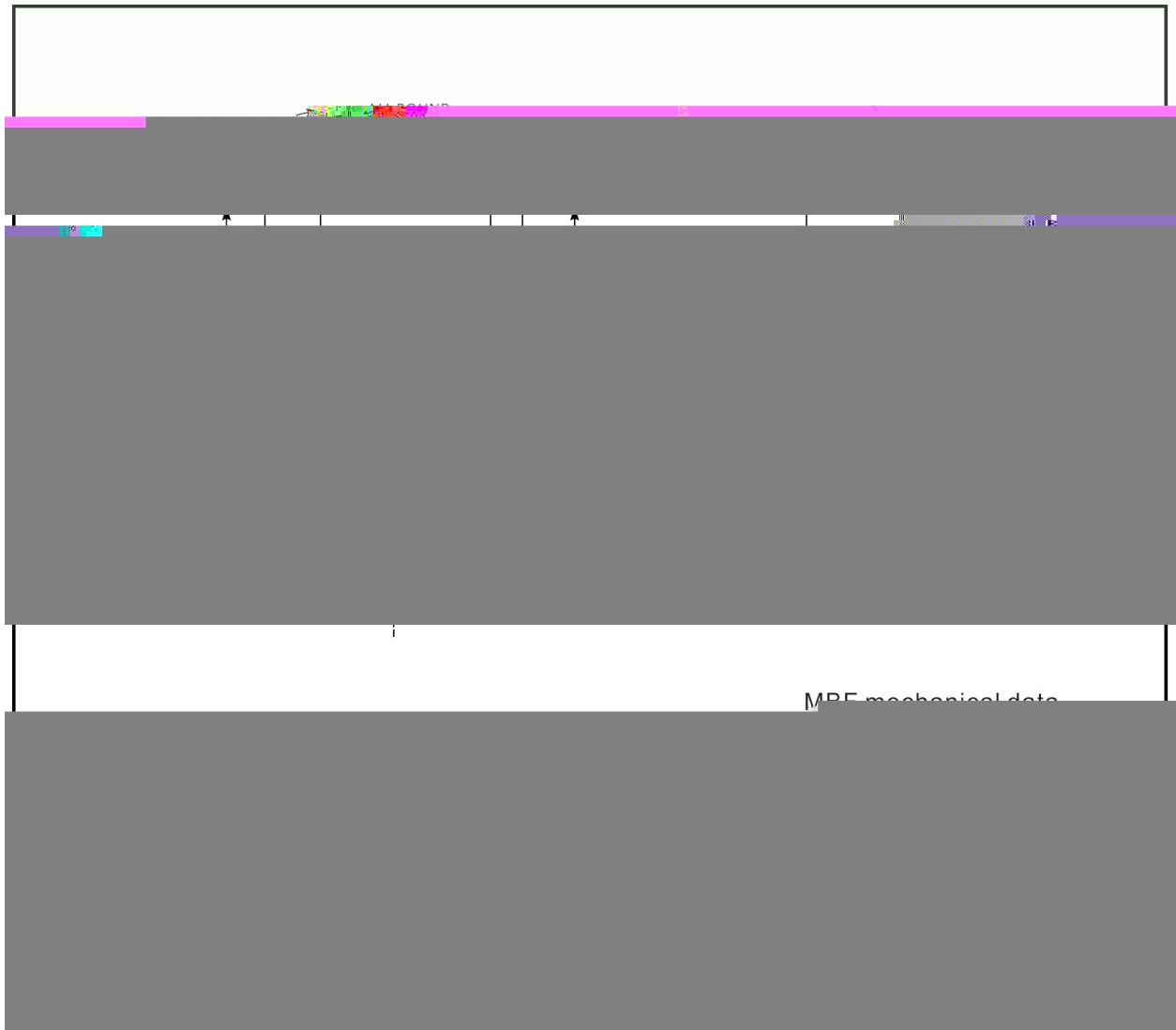






/ Package Dimensions

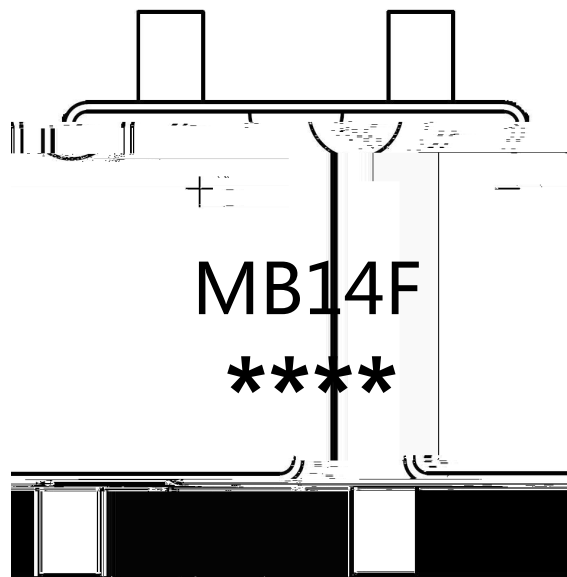
MBF







/ Marking Instructions



MB14F

\*\*\*\*

1 \*

3 \*

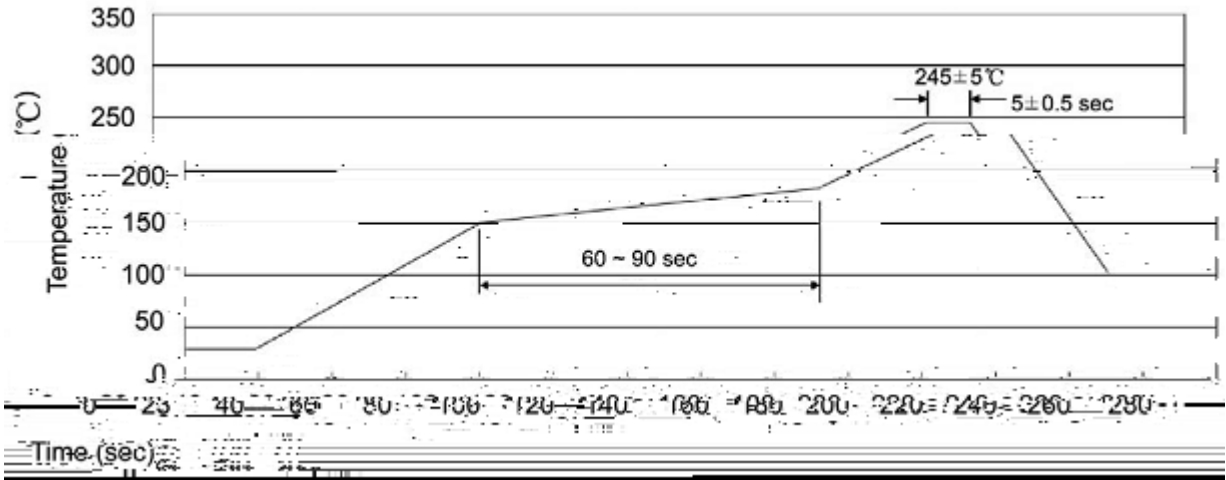
Note:

MB14F      Product Type Code

\*\*\*\*      Lot No. Code    The 1st \* means:YM Code    The last 3 \* means:little Lot No Code



( ) / Temperature Profile for IR Reflow Soldering(Pb-Free)



Note:

- |   |       |     |    |           |                                       |
|---|-------|-----|----|-----------|---------------------------------------|
| 1 | 25    | 150 | 60 | 90sec;    | 1.Preheating:25~150°C, Time:60~90sec. |
| 2 | 245±5 |     |    | 5±0.5sec; | 2.Peak Temp.:245±5°C,                 |