

**/ Descriptions**

1.0A MBS  
1.0A Surface Mount Schottky Bridge Rectifier, MBS package.

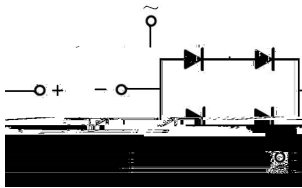
**/ Features**

Reverse Voltage: 40V to 200V, Forward Current: 1.0A, High Surge Current Capability, Designed for Surface Mount Application. Halogen free product.

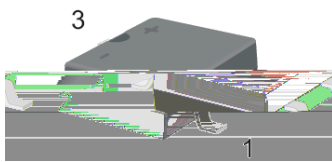
**/ Applications**

General purpose.

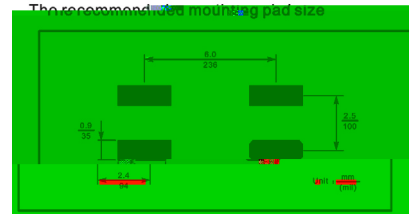
**/ Equivalent Circuit**



**/ Pinning**



PIN	DESCRIPTION
1	Input Pin (-)
2	Input Pin (+)
3	Output Anode (+)



**/ Marking**

See Marking Instructions.

# MB14S~MB120S

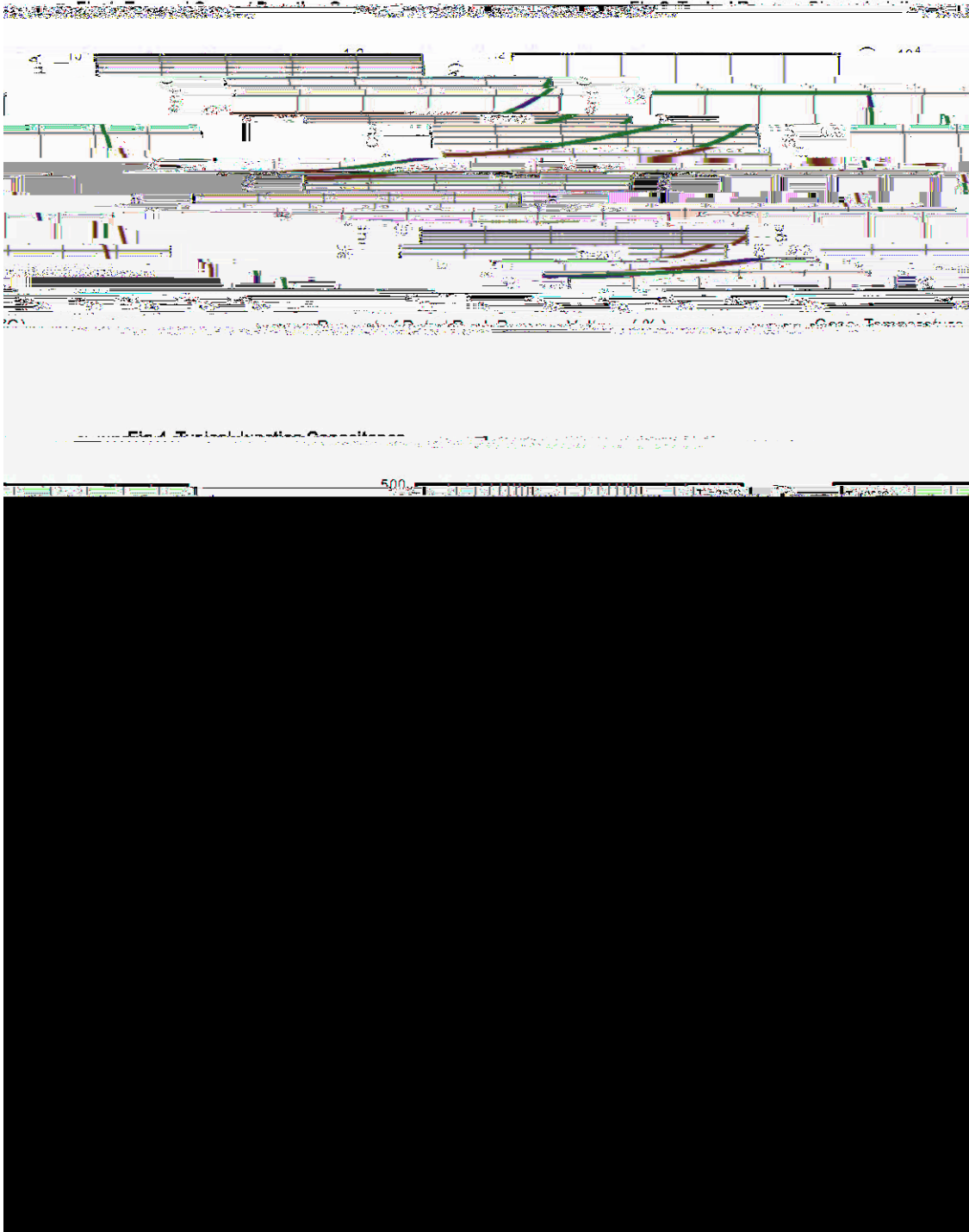
Rev.A Dec.-2017



DATA SHEET

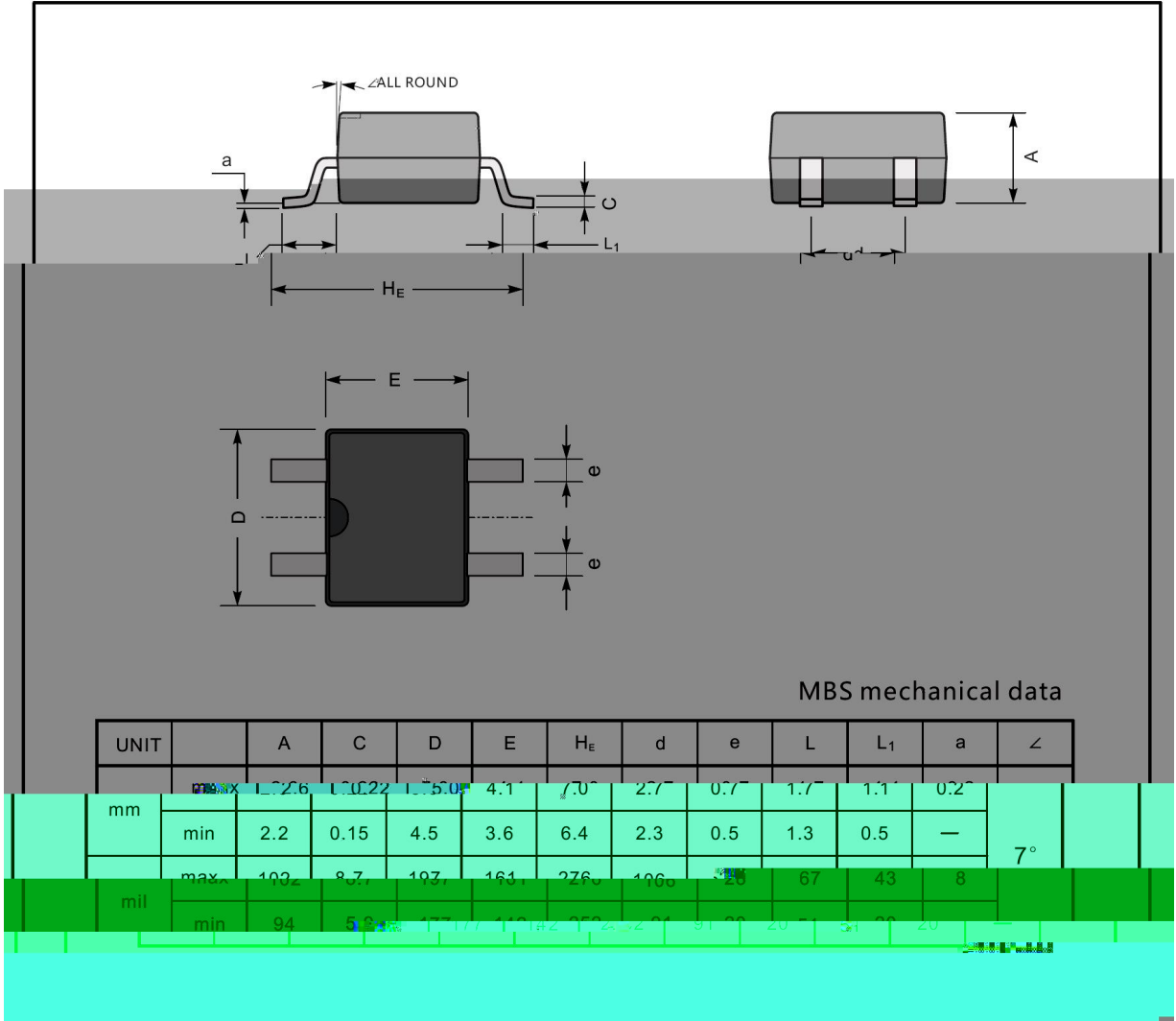
Parameter	Symbol	Rating						Unit
		MB14S	MB16S	MB18S	MB110S	MB115S	MB120S	
Maximum Repetitive Peak Reverse Voltage	$V_{RRM}$	40	60	80	100	150	200	V
Maximum RMS voltage	$V_{RMS}$	28	42	56	70	105	140	V
Maximum DC Blocking Voltage	$V_{DC}$	40	60	80	100	150	200	V
Maximum Average Forward Rectified Current at $T_c = 100$	$I_{F(AV)}$	1.0						A
Peak Forward Surge Current 8.3 ms Single Half Sine Wave Superimposed on Rated Load (JEDEC Method)	$I_{FSM}$	40			30			A
Typical Junction Capacitance <small>Note1</small>	$C_j$	110	80					pF
Typical Thermal Resistance <small>Note2</small>	$R_{\theta JA}$	100						/W
Operating Junction Temperature Range	$T_j$							

/ Electrical Characteristic Curve

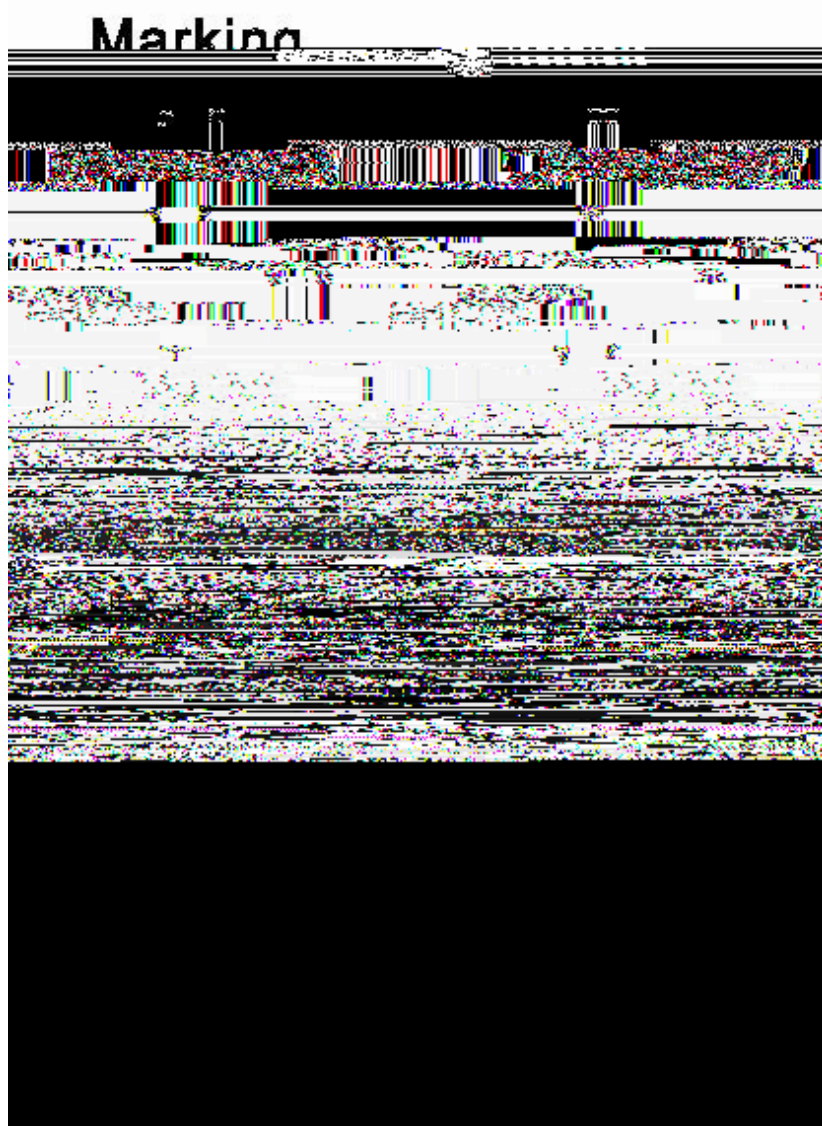


/ Package Dimensions

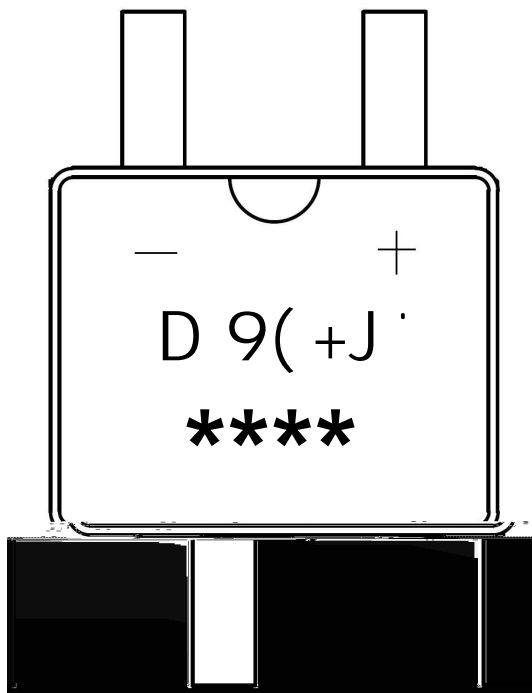
MBS



/ Marking Instructions



/ Marking Instructions



D 9(+J) Product Type Code  
\*\*\*\*\* Lot No. Code ( ) \*

Note:

D 9(+J) Product Type Code

\*\*\*\*\* Lot No. Code The 1st means:YM Code The last 3 means:little Lot  
No Code

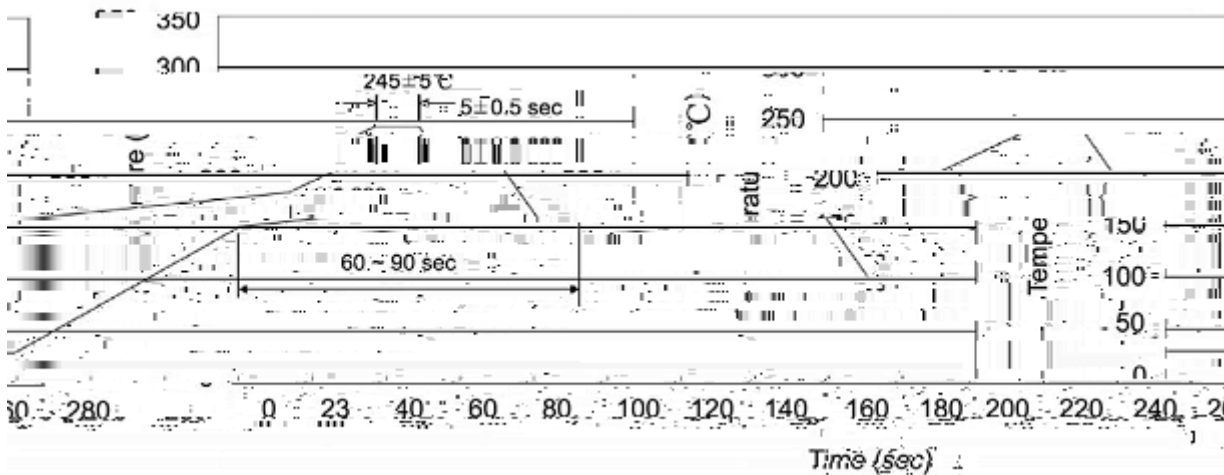
# MB14S~MB120S

Rev.A Dec.-2017



DATA SHEET

( ) /



Note:

1      25 150      60 90sec;

1.Preheating:25~150