

**MBRB2045CT**

Rev.E May.-2016

**DATA SHEET**

**/ Absolute Maximum Ratings(Ta=25 )**

Parameter	Symbol	Rating	Unit
Peak Repetitive Reverse Voltage Working Peak Reverse Voltage DC Reverse Voltage	$V_{RRM}$ $V_{RWM}$ $V_{DC}$	45	V
RMS Reverse Voltage	$V_{RMS}$	31.5	V
Average forward rectified Current	$I_{F(AV)}$	2× 10	A
Non Repetitive Peak Surge Current	$I_{FSM}$	200	A
Thermal Resistance Junction to Case	$R_{Jc}$	2.2	/W
Junction and Storage Temperature Range	$T_j T_{stg}$	-55~+150	

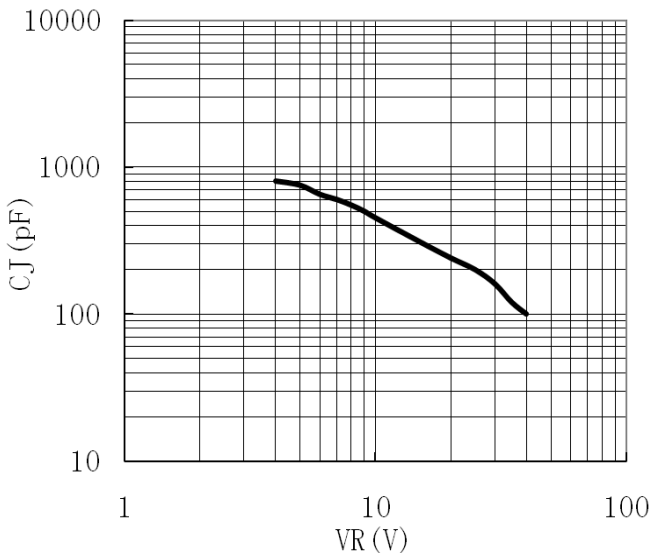
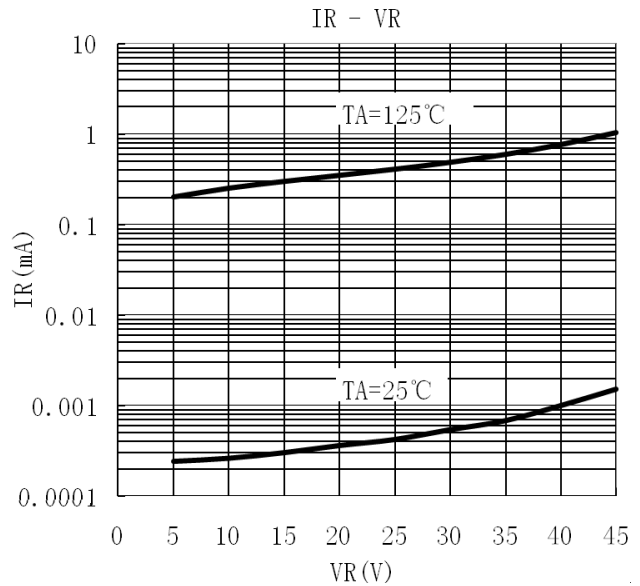
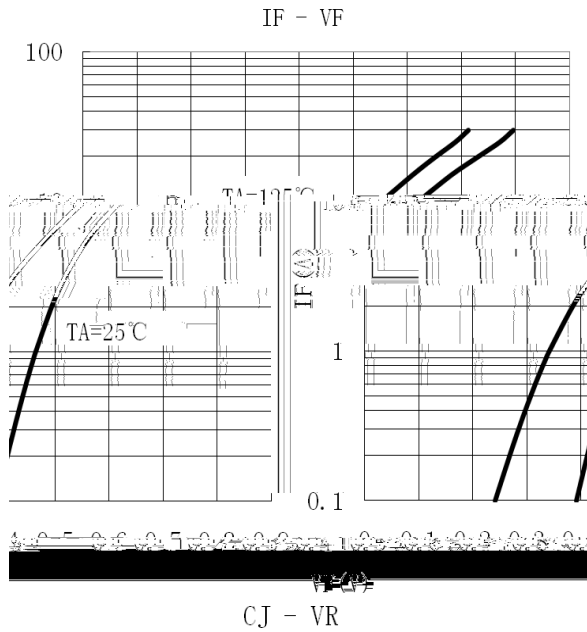
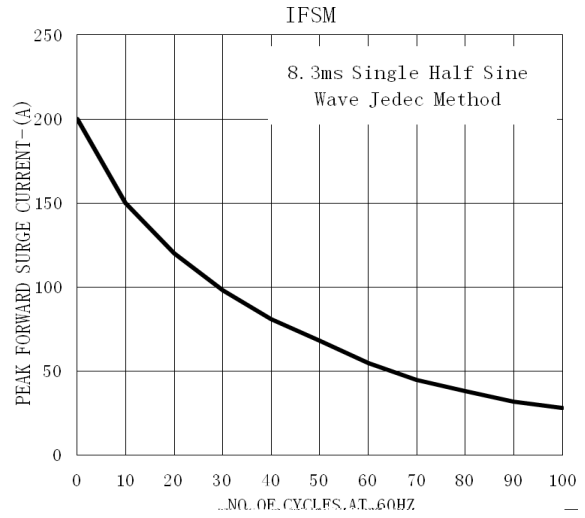
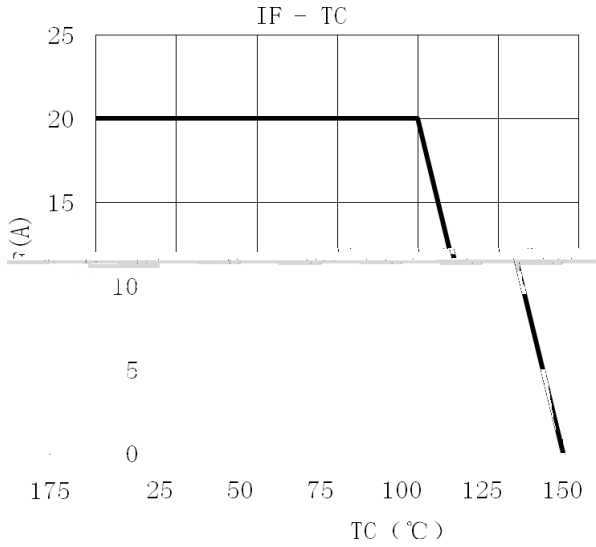
**/ Electrical Characteristics(Ta=25 )**

Parameter	Symbol	Test Conditions	Min	Typ	Max	Unit
Reverse Voltage	$V_{(BR)R}$	$I_R = 1mA$ $T_a = 25$	45			V
Peak Forward Voltage	$V_{FM}$	$I_F = 5.0A$ $T_a = 25$			0.60	V
		$I_F = 5.0A$ $T_a = 125$			0.50	V
		$I_F = 10A$ $T_a = 25$			0.70	V
		$I_F = 10A$ $T_a = 125$			0.60	V
Instantaneous Reverse Current	$I_R$ Note 1	$V_R = 45V$ $T_a = 25$			100	uA
		$V_R = 45V$ $T_a = 125$			15	mA

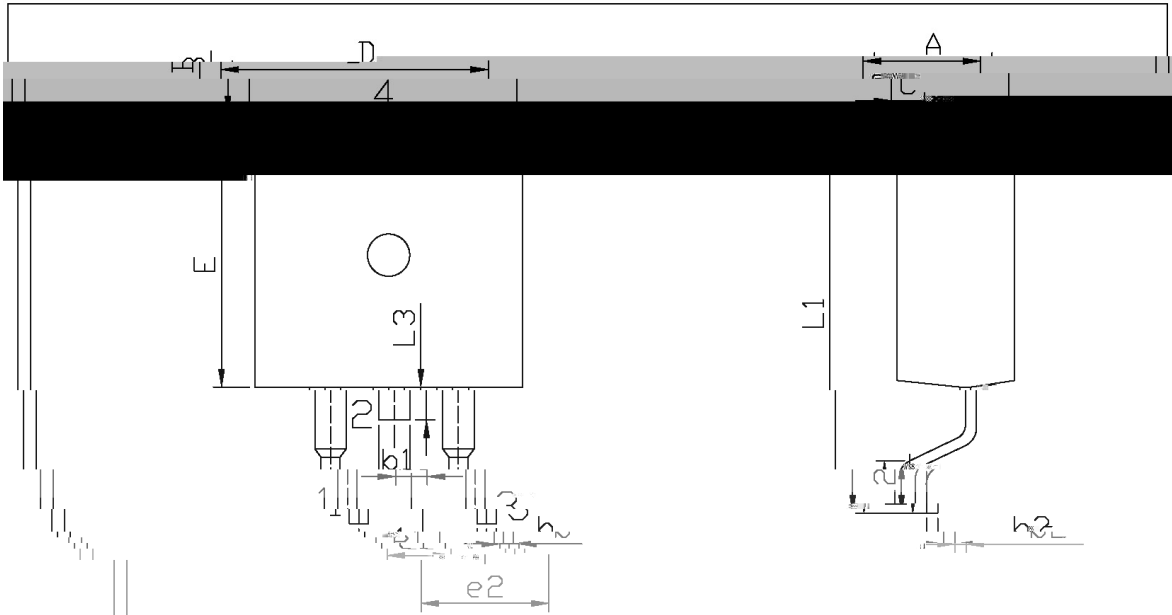
/Notes

1. /Short duration pulse test used to minimize self-heating effect.
2. / Unless otherwise noted, values for the parameters of a single chip.

**/ Electrical Characteristic Curve**



**/ Package Dimensions**



单位: mm

Dimensions in Millimeters

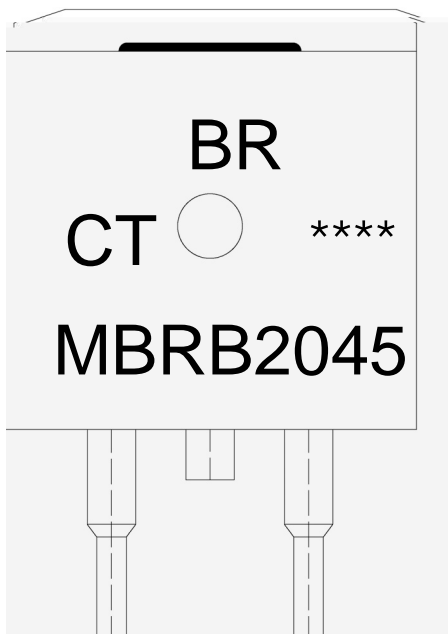
Max	Min	Max	Min
0.10	4.30	4.70	0.00
2.74	1.00	1.40	2.34
5.00	0.00	0.00	0.00



# MBRB2045CT

Rev.E May.-2016

## / Marking Instructions



BR

MBRB2045

CT:

\*\*\*\*

Note:

BR: Company Code

MBRB2045: Product Type.

CT: Internal Structure

\*\*\*\*: Lot No. Code, code change with Lot No.

