

# MBRD1040

Rev.H Oct.-2024

## 5 é / Descriptions

: 5 .> / / x RK Ô´ 8 â o  
TO-252 Plastic package Schottky diode.

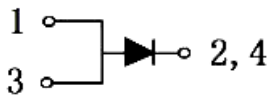
## αª / Features

z 3 g 9 k z ôk | ää k )í D }o  
Low forward voltage drop, low power losses, High efficiency operation, HF Product.

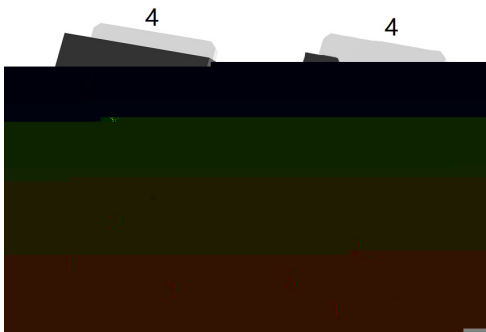
## Ð ÷ / Applications

9 ä"o z 9o Ý v v 8 â k Òv 8 â k 8 â o  
For use in low voltage, high frequency inverters, free wheeling, and polarity protection applications.

## Ã W]Ô· / Equivalent Circuit



## •Û - æ / Pinning



PIN1 yAnode

PIN 2,4 yCathode

PIN 3 yAnode

## , M V / Marking

- ~ " ¢o  
See Marking Instructions.

# MBRD1040

Rev.H Oct.-2024

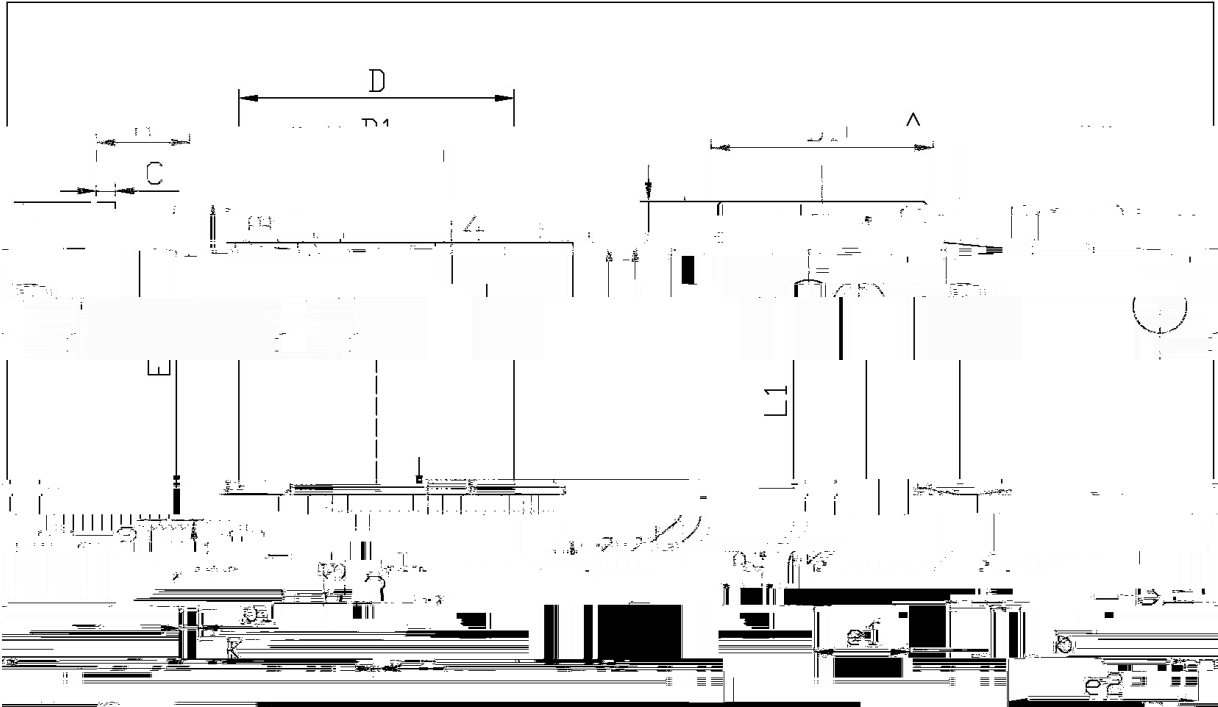


DATA SHEET

@ Parameter	Z Symbol	Rating	% y Unit
Peak Repetitive Reverse Voltage Working Peak Reverse Voltage DC Reverse Voltage	$V_{RRM}$ $V_{RWM}$ $V_{DC}$	40	V
RMS Reverse Voltage	$V_{RMS}$	31.5	V
Average forward rectified Current	$I_{F(AV)}$	1 h 10	A
Non Repetitive Peak Surge Current	$I_{FSM}$	100	A
Thermal Resistance Junction to Case	$R_{Jc}$	2	/W
Junction and Storage Temperature Range	$T_j T_{stg}$	-55~+150	



∅ □ = ) ∅ / Package Dimensions

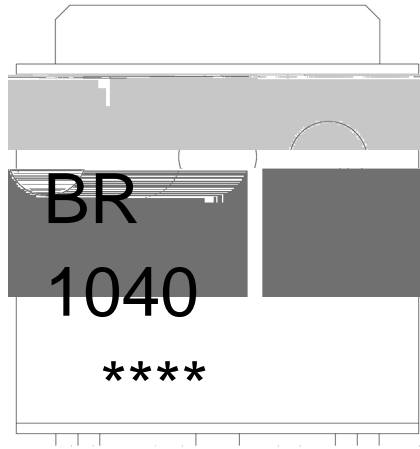


单位: mm

Symbol	Min	Max	Symbol	Min
A	2.30	2.40	F	5.95
B	0.50	0.52	G	4.75
C	0.45	0.55	H	9.95
D	5.16	5.50	I	0.00
D1	5.16	5.50	J	0.00
E	5.16	5.50	K	0.00
F	5.95	6.25	L	0.00
G	4.75	5.05	M	0.00
H	9.95	10.25	N	0.00
I	0.00	0.00	O	0.00
J	0.00	0.00	P	0.00
K	0.00	0.00	Q	0.00
L	0.00	0.00	R	0.00
M	0.00	0.00	S	0.00
N	0.00	0.00	T	0.00
O	0.00	0.00	U	0.00
P	0.00	0.00	V	0.00
Q	0.00	0.00	W	0.00
R	0.00	0.00	X	0.00
S	0.00	0.00	Y	0.00
T	0.00	0.00	Z	0.00

10-252

**, M y f / Marking Instructions**



" ¢ y  
BR y , [ W A  
1040 y " Z W A  
y ÿD Z W A k ÿD Z J

Note:  
BR: Company Code  
1040: Product Type Code  
\*\*\*\*: Lot No. Code, code change with Lot No

**MBRD1040**  
Rev.H Oct.-2024