

**/ Descriptions**

SOT-23          NPN          Silicon NPN transistor in a SOT-23 Plastic Package.

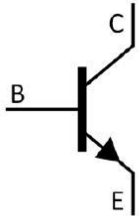
**/ Features**

Complementary pair with MMBTA92  
High voltage, Low saturation voltage, low collector capacitance output, complementary pair with MMBTA92.

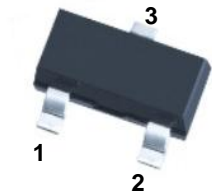
**/ Applications**

High voltage control circuit.

**/ Equivalent Circuit**



**/ Pinning**



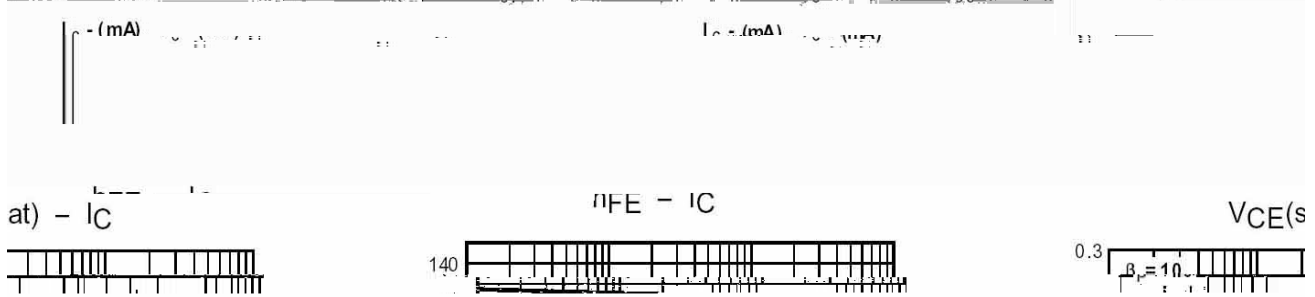
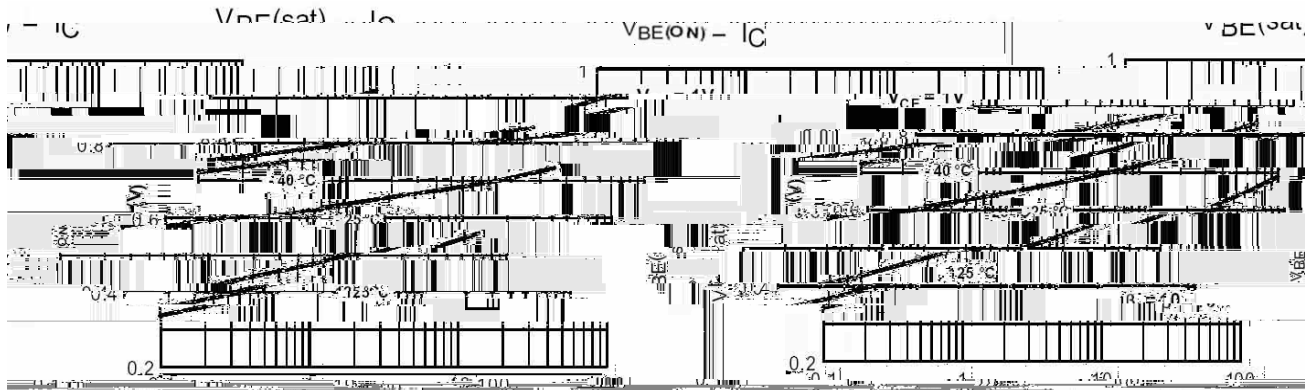
PIN1 Base          PIN 2 Emitter          PIN 3 Collector

**/ Marking**

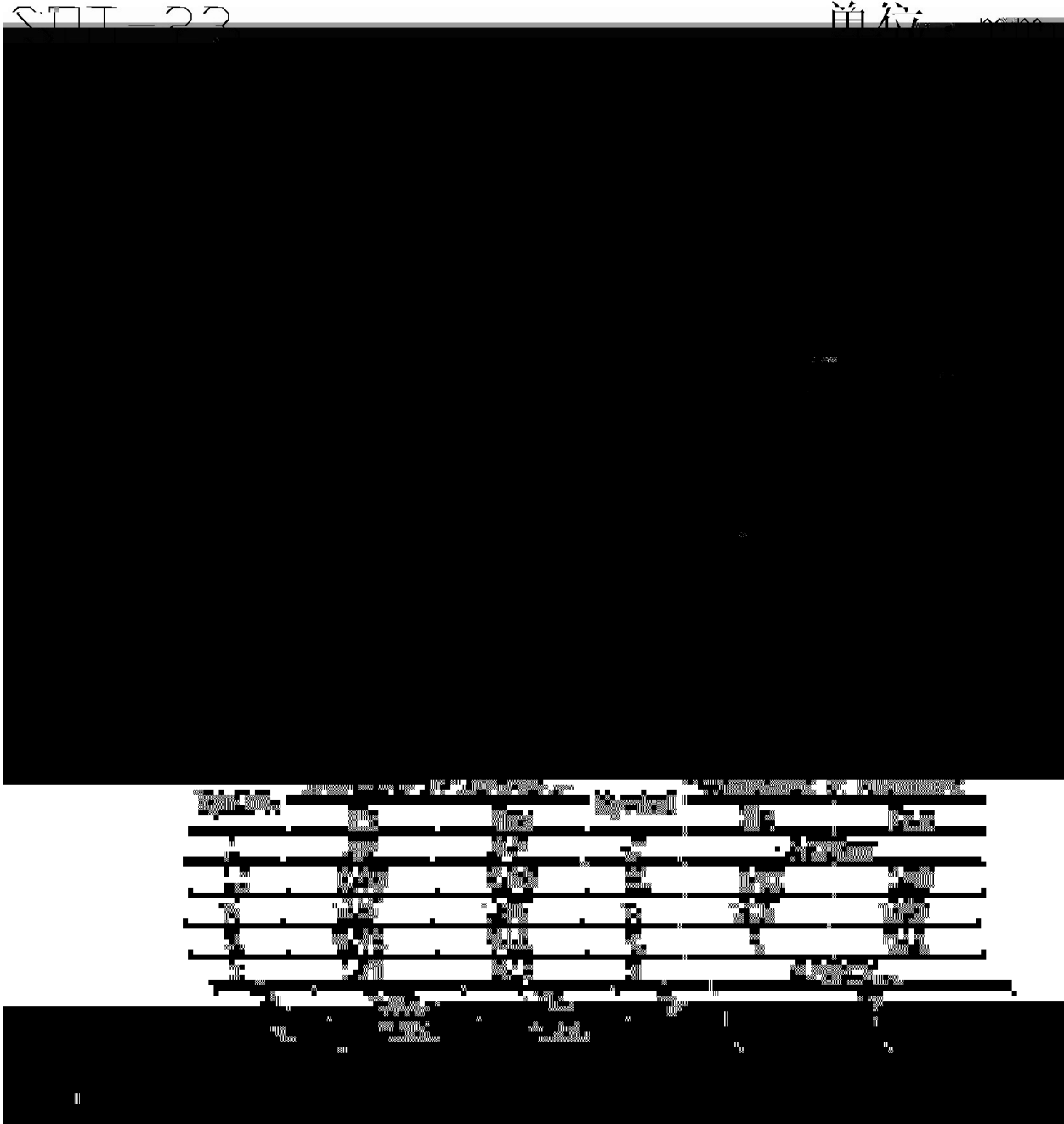
$h_{FE}$ Range	>40
Marking	H1D

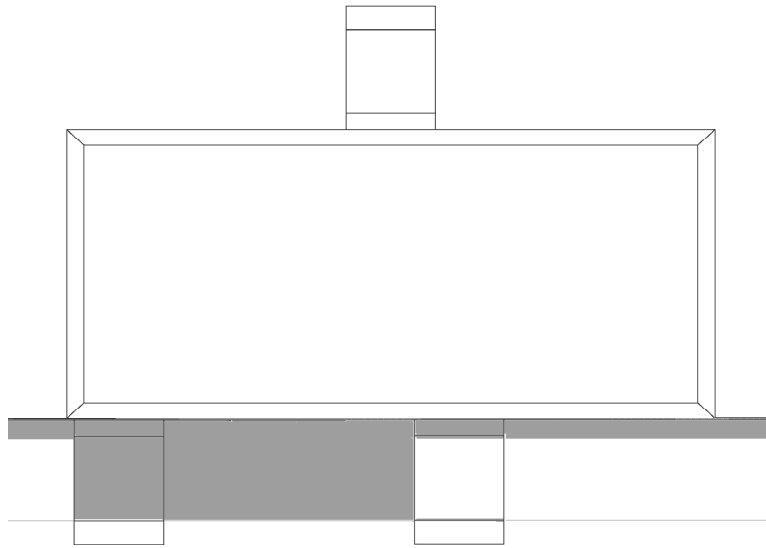
Parameter	Symbol	Rating	Unit
Collector to Base Voltage	$V_{CBO}$	300	V
Collector to Emitter Voltage	$V_{CEO}$	300	V

/ Electrical Characteristic Curve

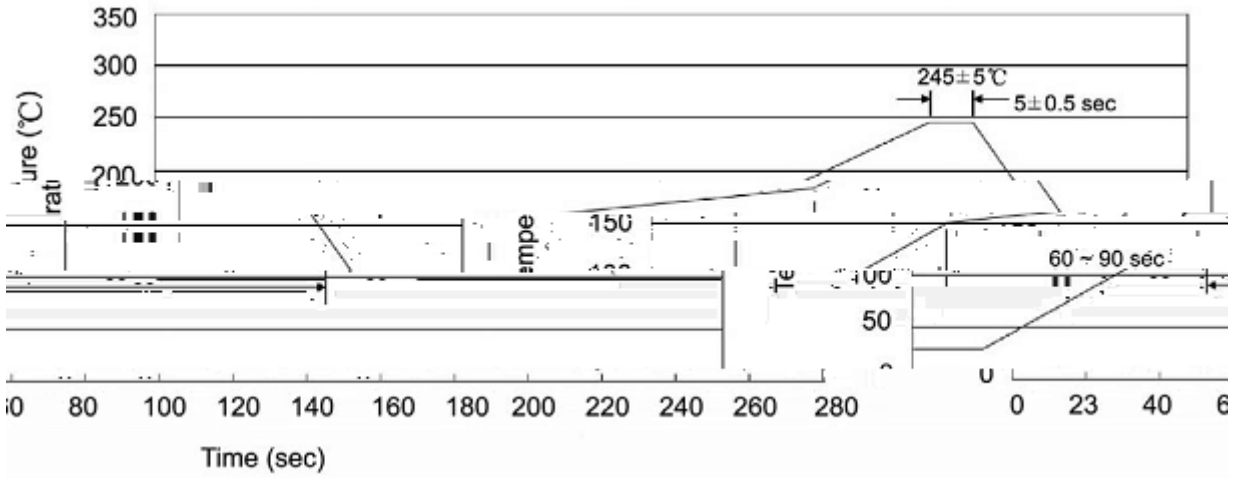


/ Package Dimensions





( ) / K\d g\iXk i\`Gif]`Δ ]fi @ `I \]fn Jfd \i`e^ZGY\$=i\ž



**Note:**

- |   |       |     |       |        |   |
|---|-------|-----|-------|--------|---|
| 1 | 25    | 150 | 60    | 90sec; | 1.Preheating:25~150 , Time:60~90sec.    |
| 2 | 245±5 |     | 5±0.5 | sec;   | 2.Peak Temp.:245±5 , Duration:5±0.5sec. |
| 3 |       | 2   | 10    | /sec.  | 3. Cooling Speed: 2~10 /sec.            |

**/ Resistance to Soldering Heat Test Conditions**

260±5                      10±1 sec.                      Temp.:260±5                      Time:10±1 sec

**/ Packaging SPEC.**

**/ REEL**

Package Type	Units					Dimension (unit mm <sup>3</sup> )		
	Units/Reel	Reels/Inner Box	Units/Inner Box	Inner Boxes/Outer Box	Units/Outer Box	Reel	Inner Box	Outer Box
SOT-23	3,000	10	30,000	6	180,000	7 ×8	180×120×180	390×385×205

**/ Notices**