

Rev.B Jun.-2022

50V ~ 1000V

2.0A

DO-15

Surface Mount General Purpose Silicon Rectifiers, Reverse Voltage: 50 to 1000V, Forward Current: 2.0A, DO-15 axial package.

Plated axial lead, Low forward voltage drop, Low leakage current, High forward surge capability.

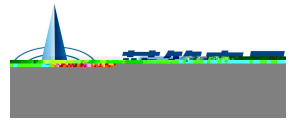
General purpose.



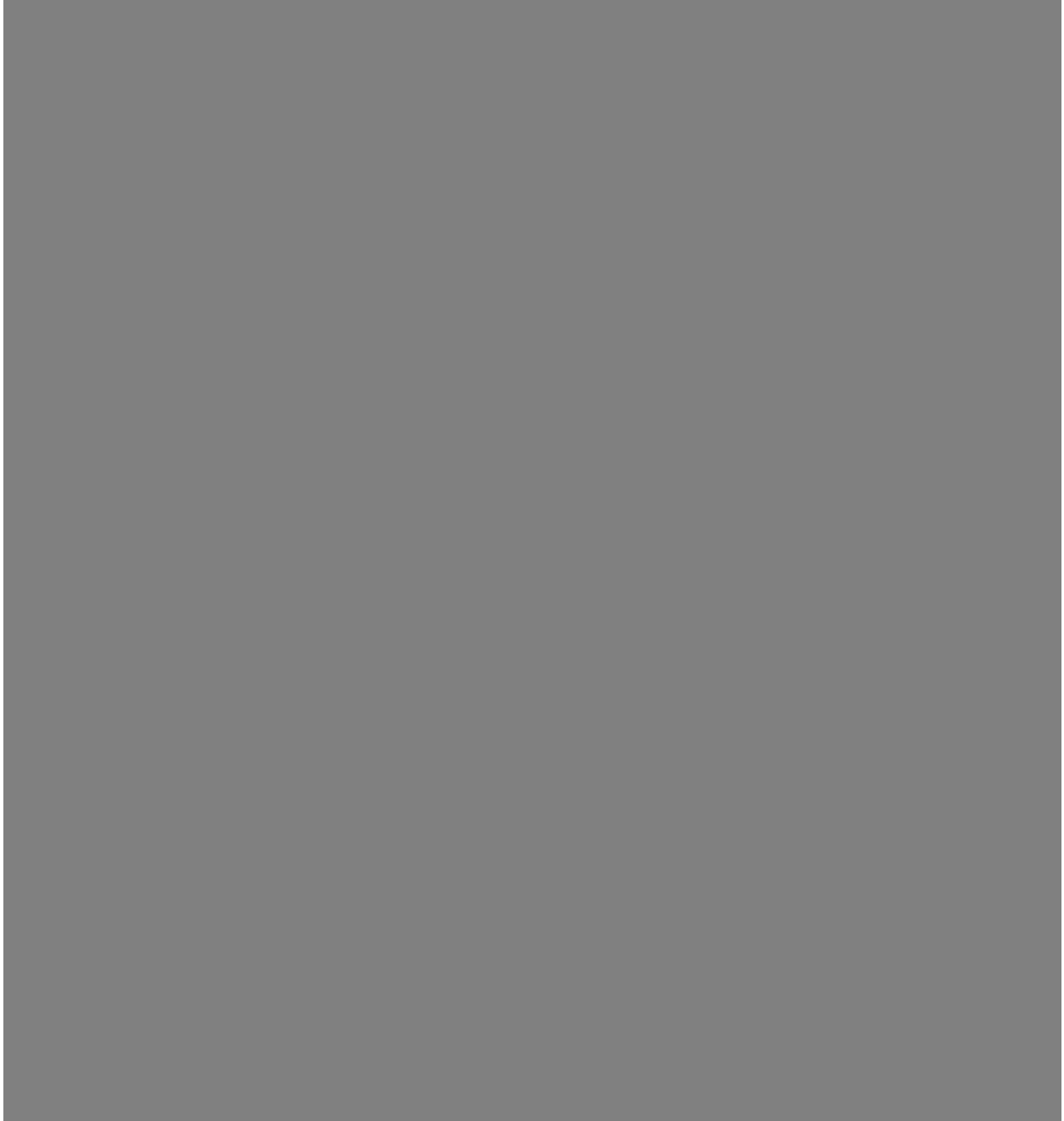
PIN1: Cathode PIN2: Anode

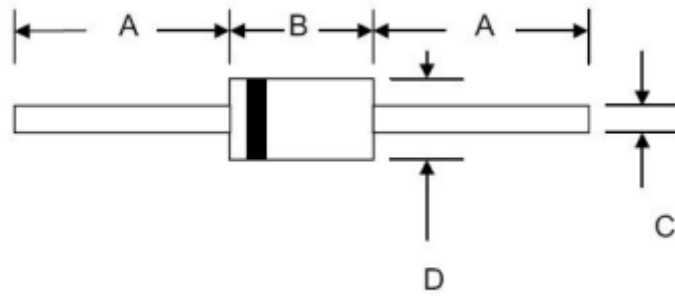
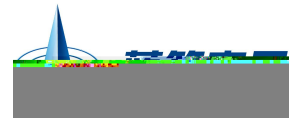
See Marking Instructions.



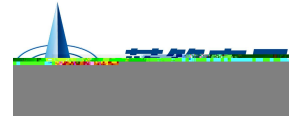


Rev.B Jun.-2022





	Min.	Max.	Min.	Max.
A	25.4		1.0	
B	5.8	7.6	0.230	0.300
C	0.68	0.78	0.027	0.031
D	2.6	3.6	0.104	0.140



1



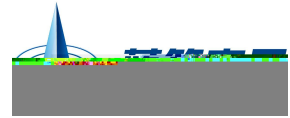
RL20X

Note:

RL20X          Product Type Code

## Marking

Type number	Marking code
RL201G	RL201
RL202G	RL202
RL203G	RL203
RL204G	RL204
RL205G	RL205
RL206G	RL206
RL207G	RL207



Temperature Profile for IR Reflow Soldering(Pb-Free)


- |   |         |           |       |  |
|---|---------|-----------|-------|--|
| 1 | 150 180 | 60 90sec; | Note: | 1.Preheating:150~180°C, Time:60~90sec.   |
| 2 | 245±5   | 5±0.5sec; |       | 2.Peak Temp.:245±5°C, Duration:5±0.5sec. |
| 3 | 2       | 10°C/sec. |       | 3. Cooling Speed: 2~10°C/sec.            |

260±5°C                      10±1 sec.                      Temp.:260±5°C                      Time:10±1 sec

/ REEL

Package Type	Units/Reel	Units	Dimension (unit: mm <sup>3</sup> )
--------------	------------	-------	------------------------------------