

**/ Descriptions**

50V ~ 1000V      2.0A      SMBF  
Surface Mount Superfast Recovery Rectifier, Reverse Voltage 50 to 1000V, Forward Current: 2.0A, SMBF thin package.

**/ Features**

RoHS      2011/65/EU  
Glass Passivated Chip Junction, Fast reverse recovery time, Lead free in comply with EU ROHS 2011/65/EU directives, For surface mounted applications. Halogen free product.

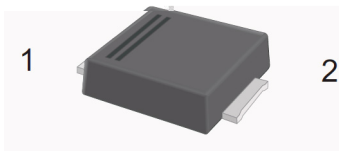
**/ Applications**

General purpose.

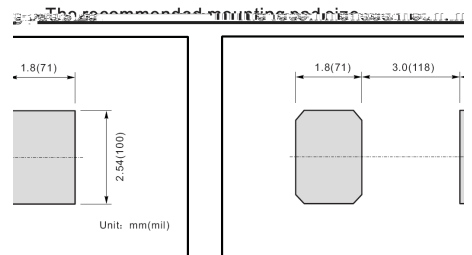
**/ Equivalent Circuit**



**/ Pinning**



| PIN | DESCRIPTION |
|-----|-------------|
| 1   | Cathode     |
| 2   | Anode       |



**/ Marking**

See Marking Instructions.

# RS2ABF~RS2MBF

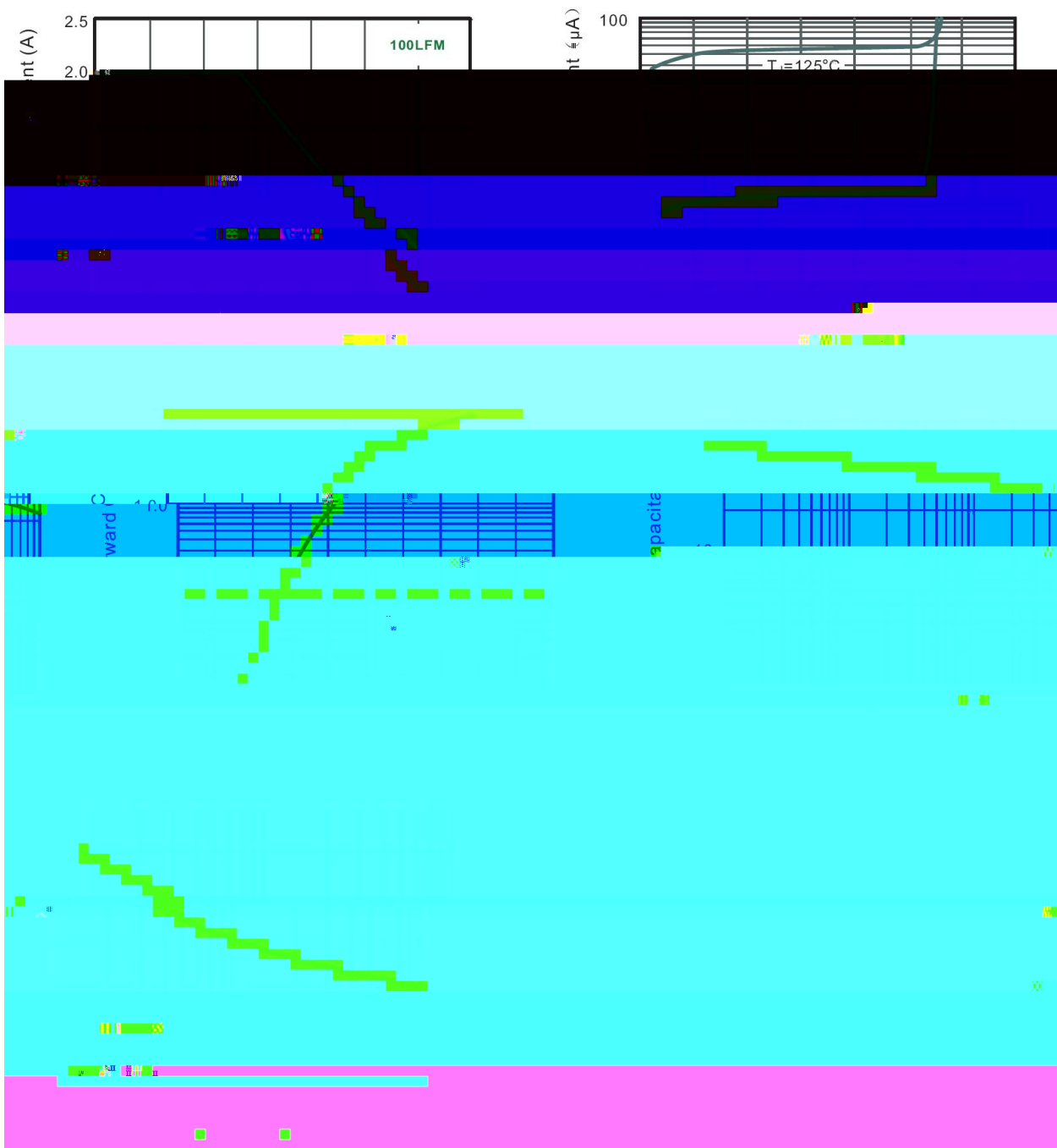
Rev.E May.-2019



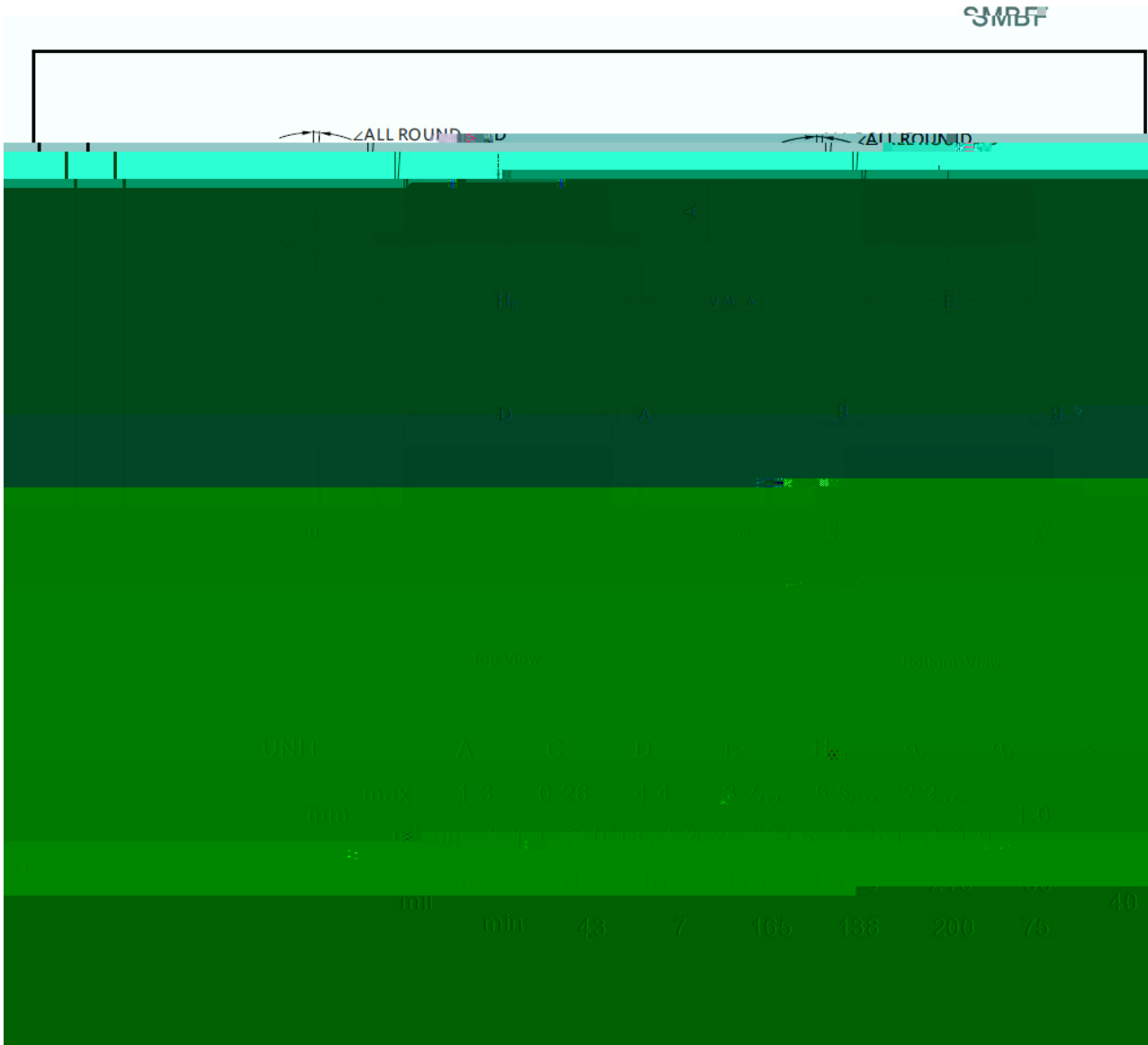
DATA SHEET

| Parameter   | Symbol     | Rating |        |        |        |        |        |        | Unit |
|---|------------|--------|--------|--------|--------|--------|--------|--------|------|
|   |            | RS2ABF | RS2BBF | RS2DBF | RS2GBF | RS2JBF | RS2KBF | RS2MBF |      |
| Maximum Repetitive Peak Reverse Voltage   | $V_{RRM}$  | 50     | 100    | 200    | 400    | 600    | 800    | 1000   | V    |
| Maximum RMS voltage   | $V_{RMS}$  | 35     | 70     | 140    | 280    | 420    | 560    | 700    | V    |
| Maximum DC Blocking Voltage   | $V_{DC}$   | 50     | 100    | 200    | 400    | 600    | 800    | 1000   | V    |
| Maximum Average Forward Rectified Current at $T_a=65$   | $I_{F AV}$ | 2.0    |        |        |        |        |        |        | A    |
| Peak Forward Surge Current 8.3 ms Single Half Sine Wave Superimposed on Rated Load (JEDEC Method) | $I_{FSM}$  | 50     |        |        |        |        |        |        | A    |
| Typical Junction Capacitance at $V_R=4V, f=1MHz$  | $C_j$      | 28     |        |        |        |        |        |        | pF   |
| Typical Thermal Resistance <sup>2</sup>   | $R_{ja}$   | 60     |        |        |        |        |        |        | /W   |
|   | $R_{JC}$   | 18     |        |        |        |        |        |        |      |

/ Electrical Characteristic Curve



/ Package Dimensions



/ Marking Instructions

# Marking

| Type number | Marking code |
|-------------|--------------|
| RS2ABF      | R2AB         |
| RS2BBF      | R2BB         |
| RS2DBF      | R2DB         |
| RS2GBF      | R2GB         |
| RS2JBF      | R2JB         |
| RS2MBF      | R2MB         |

/ Marking Instructions



R2AB

\*\*\*\*

1 \*

3 \*

Note:

R2AB          Product Type Code

\*\*\*\*          Lot No. Code    The 1st \* means:YM Code    The last 3 \* means:little Lot No  
Code

# RS2ABF~RS2MBF

Rev.E May.-2019



蓝箭电子  
BLUE ROCKET ELECTRONICS

DATA SHEET

( ) / K\d g\rXkl r\ Prf ]iΔ ]f r ll I \]df wJf q \rie^žPY-Fr\ž

