

/ Descriptions

50V~1000V 2.0A SMB

Surface Mount General Purpose Silicon Rectifiers,Reverse Voltage:50 to1000V,Forward Current:2.0A, SMB package.

/ Features

RoHS 2011/65/EU

Glass Passivated Chip Junction,Fast reverse recovery time,Lead free in comply with EU ROHS 2011/65/EU directives,For surface mounted applications.Halogen free product.

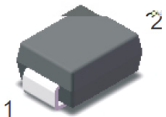
/ Applications

General purpose.

/ Equivalent Circuit

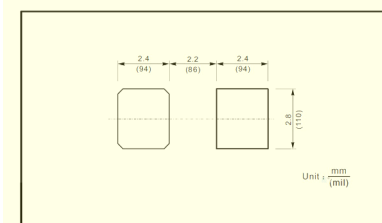


/ Pinning



PIN	DESCRIPTION
1	Cathode
2	Anode

The recommended mounting size



/ Marking

See Marking Instructions.

S2AB~S2MB
Rev.A May.-2018

Parameter

/ Electrical Characteristic Curve

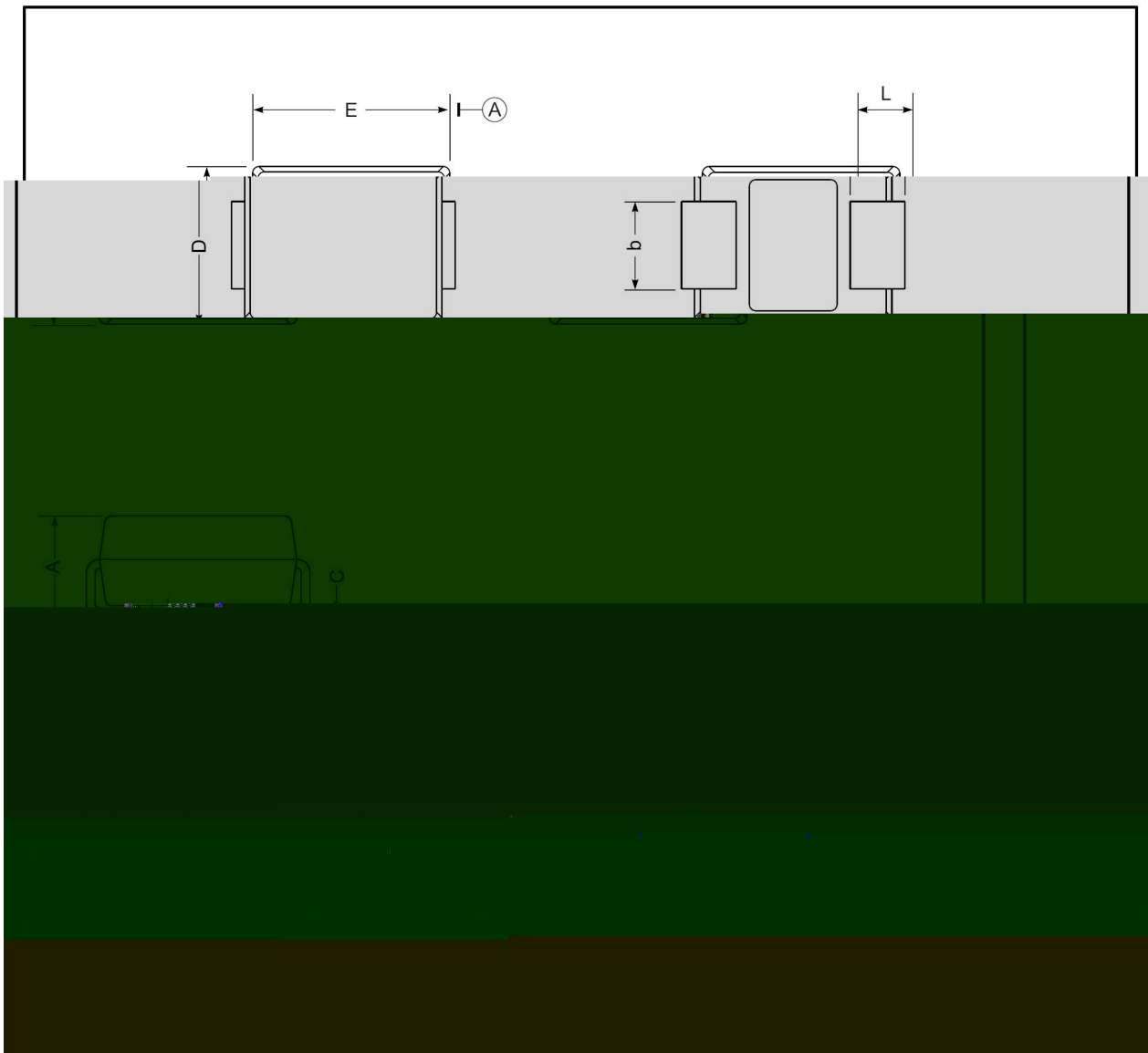
Fig.1 Forward Current Derating Curve

Fig.2 Typical Instantaneous Reverse Characteristics



/ Package Dimensions

SMB

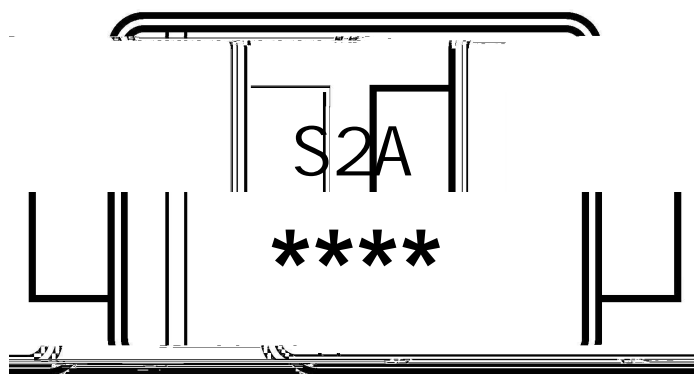


/ Marking Instructions

Marking

Type number	Marking code
S2AB	S2A
S2BB	S2B
S2DB	S2D
S2EB	S2E
S2FB	S2F
S2GB	S2G
S2HB	S2H
S2IB	S2I
S2JB	S2J
S2KB	S2K
S2LB	S2L
S2MB	S2M

/ Marking Instructions



S2A

1 *

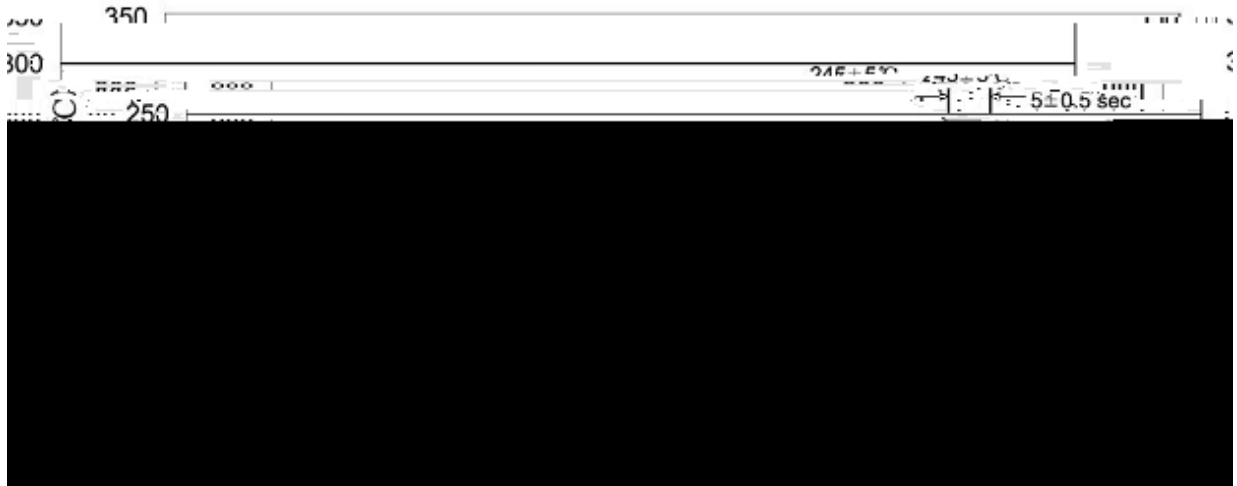
3 *

Note:

S2A Product Type Code

**** Lot No. Code The 1st * means:YM Code The last 3 * means:little Lot No
Code

() / K\ d g\ iXk i\ \Gif]`Δ`]fi`@`I\]fn`Jfd\`i`e^ZGY\$=i\z



1	150 180	60 90sec;	Note:	1.Preheating:150~180 , Time:60~90sec.
2	245±5	5±0.5sec;		2.Peak Temp.:245±5 , Duration:5±0.5sec.
3	2 10	/sec.		3. Cooling Speed: 2~10 /sec.

/ Resistance to Soldering Heat Test Conditions

260±5	10±1 sec.	Temp.:260±5	Time:10±1 sec
-------	-----------	-------------	---------------

/ Packaging SPEC.

/ REEL

Package Type 封装形式	Units 包装数量	Dimension 包装尺寸 (unit: mm ³)
----------------------	------------	---