

5 é / Descriptions

n μÉ xRK Ô Â 8 â ' k F g 9 y < k 3 g v y ' k V ° SMBF / xož
Surface Mount Schottky Barrier Rectifier, Reverse Voltage:40V,Forward Current:3.0A,SMBF thin package.

α^a / Features

z ô k ä | ä k ~ ... v Ý k 9 z 9 k ä È y â Å ' k 9 n μ É xož —)í D }ož
Low power loss, high efficiency, High forward surge current capability, For use in low voltage, high frequency inverters, and polarity protection applications,For surface mounted applications.Halogen free product.

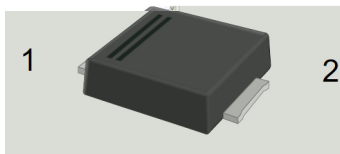
Đ ÷ / Applications

%²" (General purpose.

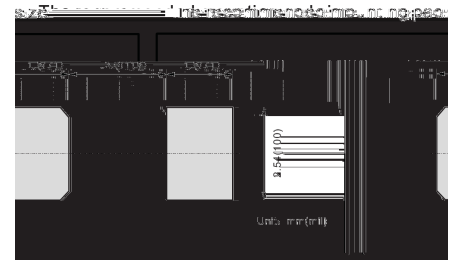
Ã W] Ô . / Equivalent Circuit



• Ũ - æ / Pinning



PIN	DESCRIPTION
1	Cathode
2	Anode



, M V / Marking

• - ~^a ϕož See Marking Instructions.

Absolute Maximum Ratings(Ta=25 ;)

@ f Parameter	@ f ... Z Symbol	f › Rating	% y Unit
Maximum Repetitive Peak Reverse Voltage	V _{RRM}	40	V
Maximum RMS voltage	V _{RMS}	28	V
Maximum DC Blocking Voltage	V _{DC}	40	V
Maximum Average Forward Rectified Current at T _c =100	I _{F(AV)}	3.0	A
Peak Forward Surge Current,8.3ms Single Half Sine-wave Superimposed on Rated Load	I _{FSM}	80	A
Typical Junction Capacitance ¹	C _j	350	pF
Typical Thermal Resistance ²	R _{JA}	47	/W
Operating Junction Temperature Range	T _j	-55~+150	
Storage Temperature Range	T _{stg}	-55~+150	

Note:

1 Measured at 1MHz and applied reverse voltage of 4 V D.C.

2 P.C.B. mounted with 2.0 X 2.0" (5 X 5 cm) copper pad areas.

Electrical Characteristics(Ta=25 ;)

@ f Parameter	@ f ... Z Symbol	y Ú ^ Test condition	f › Rating	% y Unit
Max Instantaneous Forward Voltage	V _F	I _F =3.0A	0.45	V
Maximum DC Reverse Current at Rated DC Reverse Voltage	I _R	T _a =25	0.3	mA
		T _a =100	5	

SSL34BF / Electrical Characteristic Curve

Ø □ =) ϕ / Package Dimensions

, My f / Marking Instructions

9 2 (

^a ç y

SL34B y ° Z W A

**** y ÿ D Z A Ç A k † 1 * v ã W A k e µ 3 * ç ã 4 Z W A

Note:

SL34B y Product Type Code

**** y Lot No. Code k The 1st * means:YM Code k The last 3 * means:little Lot No Code

š WD t... • Ž ϕ (x /) / : KSVKXGZ[XK 6XULORK LUX /8 8KLRU] 9URJKXOTM 6

^a ϕ y

- 1o• Ä ½ “ † 150 ½180 - k ž • 60 ½90sec;
- 2o• Q › “ † 245 r5 - k ž • 4 Ò 5 r0.5sec;
- 3o•D N ò i Ò 0 , † 2 ½10 - /sec.

Note:

- 1.Preheating:150~180 - , Time:60~90sec.
- 2.Peak Temp.:245 r5 - , Duration:5 r0.5sec.
- 3.