

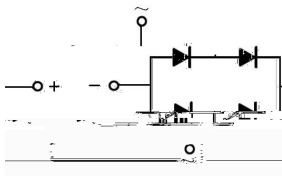
**/ Descriptions**

**/ Features**

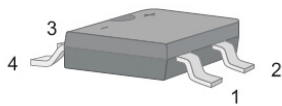
100V~1000V                      1.2A

**/ Applications**

**/ Equivalent Circuit**

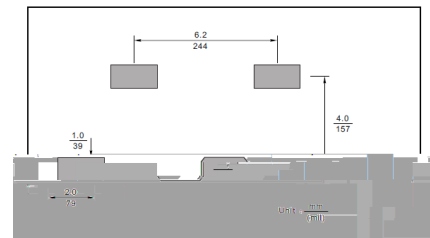


**/ Pinning**



PIN	DESCRIPTION
1	Input Pin ( ~ )
2	Input Pin ( ~ )
3	Output Anode ( + )
3	Output Anode

The recommended mounting pad size



**/ Marking**



/ Electrical Characteristic Curve

Fig.1 Average Rectified Output Current Derating Curve

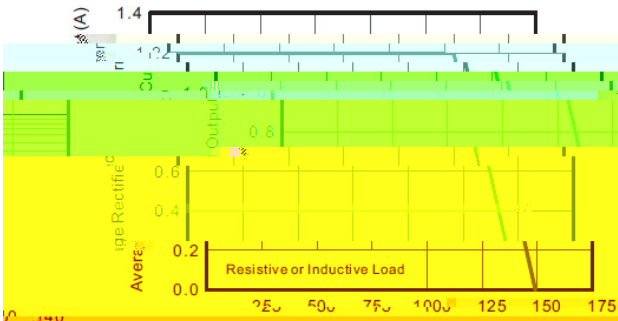


Fig.2 Typical Reverse Characteristics

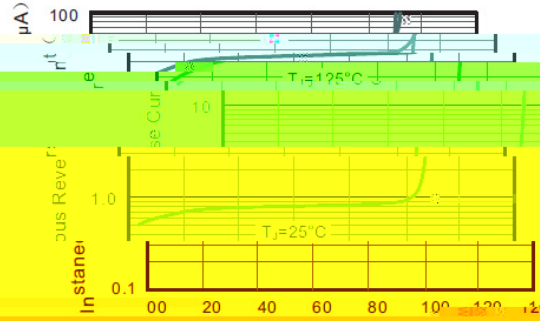


Fig.3 Typical Junction Capacitance

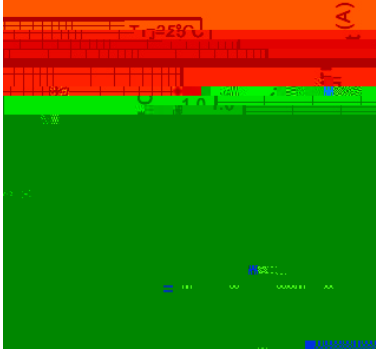


Fig.3 Typical Instantaneous Forward Characteristics

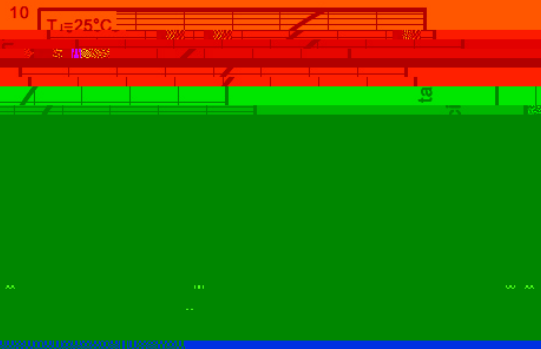
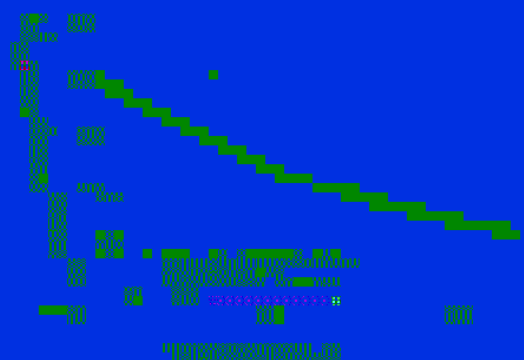
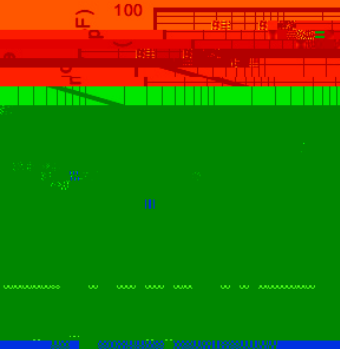
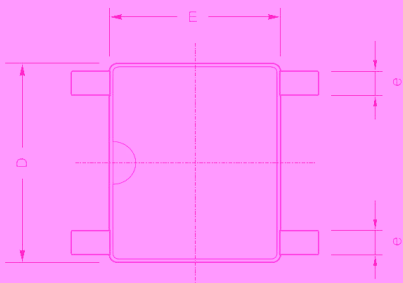
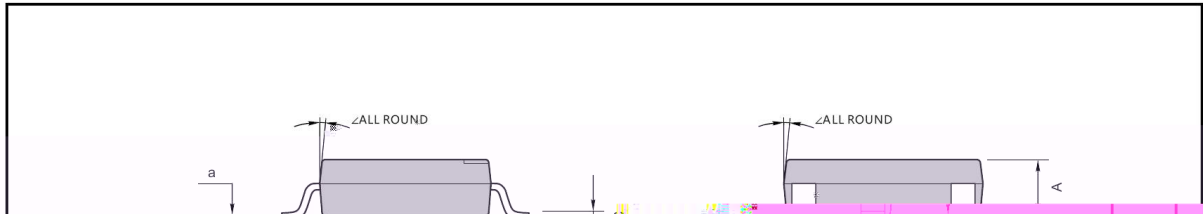


Fig.4 Typical Junction Temperature



/ Package Dimensions

ABS/LBF



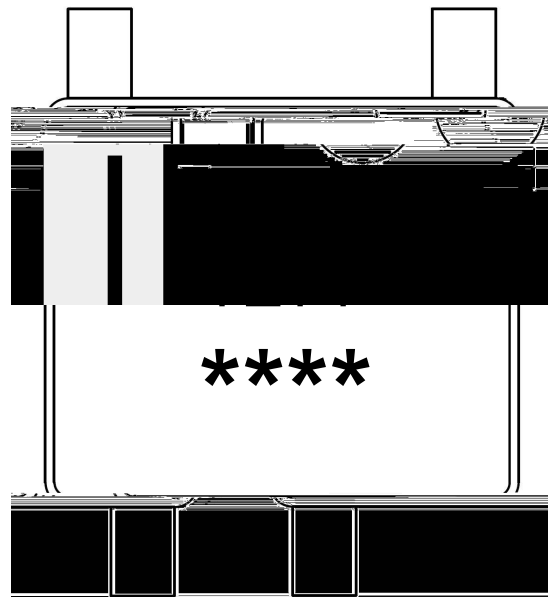
ABS/LBF mechanical data

UNIT		A	C	D	E	H <sub>E</sub>	d	e	L	L <sub>1</sub>	a	∠
mm	max	1.5	0.22	5.2	4.5	6.4	4.2	0.7	0.95	0.6	0.2	7°
	min	1.3	0.15	4.9	4.2	6.0	3.8	0.5				
mil	max	50.50	6.87	209.5	177	252	165	28	37	24	4	
	min	51.5	6.50	199	166	232	150	20	38	24	4	

/ Marking Instructions



/ Marking Instructions



**TB1S-12~TB10S-12**



**DATA SHEET**