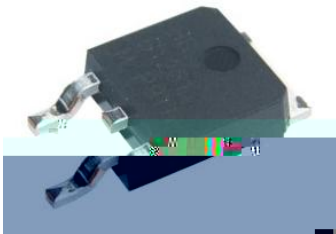
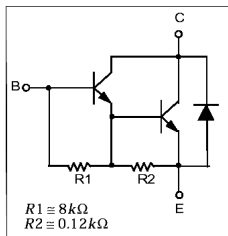


Rev.F May.-2016

TO-252 NPN Silicon NPN transistor in a TO-252 Plastic Package.

TIP127D
Complement to TIP127D.

Medium power linear switching applications.

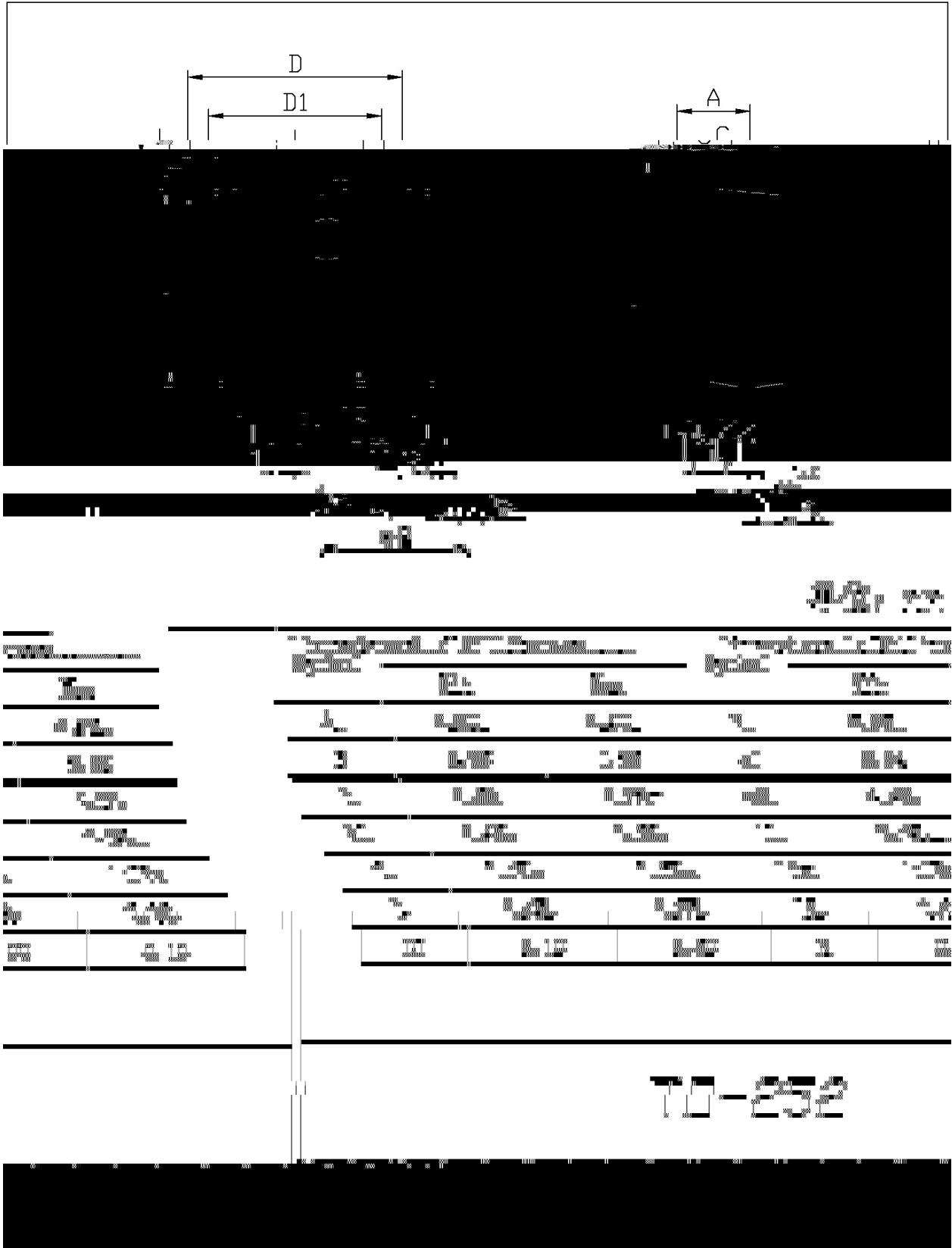


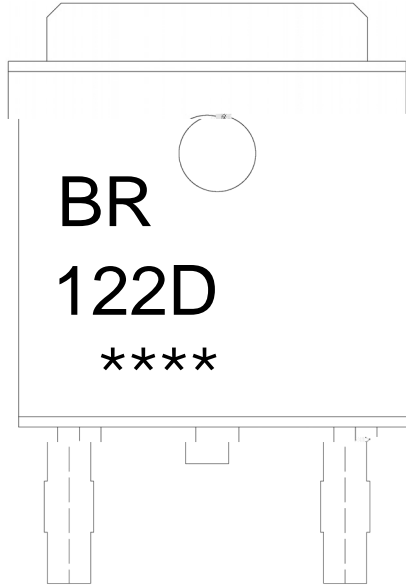
PIN1 Base PIN 2,4 Collector PIN 3 Emitter

See Marking Instructions.

Parameter	Symbol	Rating	Unit
Collector to Base Voltage	V_{CBO}	100	V
Collector to Emitter Voltage	V_{CEO}	100	V
Emitter to Base Voltage	V_{EBO}	5.0	V
Collector Current - Continuous	I_C	5.0	A
Collector Power Dissipation	$P_C(T_C=25^\circ\text{C})$	40	W
Junction Temperature	T_j	150	
Storage Temperature Range	T_{stg}	-55 150	

Parameter	Symbol	Test Conditions	Min	Typ	Max	Unit
Collector to Emitter Breakdown Voltage	V_{CEO}	$I_C=100\text{mA}$ $I_B=0$	100			V
Collector Cut-Off Current	I_{CEO}	$V_{CE}=50\text{V}$ $I_B=0$			0.5	mA
Collector Cut-Off Current	I_{CBO}	$V_{CB}=100\text{V}$ $I_E=0$			0.2	mA
Emitter Cut-Off Current	I_{EBO}	$V_{EB}=5.0\text{V}$ $I_C=0$			2.0	mA
DC Current Gain	$h_{FE(1)}$	$V_{CE}=3.0\text{V}$ $I_C=0.5\text{A}$	1000			
	$h_{FE(2)}$	$V_{CE}=3.0\text{V}$ $I_C=3.0\text{A}$	1000			
Collector to Emitter Saturation Voltage	$V_{CE(sat)(1)}$	$I_C=3.0\text{A}$ $I_B=12\text{mA}$			2.0	V
	$V_{CE(sat)(2)}$	$I_C=5.0\text{A}$ $I_B=20\text{mA}$			4.0	V
Base to Emitter Voltage	V_{BE}	$I_C=3.0\text{A}$ $V_{CE}=3.0\text{V}$			2.5	V
Collector output capacitance	C_{ob}	$V_{CB}=10\text{V}$ $I_E=0$ $f=0.1\text{MHz}$			200	pF





BR

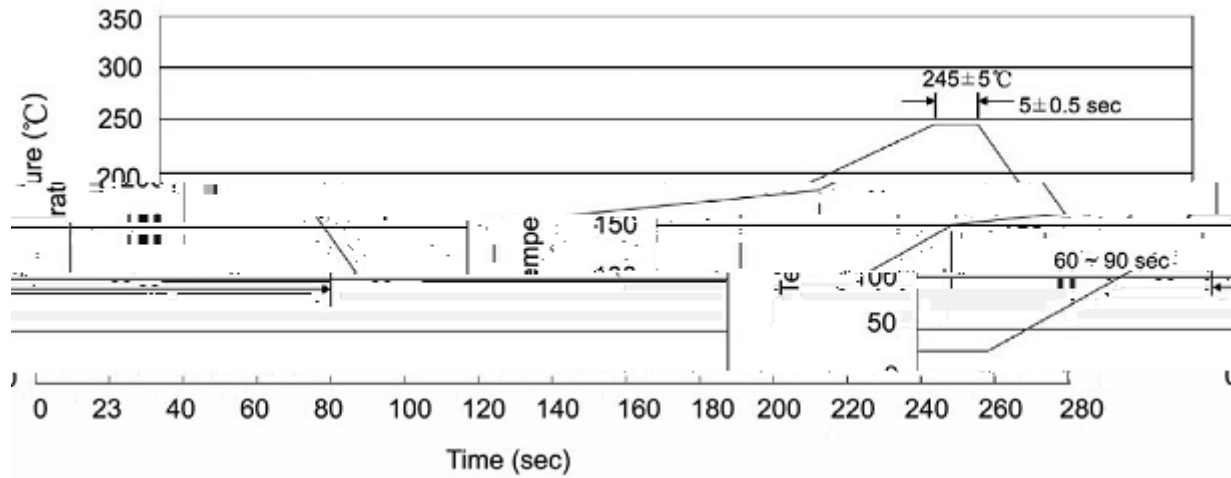
122D

Note:

BR: Company Code

122D: Product Type.

****: Lot No. Code, code change with Lot No.

Temperature Profile for IR Reflow Soldering(Pb-Free)


Note:

- | | | | | | |
|---|-------|-----|-----------|----------|---|
| 1 | 25 | 150 | 60 | 90sec; | 1.Preheating:25~150 , Time:60~90sec. |
| 2 | 245±5 | | 5±0.5sec; | | 2.Peak Temp.:245±5 , Duration:5±0.5sec. |
| 3 | | | 2 | 10 /sec. | 3. Cooling Speed: 2~10 /sec. |

260±5

10±1 sec.

Temp.:260±5

Time:10±1 sec

/ REEL

Package Type 封装形式	Units 包装数量					Dimension 包装尺寸 (unit: mm ³)		
	Units/Reel 只/卷盘	Reels/Inner Box 卷盘/盒	Units/Inner Box 只/盒	Inner Boxes/Outer Box 盒/箱	Units/Outer Box 只/箱	Reel	Inner Box 盒	Outer Box 箱
TO-252	2,500	2	5,000	5	25,000	13 ×16	360×360×50	385×257×392

/ TUBE

Package Type 封装形式	Units 包装数量					Dimension 包装尺寸 (unit: mm ³)		
	Units/Tube 只/套管	Tubes/Inner Box 套管/盒	Units/Inner Box 只/盒	Inner Boxes/Outer Box 盒/箱	Units/Outer Box 只/箱	Tube 套管	Inner Box 盒	Outer Box 箱
TO-251/252	75	48	3,600	5	18,000	526×20.5×5.25	555×164×50	575×290×180