

/ Descriptions

μA (100mA) 8-Pin TO-18

/ Features

1.5mA (typical) at 100mA

0

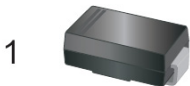
/ Applications

%

/ Equivalent Circuit

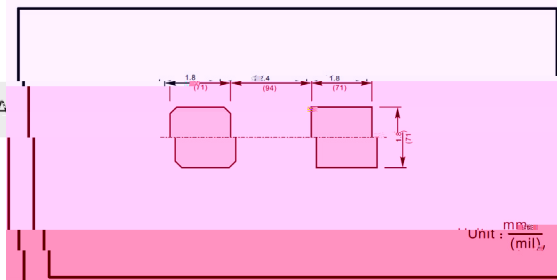


/ Pinning



PIN	DESCRIPTION
1	Cathode
2	Anode

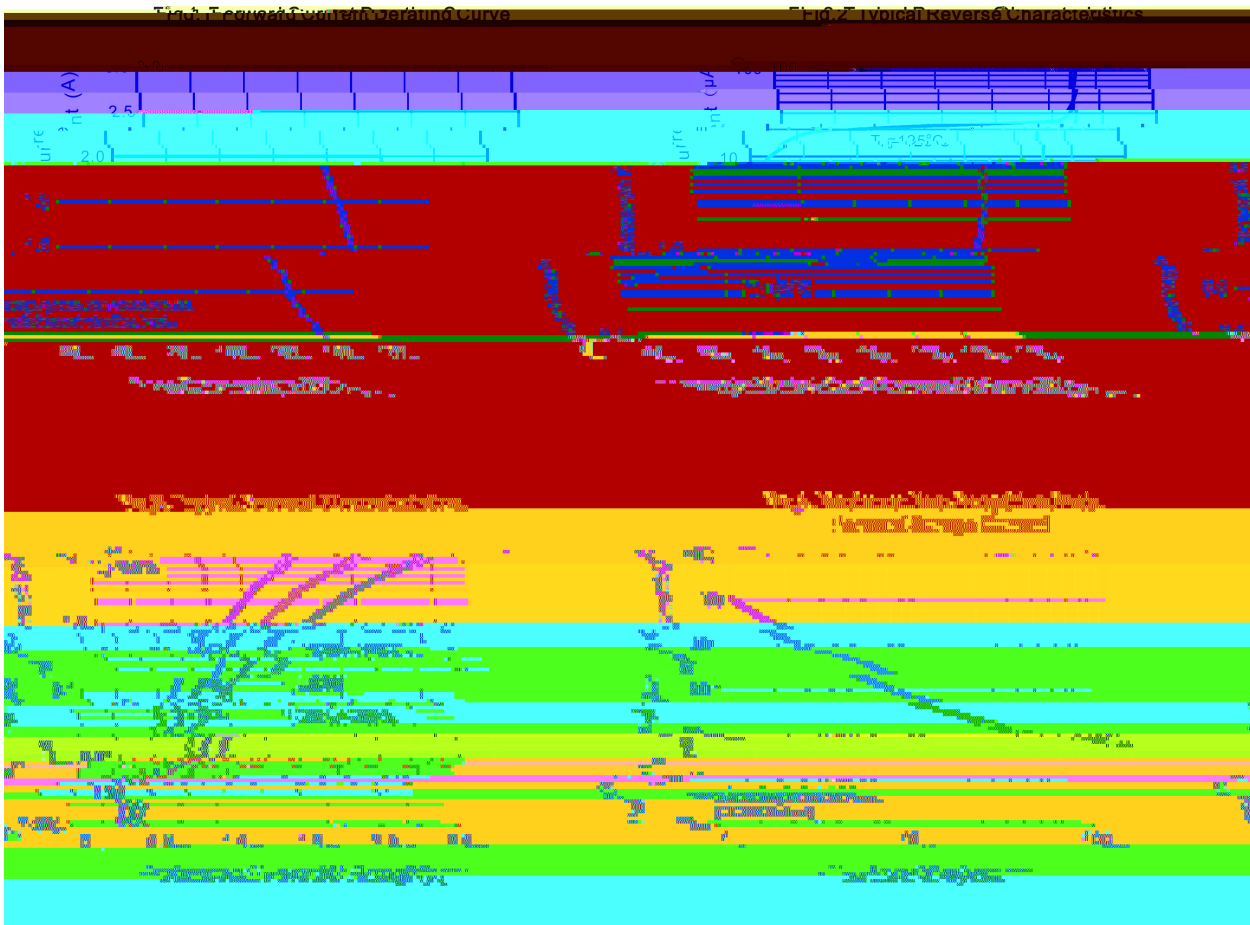
The recommended mounting pad size

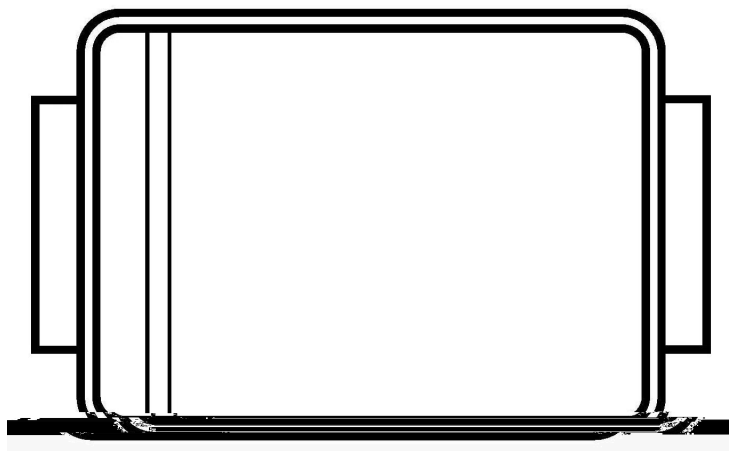


Unit: mm (mil)

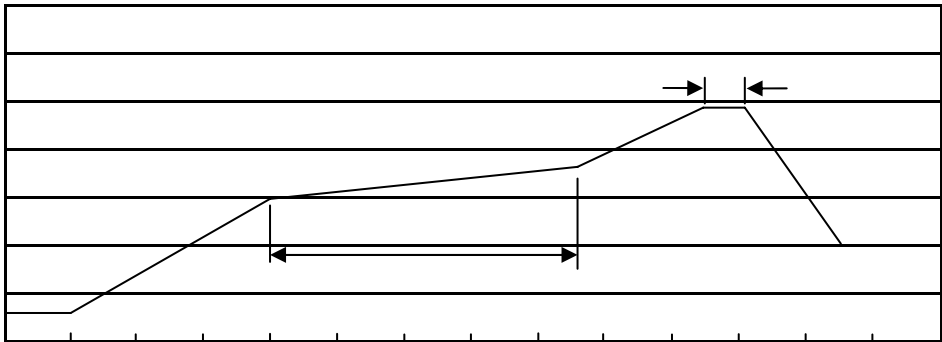
/ Marking

/ Electrical Characteristic Curve





() / Temperature Profile for IR Reflow Soldering(Pb-Free)



... ..

/ Resistance to Soldering Heat Test Conditions

... ..

/ Packaging SPEC.

/ Notices